

Mazda B3000 V6 Adaptor Kit – CEV5080

CEV5191



Overview

All adapters retain use of original clutch and fit most NetGain Hyper9, WARP 9 and HPEV AC34/AC35/AC50/AC51 Motors. Some adapter plates may have more or less bolt holes than your make and model of vehicle requires. As some adapters span a broad range of model years the adapter is designed to have enough bolt holes to be compatible with all model designs.

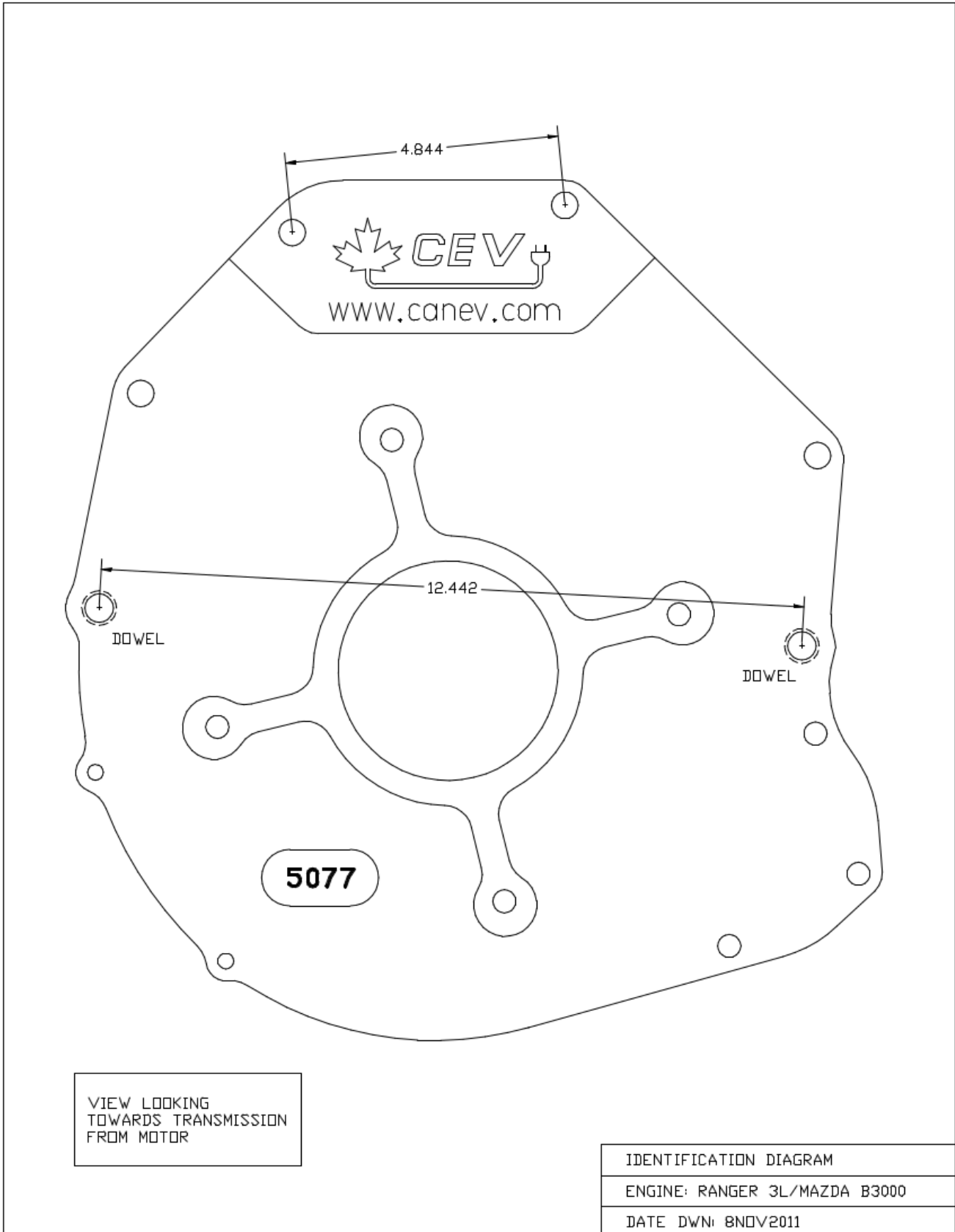
Specifications

- All adapter kits come with required hardware
- If using a HyPer9 motor, you may also need a shaft collar spacer, which is included

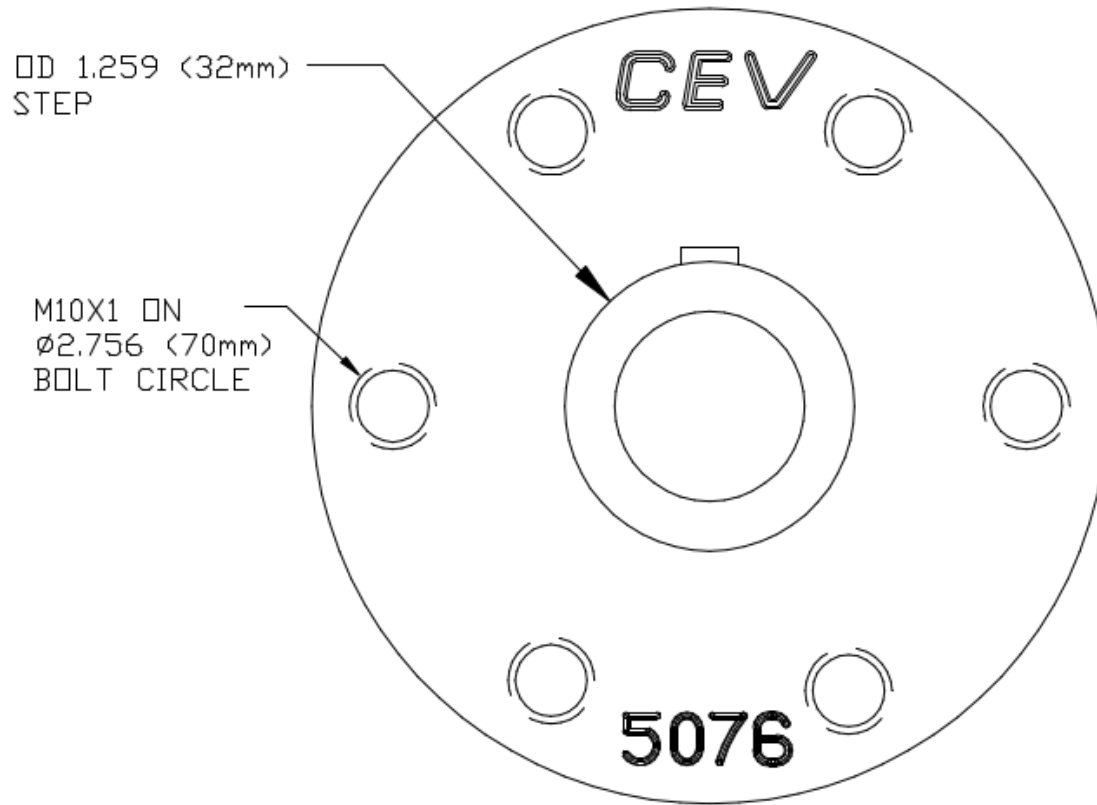
Compatible Vehicles – Mazda B3000 V6 Adaptor Kit CEV5080

- 2001-2011 Mazda B-Series
- 2000-2007 Ford Mondeo
- 2010-2012 Ford Transit Connect
- 2005-2008 Ford Escape/Mazda Tribute/Mercury Mariner
- 2002-2005 Mazda MPV
- 2001-2011 Ford Ranger
- 2009- Ford Escape
- 2014- Ford Transit Connect

Dimensions – Mazda B3000 V6 Adaptor Kit – CEV5080



Dimensions – Mazda B3000 V6 Adaptor Kit – CEV5080 (cont.)



VIEW LOOKING
TOWARDS MOTOR

HUB IDENTIFICATION DIAGRAM
ENGINE: RANGER 3L/MAZDA B3000
DATE DWN: 29JUL2012