

## Mazda B2300 2.3/2.5L Adaptor Kit – CEV5105

CEV5191



### Overview

All adapters retain use of original clutch and fit most NetGain Hyper9, WARP 9 and HPEV AC34/AC35/AC50/AC51 Motors. Some adapter plates may have more or less bolt holes than your make and model of vehicle requires. As some adapters span a broad range of model years the adapter is designed to have enough bolt holes to be compatible with all model designs.

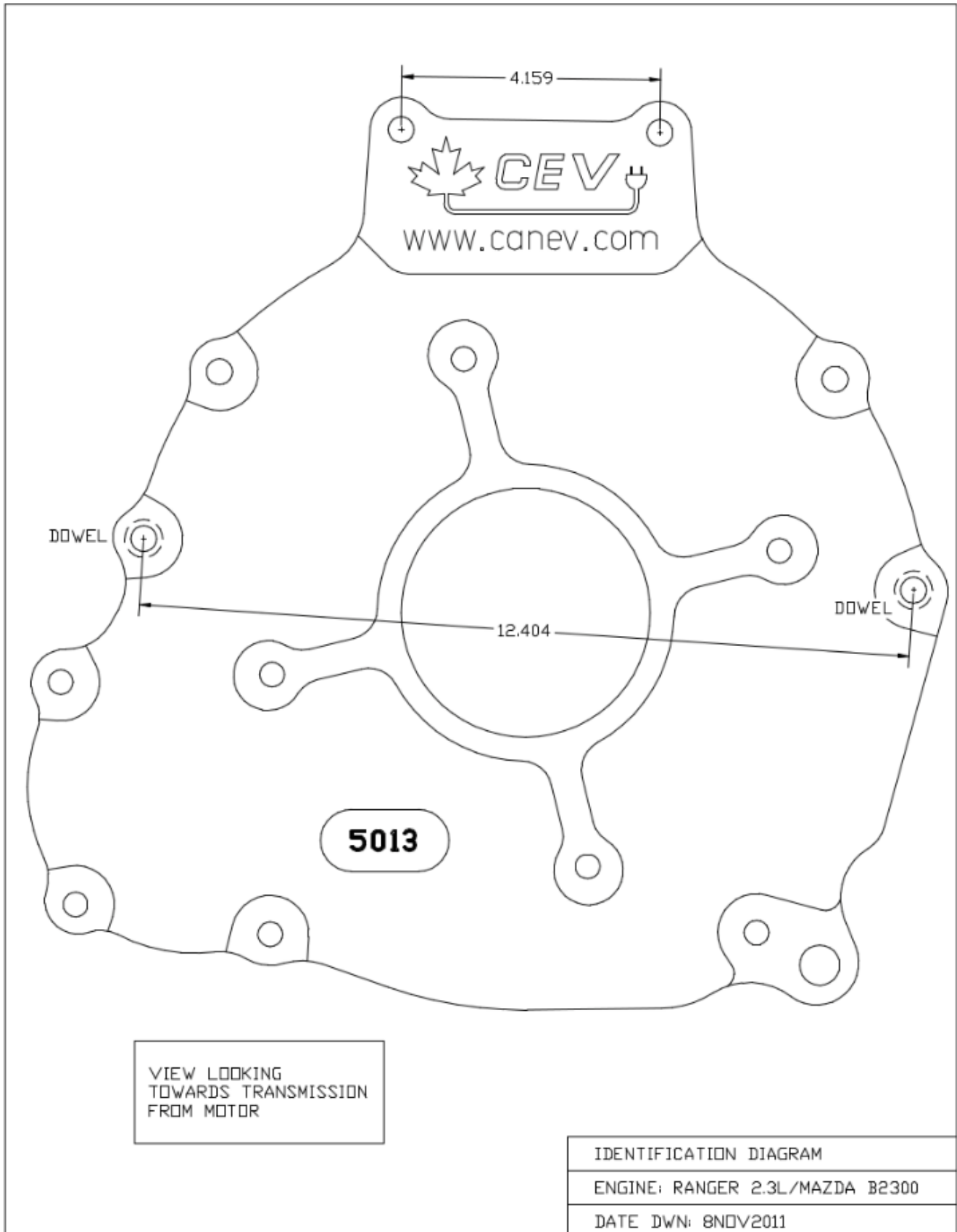
### Specifications

- All adapter kits come with required hardware
- If using a HyPer9 motor, you may also need a shaft collar spacer, which is included

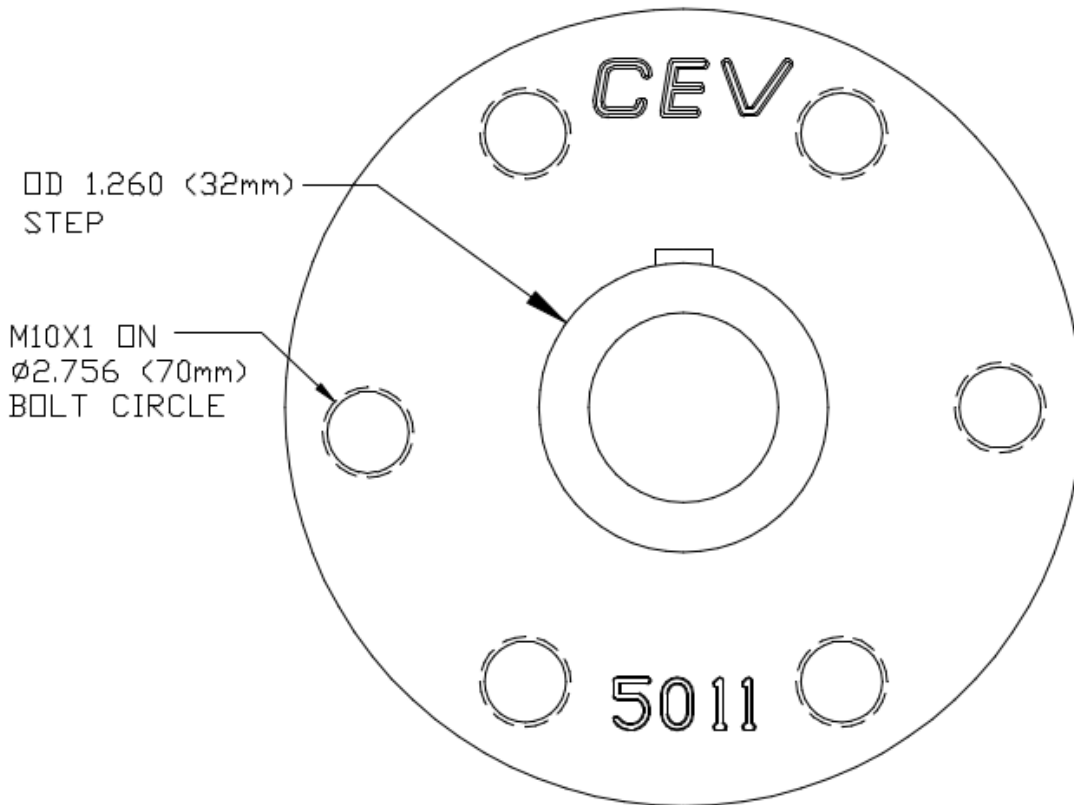
## Compatible Vehicles – Mazda 2.3/2.5L Adaptor Kit CEV5105

- Ford Ranger 2.3L
- Ford Aerostar
- Ford Courier
- Ford Pinto
- Ford Ranger/Mazda B Series
- Ford Mustang
- 1975-1979 Ford Maverick Brazilian models
- Ford Jeep CJ-5 Brazilian models
- Ford Rural, F-75 pick up Brazilian models
- Ford Taurus Argentina models
- Ford Sierra Argentina models
- Ford Falcon Argentina models
- Ford Fairmont
- Mazda B2300
- Mercury Bobcat
- Mercury Capri
- Ford Mustang II
- Mercury Zephyr
- 1983-1986 Ford LTD

# Dimensions – Mazda B2300 2.3/2.5L Adaptor Kit – CEV5105



# Dimensions – Mazda B2300 2.3/2.5L Adaptor Kit – CEV5105 (cont.)



VIEW LOOKING  
TOWARDS MOTOR

HUB IDENTIFICATION DIAGRAM
ENGINE: RANGER 2.3L/MAZDA B2300
DATE DWN: 29JUL2012