

Land Rover 2.25L Adaptor Kit – CEV5117

CEV5117



Overview

All adapters retain use of original clutch and fit most NetGain Hyper9, WARP 9 and HPEV AC34/AC35/AC50/AC51 Motors. Some adapter plates may have more or less bolt holes than your make and model of vehicle requires. As some adapters span a broad range of model years the adapter is designed to have enough bolt holes to be compatible with all model designs.

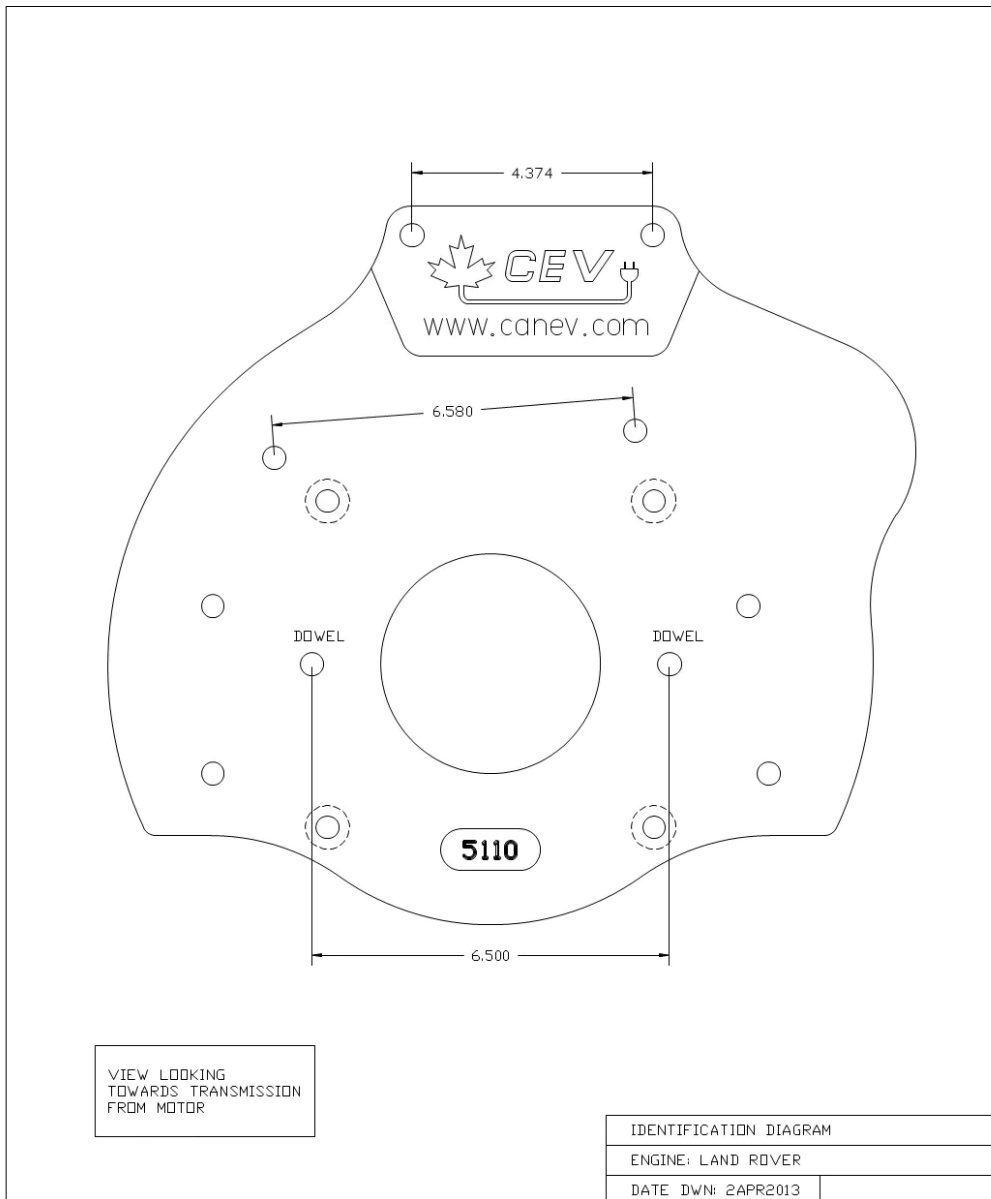
Specifications

- All adaptor kits come with required hardware
- If using the HyPer9 motor, you may also need a shaft collar spacer.

Fits:

- 1983-1993 Land Rover 90, 110 & 127
- 1958-1961 Land Rover Series II
- 1971-1985 Land Rover Series III

Dimensions – Land Rover 2.25L Adaptor Kit - CEV5117



Dimensions – Land Rover 2.25L Adaptor Kit - CEV5117 (cont.)

