

Honda D-Series Adaptor Kit – CEV5143

CEV5143



Overview

All adapters retain use of original clutch and fit most NetGain Hyper9, WARP 9 and HPEV AC34/AC35/AC50/AC51 Motors. Some adapter plates may have more or less bolt holes than your make and model of vehicle requires. As some adapters span a broad range of model years the adapter is designed to have enough bolt holes to be compatible with all model designs.

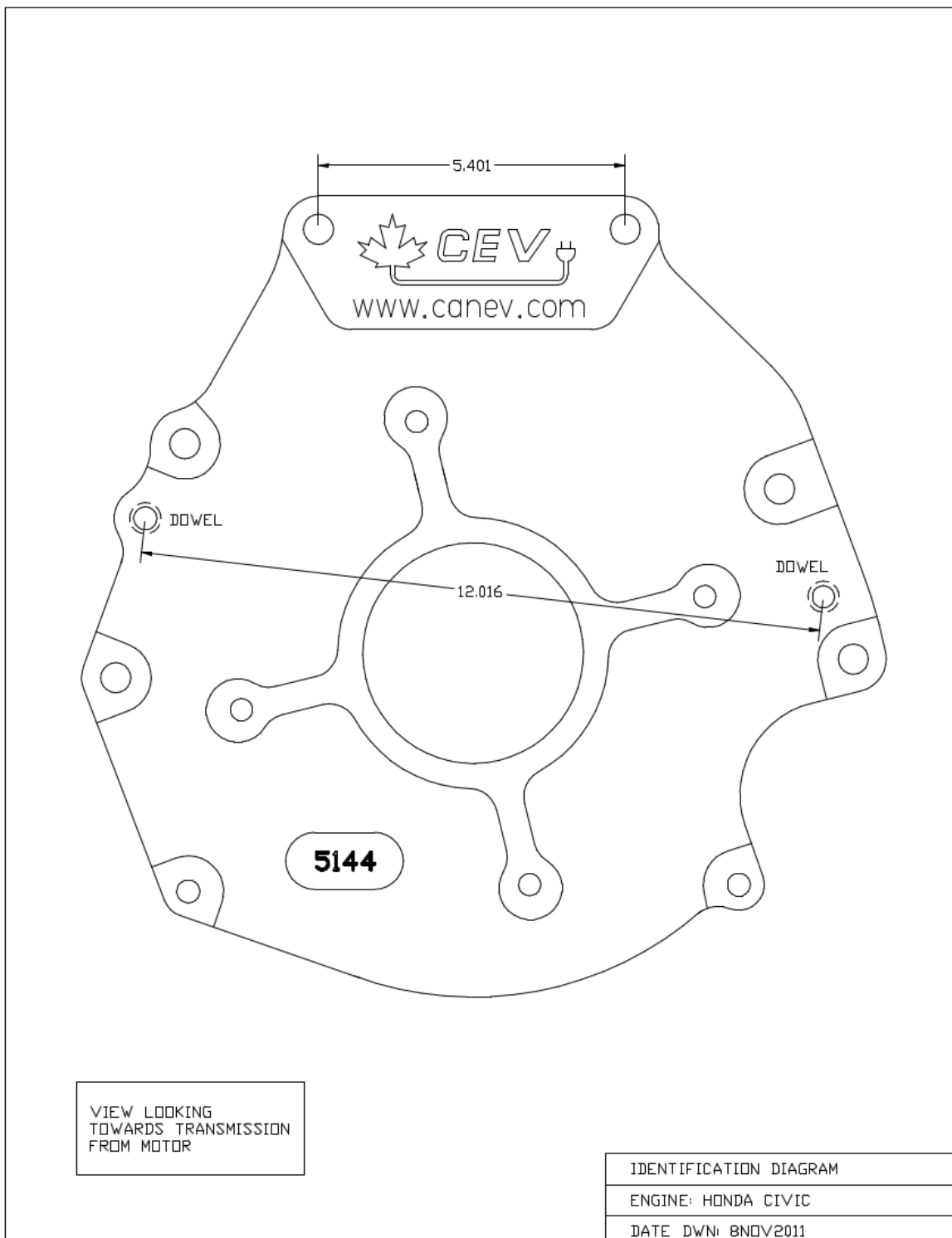
Specifications

- All adapter kits come with required hardware
- If using a HyPer9 motor, you may also need a shaft collar spacer, which is included

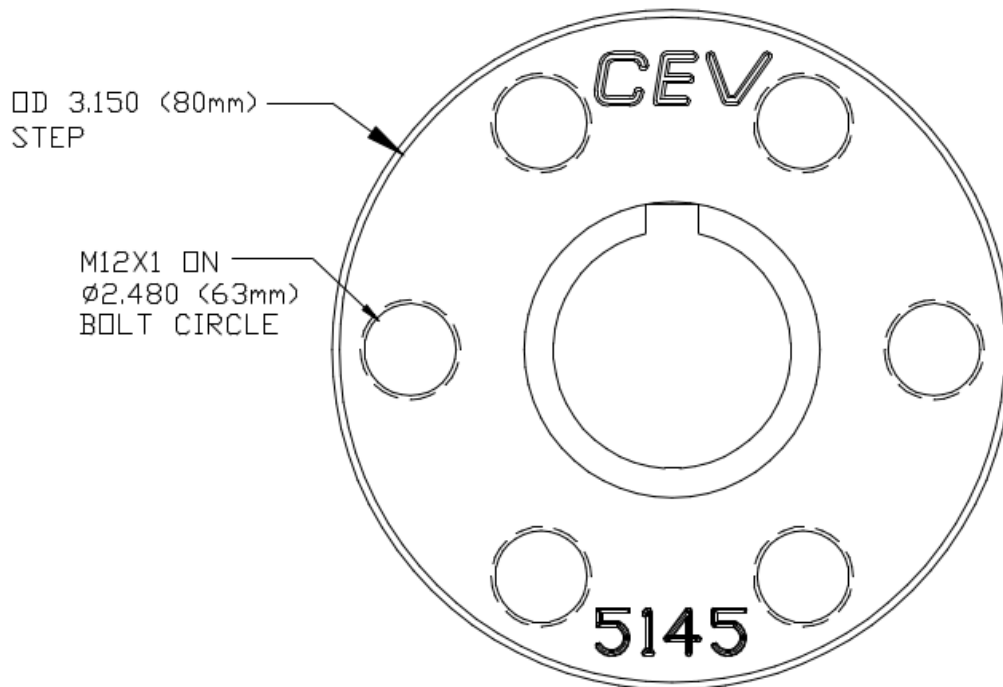
Compatible Vehicles – Honda D-Series Adaptor Kit CEV5143

- 1988-2005 Honda Civic & CRX
- 1986-1989 Acura
- 1989-1997 Rover 216

Dimensions – Honda D-Series Adaptor Kit CEV5143



Dimensions – Honda D-Series Adaptor Kit CEV5143 (cont.)



VIEW LOOKING
TOWARDS MOTOR

HUB IDENTIFICATION DIAGRAM

ENGINE: HONDA CIVIC

DATE DWN: 29JUL2012