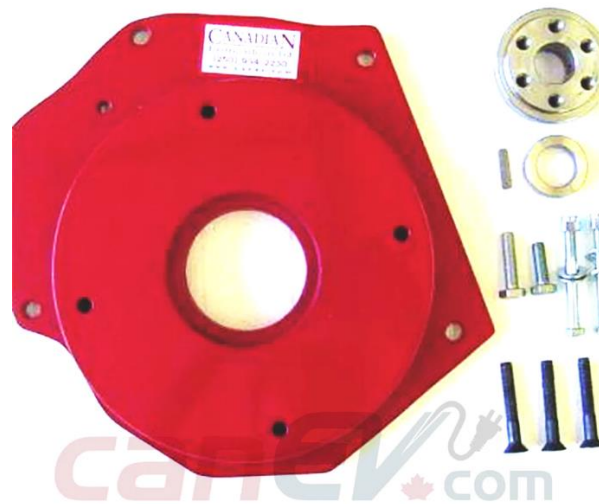


Geo/Suzuki Adaptor Kit – CEV5121

CEV5121



Overview

All adapters retain use of original clutch and fit most NetGain Hyper9, WARP 9 and HPEV AC34/AC35/AC50/AC51 Motors. Some adapter plates may have more or less bolt holes than your make and model of vehicle requires. As some adapters span a broad range of model years the adapter is designed to have enough bolt holes to be compatible with all model designs.

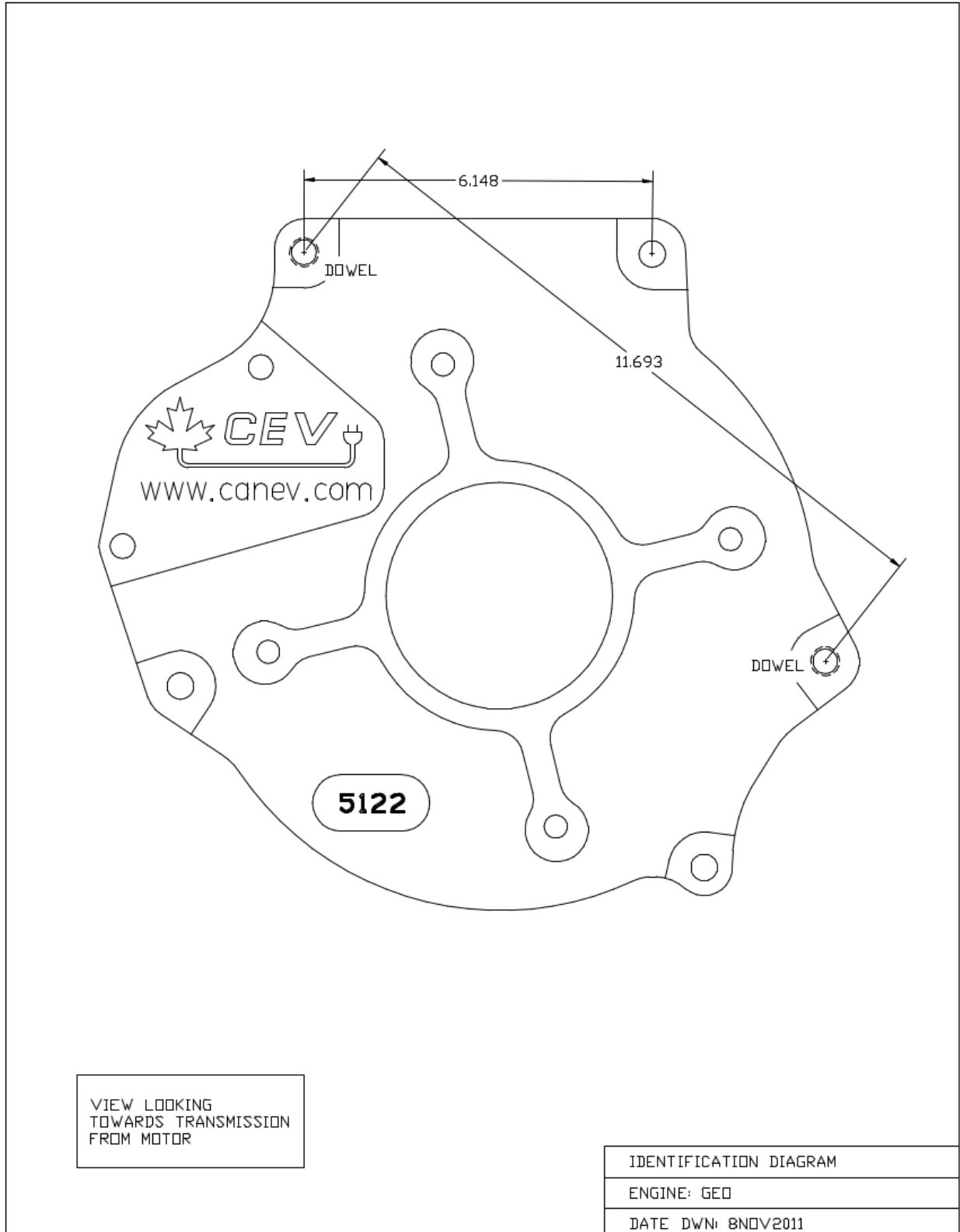
Specifications

- All adapter kits come with required hardware
- If using a HyPer9 motor, you may also need a shaft collar spacer, which is included

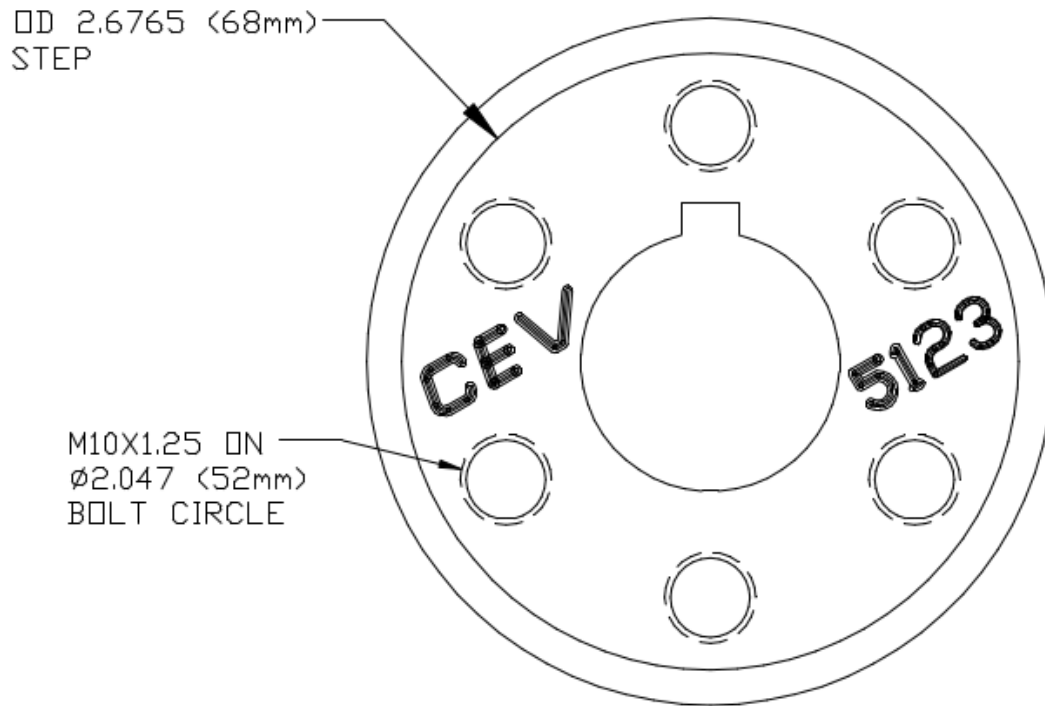
Compatible Vehicles – Geo/Suzuki Adaptor Kit CEV5121

- Suzuki G & F series 1.0L – 2.0L (Geo Metro)
- 1.0 L Suzuki I3
- 1.0 L Suzuki Turbo I3
- 1.3 L Suzuki I4
- 1.3 L Suzuki I4 16v
- 1.6 L Suzuki I4
- 2.0L
- Suzuki Cultus Esteem
- Suzuki Swift
- Geo Metro
- Pontiac Firefly
- Maruti Suzuki 1000/Esteem
- Holden Barina
- Chevrolet Swift (Colombia)
- Chevrolet Sprint (Canada)
- Subaru Justy (Europe) 1994 – 2003
- Suzuki Cultus (Pakistan)
- Suzuki Amenity (Indonesia, Hatchback)
- Suzuki Esteem (Indonesia; Sedan)
- Maruti Esteem (India; Sedan)
- Chang'an SC7130 Gazelle
- Suzuki Escudo
- Suzuki Sidekick
- Suzuki Samurai
- Suzuki Vitara
- Suzuki Jimny
- Suzuki X-90
- Chevrolet Tracker (1998 & 1989-1991 Canada)
- GMC Tracker
- As-na/Pontiac Sunrunner
- Chevrolet Vitara

Dimensions – Geo/Suzuki Adaptor Kit – CEV5121



Dimensions – Geo/Suzuki Adaptor Kit – CEV5121 (cont.)



VIEW LOOKING
TOWARDS MOTOR

HUB IDENTIFICATION DIAGRAM

ENGINE: GEO

DATE DWN: 29JUL2012