

Ford Ranger 3L Adaptor Kit – CEV5104

CEV5104



Overview

All adapters retain use of original clutch and fit most NetGain Hyper9, WARP 9 and HPEV AC34/AC35/AC50/AC51 Motors. Some adapter plates may have more or less bolt holes than your make and model of vehicle requires. As some adapters span a broad range of model years the adapter is designed to have enough bolt holes to be compatible with all model designs.

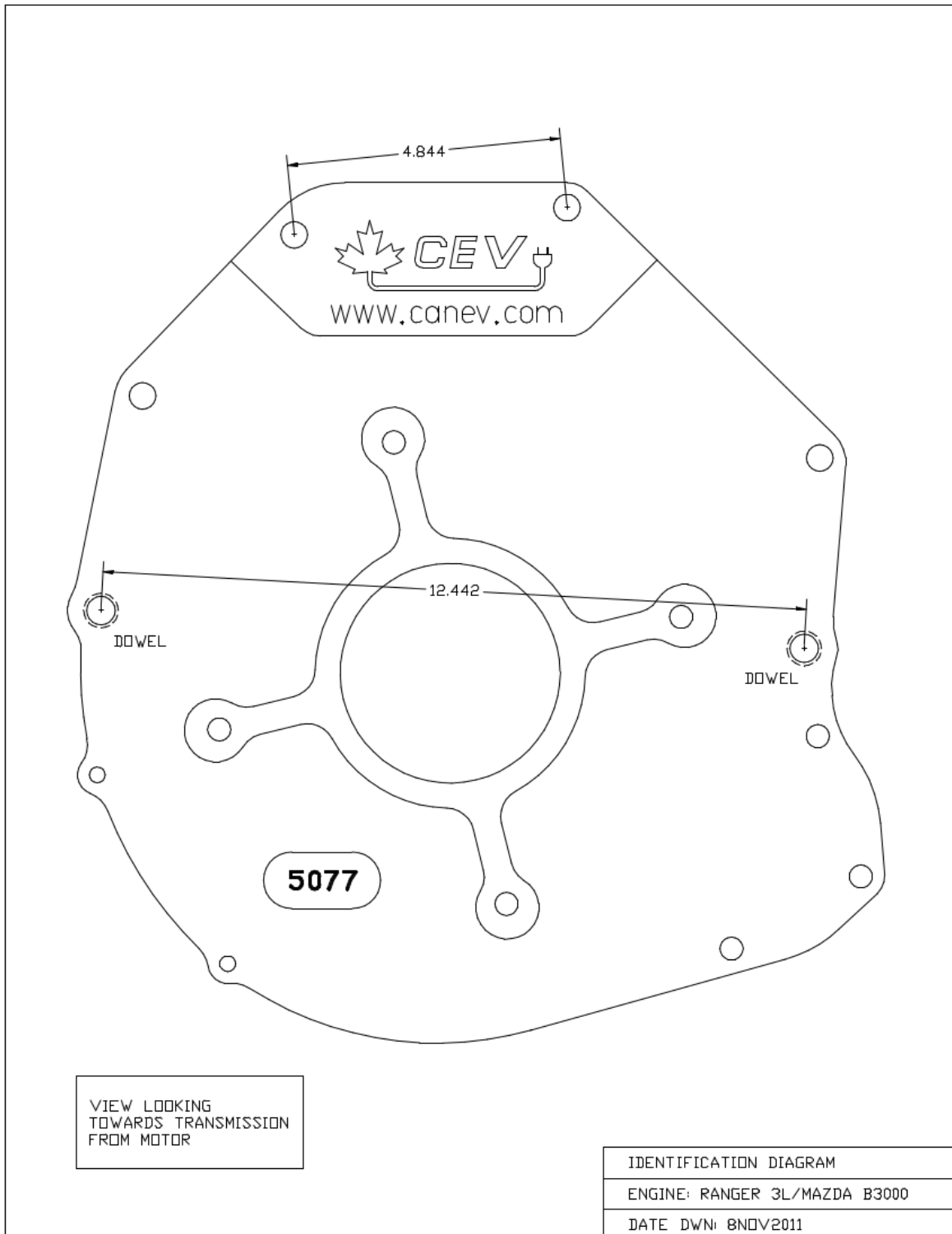
Specifications

- All adapter kits come with required hardware
- If using a HyPer9 motor, you may also need a shaft collar spacer, which is included

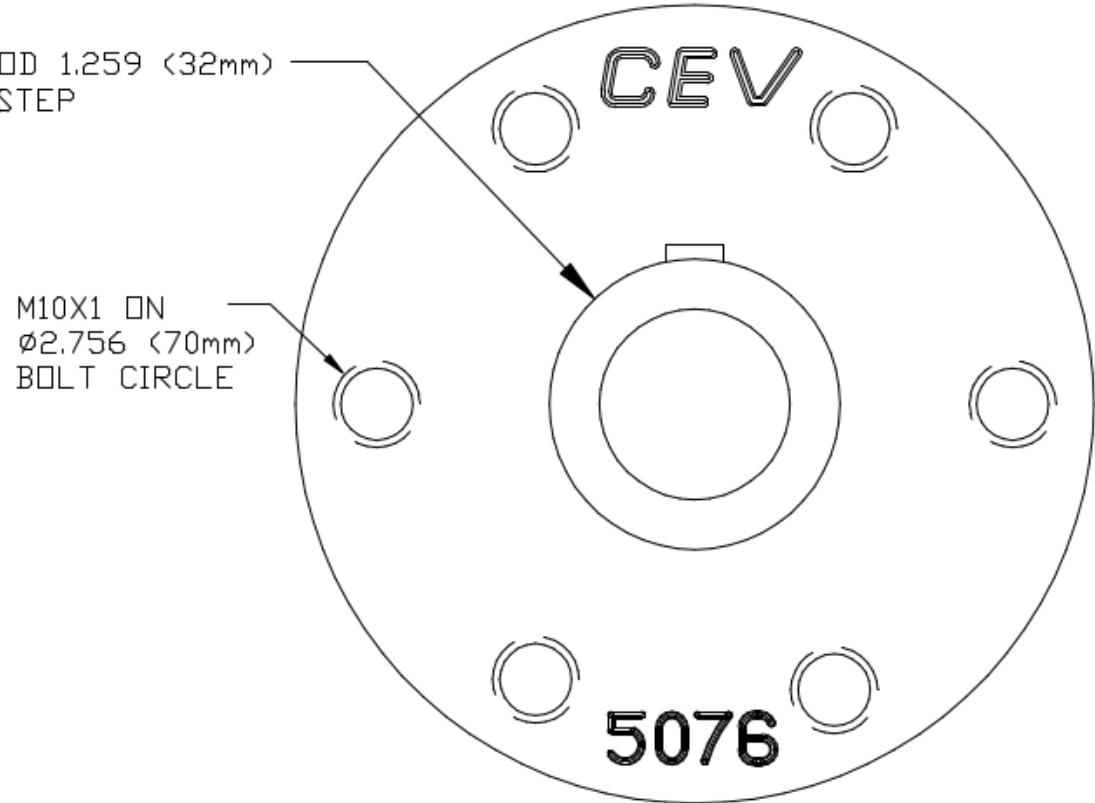
Compatible Vehicles

- Ford Ranger 3L
- Mazda B3000

Dimensions – Ford Ranger 3L Adaptor Kit CEV5104



Dimensions – Ford Ranger 3L Adaptor Kit CEV5104 (cont.)



VIEW LOOKING
TOWARDS MOTOR

HUB IDENTIFICATION DIAGRAM
ENGINE: RANGER 3L/MAZDA B3000
DATE DWN: 29JUL2012