

Ford Ranger 2.8, 2.9, & 4L Adaptor Kit – CEV5101



Overview

All adapters retain use of original clutch and fit most NetGain Hyper9, WARP 9 and HPEV AC34/AC35/AC50/AC51 Motors. Some adapter plates may have more or less bolt holes than your make and model of vehicle requires. As some adapters span a broad range of model years the adapter is designed to have enough bolt holes to be compatible with all model designs.

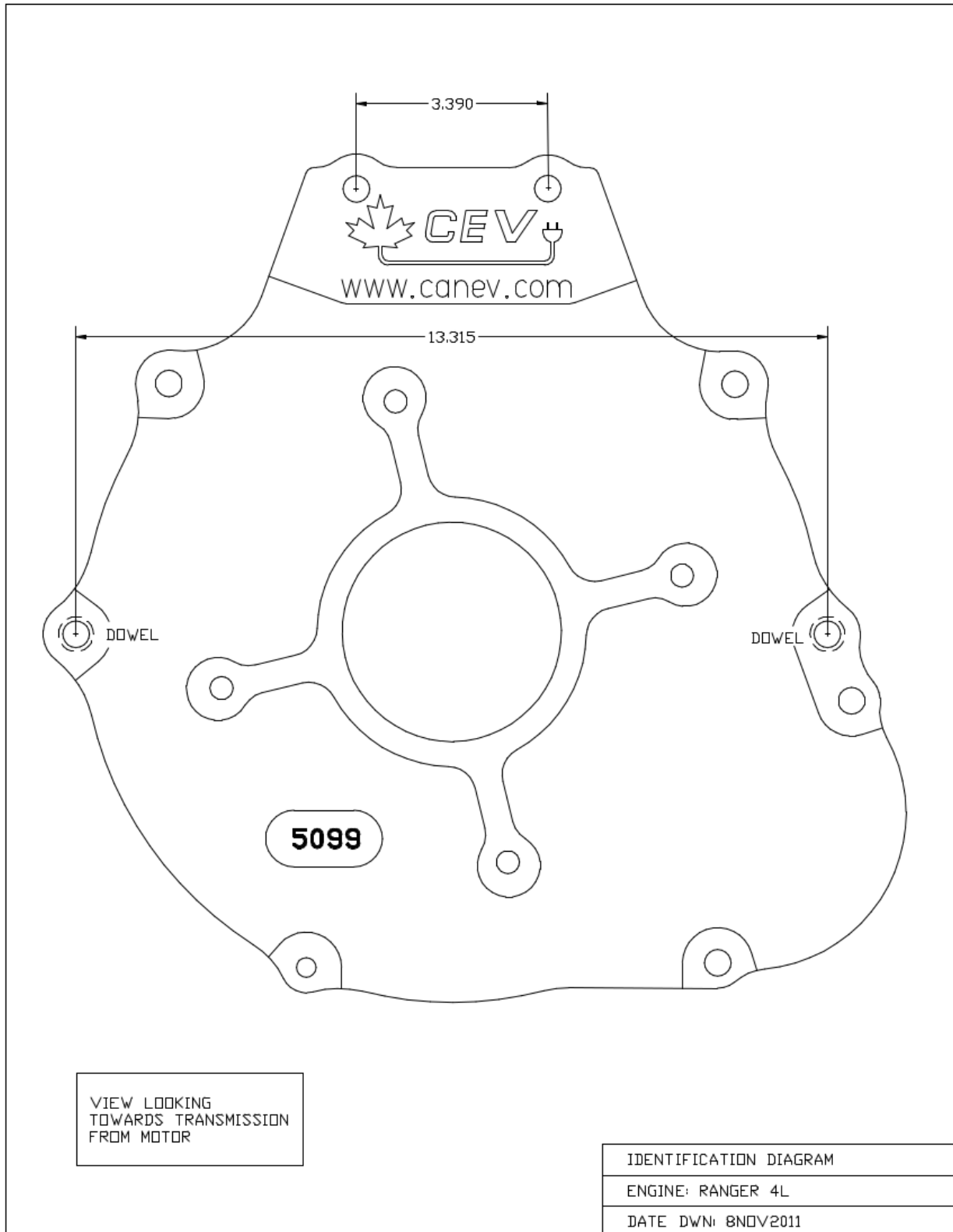
Specifications

- All adapter kits come with required hardware
- If using a HyPer9 motor, you may also need a shaft collar spacer, which is included

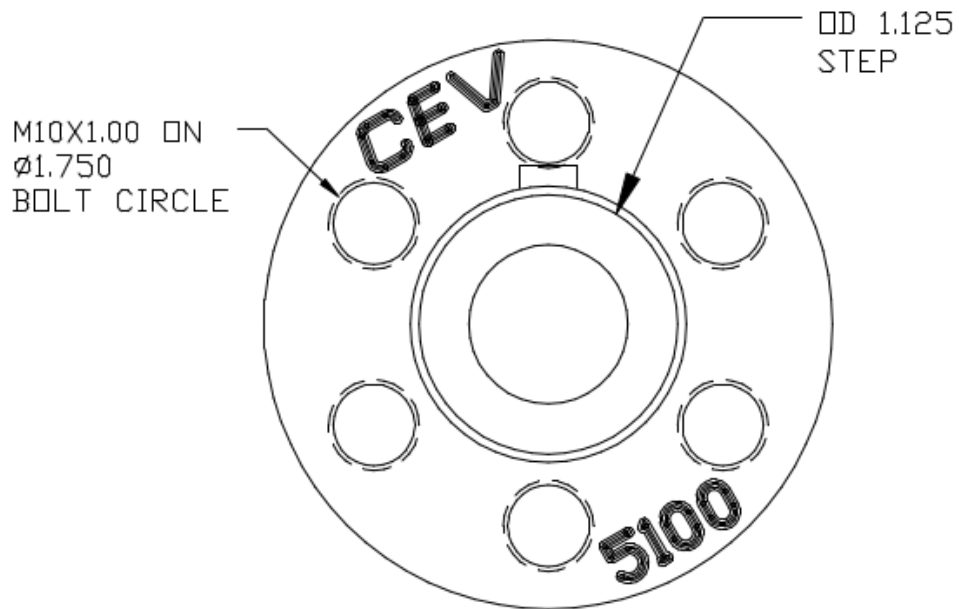
Compatible Vehicles – Ford Ranger 2.8, 2.9 & 4L Adaptor Kit CEV5101

- Ranger 2.8 2.9 4L
- TVR 280i/Tasmin
- TVR S Series
- Ford Ranger
- Ford Bronco II
- Ford Aerostar
- Ford Pinto
- Mercury Bobcat
- Mercury Capri
- Ford Mustang II
- Ford Granada
- Ford Capri III
- Ford Sierra
- Ford Scorpio
- Bandvagn 206
- Reliant Scimitar (1979 onwards)
- Panther Kallista
- TVR S2/S3(C)/S4C
- Ford Bronco II
- Ford Ranger
- Ford Sierra XR 4X4
- Ford Granada
- Ford Transit
- Merkur Scorpio
- Panther Kallista
- Ford Ranger/Mazda B-Series
- Ford Explorer/Mazda Navajo
- Cross Lander 244X
- Ford Aerostar (1990 – 1997)
- Saab 96 v4
- Saab 95 v4
- Saab Sonett V4
- Saab Sonett III

Dimensions – Ford Ranger 2.8, 2.9 & 4L Adaptor Kit CEV5101



Dimensions – Ford Ranger 2.8, 2.9 & 4L Adaptor Kit CEV5101 (cont.)



VIEW LOOKING
TOWARDS MOTOR

HUB IDENTIFICATION DIAGRAM

ENGINE: RANGER 4L 6 BOLT

DATE DWN: 29JUL2012