



Ford Duratec 2.3L Adaptor Kit – CEV5095

CEV5095



Overview

canEV adapter kits are designed to simplify your conversion while saving you considerable time and money. Every kit is custom engineered and manufactured in-house to exacting specifications and highest quality standards. Our kits have been used successfully in thousands of conversions for over 2 decades.

canEV's adapters retain the use of original clutch and are designed to be used with "B-Face" motors from NetGain such as the Hyper 9 and WARP 9, and motors from HPEVS like the AC34/AC35/AC50/AC51 Motors.

Some adapter plates may have more or less bolt holes than your make and model of vehicle requires as some kits span a broad range of model years. Some adapters may require trimming or other minor modifications for clearance when used in some applications.

Notes

All adapter kits come with required hardware however some hardware may not be correct or optimal for all applications. Additional hardware or slightly longer or shorter bolts may be required. This is because the bellhousings are not all the same for all possible fitments of some adapters. Flywheel bolts are generally not included as you can reuse the factory flywheel bolts.

If the Pilot Bearing is installed in the crankshaft it is provided in the kit. Alternatively, if the pilot bearing is installed in the flywheel it is assumed that you will be reusing it or sourcing a new one if needed. If using a Netgain HyPer 9 motor, you will need to install the included shaft collar spacer on the shaft before installing the hub. Some hubs are larger than the motor pilot diameter and must be installed after the adapter plate is bolted to the motor.

Specifications

Bell Housing Adaptor Plate:	Cast Aluminum
Flywheel Adaptor:	Steel
Motor Pilot Diameter:	4.0"
Motor Bolt Circle:	4 on 8.4"
Motor Shaft Size:	1.125" with ¼" Square Key

Adapter may fit the following:

- See Compatible Vehicles below

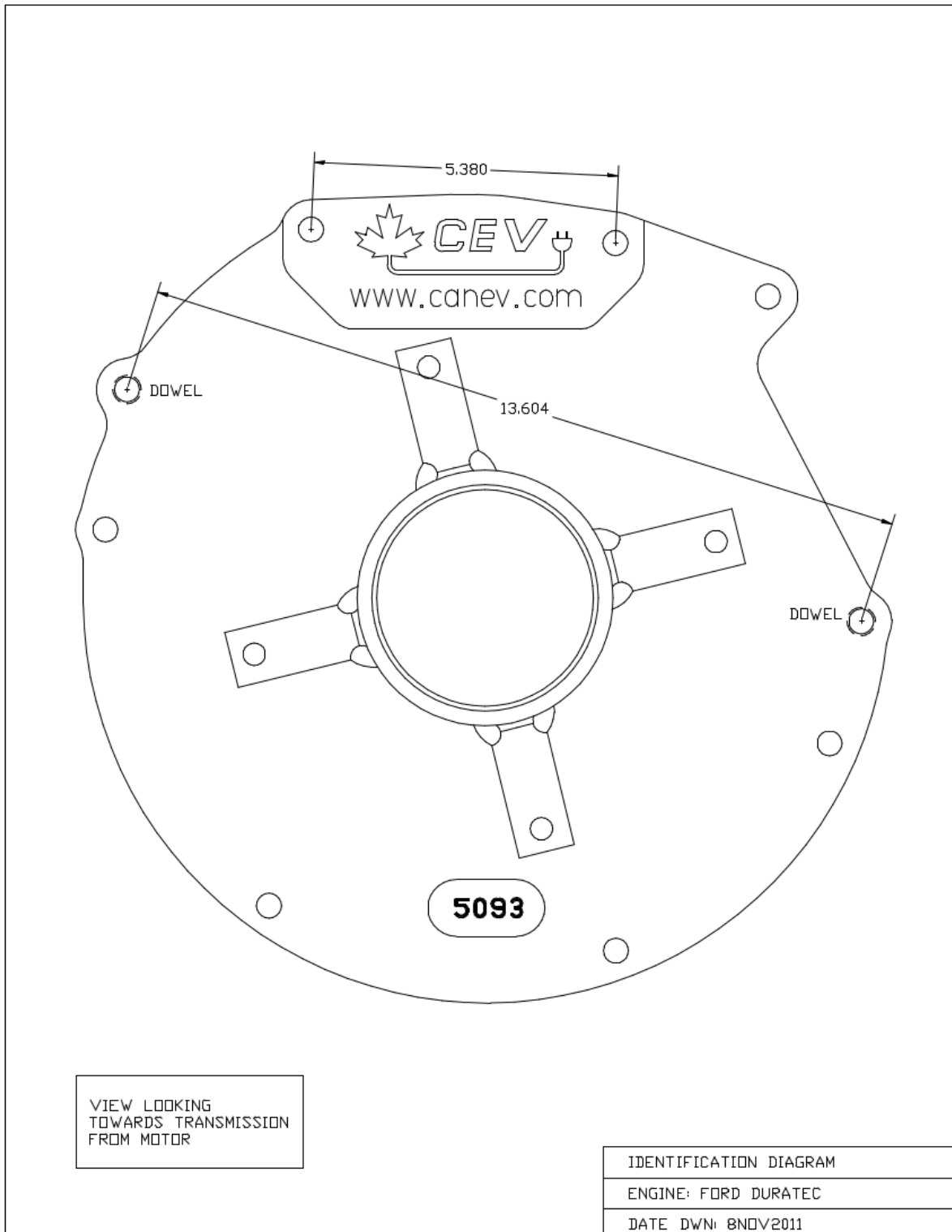
Important*

Buyer must confirm fitment using the drawings below. canEV will not be responsible for return shipping costs and returned product is subject to restocking fees.

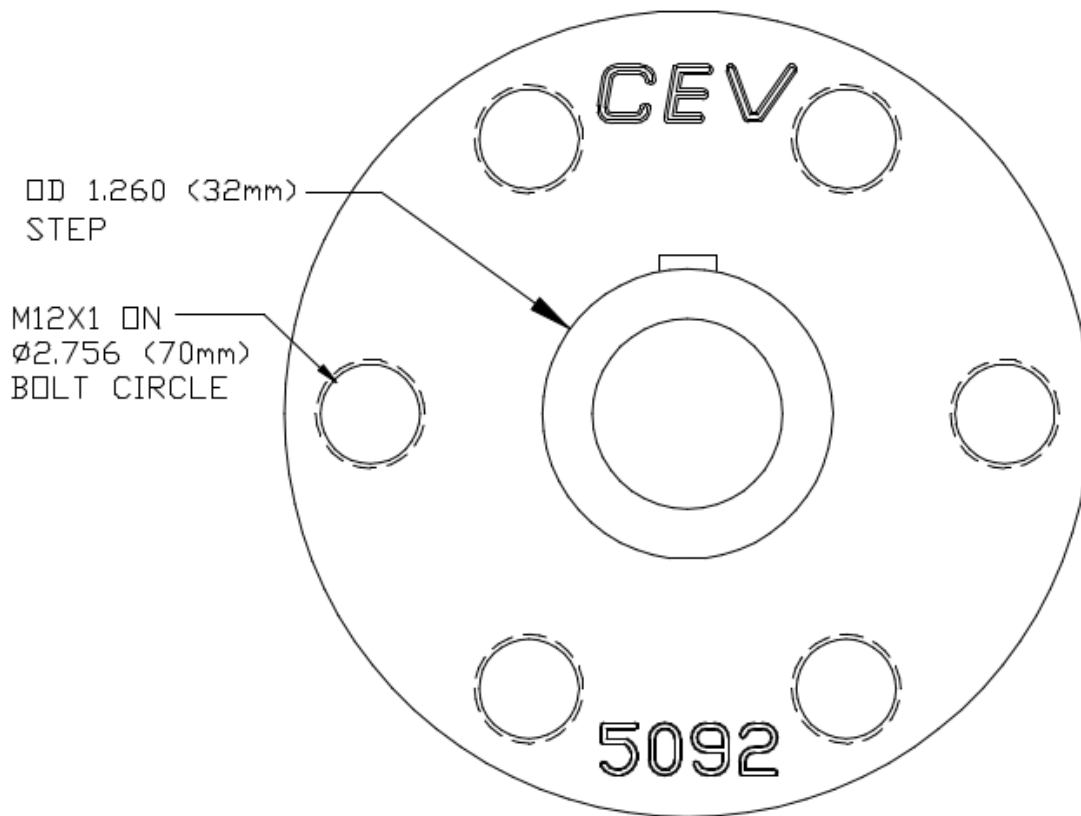
Compatible Vehicles – Ford Duratec 2.3L Adaptor Kit CEV5095

<p>23EW – FWD/AWD 2001 – 2011 Mazda B-Series Mazda Tribute Hybrid 2007-2010 Ford C-Max 2004 Ford EcoSport 2003 – 2011 Ford Focus 2000 – 2007 Ford Mondeo 2010 – 2012 Ford Transit Connect 2004 – 2005 Mazda Axela/Mazda3 2002 – 2008 Mazda6 for Europe 2006 – 2007 Mazda Premacy/Mazda5 2006 – 2015 Mazda MX-5 2006 – 2010 Volvo C30 2007 – 2010 Volvo S40 2007 – 2010 Volvo V50 2003 – 2007 Ford Focus 2004 – 2007 Mazda Axela/Mazda3 2003 – 2008 Mazda Atenza/Mazda6 2005 – 2008 Ford Escape/Mazda Tribute/Mercury</p>	<p>2006 – Mazda MPV (JDM o 2008 – Mazda Atenza/Mazda6 (non-North America) 2009 – Mazda6 (North America) 2009- Mazda Tribute 2010 – * Mazda Axela/Mazda3 2010 – Ford Fusion 2010 – 2011 Mercury Milan 2009 – Ford Escape 2014 – Ford Transit Connect Mariner 2002 – 2005 Mazda MPV 2006 – 2009 Mazda Premacy/Mazda5 2006 – 2009 Ford Fusion/Mercury Milan 2010 – Thoroughbred Motorsports “Stallion” Trike 2001 – 2010 Mazda B2300 2001 – 2011 Ford Ranger Mazdaspeed6/Atenza MPS Mazda CX-7 Mazdaspeed3/Axela MPS</p>
--	---

Dimensions – Ford Duratec 2.3L Adaptor Kit CEV5095



Dimensions – Ford Duratec 2.3L Adaptor Kit CEV5095 (cont.)



VIEW LOOKING
TOWARDS MOTOR

HUB IDENTIFICATION DIAGRAM
ENGINE: FORD DURATEC
DATE DWN: 29JUL2012