

Chevy V6-V8 Adaptor Kit – CEV5031

CEV5031



Overview

All adapters retain use of original clutch and fit most NetGain Hyper9, WARP 9 and HPEV AC34/AC35/AC50/AC51 Motors. Some adapter plates may have more or less bolt holes than your make and model of vehicle requires. As some adapters span a broad range of model years the adapter is designed to have enough bolt holes to be compatible with all model designs.

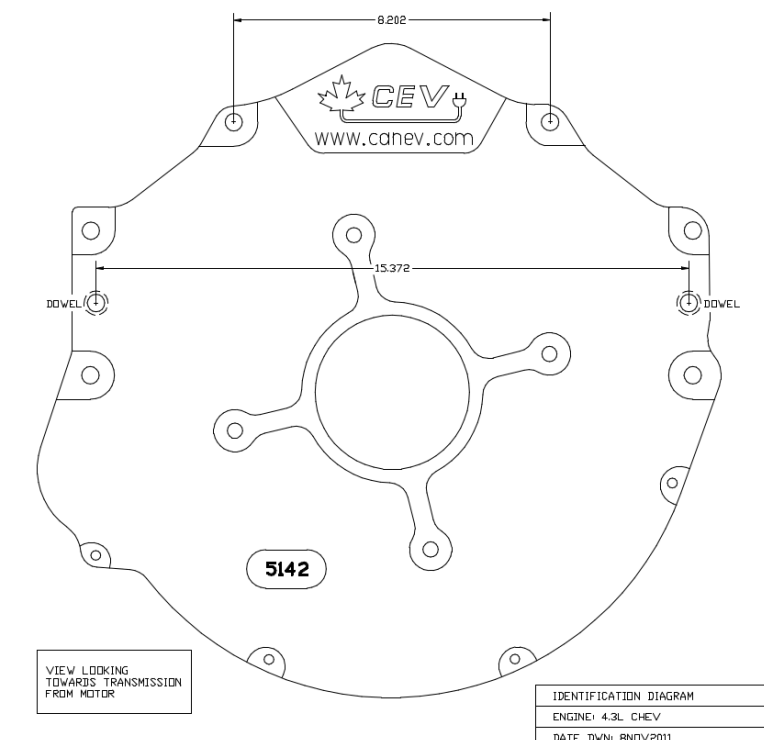
Specifications

- All adapter kits come with required hardware
- If using a HyPer9 motor, you may also need a shaft collar spacer, which is included

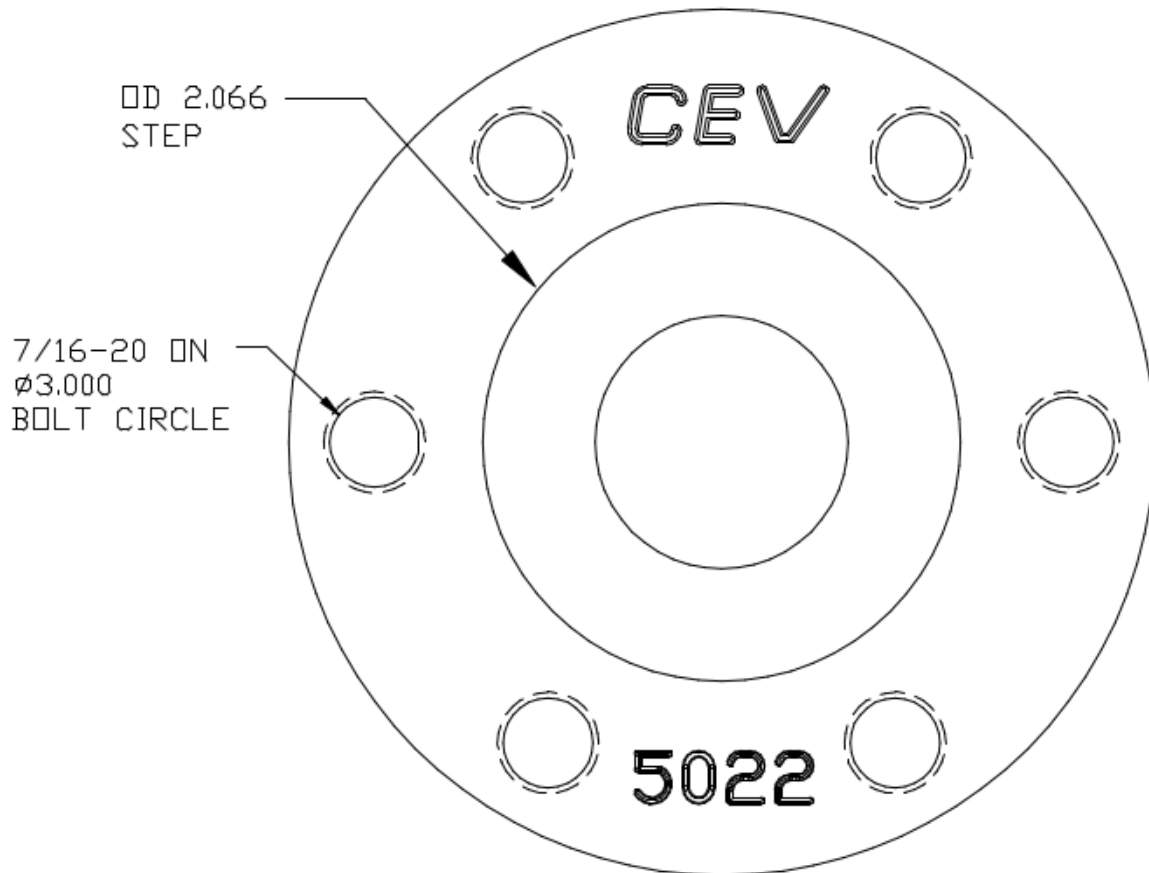
Compatible Vehicles

- 1976-1992 Chevrolet Camaro
- 1980 Chevrolet Corvette (California only)
- 1977-1996 Chevrolet Caprice (includes Impala)
- 1977-1986 Pontiac Parisienne
- 1976-1979 Chevrolet Monza
- 1976-1979 Chevrolet Nova (also GM X-body clones after 1976)
- 1976-1988 Chevrolet Malibu, Chevrolet El Camino, and Chevrolet Monte Carlo
- 1978-1992 Pontiac Firebird
- 1978-1980 Oldsmobile Cutlass (US Market only, Canadian market 1978-1987)
- 1991-1992 Oldsmobile Custom Cruiser
- 1981-1987 Pontiac Grand Prix
- 1975-1979 Buick Skylark
- 1977-2003 Chevrolet/GMC Trucks, SUVs, Vans
- 1991-1992 Cadillac Brougham
- 1978-1987 Buick Regal

Dimensions – Chevy V6-V8 Adaptor Kit – CEV5031



Dimensions – Chevy V6-V8 Adaptor Kit – CEV5031 (cont.)



VIEW LOOKING
TOWARDS MOTOR

HUB IDENTIFICATION DIAGRAM

ENGINE: 4.3L CHEV

DATE DWN: 29JUL2012