

## Chevy S10 2.2L / 2.8L Adaptor Kit – CEV5028

CEV5028



### Overview

All adapters retain use of original clutch and fit most NetGain Hyper9, WARP 9 and HPEV AC34/AC35/AC50/AC51 Motors. Some adapter plates may have more or less bolt holes than your make and model of vehicle requires. As some adapters span a broad range of model years the adapter is designed to have enough bolt holes to be compatible with all model designs.

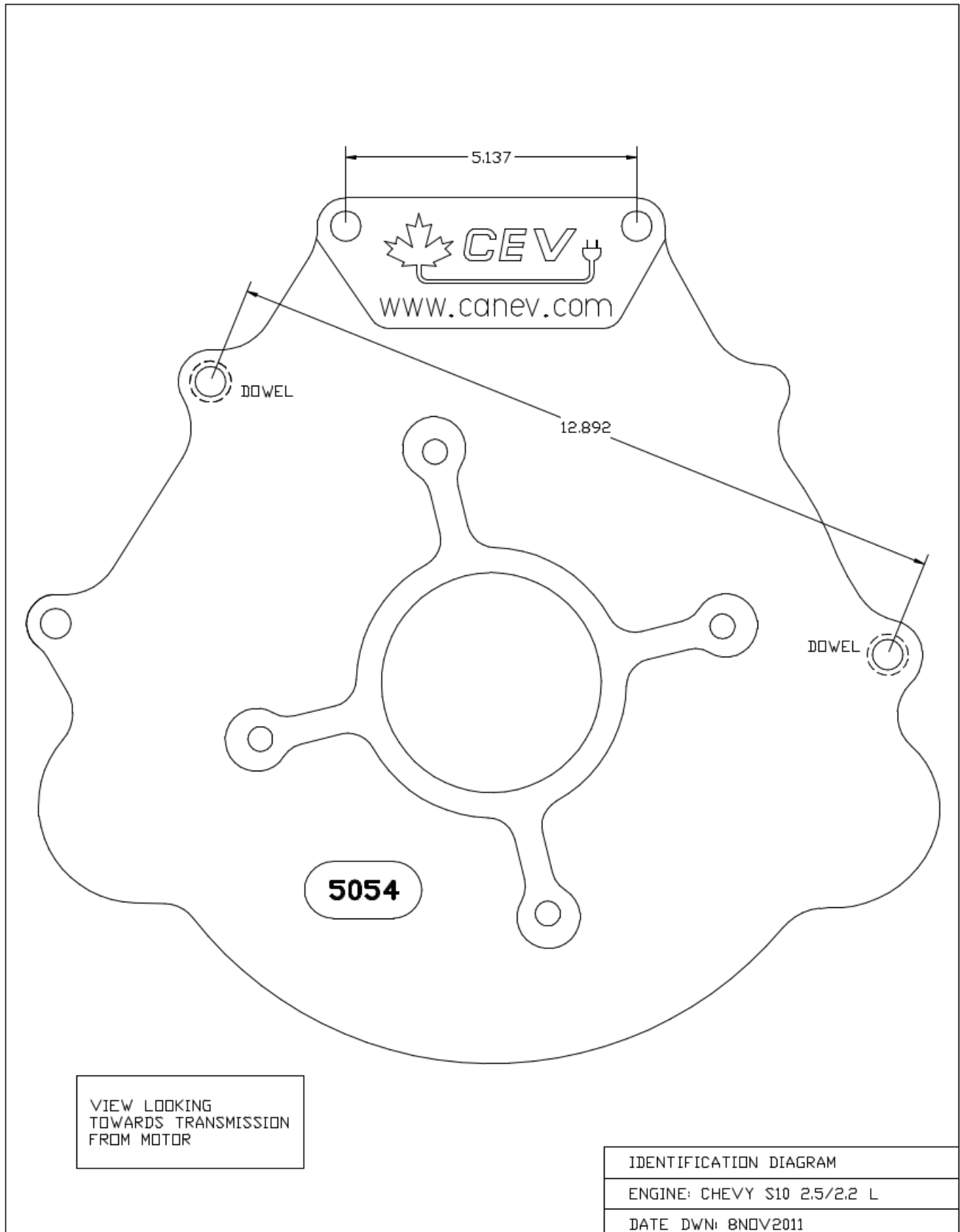
### Specifications

- All adaptor kits come with required hardware
- If using the HyPer9 motor, you may also need a shaft collar spacer.

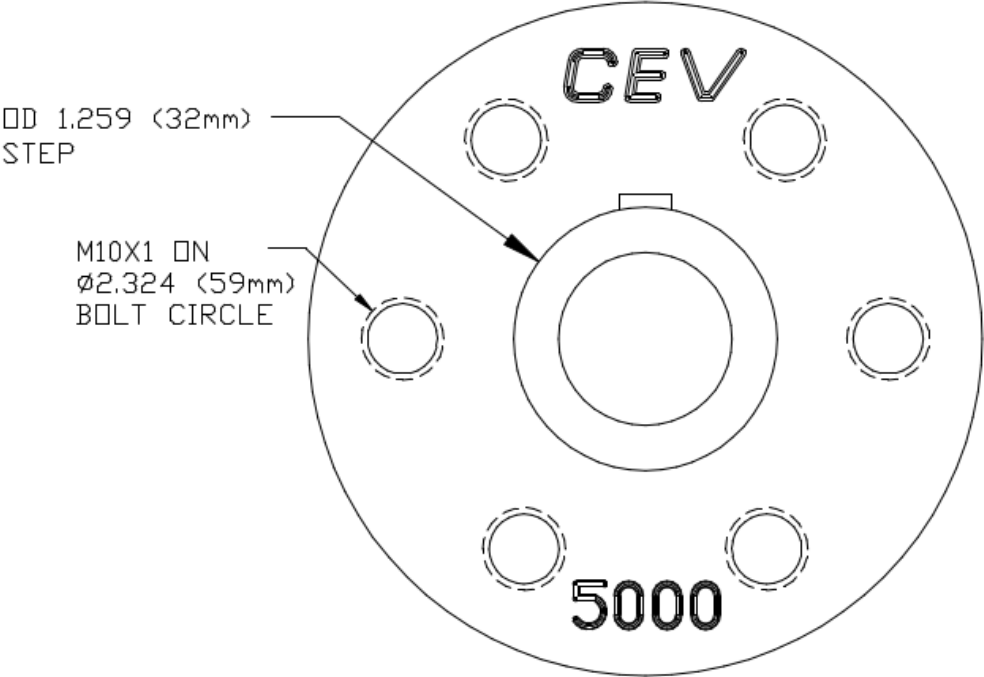
### Fits:

- 1984-1988 Pontiac Fiero
- 1982-1989 Pontiac Firebird
- 1986-1992 Chevrolet Camaro
- Chevrolet S10
- Chevrolet S10 Blazer
- GMC Sonoma
- GMC S15 Jimmy
- 1980-1985 Buick Skylark
- 1983-1989 Pontiac 6000

# Dimensions – Chevy 2.2L / 2.8L Adaptor Kit – CEV5028



# Dimensions – Chevy 2.2L / 2.8L Adaptor Kit – CEV5028 (cont.)



VIEW LOOKING  
TOWARDS MOTOR

HUB IDENTIFICATION DIAGRAM
ENGINE: CHEV S10 2.2L
DATE DWN: 29JUL2012