

Antique Style Salt & Pepper Mill

Kit Features:

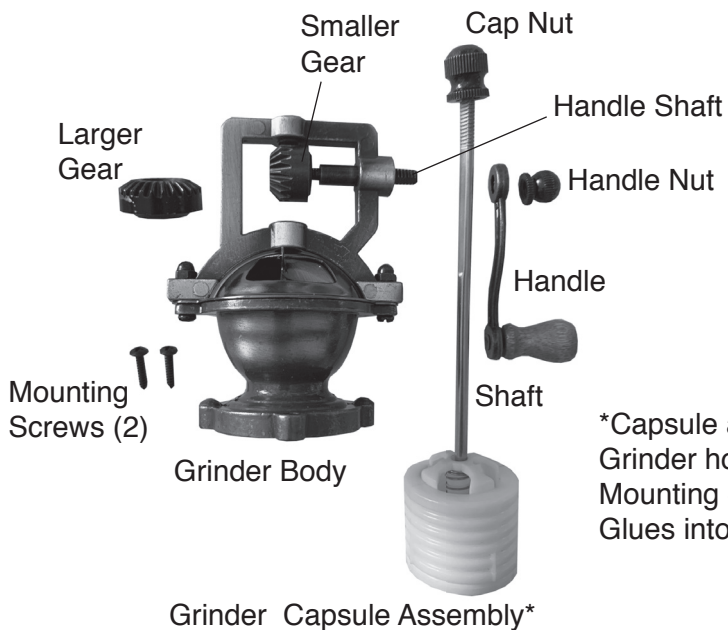
- Classy retro antique/steampunk styling
- Includes adjustable Ceramic Grinder suitable for grinding either salt or pepper
- New easy mount™ grinder capsule assembly simplifies assembly
- Cast metal component with salt safe plastic liner
- Make a Salt & Pepper mill Set
- 8" overall height

Required Accessories:

- 1" Forstner Bit, item #FB1
- 1½" Forstner Bit, item #FB150
- 1" Jam Chuck, item #CJAM1
- Grinder positioning jig (see Diagram C)
- Epoxy Glue
- 3 Jaw Drill Chuck
- Wood required: 2-1/4" or larger sq x 3-3/4" (Finished size)



PARTS - LIST

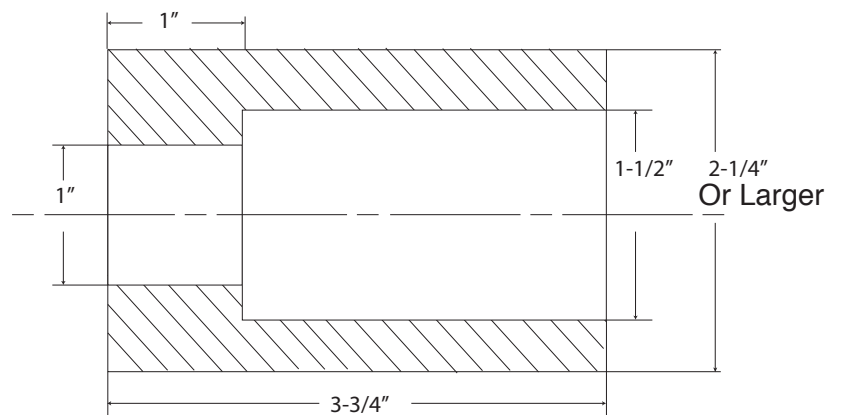


*Capsule assembly includes spring, Grinder stone, Grinder housing and Mounting components - Glues into mill housing

Preparing the Blank: Diagram A

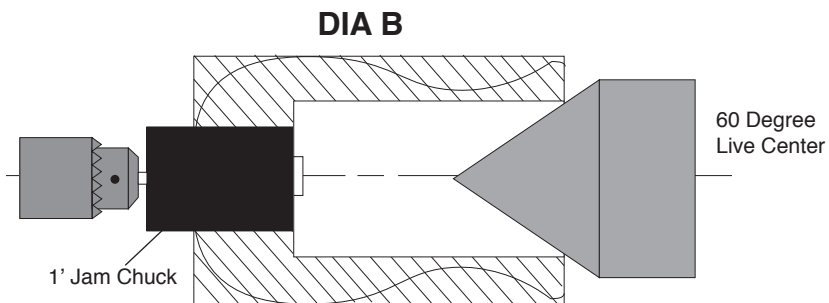
- Cut a square 90-degree blank to size
- Mark the center of each end
- Drill a 1" hole, 1" deep into one end
- Drill a 1½" hole at the opposite end to meet

DIA A: Drilling the Blank

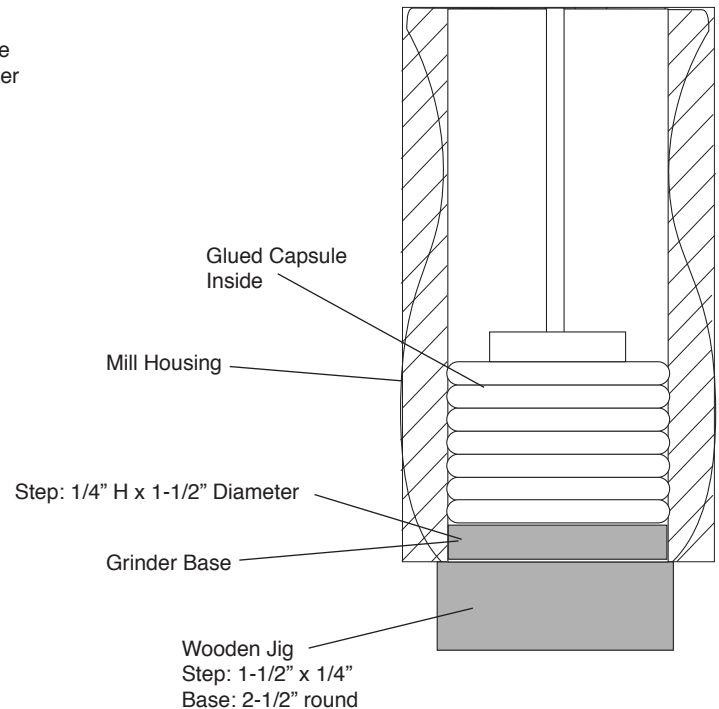


DIA B**Mounting & Turning the Blank**

Turning the blank between centers as shown below

**Dia C****Using the Jig**

Use Jig to position capsule for proper Assembly height Inside shaft

**NOTE:**

In order to determine the position of the grinder mechanism for gluing, a simple shop turned jig is helpful

Assembly

- Glue the grinding capsule into the hole in the wooden base 1/4" up from base. Use home made jig for best results
- Mix and spread epoxy glue over the ribs of the grinder assembly (refer to photo for complete assembly)
- Insert the capsule assembly through the bottom of the finished wood base, to rest over the jig. Let dry. See Diagram C
- Slide the body over the shaft
- Stop before reaching the end and insert and drop the large gear over the shaft to slide down
- Place the handle shaft, smaller thread in first, the threaded shaft should protrude about a 1/4" through the top of the grinder body. Attach and screw in the smaller gear
- Place the handle and thread in the handle nut.
- Thread on the cap nut to secure the assembly
- Pour rock salt or pepper seeds in through the sliding opening
- Adjust the grind by turning the cap nut up or down to adjust the grind from fine to course

