

RIKON

17" FLOOR DRILL PRESS 30-230

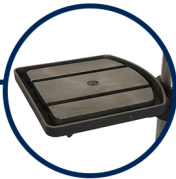
Multiple Spindle Speeds

16 available spindle speeds are available with a range from 200 to 3,630 RPM



Solid Work Surface

Comes with a 14" x 14" adjustable work table



5/8" Chuck

Chuck has a big 5/8" holding capacity



Solid Base

Base is made from sturdy cast iron with a wide footprint for stability



FEATURES:

• MOTOR

Horsepower.....	1 HP TEFC
Amps, Watts.....	13.5, 750W
Volts.....	120V, 60Hz
RPM.....	1,720
Swing.....	17"
Chuck Size.....	5/8"
Chuck Taper.....	JT3
Drilling Capacity.....	1"
Spindle Travel.....	3-1/8"
Spindle Taper.....	MT2
Head Rotates.....	360°
Speeds.....	16
Speed Range (RPM).....	200 - 3,630
Quill Diameter.....	66mm

DIMENSIONS:

• TABLE

Table.....	14" x 14"
Table Tilts.....	90°
Table Rotates.....	360°
Maximum Chuck to Table.....	25-1/4"
Maximum Chuck to Base.....	44-13/16"
Column Diameter.....	80mm

• OVERALL

Height.....	64-3/8"
Base Size.....	17-1/2" x 22-1/2"
Net Weight.....	188 lbs.
Shipping Weight.....	198 lbs.
Shipping Carton.....	55" x 21" x 9-1/2"

• WARRANTY.....5 YEARS



For more information or to find a distributor near you, please visit:

www.rikontools.com

RIKON

AVAILABLE ACCESSORIES
30-230



12-201

LED Gooseneck Worklight
with Magnetic Base and
Magnetic Clip



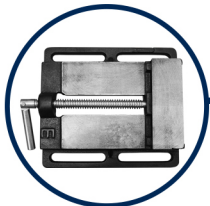
29-202

Mortising Kit



Chisel & Bit

1/4" - 29-914L
5/16"- 29-915L
3/8" - 29-913
1/2" - 29-912



Vises

3" Drill Press Vise - 93-010
4" Drill Press Vise - 93-020
5" Drill Press Vise - 93-030
6" Drill Press Vise - 93-040



For more information or to find a distributor near you, please visit:

www.rikontools.com