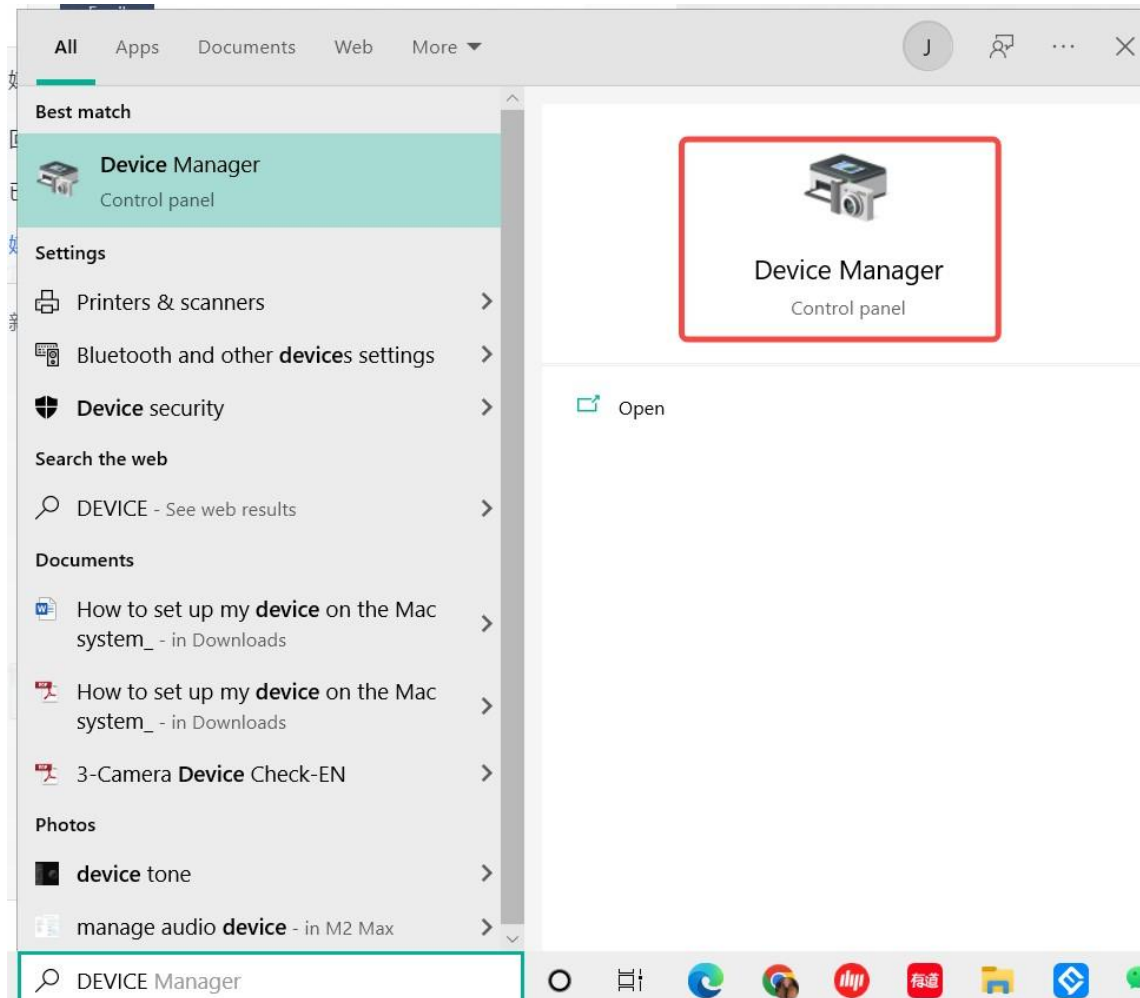


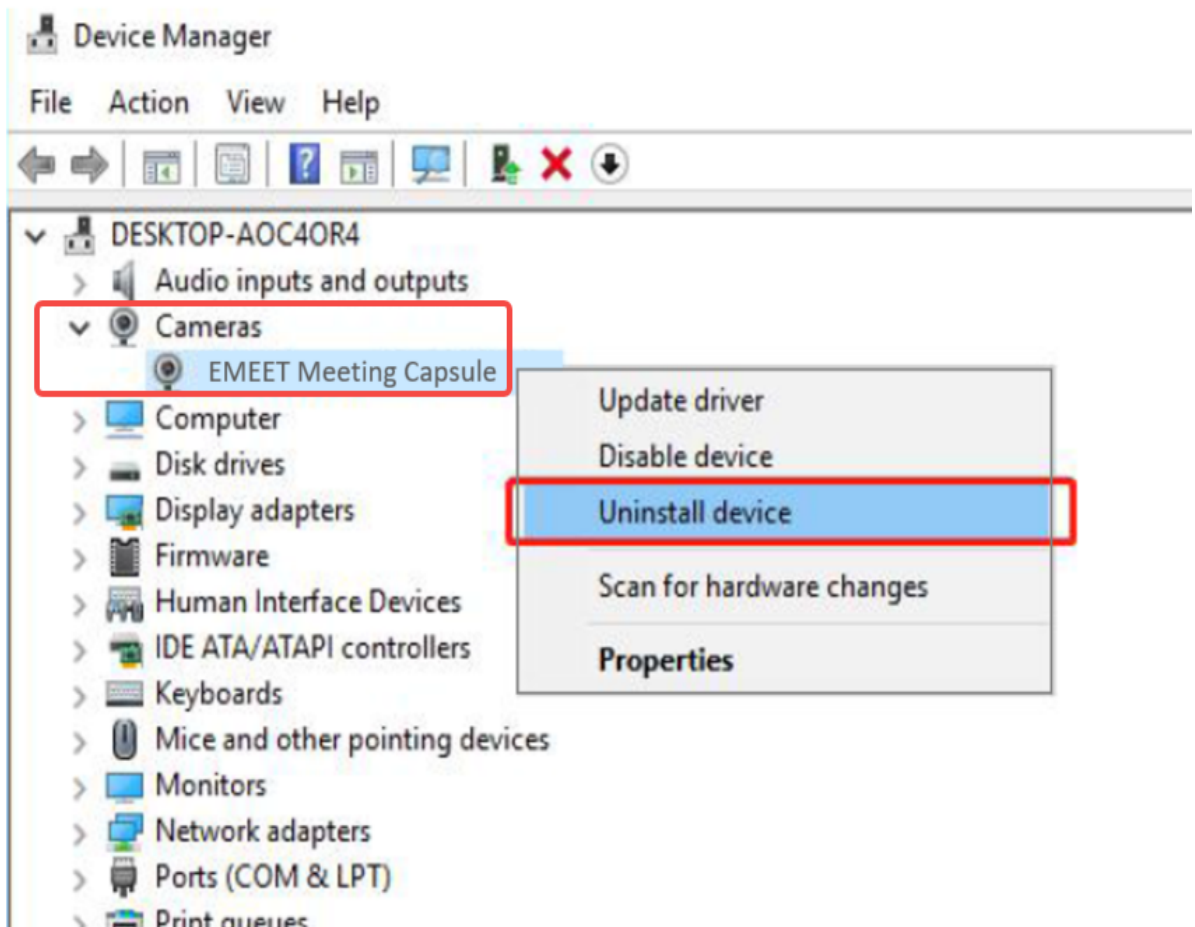
Driver Settings

EMEET Meeting Capsule

1. Search for "device manager" in the lower-left corner, click it to enter the settings.



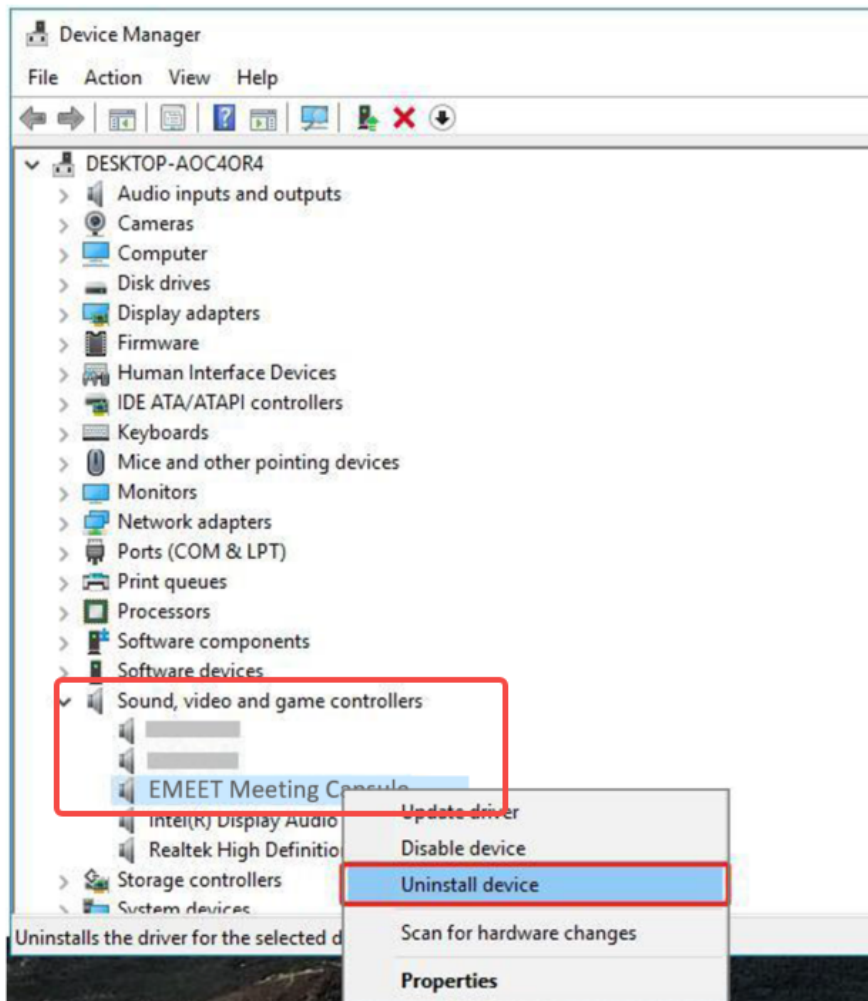
2. Select "Cameras", move your mouse to "EMEET Meeting Capsule", then right-click.



3. Select "Uninstall device", and click "Uninstall" to complete the uninstallation.



4. Select "Sound, video and game controllers", move your mouse to "EMEET SmartCam S600", then right click.



5. Select "Uninstall device", and click "Uninstall" to complete the uninstallation.



6. Re-plug the device into the computer, and the device will appear again in the list.

