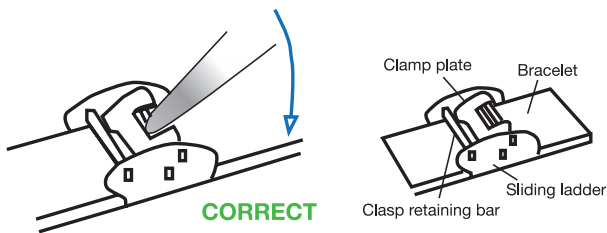


### MESH BRACELET - ADJUSTMENT INSTRUCTION

#### UNLOCK CLASP AND SLIDE INTO PLACE

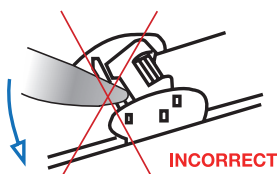
1. Unlock "Clamp plate" by using a sharp object or even a simple paperclip.
2. Move the entire clasp to adjust length by sliding along the bracelet. Adjust length while wearing the watch to make sure you get a good fit.



#### LOCK CLASP

1. Make sure the Clasp link into a molded "Indent" on back of bracelet.
2. Lock "Clamp plate" in position by pressing it into place using your thumb.

**DO NOT:** Unlock "Clamp plate" by leverage onto the "Retaining bar". This will bend the bar unable you to connect clasp together on wrist.



Remove the **plastic stopper** underneath the crown. Then push the crown back in to activate the battery.

### SETTING THE TIME

1. Pull the crown out to the 2nd position.
2. Turn the crown to set hour and minute hands.
3. When the crown is pushed back to the normal position, second hand begins to run.

This watch is **NOT** suitable for water activities. Do **NOT** swim with watch.