



# ANACONDA & MOUSE



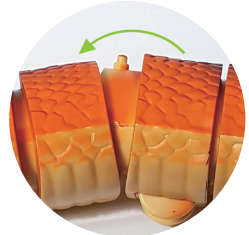
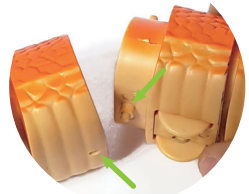
## ASSEMBLING ANGRY ANACONDA

The Angry Anaconda is packaged in two sections.

At the two open ends you will see one end with a hole and one end with a groove.

Simply align the holes and grooves and pop into place.

If you want to separate the two halves for storage, take a pointed object (such as a ballpoint pen) and press the groove in, then gently pull the two halves apart.



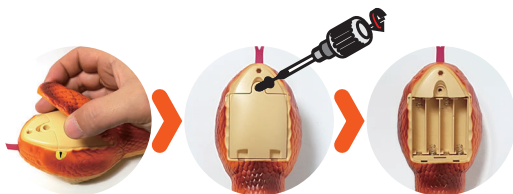
## SETTING UP THE ANGRY ANACONDA'S CONTROLLER

1. Using a Phillips screwdriver, unscrew the battery cover screw and open.
2. Install 3x AAA batteries, taking care to match the correct polarity +/-.
3. Close the cover and tighten the battery cover screw.

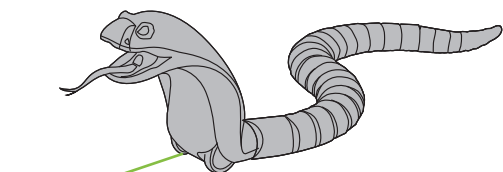


## INSTALLING THE ANGRY ANACONDA'S BATTERIES

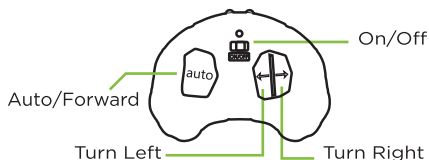
1. Using a Phillips screwdriver, unscrew the battery cover screw and open.
2. Install 4x AAA batteries, taking care to match the correct polarity +/-.
3. Close the cover and tighten the battery cover screw.



## CONTROLLING THE ANGRY ANACONDA



Power Switch



1. Set the power switch on the Angry Anaconda to On.
2. Press the Auto/Forward button on the remote control to start moving the Angry Anaconda forward.
3. Press the Left and Right keys on the remote control to change the Angry Anaconda's direction.
4. Press the Auto/Forward button again to stop the Anaconda from moving forward.

## CALIBRATING THE ANACONDA'S REMOTE TRANSMITTER

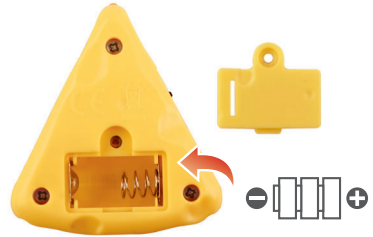
★Tip. Calibrating the transmitter is only required if the Angry Anaconda does not move in a straight line.

1. Press the Auto/Forward button to move the snake. At the same time press and hold the left and right buttons for 3 seconds to initiate calibration mode. The indicator led will stay on.
2. In calibration mode the Angry Anaconda will keep moving forward. Press the left and right buttons until the snake is moving in a straight line.
3. Once calibrated press and hold the Auto/Forward button for 3 seconds. The indicator LED will turn off.



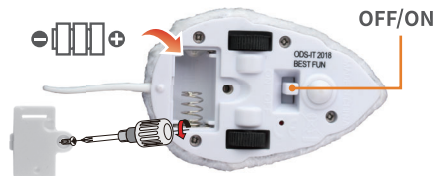
## SETTING UP MEDDLING MOUSE'S REMOTE CONTROLLER

The batteries in your remote control are pre-installed. To activate the remote simply pull the protective tab that protrudes from the battery compartment.

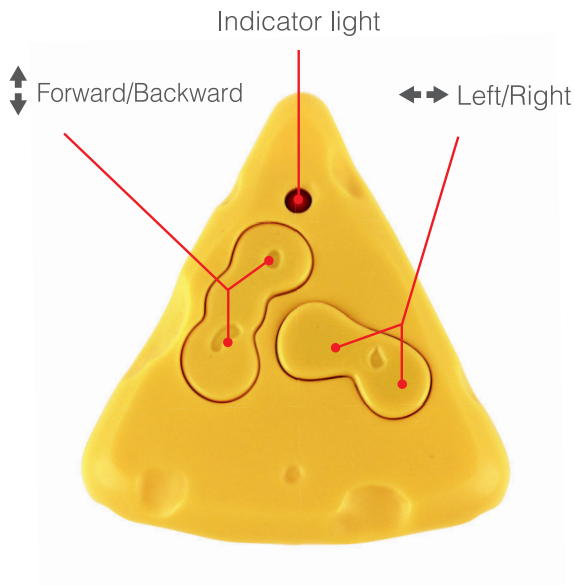


## SETTING UP THE MEDDLING MOUSE

The batteries in the Mouse are pre-installed. To activate the Mouse simply pull the protective tab that protrudes from the battery compartment, and then turn the power switch to on.



## CONTROLLING THE MEDDLING MOUSE



### Basic Operation

- Use the forward & backward buttons to move your mouse forward or backward.
- Use the left & right buttons to make the mouse spin to the left or right.

### 360 Spin Mode

- To put your mouse into a spin press and hold either the left or right button.

### Demo Mode

- To enter demo mode press and hold all 4 buttons for 4 seconds.
- To exit demo mode press and hold the forward button for 2 seconds.

## MEDDLING MOUSE MULTICHANNEL OPERATION

Use multichannel operation to operate two mice at the same time.

Simply select channel A on one of the mouse remotes, and channel B on the other mouse remote.





For Customer Service please email:  
Care@OdysseyToys.com

Please note the units model number and name in your email:  
Model no. ODY-599 • Anaconda + Mouse

[www.OdysseyToys.com](http://www.OdysseyToys.com)

## CAUTIONS & WARNINGS

- Suitable for ages 8 and up. Adult supervision is always recommended.
- This product contains small parts which are a choking hazard. Keep away from small children.
- Manufacturers and dealers disclaim all responsibility for damage caused by misuse.
- Keep hair and loose clothing away from the device when powered on.
- If device will be stored and unused for an extended period of time, please remove the batteries.
- Check the batteries regularly for potential leakage or corrosion that may occur.
- When installing the batteries carefully follow the polarity marking +/-.
- Do not mix different battery types.
- Remove exhausted or drained batteries.
- Do not exceed charging volts and amps of 5v1a.
- Do not leave charger connected or charge for more than 1hr.

FCC ID: 24XUCODY598

FCC STATEMENT: This product complies with Part 15 of the FCC Rules. Operation is subject to the following two conditions: (1) This device may not cause harmful interference and (2) this device must accept any interference receiver, including interference that may cause undesirable operation.

## CARE & MAINTENANCE

- Do not submerge the unit in any liquids.
- Keep the unit dry.
- Do not place the unit near powerful, un-shielded magnets.
- Do not expose the unit to extreme hot or cold temperatures.
- Do not hit, drop, or smash the unit with extreme force.
- Do not disassemble the unit for any reason.

NOT FOLLOWING THESE PRECAUTIONS WILL VOID YOUR WARRANTY.

MADE IN CHINA



# WARRANTY

## 60 DAY LIMITED WARRANTY

Odyssey Marketing/ Odyssey Toys warrants to the original purchaser when used in the United States only, that this product shall be free of defects in material and workmanship. This warranty applies within 60 days of the original purchase date with normal home use. This warranty does not apply for commercial use of this product. Use outside of United States is not covered by this warranty. During the warranty period, we will at our discretion, repair or replace this product without charge, as long as the product has not been abused or mishandled as by our determination. Our determination shall be final and be the consumer's sole remedy. ALL RETURNS must be accompanied by a Return Authorization Number which is issued by Odyssey Marketing's Customer Service Department.

Please contact Customer Service BEFORE returning any products or parts thereof. Once you have obtained a Return Authorization Number you will be provided a return address within the Customer Service email.

This warranty does not cover installation, adjustments in the home, nor damage due to accidents, misuse, abuse, fire, or any acts of God, incorrect line voltage, damage to other equipment caused by improper installation, unauthorized or improper modifications. This warranty gives you specific legal rights and you may also have other rights that vary from state to state.

**\*\* THIS WARRANTY IS EXPRESSLY IN LIEU OF ALL OTHER WARRANTIES, EXPRESSED OR IMPLIED INCLUDING THE WARRANTIES OF MERCHANTABILITY AND FITNESS.\*\*** ©2020 Odyssey Marketing Corp.



***Please do not return this product to the store.***

For questions or assistance on installation, parts, or operation contact Odyssey Toys at: **1-(305)-933-4480.**

Email: **Care@OdysseyToys.com**

or visit us online at: **[www.odysseytoys.com/support](http://www.odysseytoys.com/support)**