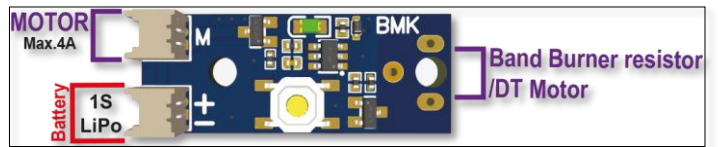


BMK E20 Motor & Band Burner Timer

Ideal standalone motor timer and dethermalizer solution for E20 class models and other small electronic flight model builds.

Simply, it's running two different timers on a single board. One for motor run time and the other for the band burner.



Features

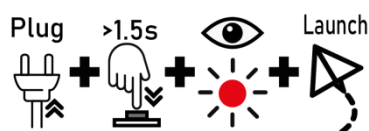
- **Weight:**1.6g
- **Dimensions:**31mm x 12mm x 5mm
- **Maximum Motor Timer Duration:**60 seconds
- **Maximum DT Timer Duration:**250 seconds (4 minutes 10 seconds)
- **Timer Steps:** 1 second
- **Timer Tolerance:** +-1% typical
- **Timer Activation Method:** Hold the onboard button for at least 2 seconds, the timer will start when the button is released.
- **Timer Cancel Method:** Click the onboard button
- **Motor Ramp:** 0.3 seconds (1.0s until 10/09/2021)
- **Operation Voltage:** 3.0 - 5.0v (compatible with 1S LiPo battery)
- **Power Consumption:** 0.06mA @ idle / 0.6mA @ countdown / 1000mA @ burning(2 seconds).
- **Maximum Output Current:** 5A continuous
- **Low Battery Warning:** <3.7v (double flashes @ idle mode)

How To Set the motor and DT timers?



1. Press and hold the button before plugging the battery.
2. Plug the battery when holding the button. (The LED will turn ON.)
3. Release the button and the (LED will turn OFF.)
4. Press and hold the button and count the LED blinks for the motor timer
*Each Blink adds 1 second to the timer. For example, 30 flashes = 30 seconds. (Max. 60 seconds for the motor)
5. Release the button when you reach the desired timer duration. (The LED will turn off and save the motor timer value)
*(If you don't want to change the DT timer value, You can remove the battery here.)
6. Press and hold the button and count the LED blinks for the DT timer
*Each Blink adds 1 second to the timer. For example, 30 flashes = 30 seconds. (Max. 250s for the DT)
7. Release the button when you reach the desired timer duration.(The LED will fast flash 3 times when saving the DT time)
8. The timer will return to normal running mode automatically. Now you can remove the battery or use your timer.

Using your timer



1. Plug the battery
2. the LED will flash once every 2 seconds.
*The double flash means the battery voltage is below 3.7v and you must recharge the battery.
3. Press and hold the button for at least 2 seconds to arm the timer before launch. (The LED will turn ON.)
4. Release the button when launching and the timer countdown will start. During the countdown, the LED will flash fast.
5. When the first countdown is complete, the timer will turn off the motor.
6. When the second countdown is complete, the timer will turn on the heater for 2 seconds.
*Click the button to cancel If you have accidentally released the button or your model has landed before the countdown is complete.