

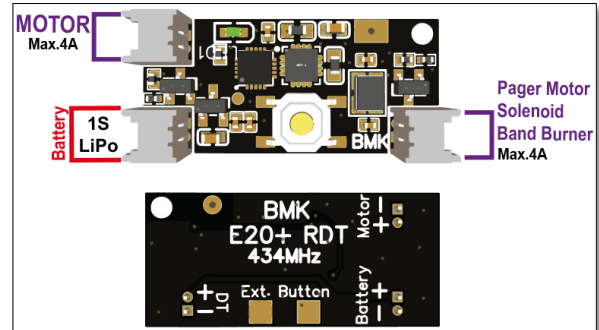
BMK E20+

Dual 4A Output Timer with Integral Remote DT

E20+ is a light-weight(1.4g) RDT/timer solution with DT and Brushed 4A motor outputs.

Battery input and output connectors are JST 1.25mm for a solderless installation, but you can also remove them for a smaller footprint if you have a fine soldering iron.

The onboard receiver is compatible with our BMK B1 transmitter which can be ordered as a bundle or sold separately. Each transmitter has its own unique code and you can connect a transmitter with an unlimited number of receivers..



Features

- Motor Timers resolution : 0.2s and 0.5s configurable
- DT Timer resolution: 10s
- Maximum Motor Time: 60s @0.2s / 20s @0.5s
- Input Voltage: 3-6v
- Consumption: ~10mA @ Receiving
- RDT Frequency: 434Mhz
- RDT Range: 2750m (in a good conditions)
- RDT Modulation: Digital Unique ID
- Low Battery Warning: <3.0v (double flashes @idle)
- Dimensions: 28mm x 12.5mm x 5mm
- Weight : 1.4g

CONFIGURING A NEW TIMER

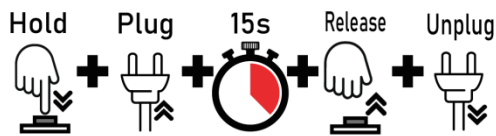
Binding with a B1 RDT Transmitter



1. Press and hold the timer button before plugging the battery.
2. Plug the battery/ESC when holding the timer button, then release the button
3. The Receiver LED will flash continuously at 5Hz.
4. Click the Transmitter DT Button.
5. The Receiver LED will turn solid RED to show the binding process completed successfully.
6. Remove battery/ESC and plug again to use.

Youtube Video: <https://www.youtube.com/watch?v=HZC7O9ZFdXo>

Changing the time increments (0.2 / 0.5 seconds) (since 29 January 2021)



1. Press and hold the button and plug the battery
 2. Keep holding and the light will blink once every half second after 10 seconds. this indicated you are now in the time increment toggle menu.
 3. release the button.
 4. The timer will toggle between 0.2 and 0.5 seconds modes. If it's on the 0.2s mode before, it will switch to the 0.5s mode. or in reverse.
 5. The LED will blink continuously to show the process completed successfully.
 6. Remove battery/ESC and plug again to use.
-

Single Page Field Manual for BMK E20+ Timers

How To Set the motor and DT timers?



1. Press and hold the timer button before plugging the battery. (like the binding process)
2. Plug the battery when holding the timer button, then release the button
3. The Receiver LED will flash continuously at 5Hz.

-- MOTOR TIMER DURATION --

4. Press and hold the button and count the LED blinks.
5. Each Blink adds 0.5(or 0.2) seconds to the timer. For example, 10 blinks = 5 seconds @ 0.5s interval.
6. Release the button when you reach the desired timer duration.
7. The LED will fast flash 3 times when saving the timer duration. Then stop blinking
8. You can continue for the DT duration setting or remove the battery if you don't want to change the DT timer duration.

-- DT TIMER DURATION --

9. Press and hold the button and count the LED blinks.
10. Each Blink adds 10 seconds to the timer. For example, 6 blink = 60 seconds.
11. Release the button when you reach the desired timer duration.
12. The LED will fast flash 3 times when saving the timer duration. Then turns to solid RED.
13. Remove battery/ESC and plug again to use.

Using Your Timer



1. Press and hold the timer button for 2 seconds. (LED: continuous light)
2. Release the button, or launch your model..
3. The motor will stop after the motor timer duration ends.
4. DT output will turn on for 2 seconds after the DT timer countdown is completed.

CANCEL or RDT

- Just single click the onboard button to return the disarmed position at any stage.
- Or overwrite with the RDT Tx button.

Notes:

- The timer will switch to FIND-ME mode (2hz short blinks) if RDT is activated. Click the onboard button to return disarmed mode before arming it again.
- Short click the timer button and the servo will turn to the start position automatically if it's on DT position from the previous flight

Copyright. BM.Karakelle

The information furnished by BM.Karakelle is believed to be accurate and reliable. However, no responsibility is assumed for inaccuracies and specifications within this document are subject to change without notice. The material contained herein is the exclusive property of BM.Karakelle and shall not be distributed, reproduced, or disclosed in whole or in part without prior written permission of BM.Karakelle.