

CIRRUS Pendant

coilandrft.com
studio@coilandrft.com
@coilandrft

COIL +
DRIFT

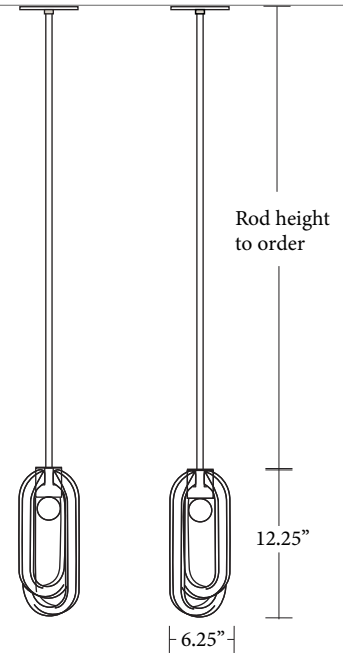
The Cirrus Pendant's two lucite rings are placed perpendicularly around a precision-crafted metal light source, each at varied lengths with one looping under the other to create a composed, jewel-like fixture.

DIMENSIONS

6 1/4" L x 6 1/4" W x (rod height to order)

LEAD TIME

Please allow 10-12 weeks



Polished Chrome



Brushed Brass

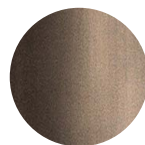
FINISH OPTIONS



Polished Brass



Brushed Brass



Aged Brass



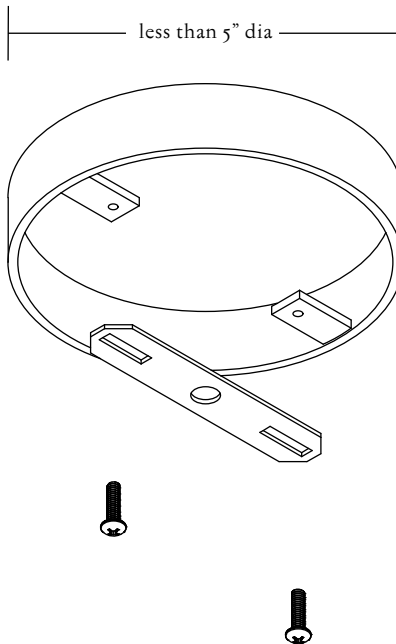
Blackened Brass



Polished Chrome

MOUNTING HARDWARE DIAGRAM

Cirrus Pendant



MOUNTING REQUIREMENTS:

The backplate on this fixture is 5" x 1/4" and is pressed metal.

The junction box you use must be under 5" in diameter.

LAMPING

E12 Screw Base

BULB INCLUDED (120V USA)

Tala Sphere 1

LAMP QUANTITY

1

VOLTAGE

110-120V~

BRIGHTNESS

220 Lumens

MAX WATTAGE

40 Watt Max

DIMMING

Universal