

# USER MANUAL

For model with Factory **Halogen** Turn Signals  
For model with Factory **LED** Turn Signals



## Turn Signal Lights

**Model.: WJ80-0646**

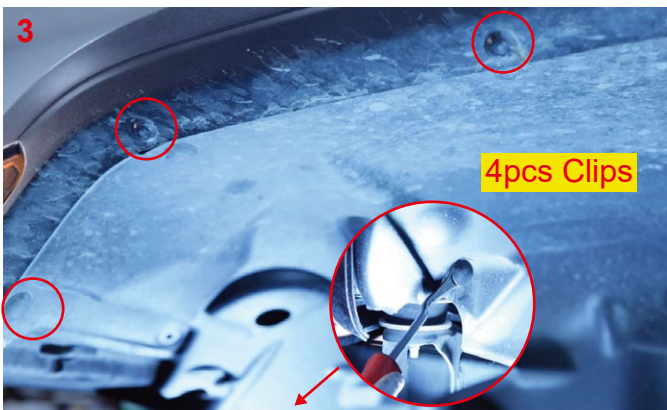
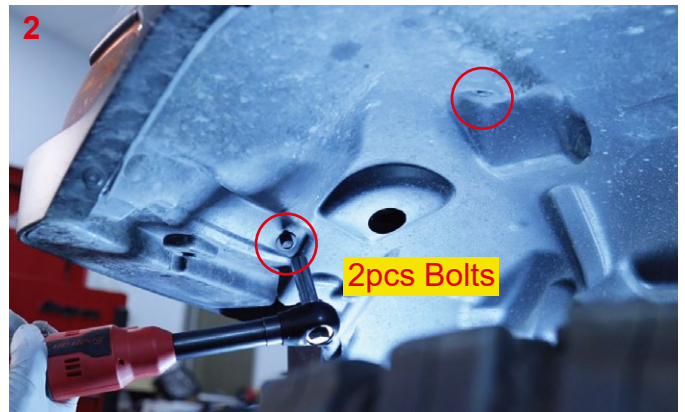
2018-2023 Jeep Wrangler JL

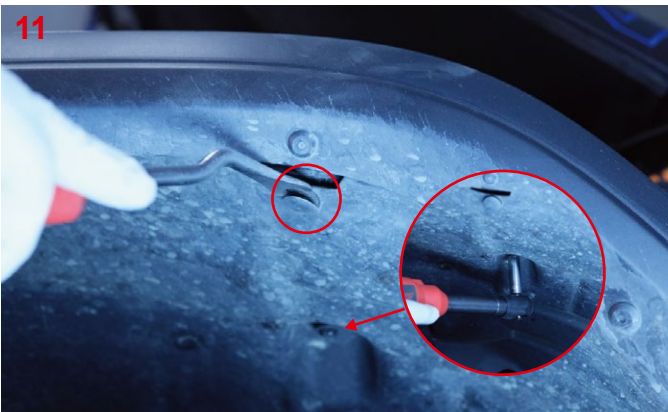
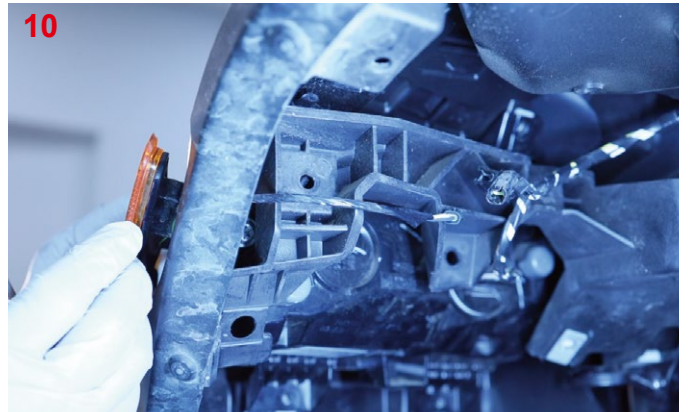
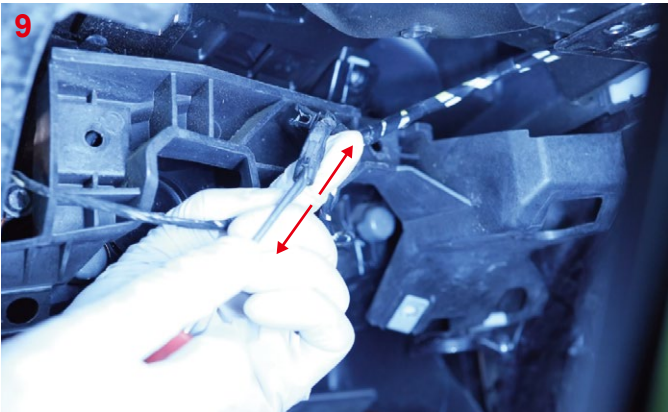
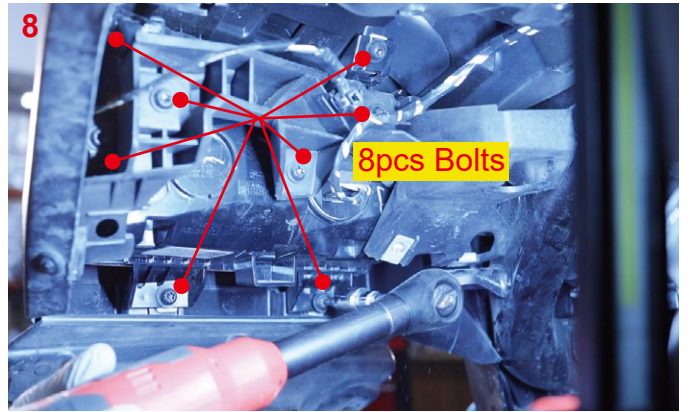
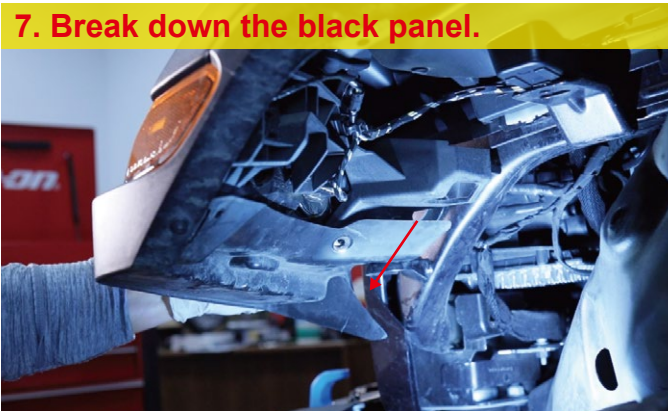
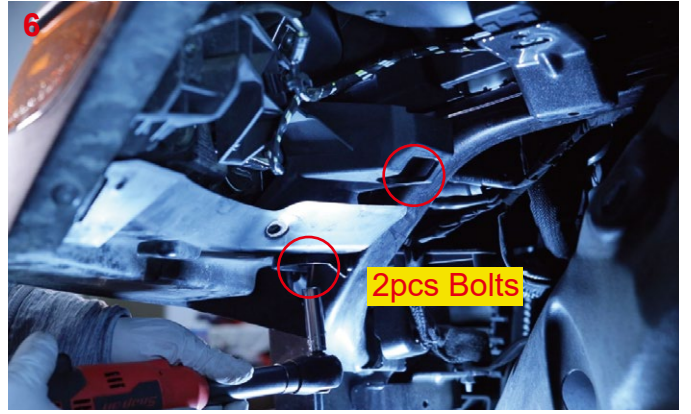
2021-2023 Jeep Wrangler 4XE Plugin

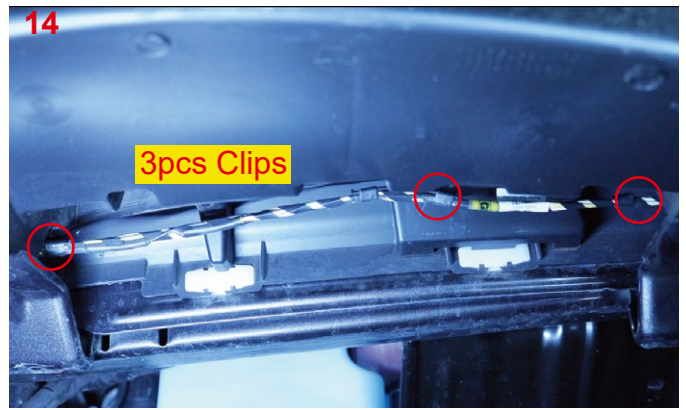
# REQUIRED TOOLS



## Installation Instructions







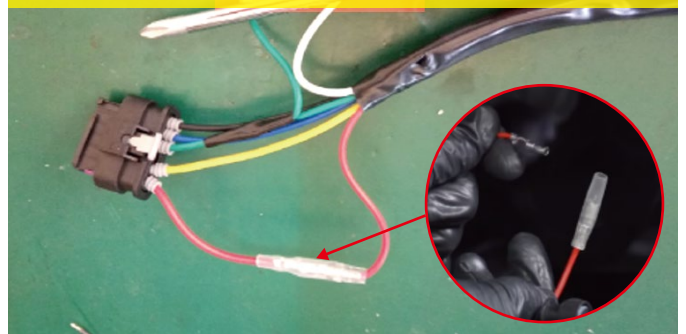
15. Take down the turn signals and side position lights.



16. **Halogen** and **LED** are differently signal Wiring.

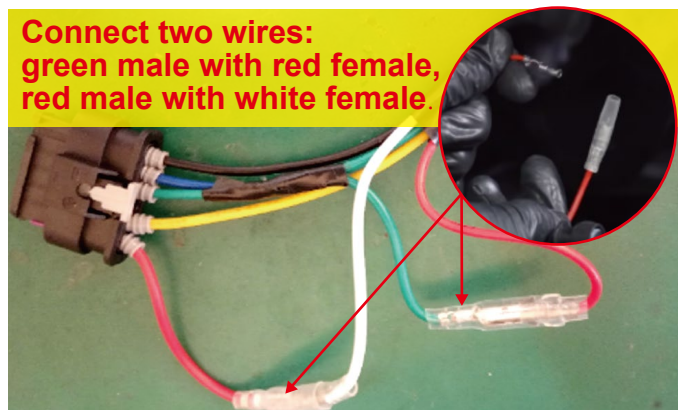
For model with Factory **Halogen** Turn Signals →

Connect the red male bullet connector with red female ones.



For model with Factory **LED** Turn Signals →

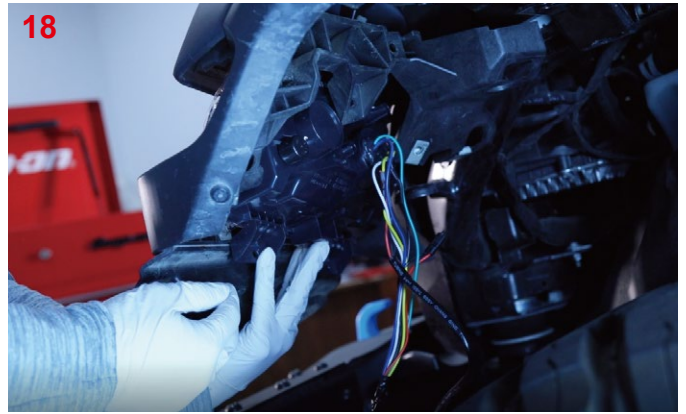
Connect two wires: green male with red female, red male with white female.



17. Install the turn signal to the car.



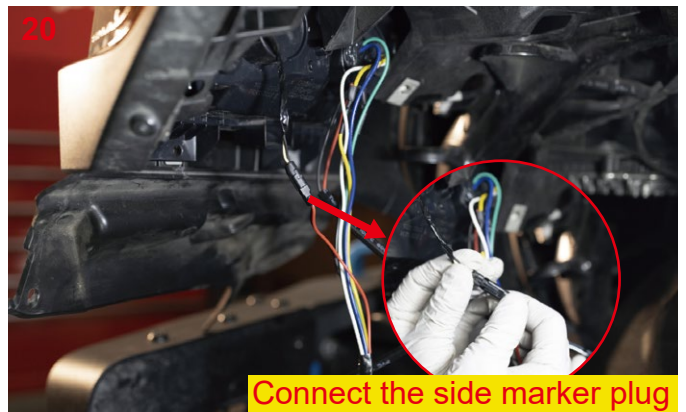
18



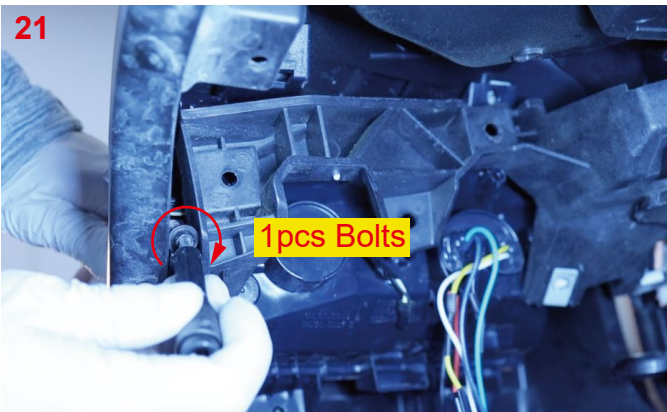
19



20



21



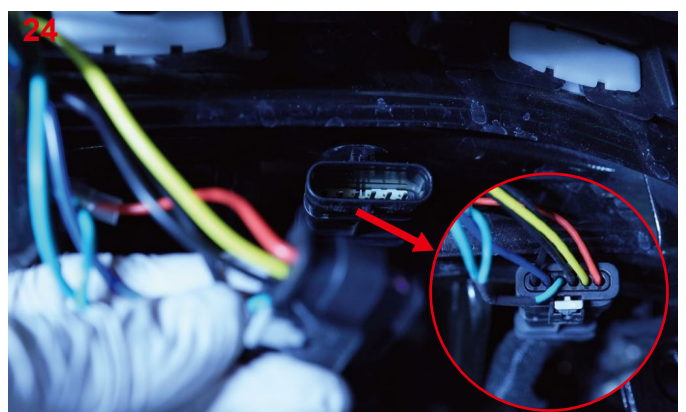
22. Install the shunt.



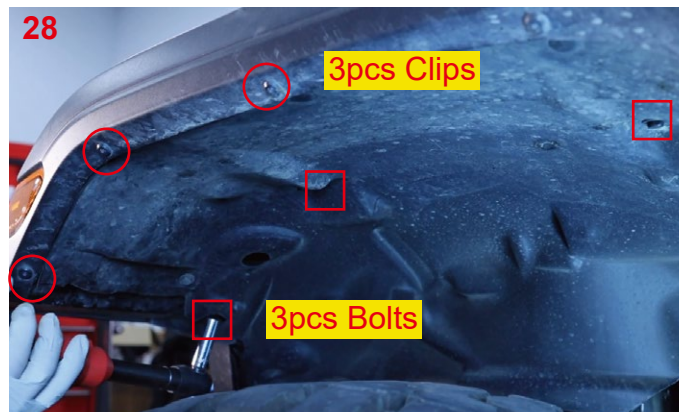
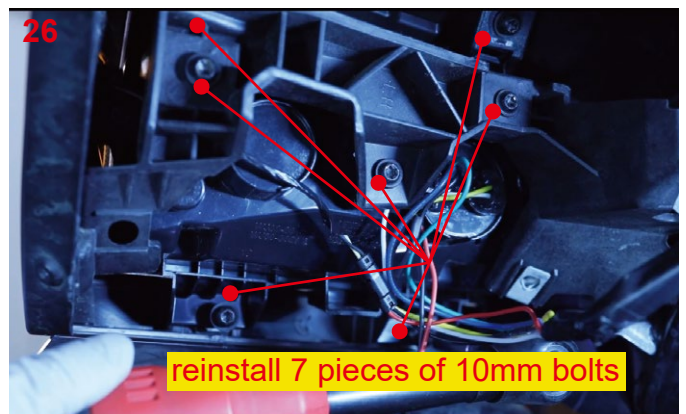
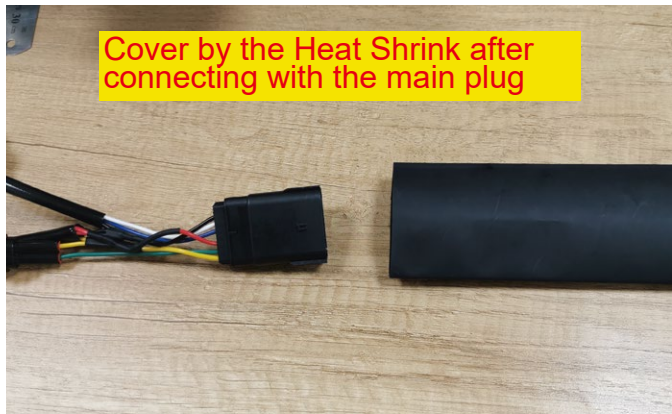
23. Feed the harness through the frame.



24



**PS: The two Heat Shrinks are for waterproof**



29. Repeat the steps 2~28 for the other side.