

# USER MANUAL

For model **w/o** Blind Spot Detection

Page01-02

For model **w/** Blind Spot Detection

Page03-06



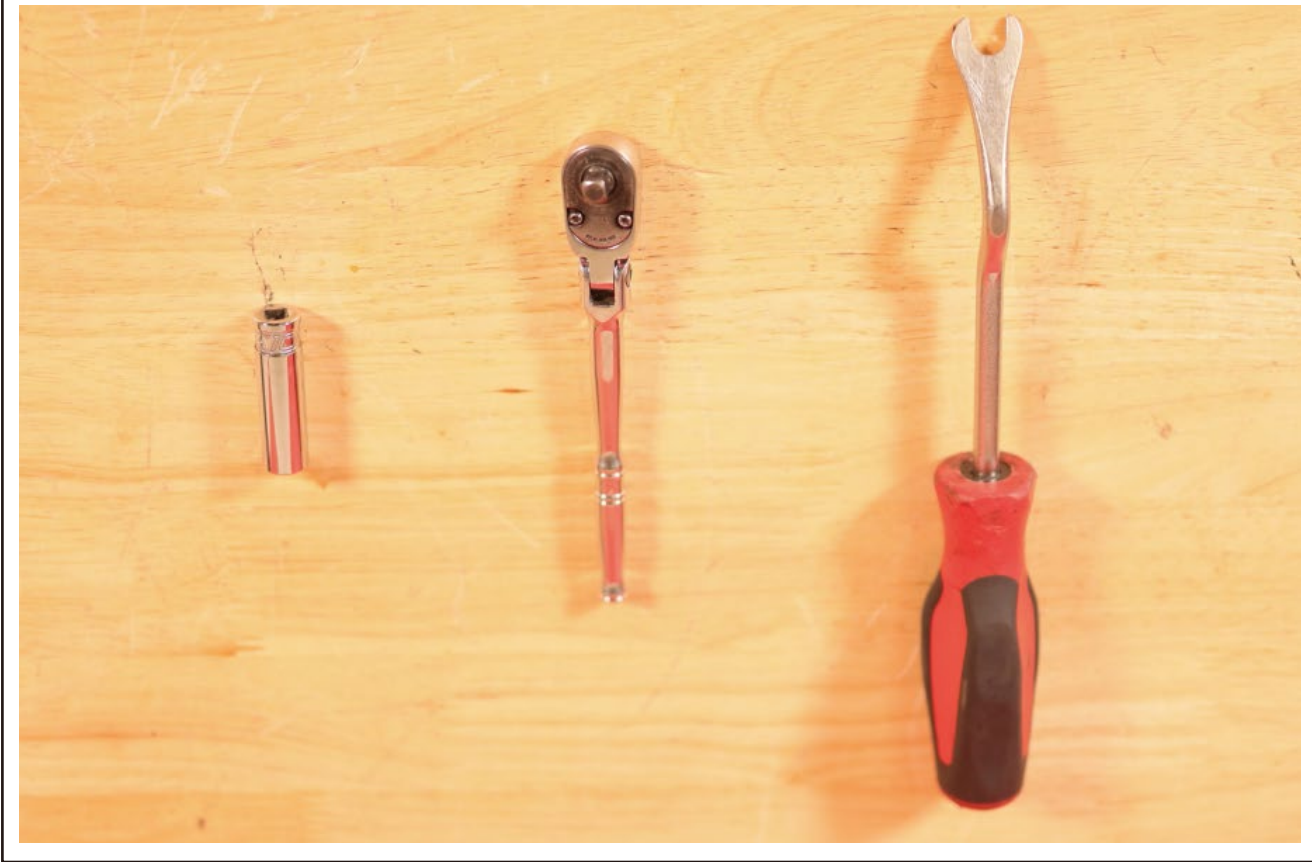
## TAIL LIGHTS

**Model.: WJ2025-0650**

2018-2023 Jeep Wrangler JL

2021-2023 Jeep Wrangler 4XE Plugin

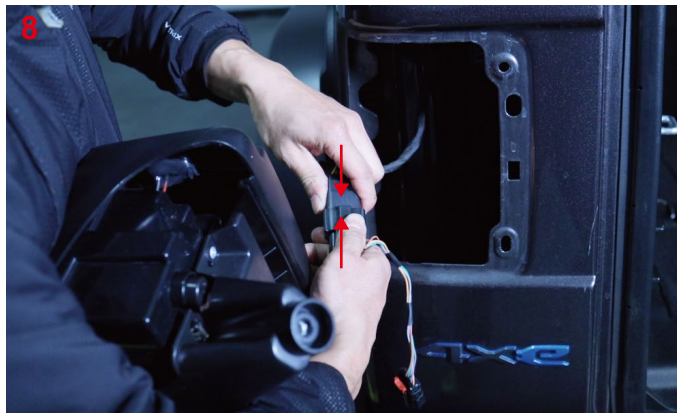
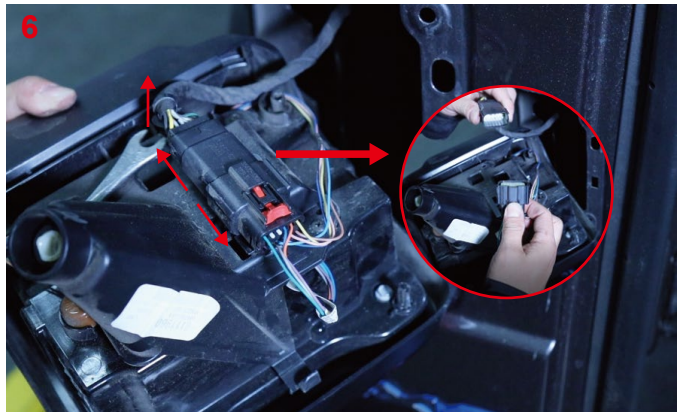
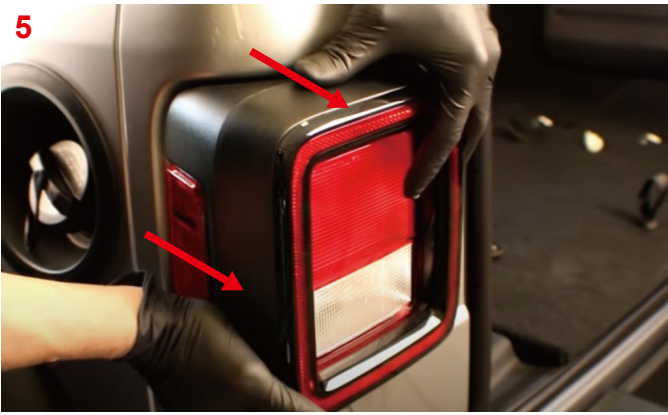
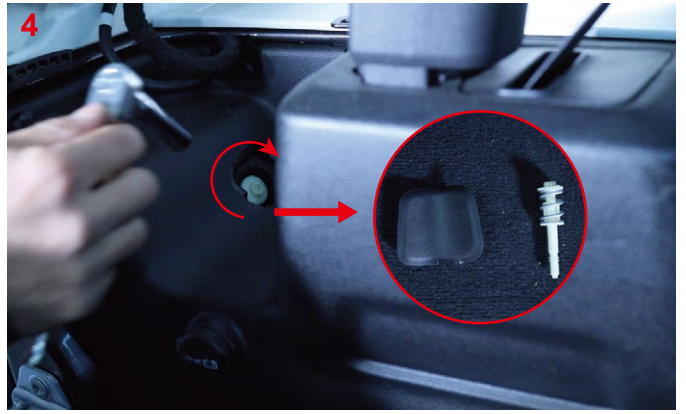
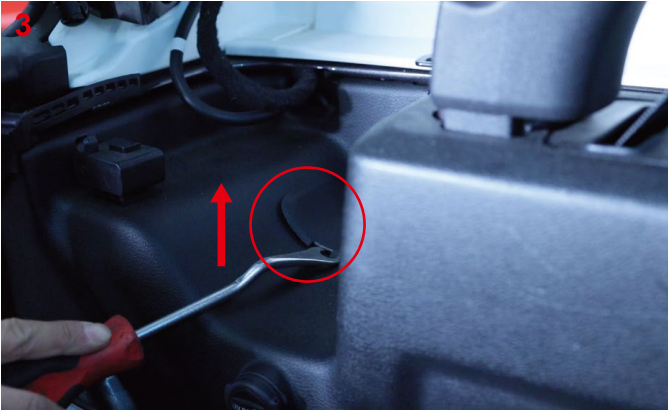
# REQUIRED TOOLS



## Installation Instructions

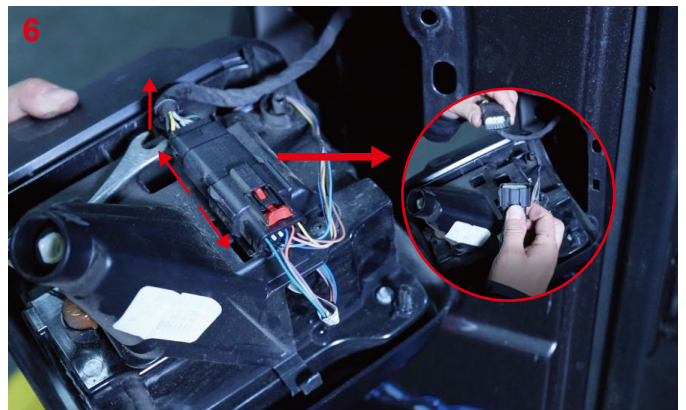
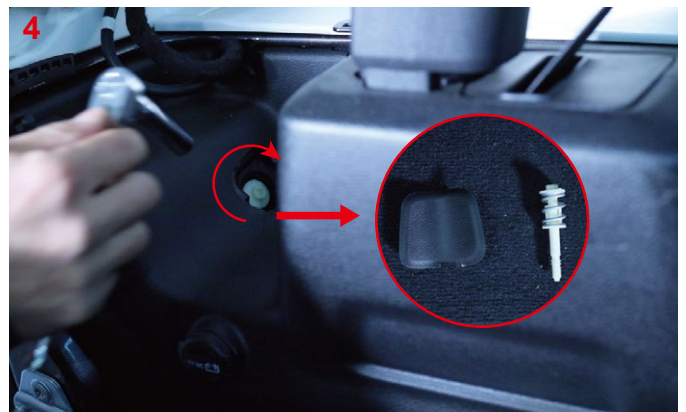
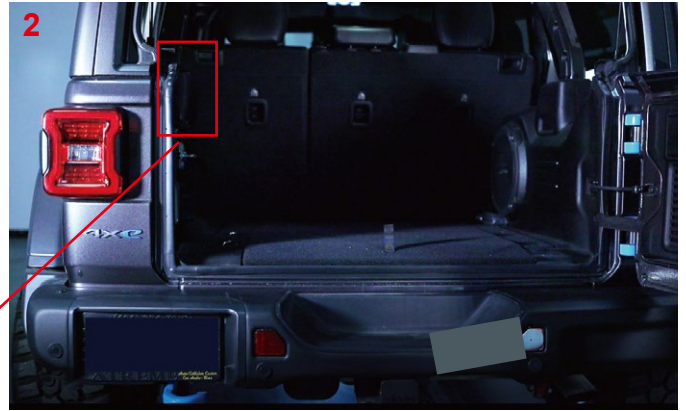
For model **w/o**  
Blind Spot Detection



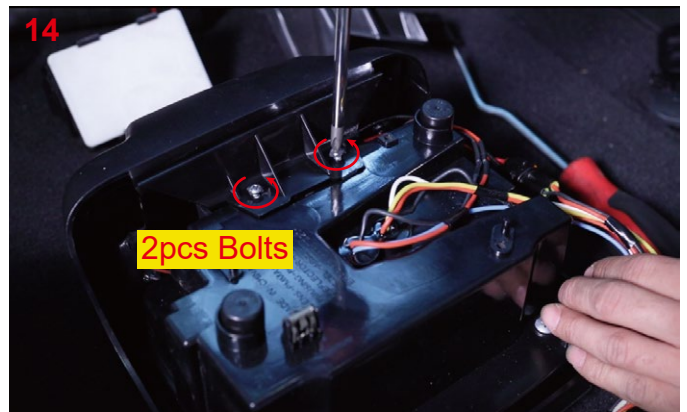
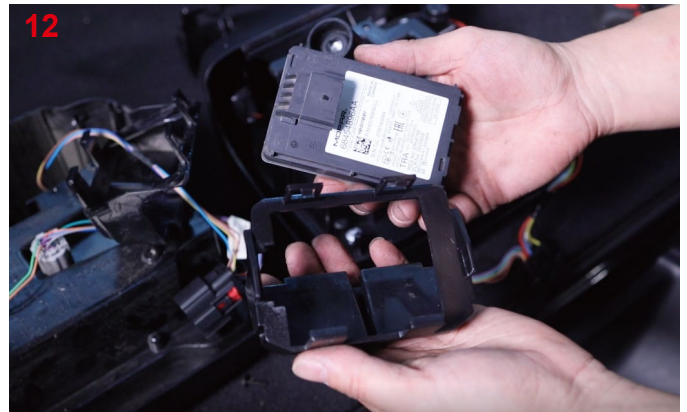
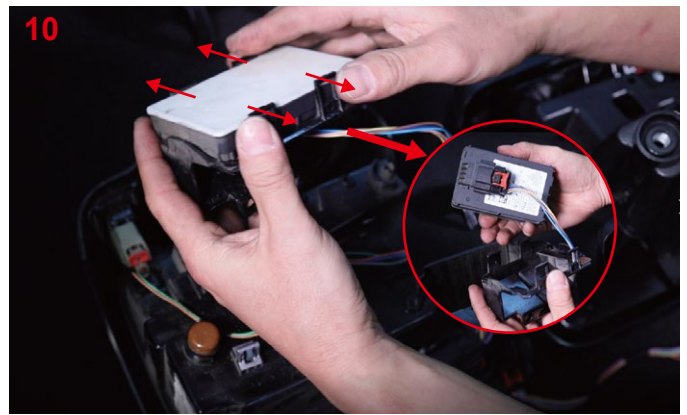
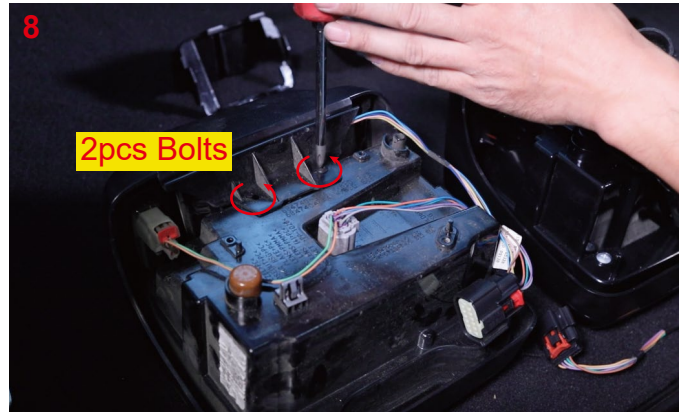
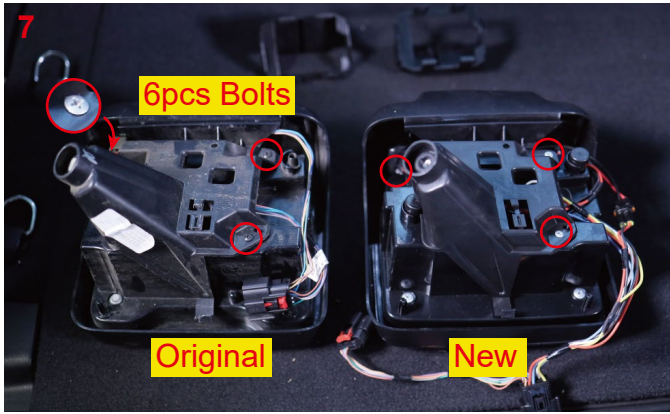


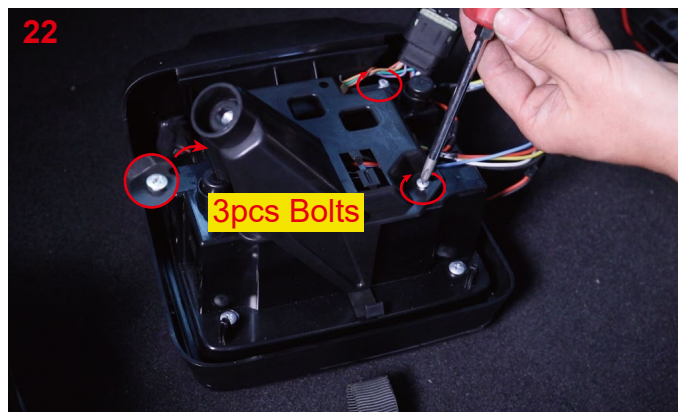
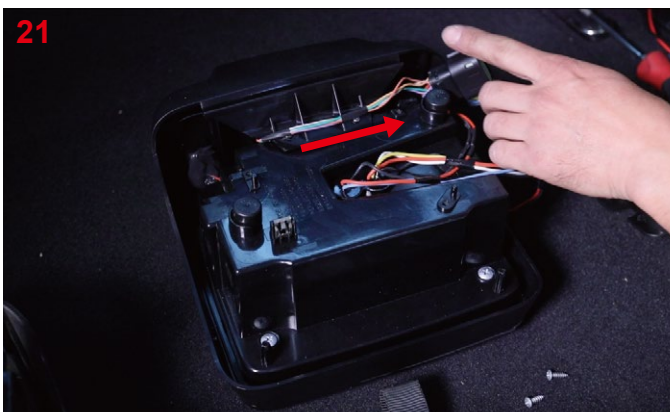
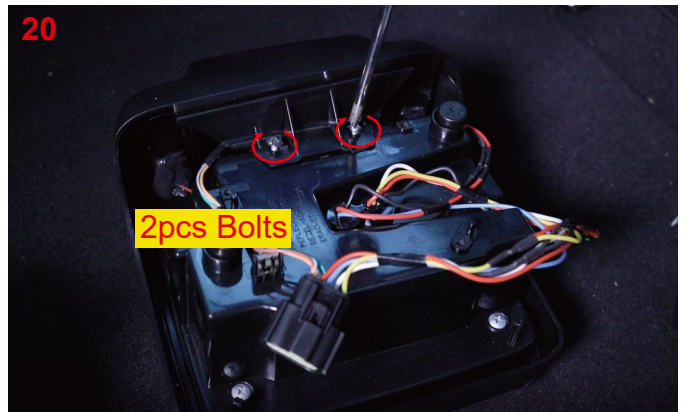
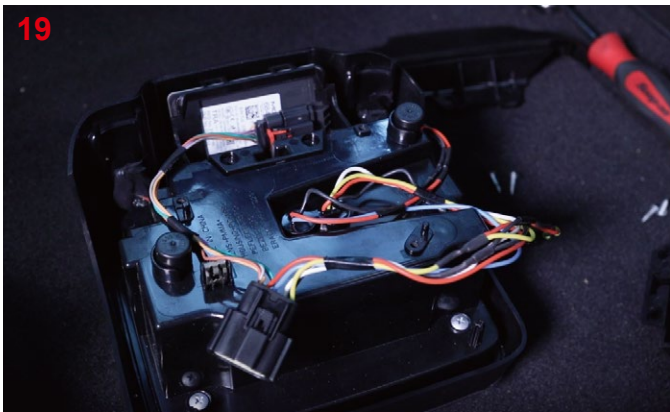
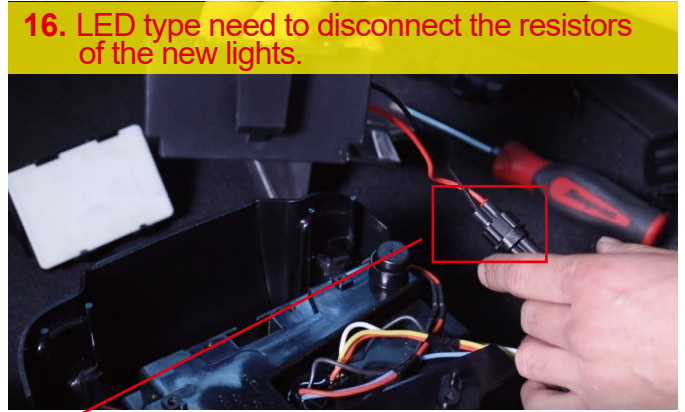
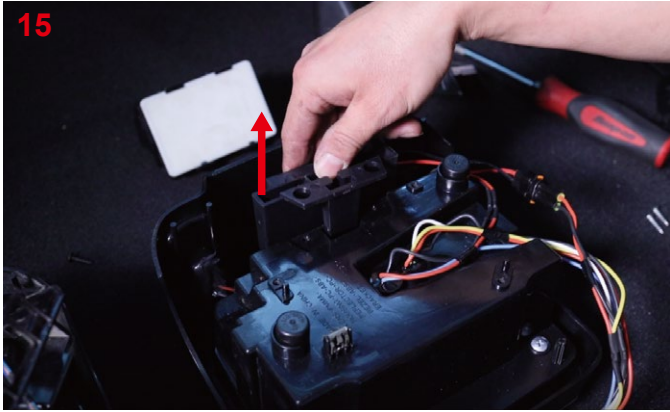
10. Repeat the steps 3~9 for the other side.

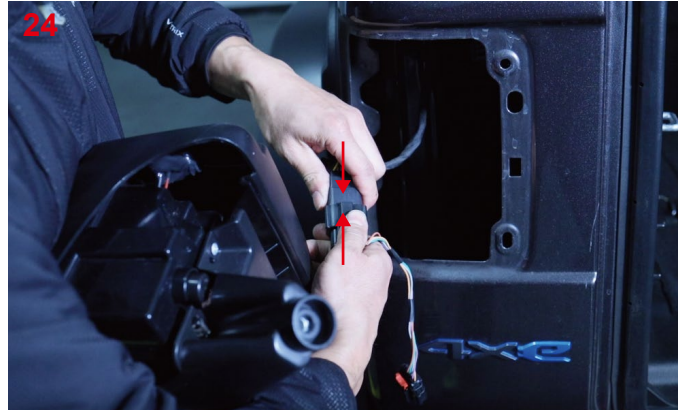
# For model **w/** Blind Spot Detection



**Notice:** Before you take out the BLIS, please mark the left and right sides of the BLIS plug. During installation, Please pay attention to the installation direction of BLIS and the new taillight. To avoid errors in the subsequent installation steps that may result in non-use.







26. Repeat the steps 3~25 for the other side.