

USER MANUAL

TAIL LIGHTS



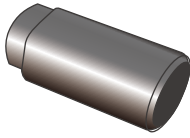
Model.: WJ2020-0702

Chevy Blazer 1992-1994
Chevy c1500 Pickup 1988-1999
Chevy c1500 Suburban 1992-1999
Chevy c2500 Pickup 1988-2000
Chevy c2500 Suburban 1992-1999
Chevy c3500 Pickup 1988-2000
Chevy k1500 Pickup 1988-1999
Chevy k1500 Suburban 1992-1999
Chevy k2500 Pickup 1988-2000
Chevy k2500 Suburban 1992-1999
Chevy k3500 Pickup 1988-2000
Chevy Tahoe 1995-2000
Gmc c1500 Pickup 1988-1999

Gmc c1500 Suburban 1992-1999
Gmc c2500 Pickup 1988-2000
Gmc c2500 Suburban 1992-1999
Gmc c3500 Pickup 1988-2000
Gmc k1500 Pickup 1988-1999
Gmc k1500 Suburban 1992-1999
Gmc k2500 Pickup 1988-2000
Gmc k2500 Suburban 1992-1999
Gmc k3500 1988-2000
Gmc k3500 Pickup 1998
Gmc Yukon 1992-1999
Cadillac Escalade 1999-2000

REQUIRED TOOLS

Socket



Ratchet



Installation Instructions

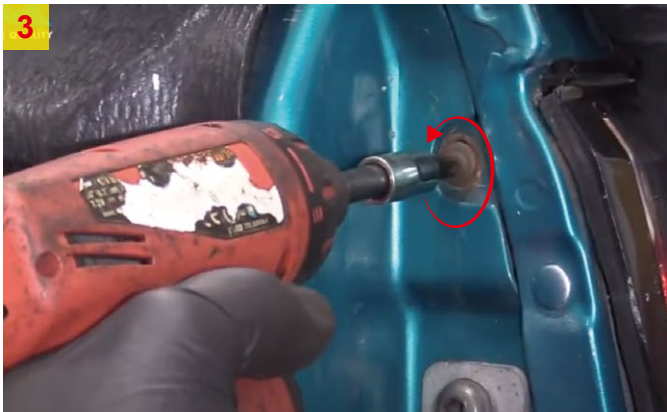
1



2. Open the tail gate and locate the two screws and remove them.



3



4. Pull the tail light off from the vehicle.



5



6. Disconnect the plugs of original.

