

# USER MANUAL

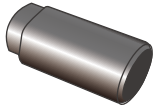
## TAIL LIGHTS



**Model.: WJ20-0720**

1997-2003 Ford F150 (Excluding 4-Door SuperCrew Cab Models)  
2004 Ford F150 Heritage (Excluding 4-Door SuperCrew Cab Models)  
1997-1999 Ford F-250 Light Duty (7 Lug Nut)  
1999-2007 Ford F-250 Super Duty  
1999-2007 Ford F-350 Super Duty  
1999-2007 Ford F-450 Super Duty  
1999-2007 Ford F-550 Super Duty  
Fits Styleside Models Only  
DO NOT Fit Flareside Models

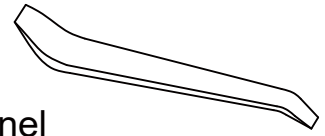
# REQUIRED TOOLS



Socket

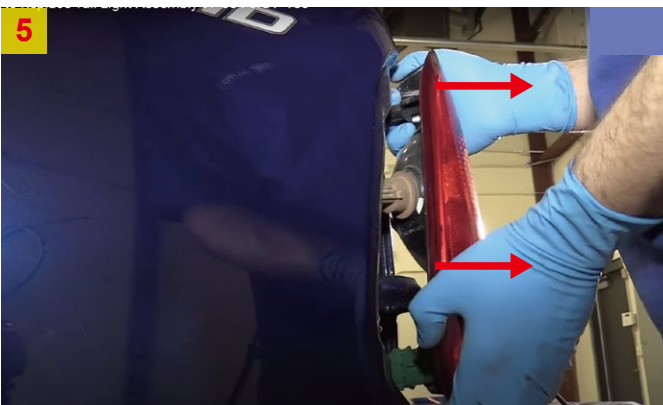
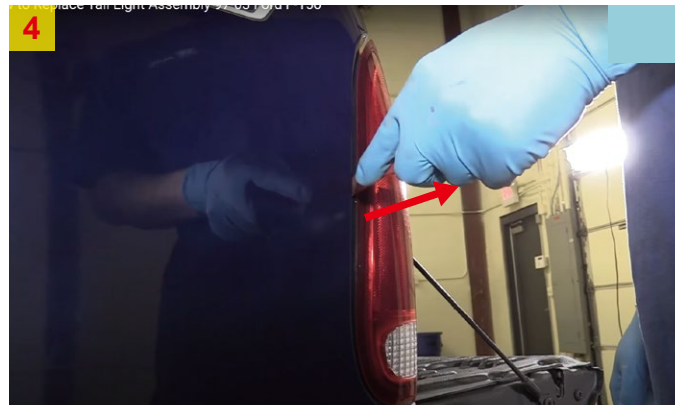
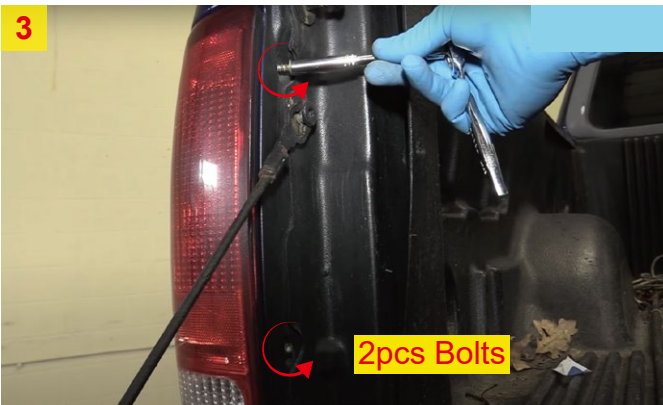


Ratchet

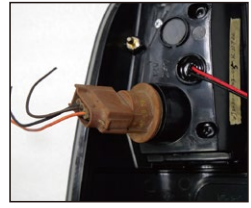
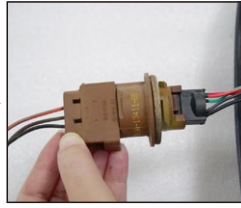
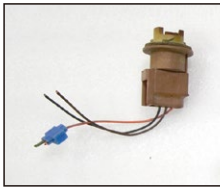


Panel Remover

## Installation Instructions



7



8. Reuse factory Back-Up bulb & socket.



9. Place the resistor in a safe location in the housing, and connect the resistor.



10



11. Repeat the steps 3~10 for the other side.

