

USER MANUAL



TAIL LIGHTS

Model.: WJ20-0666

2008-2013 Chevy Silverado 1500

2008-2014 Chevy Silverado 2500 HD 3500 HD

Fits Models with 3047 Reverse Light Bulb ONLY

NOT Compatible with 2007 Classic Models;

NOT Compatible with 2010-2011 Silverado with 921 Reverse Backup Bulbs;

Not fit for 10-13 Hybrid Models(with 4 sockets)

REQUIRED TOOLS

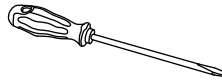
Socket



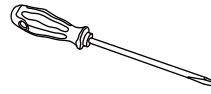
Ratchet



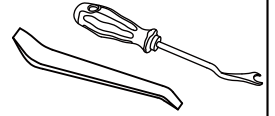
Flathead
Screwdriver



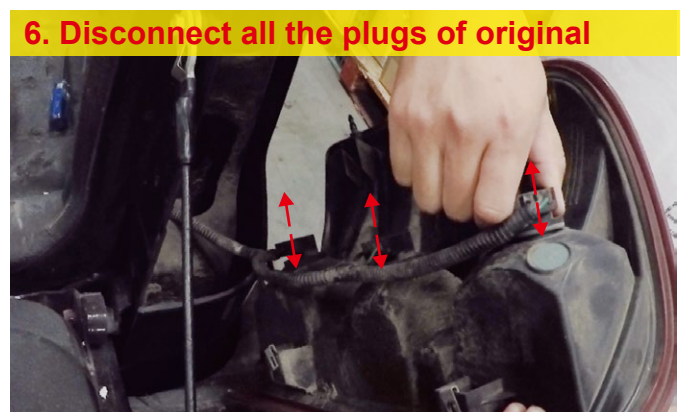
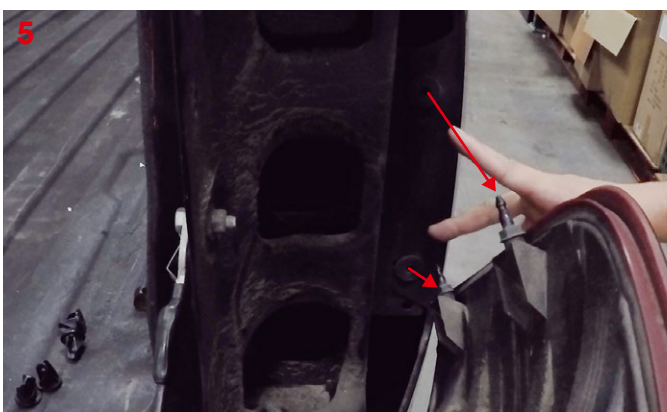
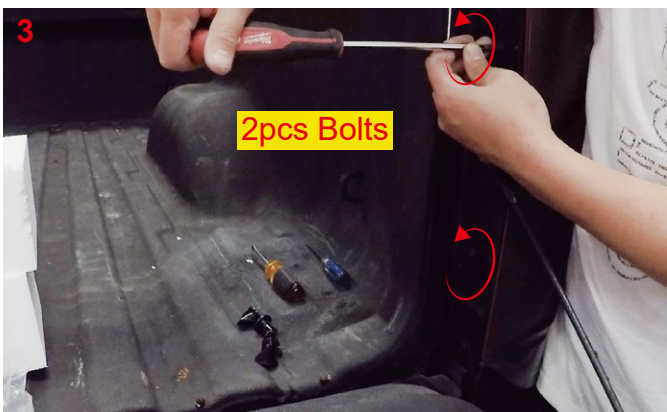
Phillips
Screwdriver

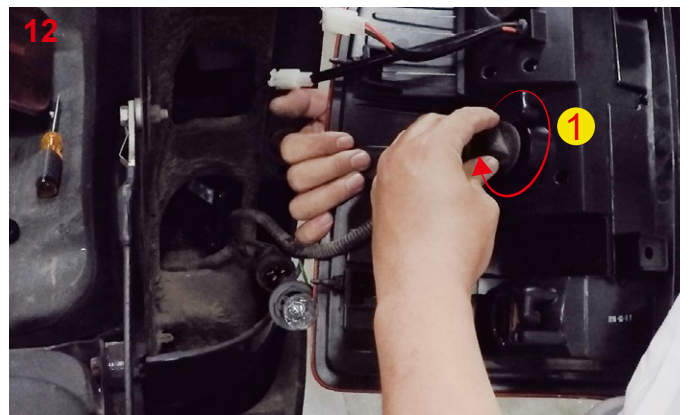
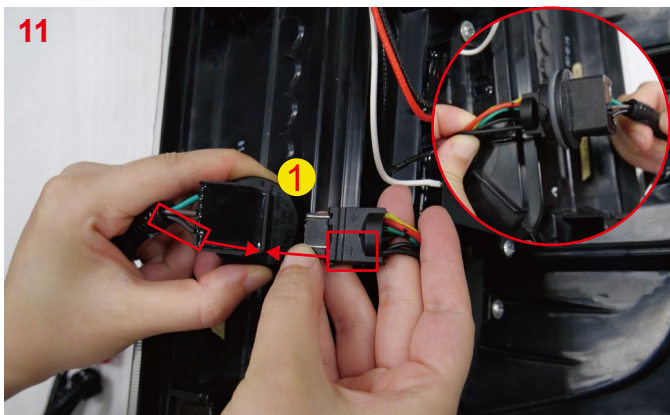
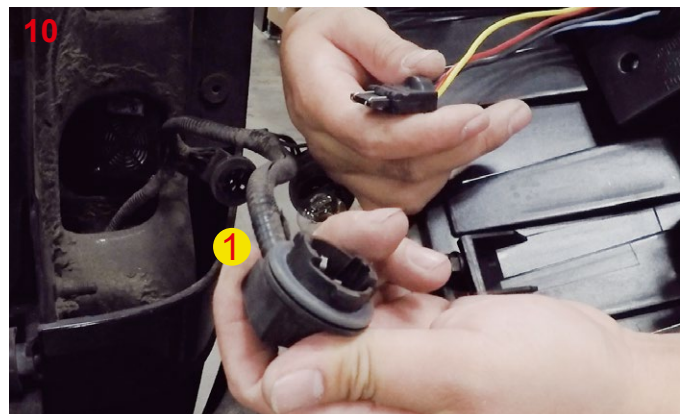
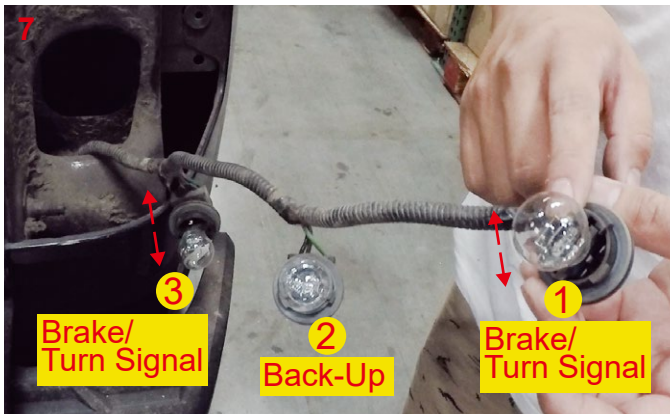


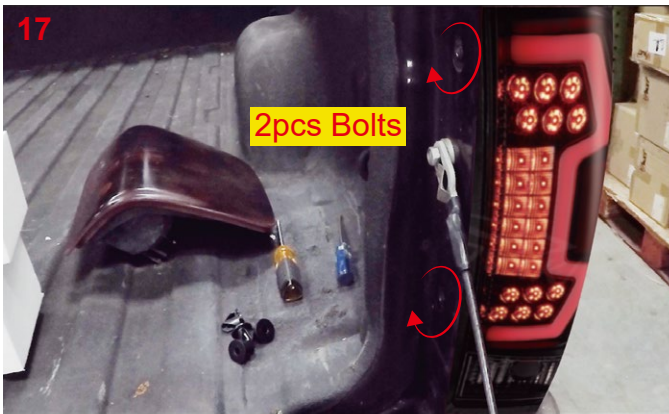
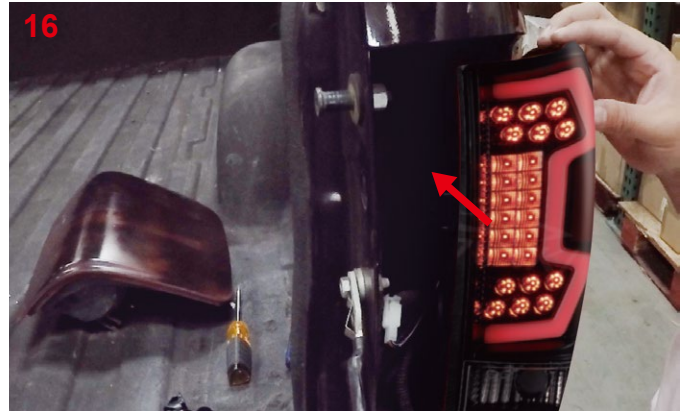
Panel
Remover



Installation Instructions







19.Repeat the steps 3~18 for the other side.
20.Reinstall the original removed parts and bolt.