

# USER MANUAL



## TAIL LIGHTS

**Model.: WJ20-0067**

2008-2013 Chevy Silverado 1500

2008-2014 Chevy Silverado 2500 HD 3500 HD

Fits Models with 3047 Reverse Light Bulb ONLY

NOT Compatible with 2007 Classic Models;

NOT Compatible with 2010-2011 Silverado with 921 Reverse Backup Bulbs;

Not fit for 10-13 Hybrid Models(with 4 sockets)

# REQUIRED TOOLS

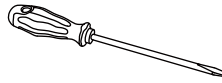
Socket



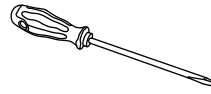
Ratchet



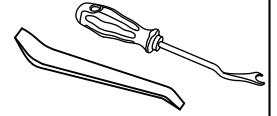
Flathead  
Screwdriver



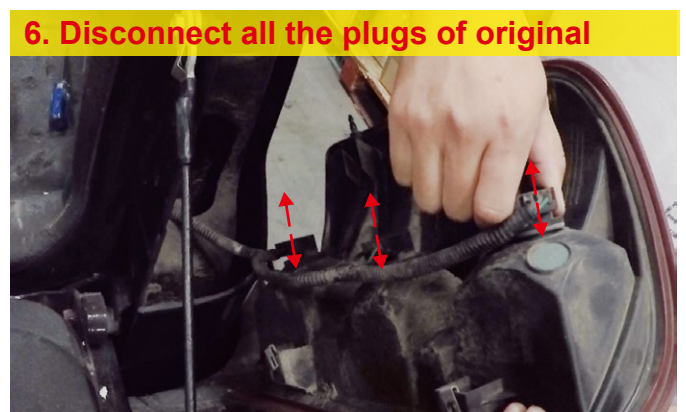
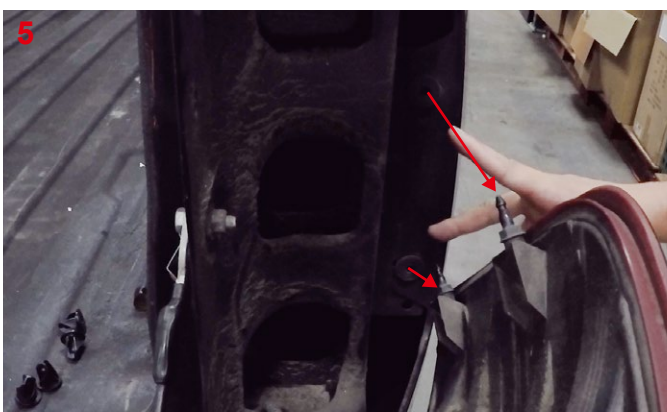
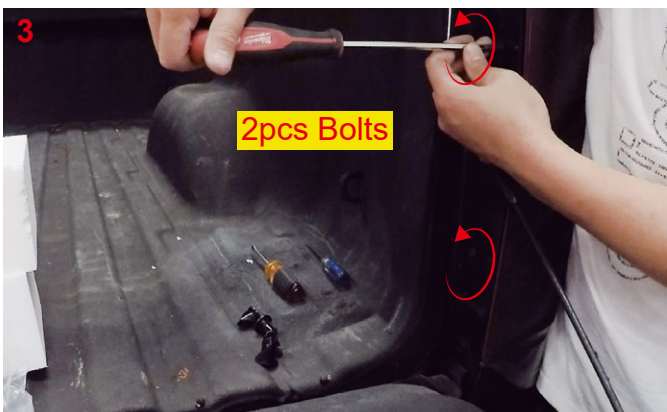
Phillips  
Screwdriver

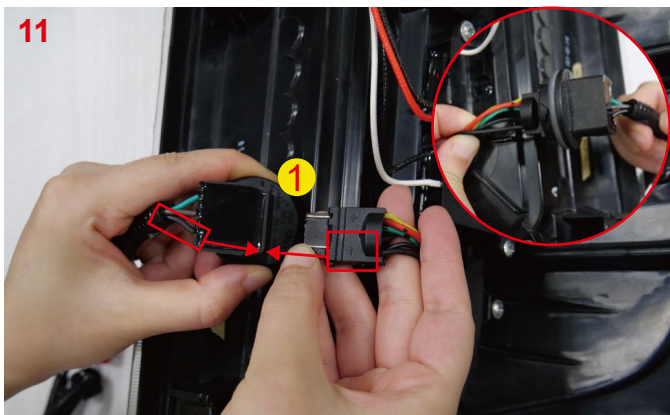
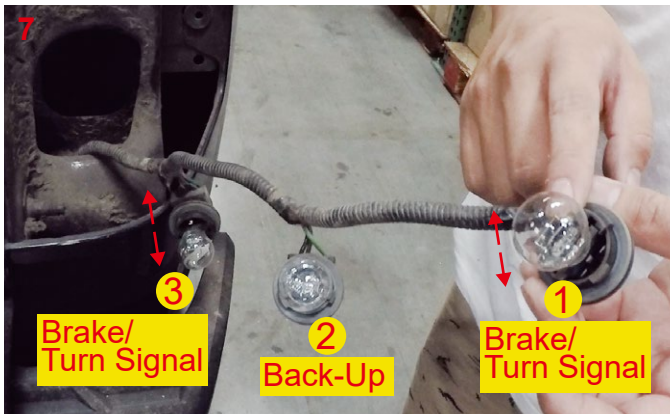


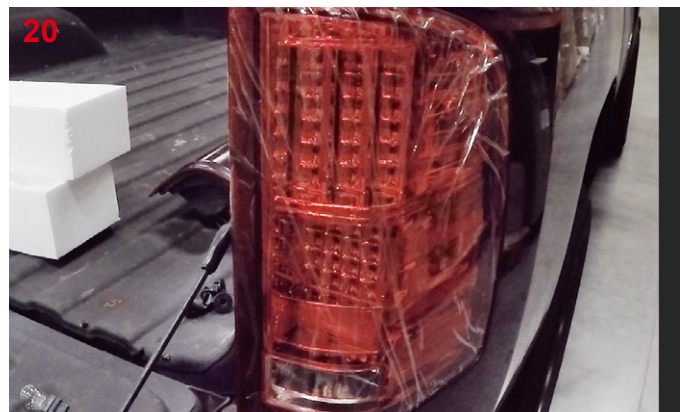
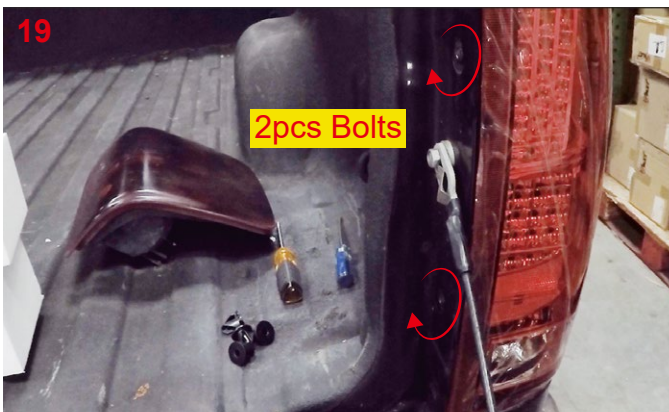
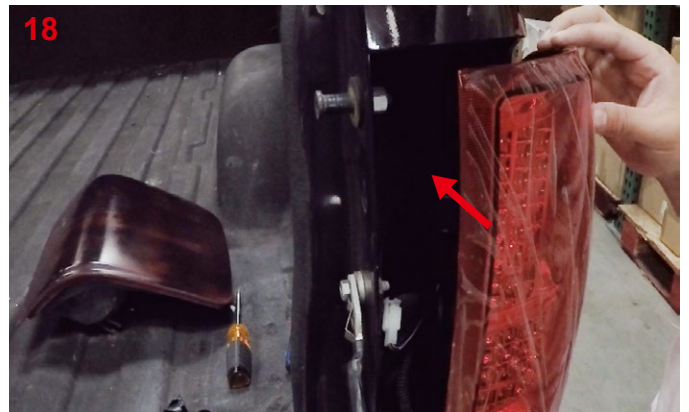
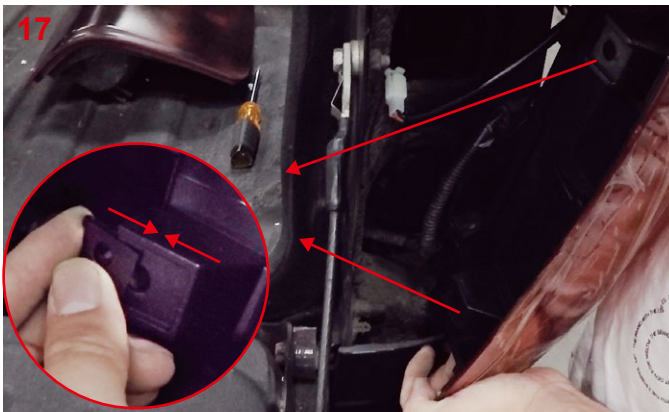
Panel  
Remover



## Installation Instructions







21.Repeat the steps 3~20 for the other side.  
22.Reinstall the original removed parts and bolt.