

USER MANUAL



HEADLIGHTS

WJ1020-0747

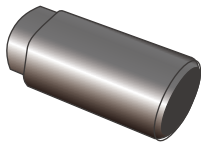
1994-2001 Dodge Ram 1500 Pickup

1994-2002 Dodge Ram 2500/3500 Pickup

1995-2002 Dodge Ram 4000 Pickup

REQUIRED TOOLS

Socket

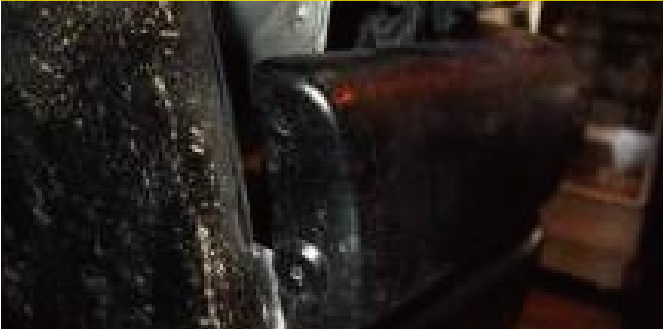


Ratchet



Installation Instructions

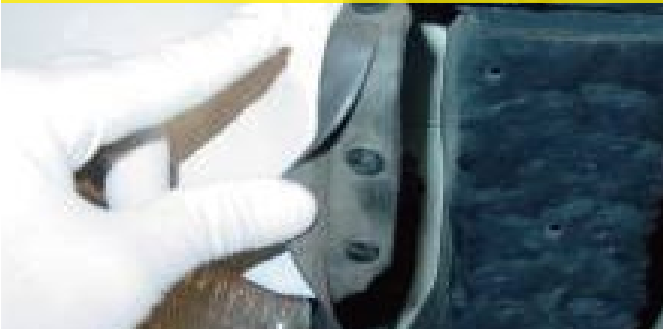
1. Use the flat head screwdriver to remove the pin holding in the place bumper.



2. Remove the plastic bumper guard with the flat head screwdriver for the clips inside the metal bumper.



3. Remove the three push pins holding the dust cover from the frame.



4. Remove the top 10mm screw holding in the headlight.



5. Remove the second 10mm screw under the corner light.



6. Remove the third screw from the bottom headlight.



7. Twist off the corner light from the headlight.



8. Unplug the headlight bulb from the housing.



9. Remove the headlight from the car.



10. Put in the new light and plug in the headlight harness.



11. Plug in the corner light.



12. wiring in the drl to the storage battery.



13. Bolt on the headlight and check all functions before driving.