

# TAILGATE LADDER

————— User Manual —————

Pickup Truck Universal Fit



Model:	NJ101
Material:	Q235A
Product Dimensions:	14.1 x 2 x 49.2 inch
Package Dimensions:	27.2 x 16.9 x 3.9 inch
Product Weight:	14.44 lbs

---

※ Thank you for purchasing the TAILGATE LADDER. Please read this manual carefully and keep it properly if you need to refer to it afterward. If you need any support or assistance, please contact us with your product model number and order number, and our support team will help you solve problems.

**⚠ WARNING**






※ This product is designed primarily to enhance the appearance of the vehicle. Do not rely in any way on the components of this product to protect against injury or death in the event of an accident. To reduce the risk of serious injury or property damage, please read all safety messages and understand all instructions and procedure notices before attempting to install or use this product.

**⚠ CAUTION**

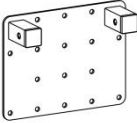


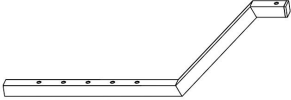
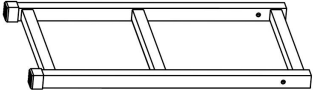

※ Properly torque and recheck fasteners and security of step tread after 250 miles and inspect frequently. Do not use if damaged.


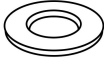
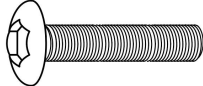



※ Rear Bumper is heavy, and we strongly suggest the assistance of an able-bodied assistant during the lifting and installation of your Rear Bumper.

# REQUIRED TOOLS

<p>Cordless Screwdriver</p> 	<p>Safety Glasses</p> 	<p>Wrench</p> 	<p>Allen Wrench</p> 	<p>Ratchet</p> 
---	---	---	--	--

## Parts Information

Parts NO.	Parts Name	Size	Line Graph	Qty	Color
/	Bottom Plate	/		1	Black
/	Connector	/		2	Black
/	Telescopic Rod 1	/		1	Black
/	Telescopic Rod 2	/		1	Black
/	Ladder	/		1	Black
/	D-Clip	Φ8x45		2	Galvanized

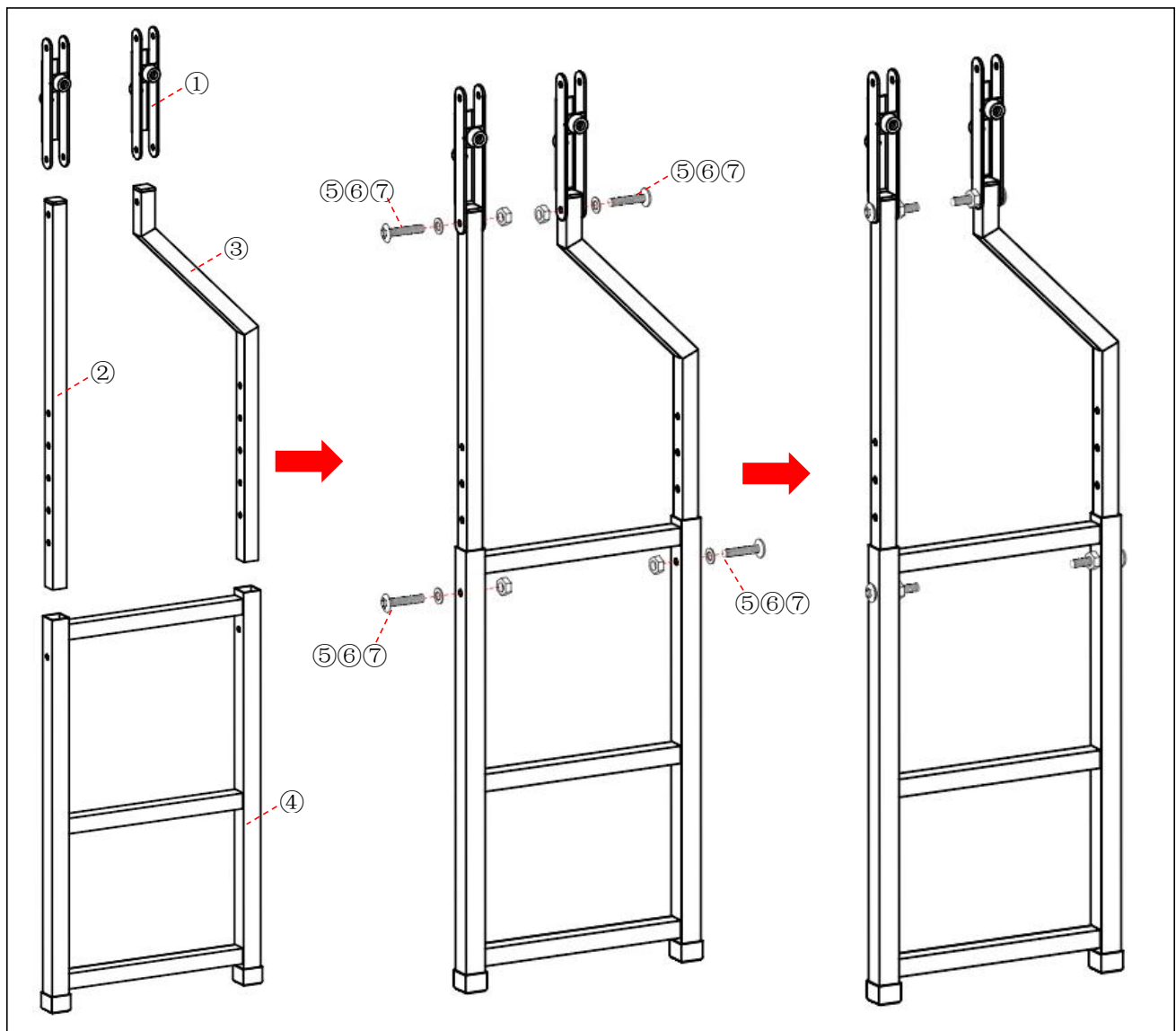
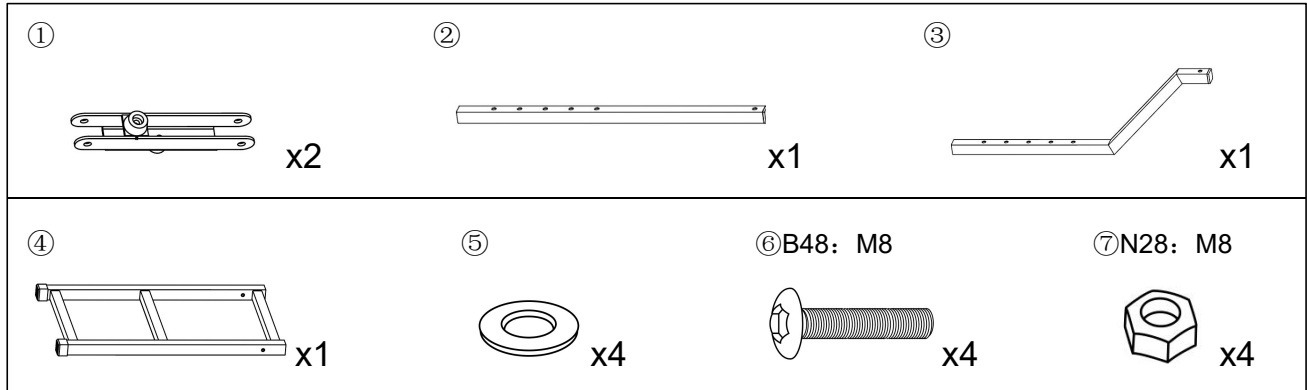
Parts NO.	Parts Name	Size	Line Graph	Qty	Color
/	Buckle Strap	30x800		1	Black
/	Flat Washer	8x16x0.5		10	Nylon
B48	Head Allen Bolt	M8x45		6	Galvanized
N28	Hex Lock Nut	M8		6	Galvanized
S11	Hex Washer Screws	M6.3x19		8	Galvanized
S12	Hex Washer Screws	M6.3x38		8	Galvanized

**\*Note: spare parts such as B48、 N28、 S11、 S12 are provided with 2PCS each (included in the number of parts details).**

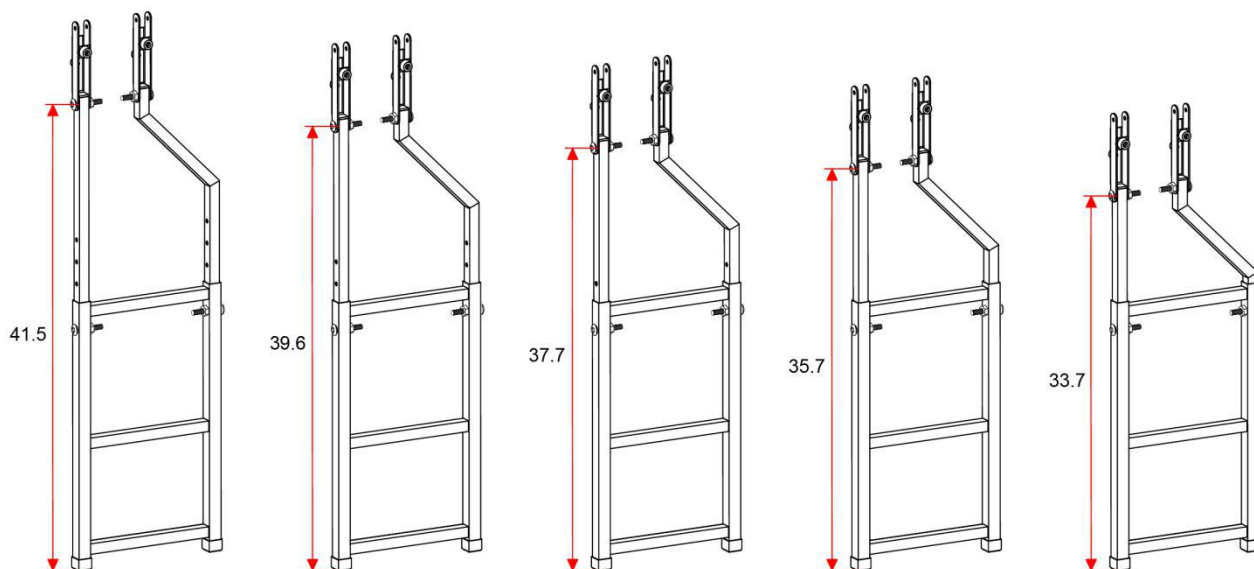
# Installation Instructions

**Step 1:** Open the carton and take out the parts. Check whether the number of components is complete.

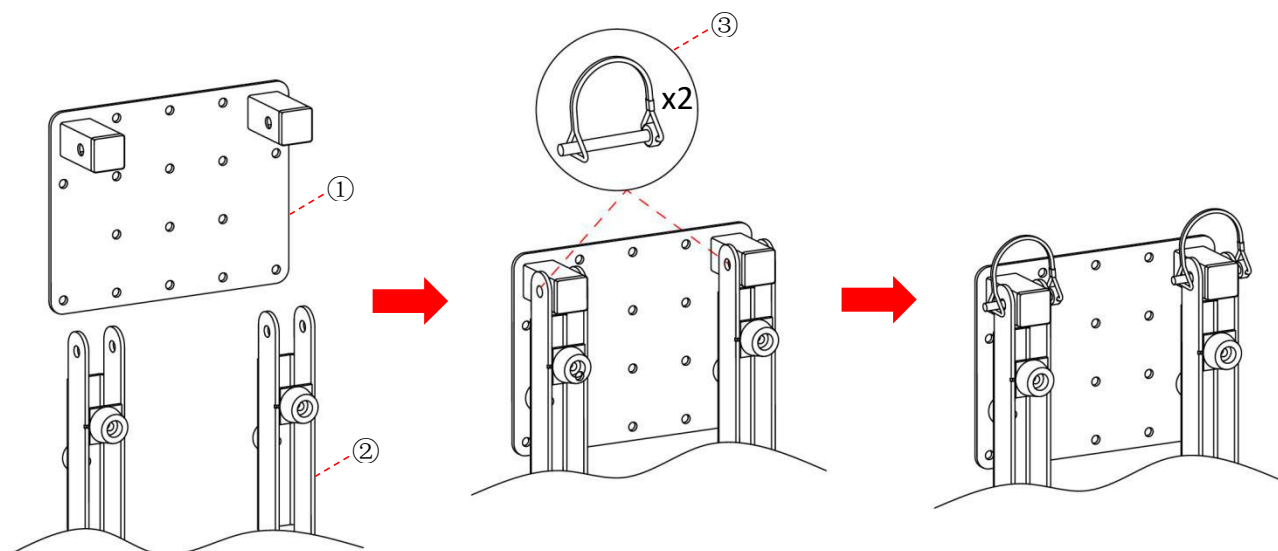
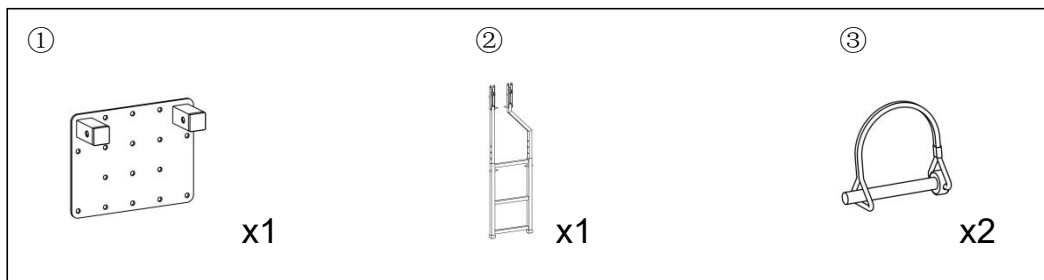
**Step 2:** Splice the tailgate ladder.



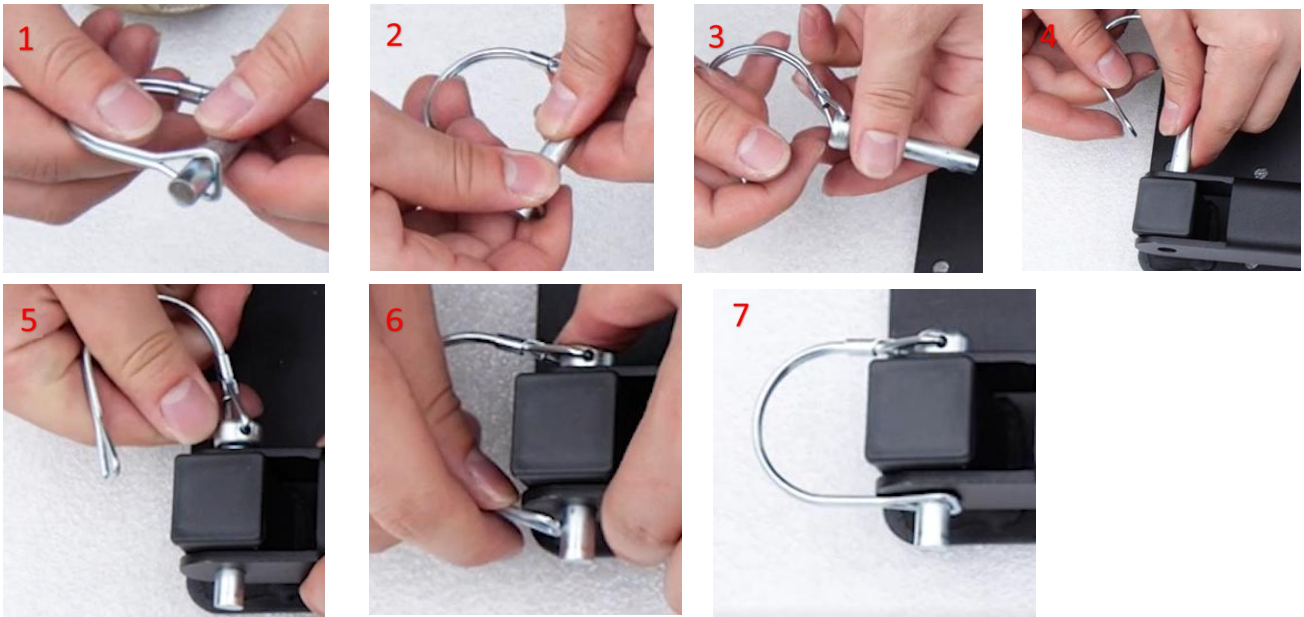
Tips: You can adjust the ladder to your needs.



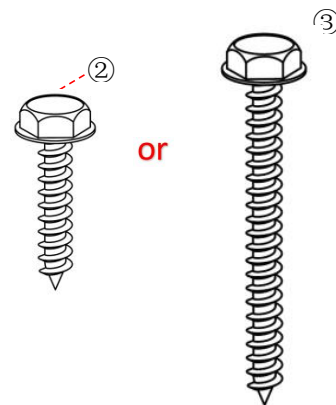
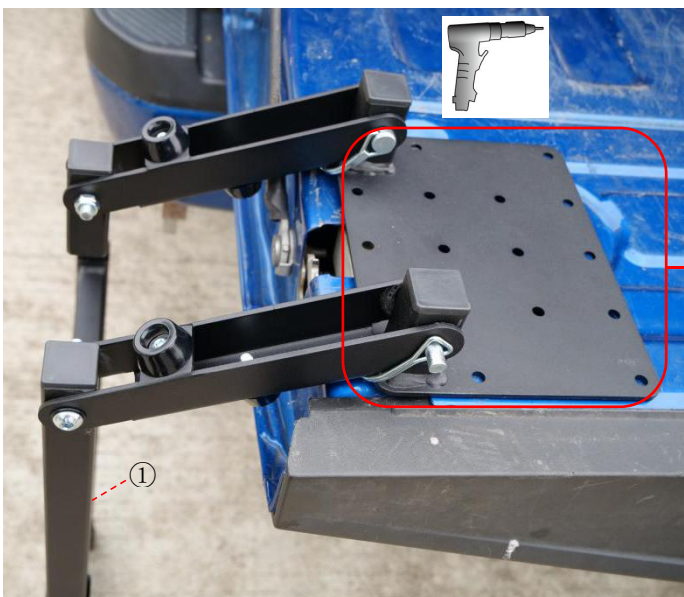
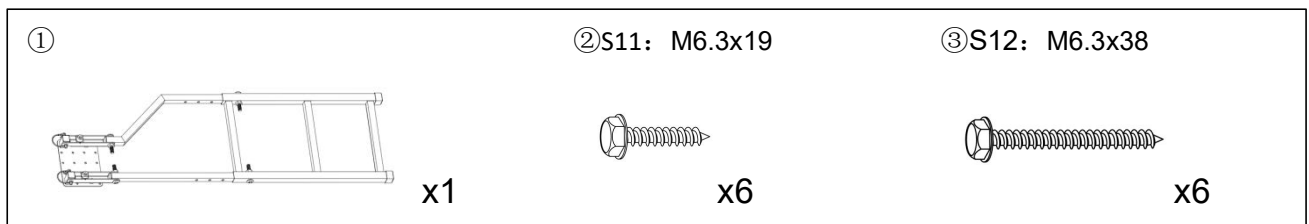
**Step 3: Splice the tailgate ladder and bottom plate.**



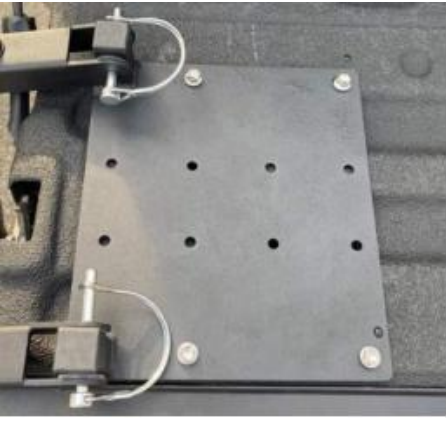
D-clip installation steps:



**Step 4:** Install the tailgate ladder.






**Note:** Only half of the holes in the bottom plate will be used. Based on model of truck/tailgate the crews hole locations will vary



or



**Step 5: Install the buckle strap.**

①	②S11: M6.3x19	③S12: M6.3x38
 x1	 x2	 x2

