

USER MANUAL



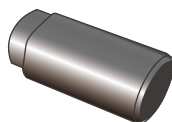
TAIL LIGHTS

GWJ2020-0015

2009-2014 Ford F-150 Styleside Model Only

REQUIRED TOOLS

Socket



Ratchet

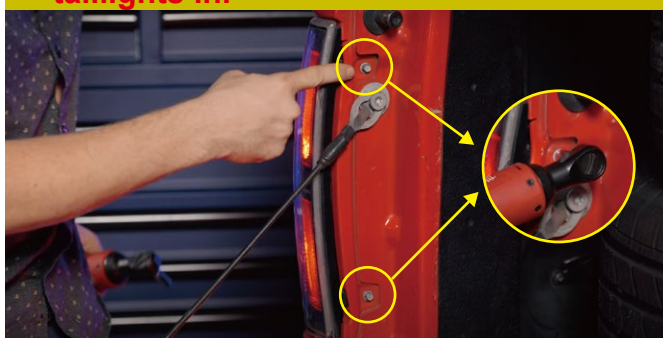


Installation Instructions

1



2. Remove the two 8mm bolts holding the taillights in.



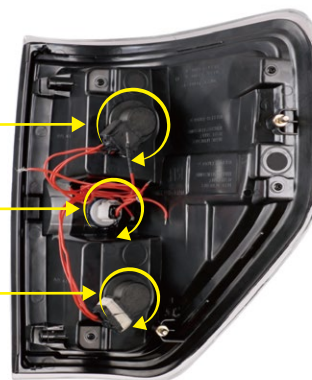
3. Pull the taillight outward.



4. Remove the light sockets by twisting and pulling outward.



5. Connect all the plugs.



6. Push the taillight back into the truck.



7. Put your two bolts back in.



8



9. Repeat the steps 2~8 for the other side.