

CHOOSING THE RIGHT EARRINGS FOR YOUR FACE SHAPE



CHARACTERISTICS

Your face is widest at your cheekbones with a round chin line.

TIP

Drop or chandelier earrings are perfect to elongate and streamline your face. Avoid round or disc earrings which will make your face even rounder.



Round



CHARACTERISTICS

Your forehead may be slightly wider than your chin with a well rounded jawline.

TIP

A lucky face shape which is highly adaptable to almost any type of earring- long earrings or studs!



Oval



CHARACTERISTICS

The width of your forehead and jawline are similar, with your chin square or flat.

TIP

Hoop, drop or rounded earrings are stunning and help balance out the angles on your face. Avoid square earrings as they add more width to your face.



Square

CHOOSING THE RIGHT EARRINGS FOR YOUR FACE SHAPE



CHARACTERISTICS

Your forehead is wider than the width of your jawline with your chin more pointed.

TIP

Dangling earrings which are more rounded at the bottom will reduce the angles around your chin. Avoid slim drop earrings which focus attention to your chin.

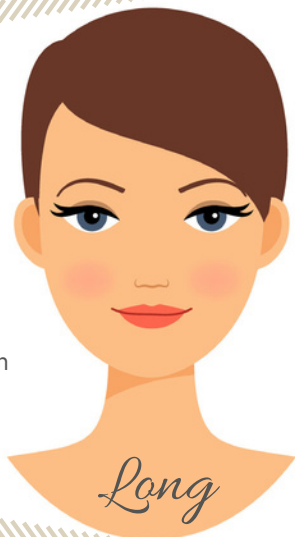


CHARACTERISTICS

Your face width is narrow but lengthy.

TIP

Wear dangle earrings that are well rounded at the bottom to add curves to your face. All kinds of studs also look elegant! Avoid slim & super long earrings which emphasize the face length.



CHARACTERISTICS

Your cheekbones are wider than your forehead and chin.

TIP

All types of stud earrings work well with this face shape.

