

**OZARKÉ**

**INSTRUCTION MANUAL**

# OZARKÉ

Thank you for shopping with Ozarké, we really appreciate your business. Our goal is to provide an excellent customer service before, during and after delivery. We've included a guide on how to install this light, should you require additional assistance please feel free to email us at [info@ozarke.com](mailto:info@ozarke.com) and one of our customer service reps will reach out to assist you.

## Before you get started:

Turn off electrical power to the fixture at the electrical panel. Use the appropriate voltage tester to ensure no power is present at the fixture before you begin work. Do not rely on a wall switch to protect you from electrical shock. Installation requires an experienced electrician.

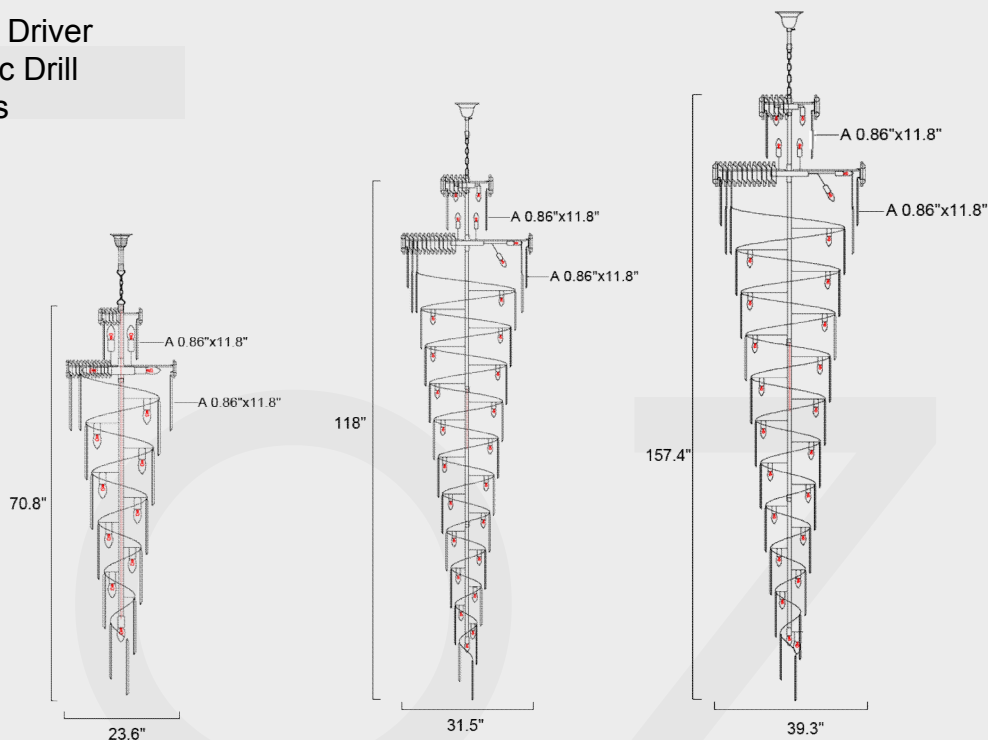
## Assembly Inventory:

Please check the assembly inventory. If you find anything missing reach out to our customer service team.

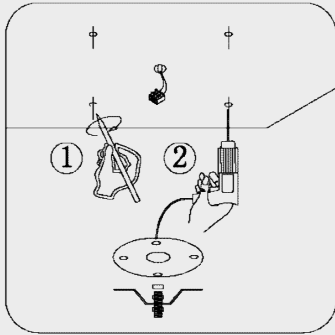
Dimensions	Number of bulbs	A Crystal 0.86"x11.8"	Butterfly Pins
Small (23.6"x70.8")	18pcs	189	189
Medium(31.5"x118")	35pcs	480	480
Large(39.3"x157.4")	58pcs	560	560

## Tools needed (not included):

- 1 x Screw Driver
- 1 x Electric Drill
- 2 x Gloves



# Installation Instructions

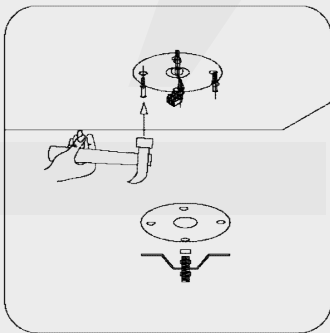


## Step 1:

Use a pencil or a pen to mark the drilling position. You can use the hanging bracket to mark the position of the light. It is very important to ensure you account for the wiring position on your wall or ceiling.

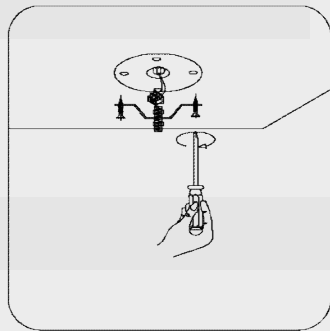
## Step 2:

Using a drill, drill holes into the wall where you marked in step 1



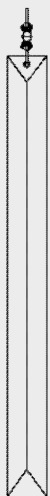
## Step 3:

Insert drywall anchors into each hole. Don't damage or force the anchor in the hole. If the hole is small, try to make the hole(s) bigger.



## Step 4:

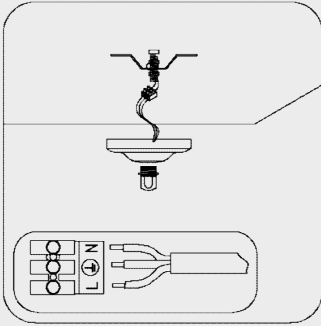
Screw the hanging bracket to the wall using a screw driver. Don't attach the lamp. This step to be completed after wiring.



## Step 5:

Pass the pin through the hole in the crystal , then bend the pin as shown in the image, then hang it in the hole of the lamp frame.

# Installation Instructions

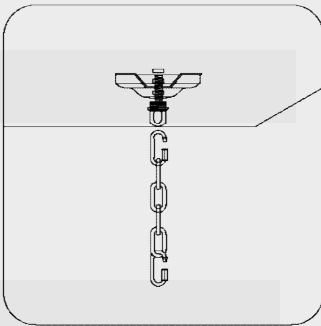


## Step 6:

Hang the crystal rods as shown in image 1.1 (1st page), then finish assembling the lamp frame.

**Black Wire:** Live, **White wire:** Live, **Yellow wire:** Ground

Connect the lamp wires to the wall wires, and tuck inside the lamp or inside the wall



## Step 8:

Attach the lamp body to the hanging board using the provided chain.

Now you may turn your electrical power back on and test the lamp.