

# User Manual

Victorian Elegance  
Table Lamp





WWW.OZARKE.COM

Thank you for shopping with Ozarké, we really appreciate your business. Our goal is to provide an excellent customer service before, during and after delivery. We've included a guide on how to install this lamp, should you require additional assistance please feel free to email us and one of our customer service reps will reach out to assist you.

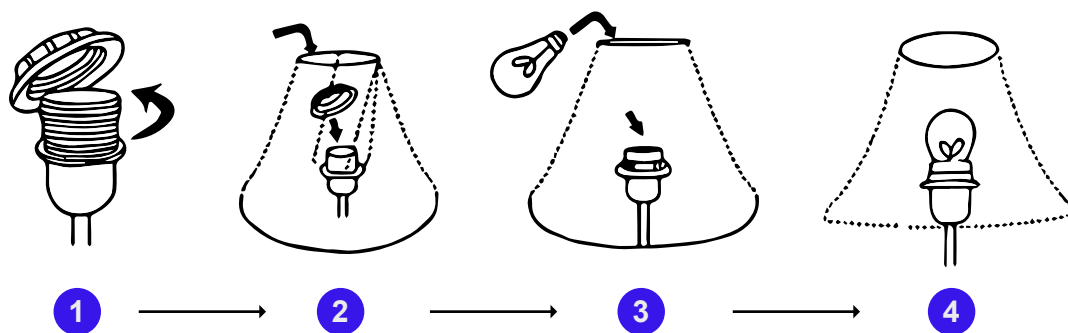
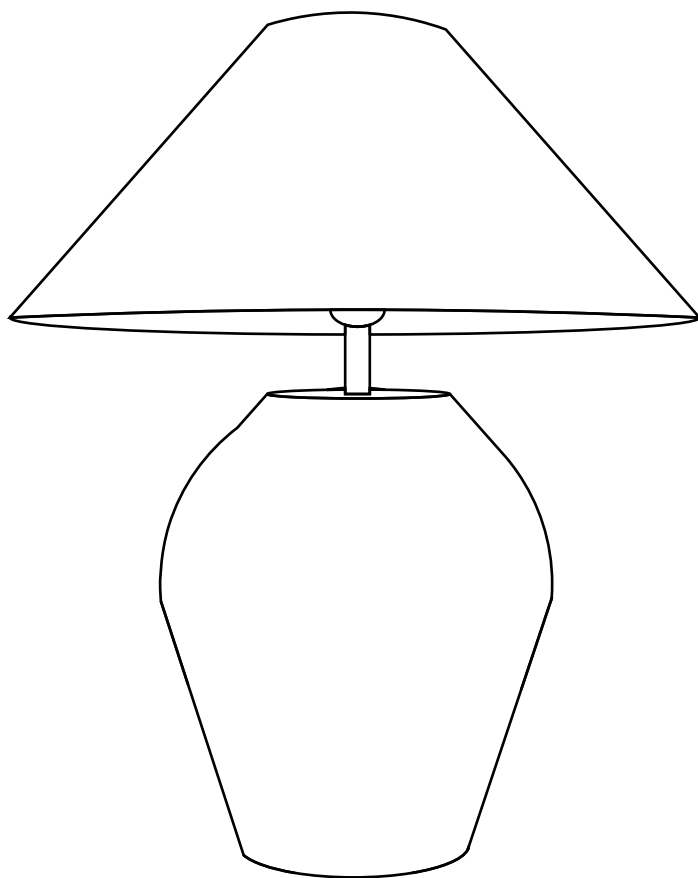
You can reach us via email at [info@ozarke.com](mailto:info@ozarke.com) or via phone at +1-(800) 604-7271



## WARNING!

1. Do not use the power supply beyond the specified range (100-240V, 50HZ).
2. Avoid scratching the surface and wires of the lamp during installation.
3. Do not install the lamp outdoors.
4. The lamp should not be close to corrosive chemical objects or gases.
5. It should not be washed with water. It can only be wiped with a clean soft cloth.





1. Unscrew the lamp holder ring gently to remove it from the lamp fixture.
2. Once the lamp holder ring has been removed, carefully position the lampshade on the lamp holder, ensuring it aligns properly, and then secure it firmly in place by reattaching the lamp holder ring.
3. After the lampshade has been successfully installed, proceed to screw the bulb securely into the lamp holder, making sure it fits securely.
4. Once the bulb has been securely fixed into place, you can switch on the lamp to illuminate the space.

*TIPS: Push-button switches can use CFLs, LED bulbs, and incandescent bulbs, while dimmer switches can only use incandescent bulbs.*

