

OZARKÉ

INSTRUCTION MANUAL

OZARKÉ

Thank you for shopping with Ozarké, we really appreciate your business. Our goal is to provide an excellent customer service before, during and after delivery. We've included a guide on how to install this light, should you require additional assistance please feel free to email us at info@ozarke.com and one of our customer service reps will reach out to assist you.

Before you get started:

When working with electrical wiring, follow these safety instructions to prevent injury or damage:

1. Turn off the power: Before starting any work, turn off the power to the area you will be working in.
2. Use appropriate tools: Only use tools designed for electrical work and in good condition.
3. Wear protective gear: Wear safety glasses, gloves, and other protective gear as necessary.
4. Test for power: Use a non-contact voltage tester to check for electrical current before touching any wires.
5. Avoid wet conditions: Do not work with electrical wiring in wet or damp conditions.
6. Keep a safe distance: Stay away from exposed wires or electrical components.
7. Seek professional help: Consult a qualified electrician if you are unsure about any aspect of electrical wiring or encounter any problems.



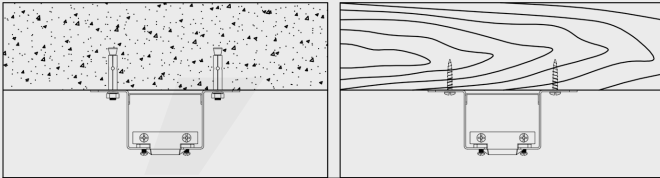
WARNING!

1. Do not use the power supply beyond the specified range (100-240V,50Hz).
2. Avoid scratching the surface and wires of the lamp during installation.
3. Do not install the lamp outdoors.
4. The lamp should not be close to corrosive chemical objects or gases.
It should not be washed with water. It can only be wiped with a clean soft cloth.

Installation Instructions

I. Hanger installation

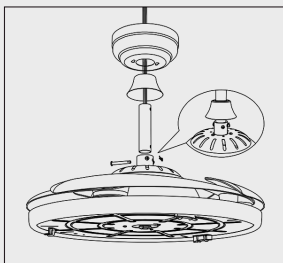
Depending on the ceiling material, use appropriate screws to secure the hanger. Do not fasten the hanger directly onto veneer or gypsum ceilings to prevent wood screws from loosening, which could pose a safety risk and cause resonance with the ceiling fan. Once the hanger is fixed and installed, make sure it can withstand a weight of more than 30kg for safety. You can test this by attempting to pull it by hand.



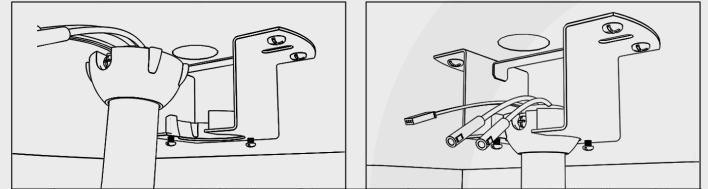
1. Use wood screws to fasten the hanger to the solid wood ceiling.
2. If the ceiling is made of concrete, please use the 8mm percussion drill bit provided to create holes matching the length of the expansion screws. Then, use the expansion screws from the package to secure the hanger to the ceiling.

II. Install the booms, bells, and decorative covers.

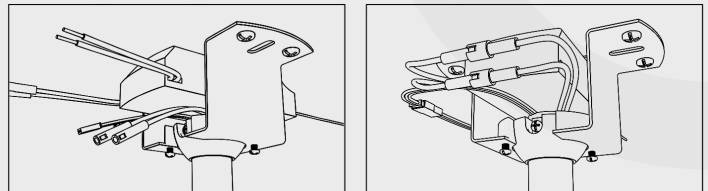
Depending on the ceiling material, use appropriate screws to secure the hanger. Do not fasten the hanger directly onto veneer or gypsum ceilings to prevent wood screws from loosening, which could pose a safety risk and cause resonance with the ceiling fan. Once the hanger is fixed and installed, make sure it can withstand a weight of more than 30kg for safety. You can test this by attempting to pull it by hand.



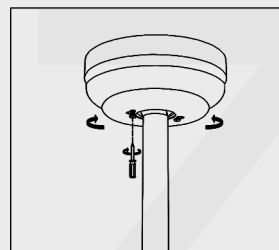
1. Remove the clevis pin, hitch pin, and lock screws from the top of the housing.
2. Route the wires exiting from the top of the fan motor through the coupling cover, canopy, and downrod, passing them through the hanger ball.
3. Align the holes at the bottom of the downrod with the holes in the coupling on the top of the housing.
4. Insert the clevis pin through the holes in the coupling and downrod. Be careful not to jam the clevis pin against the wiring inside the downrod. Then, insert the hitch pin through the hole near the end of the clevis pin until it snaps into place.
5. Finally, tighten the two lock screws on top of the fan housing."



1. Lift the fan assembly onto the mounting bracket opening, ensuring the tabs on the ball align and engage with the slots on the mounting bracket.



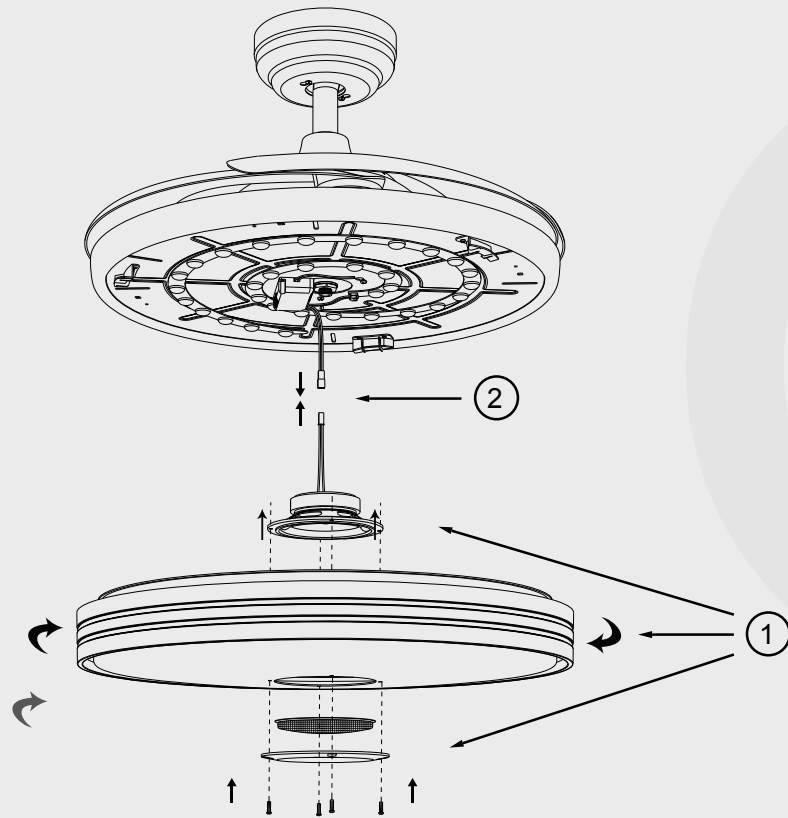
1. Connect the downrod and hanger ball green wire (GROUND) to the household green or bare wire using a wire connecting nut.
2. Join the fan-motor assembly blue wire (LIVE) with the remote receiver's blue wire using their quick connect plugs.
3. Pair the fan-motor assembly white wire (NEUTRAL) with the remote receiver's white wire through their quick connect plugs.
4. Connect the fan-motor's red-gray-pink wires to the corresponding wires on the remote receiver via their quick connect plugs.
5. Link the remote receiver's white wire (NEUTRAL) to the household white wire using a wire connecting nut.
6. Connect the remote receiver's black wire (LIVE) to the household black wire using a wire connecting nut.
7. Secure each wire connecting nut with electrical tape.
8. Ensure there are no loose strands or connections.
9. Turn the wire connecting nuts upward, separating them so that the ground and neutral wires are on one side of the outlet box, and the live wires are on the other side. Gently tuck the connections into the outlet box.
10. Slide the remote receiver between the mounting bracket and the top of the downrod and hanger ball.



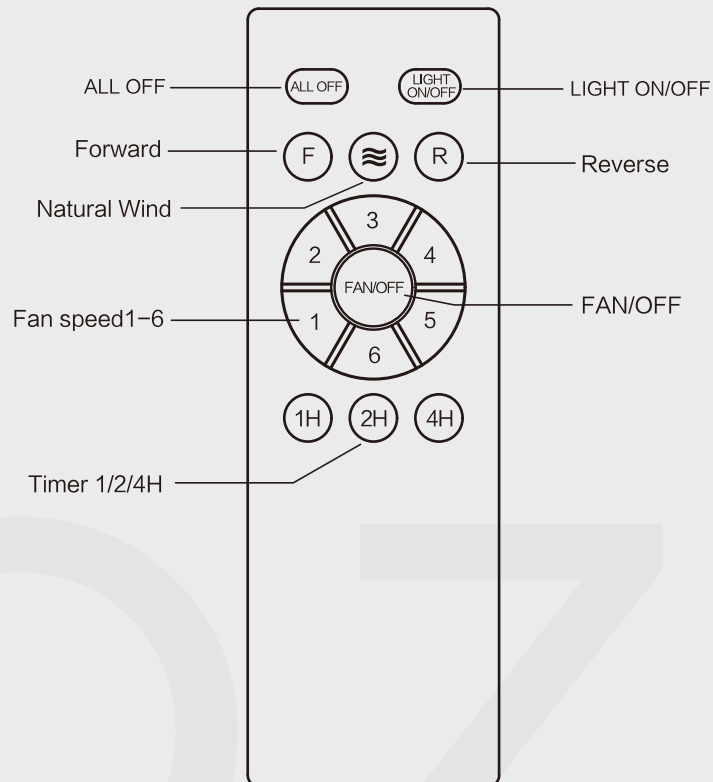
1. Slide and align the canopy with the mounting bracket. Ensure all the electrical wiring is tucked inside the canopy, and make certain that wires are not damaged during this step.
2. Fasten the canopy to the mounting bracket using the preassembled screws provided.

Installation Instructions

I. Shade installation



Remote Instructions



After activating the timer function, do not press other keys on the remote. If other keys are pressed, the timer will be cancel.