

BRAUM

Installation Instructions for your Braum Falcon X Seats
1965-1966 Mustang



FALCON X SERIES

BRAUM

What You Will Need:



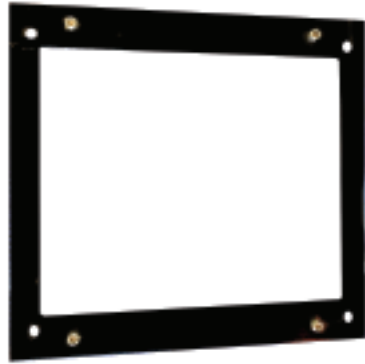
Seat Brackets:

In addition to your aftermarket Braum seats, you will need seat mounting brackets, and the brackets made specifically to fit your Mustang (*in this case a 1965-1966*).

If you're installing two seats make sure you have one driver's side bracket and one passenger's side bracket. They are usually not interchangeable!



Seat Mount (*mounts to bottom of seat*)



Car Mounting Bracket (*mounts seat to Mustang*)



Seat

Sliders (*optional*):

Unlike seat brackets, sliders are technically optional.

If you don't mind losing the ability to slide the seat forwards and backwards you can omit them.

However, keep in mind that the position you install your seats in will be permanent, so make sure you're at a comfortable distance from the pedals and steering wheel before tightening any bolts.

Installation Hardware:

the necessary nuts and bolts you'll need to install your seats probably came with your seats, but you should double-check. At minimum you'll need 4 bolts for the seat bracket, 4 nuts and 4 bolts for the sliders (if applicable).



You will also need the following hardware per seat to mount your rails to your mounting brackets

4/seat - 5/16" - 18 x 1" Grade 8 Hex Cap Bolts

4/seat - 5/16" - 18 Grade 8 Hex Nuts

4/seat - 5/16" - Split Lock Washers

You will need the following hardware per seat to mount your seat to your Mustangs floor pan.

4/seat - 3/8" - 16 x 1 1/4" Grade 8 Hex Cap Bolts

4/seat - 3/8" - 16 Grade 8 Hex Nuts

4/seat - 3/8" - Split Lock Washers

Necessary Tools:

Socket and Ratchet Set: Sizes 3/8" & 5/16" obviously you won't be able to install your seats without the proper tools.

For the majority of cars all that you'll need is a few sockets, an extension, and a ratchet.

you'll need.

Allen Wrench: 7/16"

Wrench Set: Open/Closed wrench set 3/8" & 5/16"

Flathead Screwdrivers: although not always necessary, an assortment of flathead screwdrivers can come in handy.

You might need to pry some plastic covers off to access your seats' bolts. Flathead screwdrivers do an adequate job of this and are common, making them ideal for this task.





Mounting the Seat Slider (optional)

If you decide to use the Braum seat sliders which are an option, you will need to slide the rail back a bit to access the 3/16" mounting hole. You will need to firmly press down on the cad plated portion of the bracket as illustrated in the diagram, all while pulling the slider down. Once the hole is visible you can now finger tighten the bracket to the 3/16" stud with the 3/16" nut.

(Be sure to mount the slider to the correct side. To determine the left and right side of the sliders you can easily determine this by insuring the cad plated slider brackets face towards eachother.)

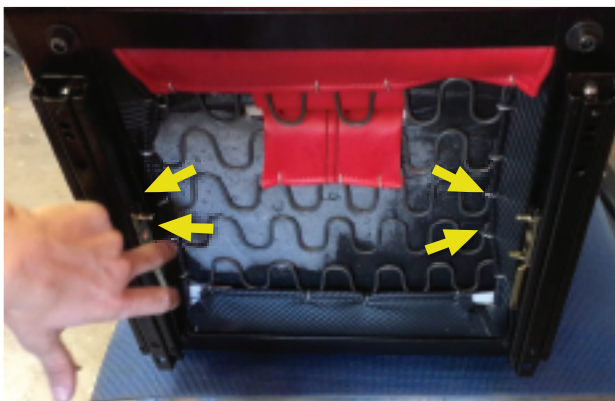
Now you will need to press on the cad portion of the slider bracket again, but this time push the rail in the opposite direction to reveal the lower 3/16" mounting hole, to do the same as you did to the top stud and nut.



Once you have finger tightened the 3/16" nut to the stud, you will need to tighten them up with a 3/16" socket drive wrench. Now repeat the same course of action for the opposing sides slider.

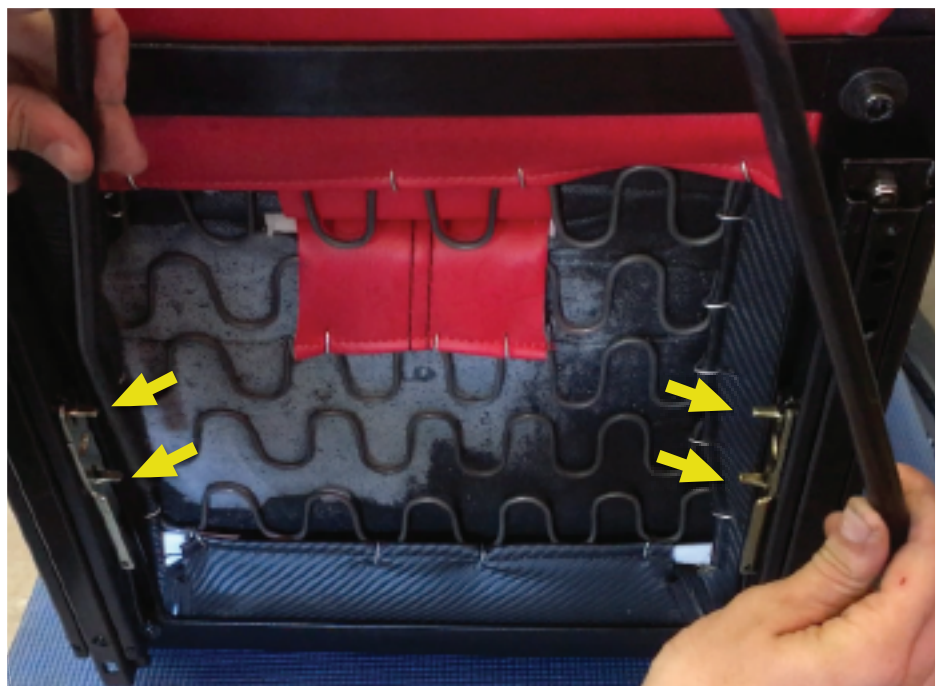
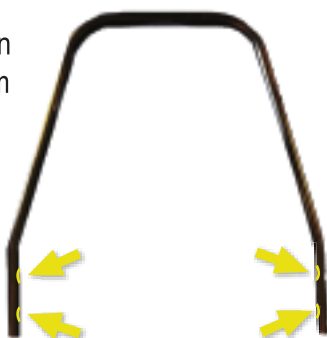
Installing the Seat Sliders Operating Arm

If you opted to use the seat sliders you will want to install the seat slider selecting arm to allow for easy seat adjustments.



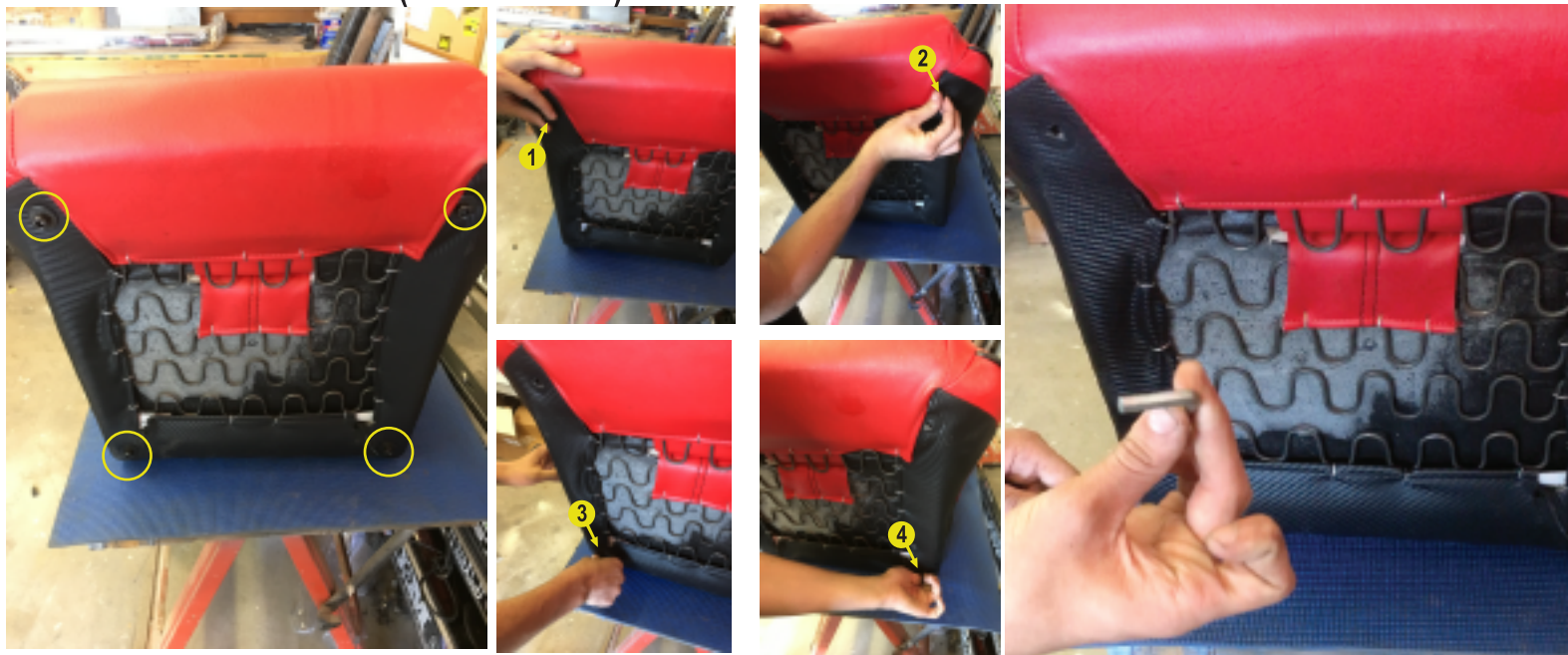
On each side of the slider bracket you will notice two pointed tips on each cad plated bracket.

On each operating arm on the inside near the bottom there are two holes on each side.



Now you will align the seat slider operating arm by aligning the the operating arms holes to the points on the sliders cad plated brackets points securing the arm into its final locaiton.

Assemble Your New Seats (bottom mount):



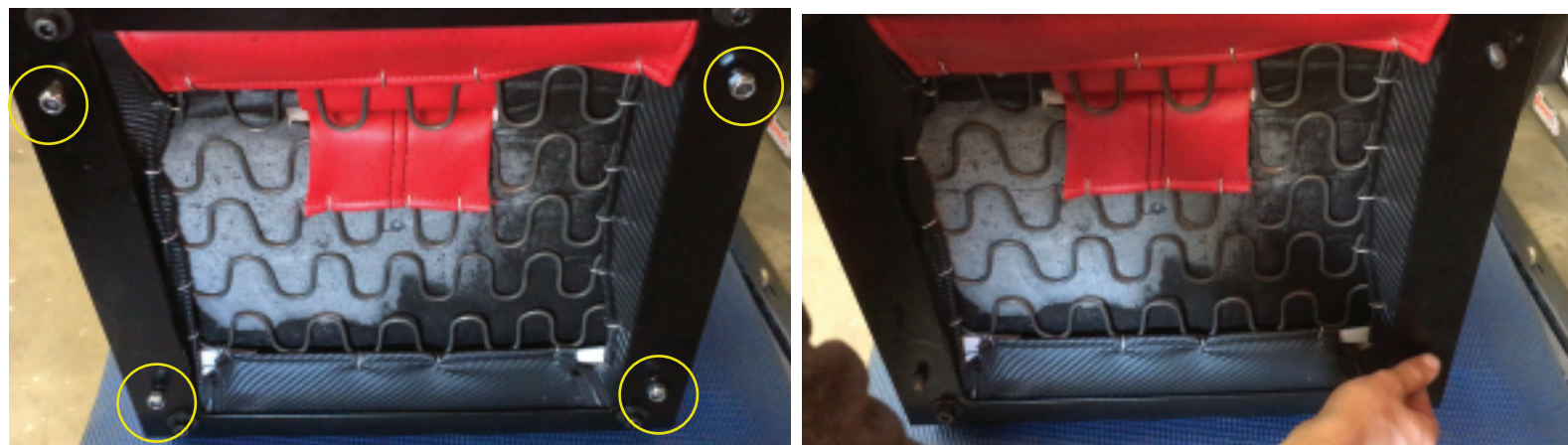
Secure the Seat on a flat, soft surface, and lay the seat on its back exposing the bottom of the seat. Remove the four Allen Bolts with a 7/32" Allen Wrench from the bottom of the seat.



Utilize the four allen bolts you just removed to now tightly secure the seat mount to the bottom of the seat with the same allen wrench.



BRAUM



Remove all 4 of the 3/16" Hex Nuts from the bottom of the seat mount, and set aside to use later to mount the seat brackets, or sliders (if applicable) in the next step.

Install the Car Mounting Bracket

This is the bracket made specifically to fit your Braum Falcon seats to your 1965-66 Mustang.

You will not mount these to the bottom of the seat bracket or the sliders (if applicable).

No matter if you are mounting the seat bracket or the sliders, you will need to utilize four 3/16" Hex bolts and Nuts.

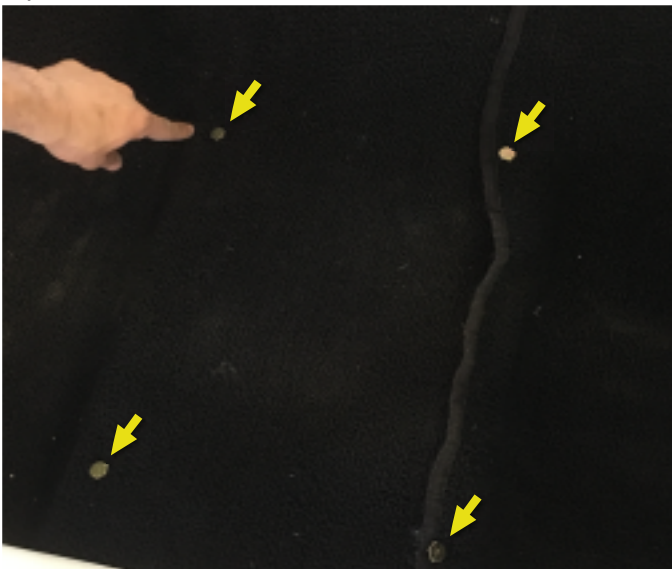
You will want to find the holes in your seat mount, or sliders (if applicable) as you will be inserting the 3/16" hex bolt through the hole of either and out the bottom of the Car Mounting Bracket where you will finger tighten the Car Mounting Bracket into position.

Once you have it in position you will now fasten the 3/16" Hex bolt with the 3/16" nut by utilizing a 3/16" socket wrench, and 3/16" open wrench on the back to secure the bolt from moving while you tighten it all together.



Install the Seat to the Car

You are now ready to install your seats into your Mustang, but you will want to identify where your mounting holes are in your floorboard first.



Once you have identified the bolting locations carefully place the seats into the car placing the car mounting brackets mounting holes directly over the floorboard holes you identified.

Once in place insert the 5/16" hex bolts into the holes, and if you do not have anybody to assist place a closed end 5/16" wrench on top of the bolt while you go underneath the car and secure the seat into place using 5/16" socket wrench with an extension to tighten the 5/16" nut securing the seats to the car. Repeat the process to each bolt, and seat.

Congratulations on installing your Braum Falcon Seats into your 1965-66 Mustang!

BRAUM

FALCON X
1965-1966 MUSTANG

WWW.BRAUMRACING.COM