

# Bushnell®

## neo



## User Manual

Model #  
368050/368050C

Lit # 98-1353/05-10



# Table of Contents

## Section 1: Introduction

Welcome .....	4
Important Information .....	5
Package Contents / Additional Requirements .....	6
Battery Information .....	7

## Section 2: Using the Neo Sync Application

Download the Software .....	8
Install the Software .....	9
About the Sync App / Before You Launch the Sync App .....	10
Downloading Courses .....	11
Sending Courses to Your Neo .....	13
Settings .....	14

## Section 3: Playing Golf With Your Neo

Controls and Parts Reference .....	15
Button Functions .....	16
Start Up / Main Menu .....	17
Play Golf Mode .....	18
<i>Button Functions</i> .....	19
<i>Shot Distance Feature</i> .....	19
<i>The Play Menu</i> .....	20
Map Course Page .....	21
<i>Course Name Function</i> .....	21
<i>Map GPS Point Function</i> .....	22
Other Main Menu Pages .....	23
Settings Page .....	24

## Section 4: Troubleshooting Problems..... 26

# Introduction

## Welcome

---

Dear Valued Consumer:

We sincerely hope you will find your Bushnell Neo both enjoyable and easy to use. Knowing the exact distance for each shot will assist you in lowering your score and enhance your overall golfing experience.

This User Manual was created for you to get the most out of your new device. It only takes a few minutes to read, after which you can immediately begin using the Bushnell Neo and enjoying its many features.

Also, please be sure to set up your iGolf.com membership (using the Neo Sync application as described in this manual). As a member, you have access to all the features and benefits iGolf.com has to offer, including access to an extensive database of GPS enabled golf course files for use on your Bushnell Neo.

Thank you for choosing Bushnell.

### **Legal Disclaimer**

By using this product, you agree that Bushnell Outdoor Products will not be held legally responsible for any injury or damage to you or any person or property caused by the user's improper operation and/or poor judgment while using this product.

*Note: See the Warranty statement for other limitations on our liability.*

### **Additional Information**

The Global Positioning System (GPS), a network of 32 satellites orbiting Earth, is operated and maintained by the U.S. government. This GPS device requires at least 3 satellites to be acquired to accurately determine your position. Any change made to the system by the government could affect the accuracy and performance of this product.

# Introduction

## Package Contents – Additional Requirements

---

### Package Contents

- 1 - Bushnell Neo
- 1 - Belt Clip
- 1 - USB Cable
- 1 - AC/DC 5V Adapter
- 1 - Quick Start Guide

### Additional Requirements\*

PC with Windows 7, Vista, XP or 2000  
or Mac with OS X, version 10.4.x or later \*\*

Available USB port

*\*Required to transfer course data files.*

*\*\*Windows is a registered trademark of Microsoft Corporation in the United States and other countries. Mac and Mac OS are trademarks of Apple Inc., registered in the U.S. and other countries.*

**Note:** earlier versions of the Neo also included a CD-Rom containing the Sync App and Drivers. This CD is no longer included or necessary, as the latest software for your Neo is now provided as a file download at [www.bushnellgolfgps.com](http://www.bushnellgolfgps.com) as described in this manual.

### **Battery Information**

This product contains an internal rechargeable lithium-ion battery. Under normal operating conditions, a new battery will last 14-16 hours on a full charge. However, battery life is diminished due to a variety of factors including temperature and backlight usage. All rechargeable batteries lose their effective charge length over time.

The internal battery can be charged by connecting the included USB cable to the device and a computer. Alternatively, the battery can be charged by connecting the USB cable to the device and using the included adapter to plug the charger into a standard 110V wall outlet. The battery should be charged for at least six hours before using the Neo for the first time.

# Using the Neo Sync Application

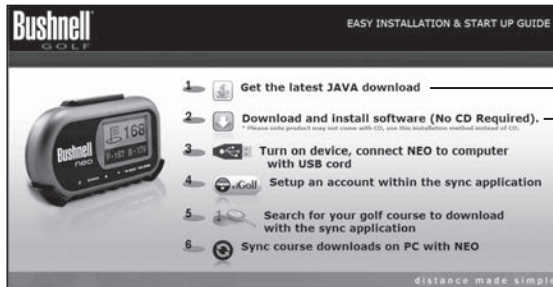
## Download the Software

Follow these instructions to assist in the proper and complete installation of the Neo Sync software application on your computer. Confirm the Neo is **NOT** connected with the USB cable to your computer before beginning the installation.

1. Go to [www.bushnellgolfgps.com](http://www.bushnellgolfgps.com). Make sure you have the latest version & update of Java for Windows\* (link provided-click to download).
2. Click **Download and Install Software** and **Save** the file (zip folder) to your desktop. You will automatically receive the correct file contents for your computer OS.

\* **Mac Users:** use the **Software Update** feature (in the **Apple** menu) to ensure you have the most up-to-date version of Java for your Mac.

## DOWNLOAD



1-JAVA

2-Sync  
App



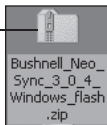
# Using the Neo Sync Application

## Install the Software

1. "Unzip"\* the downloaded file and open the folder inside. Double click **Bushnell\_Neo\_Installer.exe** to run the Neo Sync App installer.
2. Click "**USB Driver Setup**" to install the required driver.
3. Click "**Sync Application**" to install the Sync software.

\*Free software to decompress zip files is available on the internet if it was not included with your PC or Mac.

### 1-Unzip downloaded folder and run the Installer



## INSTALL



2-USB Driver

3-Sync App

# Using the Neo Sync Application

## About the Sync App

---

### Introduction

The Bushnell Neo Sync application provides the user with all the tools required to let the Neo communicate with your Windows or Mac computer\*. Using this interface, the user can control every aspect of golf course file management.

\* *Compatible with Windows 7, Vista, XP, 2000 and Mac OS X*

\* *Windows is a registered trademark of Microsoft Corporation.*

*Mac and Mac OS are trademarks of Apple Inc., registered in the U.S. and other countries.*



### Before You Launch the Sync App

1. Charge the Neo for at least 6 hours using the supplied AC adapter & USB cable (the Neo's battery will also be charged whenever it is connected to a computer, but this will take longer to fully charge it for the first time).
2. Connect the cable to a USB port on your computer.
3. Insert other end of the cable into the USB port on the Neo (under the rubber plug on the left side-see photo above).
4. Hold the Power button for approximately 2 seconds, until the display shows "Bushnell Neo".
5. A "USB Mode" message will appear on the Neo's display when it is ready to accept data, and the Sync App will indicate "Connected" (at top left).



# Using the Neo Sync Application

## Downloading Courses

### Set Up Your iGolf.com Membership

You are now ready to start the Sync App, and use it to set up your iGolf.com membership so you can download the GPS data and scorecard info for any of the thousands of golf courses in their extensive database. *Note that the free "trial" membership option will not allow you to download any course data.*

1. Launch the Bushnell Neo Sync app by clicking the desktop icon, and click the "GPS Download" tab.
2. Fill in the "Join Now" info to setup an iGolf membership (if already a member, just "Log In").

### 1b-GPS Download Tab

### 1a-Launch Sync App



### 2-Fill In Info and Join iGolf.com

# Using the Neo Sync Application

## Downloading Courses

Next, use the Search features on iGolf.com to find the golf course(s) you are interested in playing, and download the GPS data for it.

1. Once logged in, enter the name of a course you want to play in the box under **"SEARCH FOR GOLF COURSE GPS FILES"**, and click **SEARCH**.
2. Select the desired course from the results list to access the course download page. If your search returns too many results, using the **"Advanced Search"** feature instead may produce a shorter list.
3. Click **DOWNLOAD GPS & SCORECARD** to download the data to your computer.

### 1-Search for Course

SEARCH FOR GOLF COURSE GPS FILES

torrey pines] **SEARCH**

[Advanced Search](#)

*Advanced Search option*

### 2-Select Course from Results

GOLF COURSE	CITY	STATE	COUNTRY	GPS
North-Torrey Pines Municipal Golf Course	La Jolla	California	United States	📍
South-Torrey Pines Municipal Golf Course	La Jolla	California	United States	📍
South-Torrey Pines Municipal Golf Course				

**SOUTH TORREY PINES MUNICIPAL GOLF COURSE**

Address: 11480 N Torrey Pines Rd  
La Jolla, California, 92037  
Phone: 858-452-3226  
Email: [Send a Message](#)  
Web: [www.sandiego.oozeforrenti.com](http://www.sandiego.oozeforrenti.com)

Course: Holes: 36 Hole  
Class: Public  
Dress Code: Denim Ok  
Season: Open All Year  
GPS Enabled: Yes

GPS: Front Center Back:   
Custom Points:   
Course Image:

Info Map Weather Share

**DOWNLOAD GPS & SCORECARD** **DOWNLOAD SCORECARD**

**3-Download GPS Course Data**

# Using the Neo Sync Application

## Sending Courses to Your Neo

The downloaded course data is stored by the Sync App, ready to send to your Neo. All courses you've downloaded will always appear under "My Courses" unless you delete them. The Neo can store about 10 courses at a time in its internal memory. Courses already stored on your Neo may easily be deleted to make room for different or additional courses.

1. After downloading, the course name will appear in the **MY COURSES** box in the left column of the Sync App window.
2. Select and highlight the course(s) you want to load onto the Neo from the **MY COURSES** box. Multiple courses can be selected for loading by holding down the Ctrl key on your PC as you click on their names.
3. Click the **SEND** button to transfer the course(s) to the Neo.
4. The **DELETE** button can be used to remove the downloaded data for any courses you do not plan to play again.
5. The (lower) **MY DEVICE** box displays the courses that are currently stored on the connected Neo. Click **DELETE** to remove a course you no longer need. A course can be copied from **MY DEVICE** back to **MY COURSES** by simply dragging its name from one box to the other.



**MY COURSES Box**



**MY DEVICE Box**

# Using the Neo Sync Application

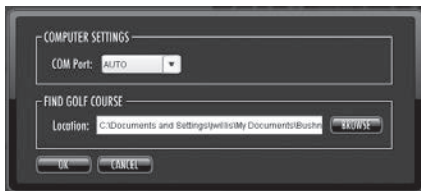
## Settings

If you find it necessary (normally it is not), the **Settings** option of the Sync App allows you to specify or change how the device communicates with your computer and where the downloaded course files are stored.

1. Click **Settings** in the (upper, smaller) **MY DEVICE** box
2. Always leave **COM Port** set to "AUTO" unless the specific port being used is known (this is a Windows only setting).
3. The default course file storage location is C:\My Documents\Bushnell\Neo. If the setting must be changed, be sure to note the new location and save all your future course downloads in the same folder.
4. Click OK to close the Settings Window after making any desired changes.



1-Click **Settings**



**Settings Window**

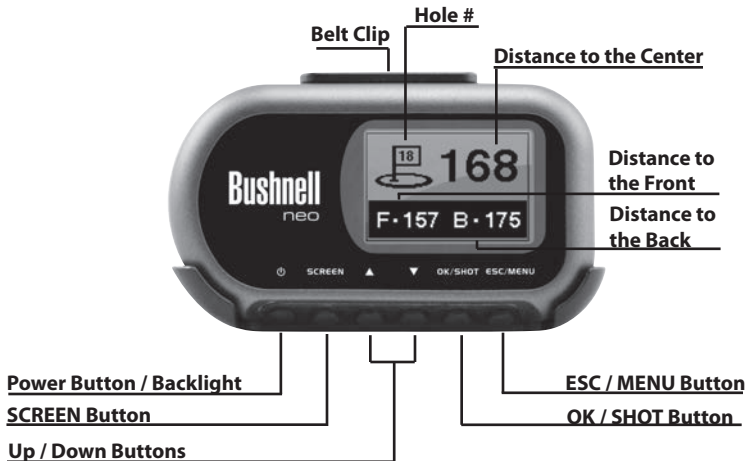
## You're Ready to Hit the Links !

Once you finish sending the the data for all the courses you need from the computer to your Neo, you may disconnect the USB cable from the Neo and close the Sync App.

# Playing Golf With Your Neo

## Controls and Parts Reference

USB Connection >



# Playing Golf With Your Neo

## Button Functions

---

### Power Button

- Turns the device on & off
- Turns the backlight on & off

### SCREEN Button

- Switches between screens within Play Golf mode

### Up Button

- Scrolls up
- Changes hole number (+)

### Down Button

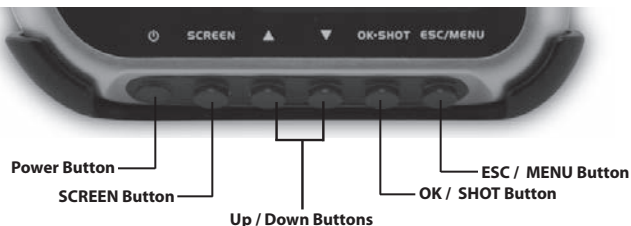
- Scrolls down
- Changes hole number (-)

### OK/SHOT Button

- Selects highlighted option
- Activates Shot Distance

### ESC/MENU Button

- Cancels current operation
- Returns to previous step or screen





# Playing Golf With Your Neo

## Start Up and Main Menu

### Power On

- Press and hold the power button until “Bushnell Neo” appears (about 2 seconds).

### Power Off

- Press and hold the power button until the screen goes blank\*.

### Backlight On/Off

- From any screen, press the power button to turn the backlight on.
- Press power button again to turn the backlight off.

*\* Note: the unit will automatically power off after 45 minutes if no buttons are pressed. To override this, change the “Auto Off” option under “Settings” to “OFF”.*

### Main Menu

The Main Menu displays all the pages (screens) available to the user, which are explained in detail in subsequent sections of this User Manual. To begin using the device, scroll to highlight any page and press OK.



### Page Descriptions

- Play Golf** - - - - - Select to play golf using GPS data
- Map Course** - - - - - Select to create and customize golf course files
- Delete Course** - - - - - Select to delete files from the device
- Satellites** - - - - - Select to view satellite position and signal strength
- Battery Level** - - - - - Select to verify remaining battery power
- Settings** - - - - - Select to customize additional features
- About** - - - - - Select to display version and company information

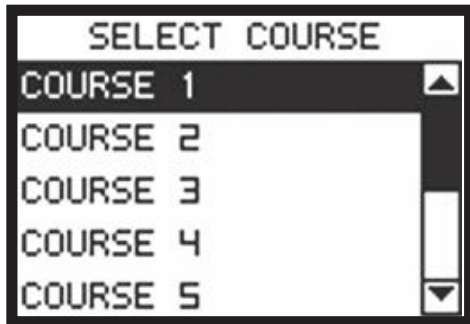
# Playing Golf With Your Neo

## Play Golf Mode

---

### Play Golf Mode

In Play Golf mode, the screens display distance information-you will likely spend most of your time using this screen. Course information must be first downloaded from iGolf.com or manually entered using the Map Course feature. If GPS data is available, distances to the front, center and back of the green and up to four custom points per hole will be displayed upon satellite acquisition. Highlight **PLAY GOLF** on the Main Menu and press **OK**. Scroll to highlight the desired golf course and press **OK**.



# Playing Golf With Your Neo

## Play Golf Mode

### Button Functions (Play Golf Mode)

Up/Down buttons - - - Move between holes

SCREEN button - - - - Move between screens

OK/SHOT button - - - - Activate Shot Distance

ESC/MENU button - - - - Go Back (Keep pressing to return to Play Menu)



### Shot Distance Feature

From any Play Golf screen, press **SHOT** to activate the Shot Distance feature. Press **SHOT** again to establish a starting point. The distance will automatically update as you move. Once you reach the end position, press **SHOT** to freeze the shot distance measurement. Press **SHOT** again to reactivate the Shot Distance feature and establish a new start position. Press **ESC** to return to the previous screen at any time.



# Playing Golf With Your Neo

## Play Golf Mode

---

### The Play Menu

From any Play Golf screen, press **MENU** to access the Play Menu. This menu allows you to easily view satellite reception and battery level status, or modify the settings being used for the current course. The Play Menu options are:



### Map Golf Hole

Allows the user to map the current hole being played without having to exit the game.

### Satellites

Displays various bar lengths to show signal strength for all satellites being tracked.

### Battery Level

Displays a horizontal bar representing the power remaining in the battery.

### Return to Game

Resumes play from previous hole.

### Exit

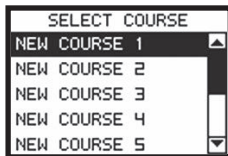
Returns to Main Menu.

# Playing Golf With Your Neo

## Map Course Page

### Map Course

This page provides functions which allow you to manually input a course name and map GPS data points. Existing course files may be customized or new files created using the Neo. Highlight **MAP COURSE** on the Main Menu and press **OK**. Scroll to highlight the desired new or existing golf course and press **OK**. You will then be able to select the Map Course Function you want to use:



**Note:** press **ESC** to go back to the previous page at any time if needed.

### 1. Course Name Function

To revise the course name, highlight **COURSE NAME** and press **OK**. Names are limited to fourteen (14) characters and should be different from any of your other golf courses. Using the UP/DOWN buttons, scroll to highlight each character and press **OK**. To delete characters, scroll to "BKSPC" and press **OK**. When finished, scroll to highlight "SAVE" and press **OK**.

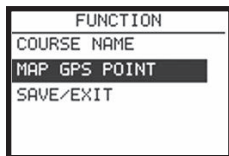
**Note:** Course files may also be renamed using the Neo Sync application.

# Playing Golf With Your Neo

## Map Course Page

### 2. Map GPS Point Function

To add or revise GPS data, highlight **MAP GPS POINT** and press **OK**. Select the desired hole using the **UP/DOWN** buttons and press **OK**. Highlight the point (Front, Center, Back) to map and press **OK**. Stand at the desired location and press **OK** to register the point. **Do not move until the process is complete.** Repeat these instructions for all desired points. When finished, scroll to highlight **“Save”** and press **OK**. Repeat for all holes, then scroll past the last hole to select **Save/Exit** and press **OK** to return to the Main Menu.



To map a custom point, highlight its default name (CSTM 1, etc.) and press **OK**. You can select a name for it from a list of common **ABBREVIATIONS** (Creek, Hazard, etc) or give it your own **USER DEFINED** name. After you have selected or created a name for the custom point, make sure you are standing at the point, and press **OK** to register it. You can also just accept the default name and go directly to **REGISTER POINT**.

### Save/Exit

After any course name changes and/or custom points have been entered or captured, be sure to scroll to **SAVE/EXIT** and press **OK** to save all information. All entered data will be lost if either Map Course function is exited without saving first.



# Playing Golf With Your Neo

## Other Main Menu Pages

---

### Delete Course

This page allows you to permanently remove a golf course file from the Neo. Highlight **DELETE COURSE** on the Main Menu and press **OK**. Scroll (**Up/Down**) to highlight the golf course to delete and press **OK**. To remove the course from device, confirm by highlighting “**YES**” and pressing **OK**. (**Note:** *this only deletes the course from the Neo device. All downloaded course data is still saved on your computer, and may be reloaded onto the Neo later by using the Sync App*). Press **ESC** to return to the Main Menu.

### Satellites

This page displays the GPS satellites recognized by the device.

Highlight **SATELLITES** on the Main Menu and press **OK**.

Satellites providing location data to the device for use in distance calculation are represented by black horizontal bars and black boxes around the satellite numbers. Typically, at least three satellites providing location data are required before GPS distance can be calculated.

Press **ESC** to return to the Main Menu.

### Battery Level

This page displays the status of the battery in the device.

Highlight **BATTERY LEVEL** on the Main Menu and press **OK**.

Battery information is displayed using a horizontal bar representing the amount of power remaining in the battery.

Press **ESC** to return to the Main Menu.

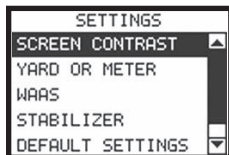
# Playing Golf With Your Neo

## Settings Page

---

### Settings

This page provides a menu with various settings which allow you to set your Neo user preferences, such as screen contrast, distance units and GPS parameters. Highlight **SETTINGS** on the Main Menu and press **OK**. The Settings menu options are:



### **Screen Contrast**

Allows you to adjust the contrast of the screen to aid viewing in various light conditions.

### **Yard or Meter**

Allows you to select yards or meters as the measure of distance.

### **WAAS**

Allows you to select if location correction is used to improve GPS accuracy within the United States. Commonly known as WAAS, this system of satellites and ground stations provides GPS signal corrections for much of the U.S. You may need to adjust the WAAS setting according to geographic location. The default setting on the device is "On".



### Stabilizer

Allows you to select the rate at which the Neo refreshes the GPS position. With stabilizer set to “On”, the Neo will not refresh GPS distance readings once movement has ceased. This can be useful if you experience fluctuating distance readings, even when you remain stationary. The default setting is “On”.

### Default Settings

Allows you to reset the Neo to factory default settings. **All data, including course files, will be permanently deleted.** It is recommended that you save all of the Neo’s files to your computer prior to accessing this setting.

### Update

For factory use only.

### Auto Off

The default “On” setting will shut power off after 45 minutes of inactivity (no buttons pressed) to save battery power. Selecting “Off” will allow the Neo to remain powered on with no time limit, until the Neo is manually turned off.

# Troubleshooting Problems

***Problem: The backlight does not work.***

- Turn the Neo off for ten (10) seconds and try again. Re-test in a low-light environment.
- From the Main Menu, press and release the power button.

***Problem: The Neo will not turn off.***

- Press and hold power button for at least ten (10) seconds.

***Problem: There are no golf course names listed in the Play Golf menu.***

- No golf course files are loaded on the Neo.
- Transfer file again and confirm that the Neo Sync software reads "Completed" before disconnecting the Neo.

***Problem: There is no GPS data for the selected golf course.***

- No golf course files are loaded on the Neo.
- Confirm the GPS file was downloaded from the iGolf.com site. (Note: GPS data is not included in Scorecard (only) file downloads).
- Confirm mapped GPS points were saved prior to exiting the Map Course page.
- Confirm the Neo has acquired at least 3 satellites (using SATELLITES on the Settings page menu).

***Problem: There are no custom points available for my golf course.***

- No custom points are loaded on the Neo.
- Confirm custom points are available on iGolf.com for the golf course in question.

# Troubleshooting Problems

- Confirm the GPS file was downloaded from the iGolf.com site. (Note: GPS data is not included in Scorecard (only) file downloads).
- Confirm mapped GPS points were saved prior to exiting the Map Course page.

***Problem: GPS points cannot be mapped/registered on device.***

- Ensure satellite strength is sufficient to obtain accurate data.
- Move to a clear, unobstructed view of the sky (i.e. no trees, buildings or objects that might interfere GPS satellite strength).
- Time of day may affect GPS signal strength. Try again during different hours of the day.

***Problem: Entire golf course name cannot be entered in the space provided.***

- Limit the golf course name to fourteen (14) characters.
- Abbreviate the name so it is different from other golf courses on device.

***Problem: There are no satellites in view.***

- Move to a clear, unobstructed view of the sky (i.e. no trees, buildings or objects that might interfere GPS satellite strength).
- The time required to acquire satellites may increase to 5-10 minutes for first use or if the Neo has not been used for an extended period of time.

***Problem: The distances the Neo displays seem inaccurate.***

- Confirm the correct golf course and hole number were selected from the Play Golf screens.
- Move to a clear, unobstructed view of the sky (i.e. no trees, buildings or

# Troubleshooting Problems

- objects that might interfere GPS satellite strength).
- Go to the Settings page menu and set WAAS to “Off”.
- Go to the Settings page menu and set Stabilizer to “On”.
- Remap GPS points using the Neo and confirm accuracy.
- Report any GPS or scorecard errors found to iGolf.com.

**Problem: The distances on the Neo are in yards, not meters.**

- Go to the Settings page menu and set YARD OR METER to “Meters”.

**Problem: The distance displayed on the Neo is fluctuating.**

- Go to the Settings page menu and set STABILIZER to “On”.
- Move to a clear, unobstructed view of the sky (i.e. no trees, buildings or objects that might interfere GPS satellite strength).
- Go to the Settings page menu and set WAAS to “Off”.

**Problem: Sync software does not state “Connected”.**

- Confirm the USB cable is connected to computer.
- Confirm the USB cable is connected to the Neo.
- Confirm the Neo Sync software was installed correctly. Remove and reinstall the USB driver and Sync application if necessary.
- Confirm the correct COM port is selected (check “Settings” in Sync app).

**Problem: Golf course files cannot be sent to the Neo.**

- Confirm USB cable is connected to the Neo.
- Confirm sync software was installed correctly. Remove and reinstall the USB driver and Sync application if necessary.

# Troubleshooting Problems

- Confirm correct COM port selected.
- Confirm status as “Connected” on sync software.
- Confirm file to be sent is selected on sync software.

***Problem: Golf course files cannot be saved to computer from the Neo.***

- Confirm the USB cable is connected to the Neo.
- Confirm the Neo Sync software was installed correctly. Remove and reinstall the USB driver and Sync application if necessary.
- Confirm the correct COM port is selected (check “Settings” in Sync app).
- Confirm status as “Connected” on Sync software.

***Problem: No golf course files are available to transfer in Sync application.***

- Check “Settings” in Sync application to view the file save location. The default location is C:\My Documents\Bushnell.
- Perform a search for the file using the search feature on your computer.

***Problem: Saved golf course files cannot be located on computer.***

- Check “Settings” in Sync application to view the file save location. The default location is C:\My Documents\Bushnell.
- Perform a search for the file using the search feature on your computer.

***Problem: No more golf course files can be transferred to the Neo.***

- Delete unused files from the Neo to make room for new files.
- Be sure that files deleted from the Neo are safely saved on your computer before confirming deletion.
- Approximately ten (10) courses can be stored on your Neo.

# Warranty

## ONE YEAR LIMITED WARRANTY

Your Bushnell product is warranted to be free of defects in materials and workmanship for one year after the date of purchase. In the event of a defect under this warranty, we will, at our option, repair or replace the product, provided that you return the product postage prepaid. This warranty does not cover damages caused by misuse, improper handling, installation, or maintenance provided by someone other than a Bushnell Authorized Service Department.

Any return made under this warranty must be accompanied by the items listed below:

- 1) A check/money order in the amount of \$10.00 to cover the cost of postage and handling
- 2) Name and address for product return
- 3) An explanation of the defect
- 4) Proof of Date Purchased
- 5) Product should be well packed in a sturdy outside shipping carton, to prevent damage in transit, with return postage prepaid to the address listed below:

**IN U.S.A. Send To:**

Bushnell Outdoor Products  
Attn.: Repairs  
9200 Cody  
Overland Park, Kansas 66214

**IN CANADA Send To:**

Bushnell Outdoor Products  
Attn.: Repairs  
25A East Pearce Street, Unit 1  
Richmond Hill, Ontario L4B 2M9

For products purchased outside the United States or Canada please contact your local dealer for applicable warranty information. In Europe you may also contact Bushnell at:

Bushnell Germany GmbH  
European Service Centre  
Mathias-Brüggen-Str. 80  
D-50827 Köln  
GERMANY  
Tel: +49 221 995568-0  
Fax: +49 221 995568-20

This warranty gives you specific legal rights.  
You may have other rights which vary from country to country.

©2010 Bushnell Outdoor Products

# FCC Statement / WEEE

## FCC Compliance Statement

This device complies with Part 15 of the FCC interference limits for Class B digital devices FOR HOME OR OFFICE USE. These limits are designed to provide reasonable protection against harmful interference in a residential installation, and are more stringent than "outdoor" requirements.

Operation of this device is subject to the following conditions; (1) This device may not cause harmful interference, and (2) this device must accept any interference received, including interference that may cause undesired operation.

This equipment generates, uses and can radiate radio frequency energy and, if not installed and used in accordance with the instructions, may cause harmful interference to radio communications. However, there is no guarantee that interference will not occur in a particular installation. If this equipment does cause harmful interference to radio or television reception, which can be determined by turning the equipment off and on, the user is encouraged to try to correct the interference by one or more of the following measures:

- Reorient or relocate the receiving antenna.
- Increase the separation between the equipment and antenna.
- Connect the equipment into an outlet on a circuit different from that to which the receiver is connected.
- Consult the dealer or an experienced radio/TV technician for help.

The device does not contain any user-serviceable parts. Repairs should only be made by an Authorized Bushnell repair center. Unauthorized repairs or modifications could result in permanent damage to the equipment, and will void your warranty and your authority to operate this device under Part 15 regulations.

The shielded interface cable which is provided must be used with the equipment in order to comply with the limits for a digital device pursuant to Subpart B of Part 15 of FCC Rules.



<b>FR</b>	<b>Participes à la protection de l'environnement !</b> ① Évitez d'acheter certains produits dangereux pour l'environnement. ② Confirmez toujours dans un accord de vente ou à défaut dans un contrat verbal signé pour que les fournisseurs sont efficaces.
<b>DE</b>	<b>Umweltumwelt protection first!</b> ① Bitte kaufen Sie keine gefährlichen Produkte für die Umwelt. ② Bitte bestätigen Sie dies in einem schriftlichen Vertrag oder, falls dies nicht möglich ist, in einem mündlichen Vertrag.
<b>FR</b>	<b>Schützen Sie die Umwelt!</b> ① Bitte kaufen Sie keine gefährlichen Produkte für die Umwelt. ② Bitte bestätigen Sie dies in einem schriftlichen Vertrag oder, falls dies nicht möglich ist, in einem mündlichen Vertrag.
<b>DE</b>	<b>Participes à la protection de l'environnement !</b> ① Évitez d'acheter certains produits dangereux pour l'environnement. ② Confirmez toujours dans un accord de vente ou à défaut dans un contrat verbal signé pour que les fournisseurs sont efficaces.
<b>FR</b>	<b>Participes à la protection de l'environnement !</b> ① Évitez d'acheter certains produits dangereux pour l'environnement. ② Confirmez toujours dans un accord de vente ou à défaut dans un contrat verbal signé pour que les fournisseurs sont efficaces.
<b>DE</b>	<b>Vi skal alle være med til at beskytte miljøet!</b> ① Undgå at købe visse farlige produkter der kan gøre miljøet forurenet. ② Hvis det er et skriftligt købsbrev eller ellers et mundtligt kontrakt skal det altid være et bekræftet dokument.
<b>FR</b>	<b>Participes en la conservation del medio ambiente ! !</b> ① Evite comprar ciertos productos peligrosos para el medio ambiente. ② Confirme siempre en un acuerdo de venta o, en su defecto, en un contrato verbal firmado por los proveedores.
<b>FR</b>	<b>Handhållningsanvisningar om miljöskydd!</b> ① Undvik att köpa vissa farliga produkter som kan föroreninga miljön. ② Bekräfta alltid i ett skriftligt köpsbrev eller i ett muntligt kontrakt som alltid är ett bekräftat dokument.
<b>DE</b>	<b>At očuvání životního prostředí všichni musíme pomáhat!</b> ① Některé výrobky mohou být nebezpečné pro životní prostředí. ② Před nákupem si vždy ověřte, že výrobek nepoškodí životní prostředí, a potvrďte to vždy písemně nebo ústně.
<b>FR</b>	<b>Proteção ao meio ambiente em primeiro lugar!</b> ① Não compre certos produtos perigosos, que podem ser prejudiciais ao meio ambiente. ② Sempre confirme em um acordo de venda ou contrato verbal.



Specifications and designs are subject to change without any notice or obligation on the part of the manufacturer.

# Bushnell®

## neo

**Customer Service: (800) 423-3537**

**[www.bushnell.com](http://www.bushnell.com)**

©2010 Bushnell Outdoor Products