

# CAROLINA DREAM

## PRODUCT CHAIN OF CUSTODY REPORT

*Product Batch* **500mg Pet CBD Full-Spec Tincture**  
*Info at a Glance:* **BATCH #GRND4 | CBD: 506.31mg | THC: 0.056%**



**CULTIVAR** Straight Arrow Hemp Farms | Travelers Rest, South Carolina

Planted:  
22 May, 2019

Harvested:  
18 September, 2019

Tested:  
25 October, 2019

[Click Here for Certificate of Analysis](#)



**PROCESSOR** Sycamore BioPharma | West Columbia, South Carolina

Biomass Received:  
2 November, 2019

Processed:  
13 November, 2019

Completed & Stored:  
15 November, 2019

[Click Here for Certificate of Analysis](#)



**PRODUCT MANUFACTURED** Carolina Dream Distribution, Inc.  
Charleston, South Carolina

Distillate Received:  
22 May, 2022

Manufactured:  
15 June, 2022

Packaged:  
28 August, 2022

[Click Here for Certificate of Analysis](#)

**TRANSPARENCY, FROM SEED TO RECEIPT**

  @thecarolinadream | [www.carolinadream.com](http://www.carolinadream.com)

## Certificate of Analysis

Report Date November 01, 2019

**Company:** Straight Arrow Hemp

**Project:** Straight Arrow Hemp

**GEL SDG:** 494349

**Contact:** Tom McNeil

**GEL Sample ID:** 494349001

**Matrix:** Vegetation

**Client Sample ID:** Sample A - Small Bag

**Collect Date:** 21-OCT-19 08:00

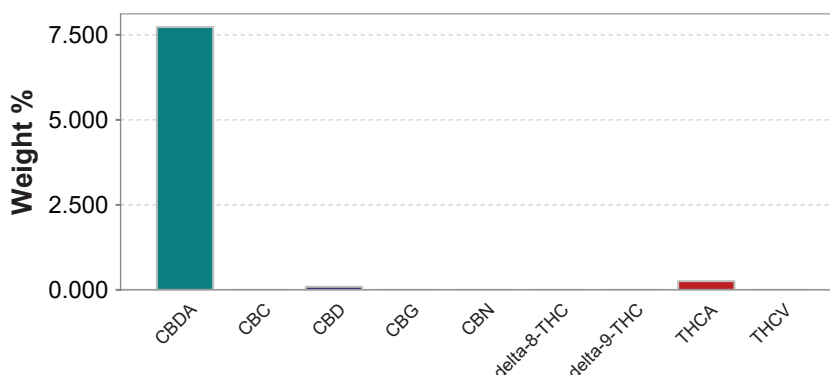
**Receive Date:** 25-OCT-19 16:55



### HPLC Cannabinoids

Analyte	Result	Weight %	Analysis Date	Batch	Dilution	Method
CBDA	77.3 mg/g	7.73 %	26-Oct-19 18:15	1931941	400	GEL SOP GL-OA -E-078
CBC	< 0.253 mg/g	< 0.0253 %	26-Oct-19 18:27	1931941	20	GEL SOP GL-OA -E-078
CBD	0.9 mg/g	0.09 %				
CBG	< 0.253 mg/g	< 0.0253 %				
CBN	< 0.253 mg/g	< 0.0253 %				
delta-8-THC	< 0.253 mg/g	< 0.0253 %				
delta-9-THC	< 0.253 mg/g	< 0.0253 %				
THCA	2.57 mg/g	0.257 %				
THCV	< 0.253 mg/g	< 0.0253 %				
Total Potential CBD (CBD + CBDA x 0.877)		6.87 %	28-Oct-19 11:30	1931942	1	GEL SOP GL-OA -E-078
Total Potential THC (d9-THC + d9-THCA x 0.877)		0.225 %				

### Cannabinoid Profile



ACCREDITED

Certificate #2567.1

Test results for NELAP or ISO 17025 accredited results are verified to meet the requirements of those standards, with any exceptions noted. The results reported relate only to the items tested and to the sample as received by the laboratory. These results may not be reproduced, except as full reports, without approval by the laboratory. Copies of GEL's accreditations and certifications can be found on our website at [www.gel.com](http://www.gel.com).





## Certificate of Analysis

Report Date November 01, 2019

**Company:** Straight Arrow Hemp

**Project:** Straight Arrow Hemp

**GEL SDG:** 494349

**Contact:** Tom McNeil

**GEL Sample ID:** 494349001

**Matrix:** Vegetation

**Client Sample ID:** Sample A - Small Bag

**Collect Date:** 21-OCT-19 08:00

**Receive Date:** 25-OCT-19 16:55



### Mercury Analysis-CVAA

Analyte	Result	Weight %	Analysis Date	Batch	Dilution	Method
Mercury	< 60.0 ug/kg		29-Oct-19 11:42	1932090	1	SW846 7471B
Arsenic	< 2950 ug/kg		29-Oct-19 12:10	1932110	1	SW846 3050B/6010D
Cadmium	< 491 ug/kg					
Lead	< 1960 ug/kg					



Certificate #2567.1

Test results for NELAP or ISO 17025 accredited results are verified to meet the requirements of those standards, with any exceptions noted. The results reported relate only to the items tested and to the sample as received by the laboratory. These results may not be reproduced, except as full reports, without approval by the laboratory. Copies of GEL's accreditations and certifications can be found on our website at [www.gel.com](http://www.gel.com).



Prepared for:  
**Zitro Farms, Inc**

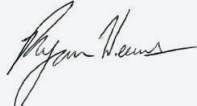
 8465 Chisolm Plantation Rd.  
 Edisto Island, SC USA 29438

**Sycomre BioPharma CDB Disollete**

Batch ID or Lot Number: <b>1-20</b>	Test: <b>Potency</b>	Reported: <b>13Apr2022</b>	USDA License: N/A
Matrix: Concentrate	Test ID: T000202280	Started: 12Apr2022	Sampler ID: N/A
	Method(s): TM14 (HPLC-DAD): Potency - Full Spectrum Analysis, 0.3% THC	Received: 12Apr2022	Status: N/A

**Cannabinoids**

	LOD (%)	LOQ (%)	Result (%)	Result (mg/g)	Notes
Cannabichromene (CBC)	0.057	0.193	3.118	31.18	
Cannabichromenic Acid (CBCA)	0.052	0.177	0.097*	0.97*	
Cannabidiol (CBD)	0.153	0.474	75.527	755.27	
Cannabidiolic Acid (CBDA)	0.157	0.486	3.060	30.60	
Cannabidivarin (CBDV)	0.036	0.112	0.480	4.80	
Cannabidivarinic Acid (CBDVA)	0.065	0.203	ND	ND	
Cannabigerol (CBG)	0.032	0.110	1.153	11.53	
Cannabigerolic Acid (CBGA)	0.135	0.458	ND	ND	
Cannabinol (CBN)	0.042	0.143	0.232	2.32	
Cannabinolic Acid (CBNA)	0.092	0.312	ND	ND	
Delta 8-Tetrahydrocannabinol (Delta 8-THC)	0.161	0.546	0.23*	2.3*	
Delta 9-Tetrahydrocannabinol (Delta 9-THC)	0.003	0.010	3.053	30.53	
Delta 9-Tetrahydrocannabinolic Acid (THCA-A)	0.003	0.009	ND	ND	
Tetrahydrocannabivarin (THCV)	0.029	0.100	ND	ND	
Tetrahydrocannabivarinic Acid (THCVA)	0.114	0.387	ND	ND	
<b>Total Cannabinoids</b>			<b>86.950</b>	<b>869.50</b>	
Total Potential THC			3.053	30.53	
Total Potential CBD			78.211	782.11	

**Final Approval**


 Ryan Weems  
 13Apr2022  
 05:32:00 PM MDT

PREPARED BY / DATE



 Daniel Weidensaul  
 13Apr2022  
 05:41:00 PM MDT

APPROVED BY / DATE


<https://results.botanacor.com/api/v1/coas/uuid/04a5441e-e510-4718-860b-e63e3f74c25f>
**Definitions**

% = % (w/w) = Percent (weight of analyte / weight of product). ND = None Detected (defined by dynamic range of the method).

Total Potential Delta 9-THC or CBD is calculated to take into account the loss of a carboxyl group during decarboxylation step, using the following formulas: Total Potential Delta 9-THC = Delta 9-THC + (Delta 9-THCa \*(0.877)) and Total CBD = CBD + (CBDA \*(0.877)).

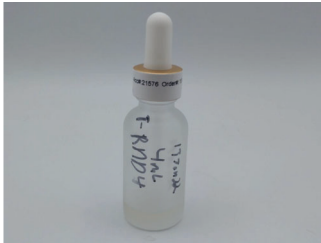
Testing results are based solely upon the sample submitted to Botanacor Laboratories, LLC, in the condition it was received. Botanacor Laboratories, LLC warrants that all analytical work is conducted professionally in accordance with all applicable standard laboratory practices using validated methods. Data was generated using an unbroken chain of comparison to NIST traceable Reference Standards and Certified Reference Materials. This report may not be reproduced, except in full, without the written approval of Botanacor Laboratories, LLC. ISO/ IEC 17025:2005 Accredited A2LA.



**Carolina Dream**  
 8465 Chisolm Plantation Rd.  
 Edisto Island, SC 29438  
 cody@carolinadream.com  
 843-532-2016

**Sample: 06-17-2022-21576**  
 Sample Received: 06/17/2022;  
 Report Created: 06/22/2022; Expires: 06/21/2023

**T-RND4**  
 Ingestible, Tincture



**0.056%**  
 Total THC

**0.056%**  
 Δ-9 THC

**17.388 mg/mL**  
 Total Cannabinoids

**16.212 mg/mL**  
 Total CBD

## Cannabinoids

(Testing Method: HPLC, CON-P-3000)  
 Date Tested: 06/17/2022

Complete

Analyte	LOD	LOQ	Mass	Mass	
	mg/mL	mg/mL	mg/mL	mg/g	
Δ-8-Tetrahydrocannabinol (Δ-8 THC)	0.087	0.131	ND	ND	
Δ-9-Tetrahydrocannabinol (Δ-9 THC)	0.087	0.131	<b>0.520</b>	<b>0.560</b>	
Δ-9-Tetrahydrocannabinolic Acid (THCA-A)	0.087	0.131	ND	ND	
Δ-9-Tetrahydrocannabinophorol (Δ-9-THCP)	0.087	0.131	ND	ND	
Δ-9-Tetrahydrocannabivarin (Δ-9-THCV)	0.087	0.131	ND	ND	
Δ-9-Tetrahydrocannabivarinic Acid (Δ-9-THCVA)	0.087	0.131	ND	ND	
R-Δ-10-Tetrahydrocannabinol (R-Δ-10-THC)	0.087	0.131	ND	ND	
S-Δ-10-Tetrahydrocannabinol (S-Δ-10-THC)	0.087	0.131	ND	ND	
9R-Hexahydrocannabinol (9R-HHC)	0.087	0.131	ND	ND	
9S-Hexahydrocannabinol (9S-HHC)	0.087	0.131	ND	ND	
Tetrahydrocannabinol Acetate (THCO)	0.087	0.131	ND	ND	
Cannabidivarin (CBDV)	0.066	0.131	<LOQ	<LOQ	
Cannabidivarinic Acid (CBDVA)	0.087	0.131	ND	ND	
Cannabidiol (CBD)	0.087	0.131	<b>15.679</b>	<b>16.877</b>	
Cannabidiolic Acid (CBDA)	0.087	0.131	<b>0.608</b>	<b>0.655</b>	
Cannabigerol (CBG)	0.087	0.131	<LOQ	<LOQ	
Cannabigerolic Acid (CBGA)	0.087	0.131	ND	ND	
Cannabinol (CBN)	0.087	0.131	ND	ND	
Cannabinolic Acid (CBNA)	0.087	0.131	ND	ND	
Cannabichromene (CBC)	0.087	0.131	<b>0.581</b>	<b>0.625</b>	
Cannabichromenic Acid (CBCA)	0.087	0.131	ND	ND	
<b>Total</b>			<b>17.388</b>	<b>18.717</b>	

Total THC = THCa \* 0.877 + Δ9-THC; Total CBD = CBDa \* 0.877 + CBD; LOQ = Limit of Quantitation; ND = Not Detected.

Total THC Measurement of Uncertainty: ± 0.040%  
 Total CBD Measurement of Uncertainty: ± 2.000%  
 THCO potency analysis does not designate quantitative specificity of Δ-8-THCO and Δ-9-THCO isomers

Sample Density: 0.929 g ;



New Bloom Labs  
 6121 Heritage Park Drive, A500  
 Chattanooga, TN 37416  
 (844) 837-8223  
 TN DEA#: RN0563975

*Natalie Siracusa*  
 Natalie Siracusa  
 Laboratory Director

New Bloom Labs  
 10606 Shady Trail, 105  
 Dallas, TX 75520  
 (844) 837-8223  
 TX DEA#: RN0594653

Powered by  
 reLIMS  
 info@relims.com