

CAROLINA DREAM

PRODUCT CHAIN OF CUSTODY REPORT

Product Batch **1500mg Full Spectrum Tincture**
Info at a Glance: **BATCH #TRND6 | CBD: 1479.072mg | THC: 0.16%**



CULTIVAR

Straight Arrow Hemp Farms | Travelers Rest, South Carolina

Planted:
22 May, 2019

Harvested:
18 September, 2019

Tested:
25 October, 2019

[Click Here for Certificate of Analysis](#)



PROCESSOR

Sycamore BioPharma | West Columbia, South Carolina

Biomass Received:
2 November, 2019

Processed:
13 November, 2019

Completed & Stored:
15 November, 2019

[Click Here for Certificate of Analysis](#)



PRODUCT MANUFACTURED

Carolina Dream Distribution, Inc.
Charleston, South Carolina

Distillate Received:
22 May, 2022

Manufactured:
10 September, 2022

Packaged:
7 August, 2022

[Click Here for Certificate of Analysis](#)

TRANSPARENCY, FROM SEED TO RECEIPT

  @thecarolinadream | www.carolinadream.com

Certificate of Analysis

Report Date November 01, 2019

Company: Straight Arrow Hemp

Project: Straight Arrow Hemp

GEL SDG: 494349

Contact: Tom McNeil

GEL Sample ID: 494349001

Matrix: Vegetation

Client Sample ID: Sample A - Small Bag

Collect Date: 21-OCT-19 08:00

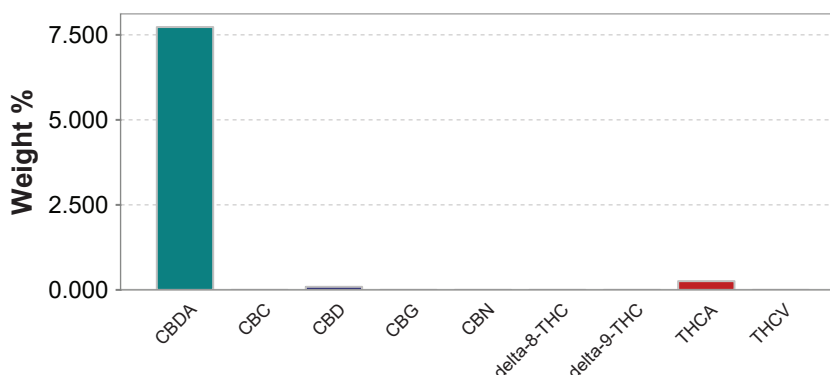
Receive Date: 25-OCT-19 16:55



HPLC Cannabinoids

Analyte	Result	Weight %	Analysis Date	Batch	Dilution	Method
CBDA	77.3 mg/g	7.73 %	26-Oct-19 18:15	1931941	400	GEL SOP GL-OA -E-078
CBC	< 0.253 mg/g	< 0.0253 %	26-Oct-19 18:27	1931941	20	GEL SOP GL-OA -E-078
CBD	0.9 mg/g	0.09 %				
CBG	< 0.253 mg/g	< 0.0253 %				
CBN	< 0.253 mg/g	< 0.0253 %				
delta-8-THC	< 0.253 mg/g	< 0.0253 %				
delta-9-THC	< 0.253 mg/g	< 0.0253 %				
THCA	2.57 mg/g	0.257 %				
THCV	< 0.253 mg/g	< 0.0253 %				
Total Potential CBD (CBD + CBDA x 0.877)		6.87 %	28-Oct-19 11:30	1931942	1	GEL SOP GL-OA -E-078
Total Potential THC (d9-THC + d9-THCA x 0.877)		0.225 %				

Cannabinoid Profile



Certificate #2567.1

Test results for NELAP or ISO 17025 accredited results are verified to meet the requirements of those standards, with any exceptions noted. The results reported relate only to the items tested and to the sample as received by the laboratory. These results may not be reproduced, except as full reports, without approval by the laboratory. Copies of GEL's accreditations and certifications can be found on our website at www.gel.com.





Certificate of Analysis

Report Date November 01, 2019

Company: Straight Arrow Hemp

Project: Straight Arrow Hemp

GEL SDG: 494349

Contact: Tom McNeil

GEL Sample ID: 494349001

Matrix: Vegetation

Client Sample ID: Sample A - Small Bag

Collect Date: 21-OCT-19 08:00

Receive Date: 25-OCT-19 16:55



Mercury Analysis-CVAA

Analyte	Result	Weight %	Analysis Date	Batch	Dilution	Method
Mercury	< 60.0 ug/kg		29-Oct-19 11:42	1932090	1	SW846 7471B
Arsenic	< 2950 ug/kg		29-Oct-19 12:10	1932110	1	SW846 3050B/6010D
Cadmium	< 491 ug/kg					
Lead	< 1960 ug/kg					



Certificate #2567.1

Test results for NELAP or ISO 17025 accredited results are verified to meet the requirements of those standards, with any exceptions noted. The results reported relate only to the items tested and to the sample as received by the laboratory. These results may not be reproduced, except as full reports, without approval by the laboratory. Copies of GEL's accreditations and certifications can be found on our website at www.gel.com.



Prepared for:
Zitro Farms, Inc

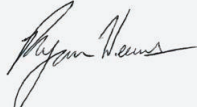
 8465 Chisolm Plantation Rd.
 Edisto Island, SC USA 29438

Sycomre BioPharma CDB Disollete

Batch ID or Lot Number: 1-20	Test: Potency	Reported: 13Apr2022	USDA License: N/A
Matrix: Concentrate	Test ID: T000202280	Started: 12Apr2022	Sampler ID: N/A
	Method(s): TM14 (HPLC-DAD): Potency - Full Spectrum Analysis, 0.3% THC	Received: 12Apr2022	Status: N/A

Cannabinoids

	LOD (%)	LOQ (%)	Result (%)	Result (mg/g)	Notes
Cannabichromene (CBC)	0.057	0.193	3.118	31.18	
Cannabichromenic Acid (CBCA)	0.052	0.177	0.097*	0.97*	
Cannabidiol (CBD)	0.153	0.474	75.527	755.27	
Cannabidiolic Acid (CBDA)	0.157	0.486	3.060	30.60	
Cannabidivarin (CBDV)	0.036	0.112	0.480	4.80	
Cannabidivarinic Acid (CBDVA)	0.065	0.203	ND	ND	
Cannabigerol (CBG)	0.032	0.110	1.153	11.53	
Cannabigerolic Acid (CBGA)	0.135	0.458	ND	ND	
Cannabinol (CBN)	0.042	0.143	0.232	2.32	
Cannabinolic Acid (CBNA)	0.092	0.312	ND	ND	
Delta 8-Tetrahydrocannabinol (Delta 8-THC)	0.161	0.546	0.23*	2.3*	
Delta 9-Tetrahydrocannabinol (Delta 9-THC)	0.003	0.010	3.053	30.53	
Delta 9-Tetrahydrocannabinolic Acid (THCA-A)	0.003	0.009	ND	ND	
Tetrahydrocannabivarin (THCV)	0.029	0.100	ND	ND	
Tetrahydrocannabivarinic Acid (THCVA)	0.114	0.387	ND	ND	
Total Cannabinoids			86.950	869.50	
Total Potential THC			3.053	30.53	
Total Potential CBD			78.211	782.11	

Final Approval


 Ryan Weems
 13Apr2022
 05:32:00 PM MDT

PREPARED BY / DATE



 Daniel Weidensaul
 13Apr2022
 05:41:00 PM MDT

APPROVED BY / DATE


<https://results.botanacor.com/api/v1/coas/uuid/04a5441e-e510-4718-860b-e63e3f74c25f>
Definitions

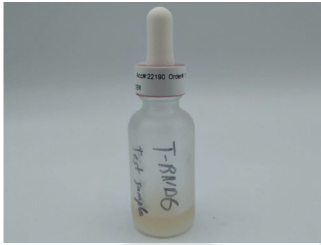
% = % (w/w) = Percent (weight of analyte / weight of product). ND = None Detected (defined by dynamic range of the method).

Total Potential Delta 9-THC or CBD is calculated to take into account the loss of a carboxyl group during decarboxylation step, using the following formulas: Total Potential Delta 9-THC = Delta 9-THC + (Delta 9-THCa *(0.877)) and Total CBD = CBD + (CBDA *(0.877)).

Carolina Dream
 8465 Chisolm Plantation Rd.
 Edisto Island, SC 29438
 cody@carolinadream.com
 843-532-2016

Sample: 07-12-2022-22190
 Sample Received: 07/12/2022;
 Report Created: 07/13/2022; Expires: 07/13/2023

T-RND6
 Ingestible, Tincture



0.166%
 Total THC

0.166%
 Δ-9 THC

5.386 %
 Total Cannabinoids

4.934 %
 Total CBD

Cannabinoids

(Testing Method: HPLC, CON-P-3000)
 Date Tested: 07/12/2022

Complete

Analyte	LOD	LOQ	Mass	Mass	
	%	%	%	mg/g	
Δ-8-Tetrahydrocannabinol (Δ-8 THC)	0.0093	0.0140	0.014	0.143	<div style="width: 10%;"></div>
Δ-9-Tetrahydrocannabinol (Δ-9 THC)	0.0093	0.0140	0.166	1.660	<div style="width: 15%;"></div>
Δ-9-Tetrahydrocannabinolic Acid (THCA-A)	0.0093	0.0140	ND	ND	<div style="width: 0%;"></div>
Δ-9-Tetrahydrocannabinophorol (Δ-9-THCP)	0.0093	0.0140	ND	ND	<div style="width: 0%;"></div>
Δ-9-Tetrahydrocannabivarin (Δ-9-THCV)	0.0093	0.0140	ND	ND	<div style="width: 0%;"></div>
Δ-9-Tetrahydrocannabivarinic Acid (Δ-9-THCVA)	0.0093	0.0140	ND	ND	<div style="width: 0%;"></div>
R-Δ-10-Tetrahydrocannabinol (R-Δ-10-THC)	0.0093	0.0140	ND	ND	<div style="width: 0%;"></div>
S-Δ-10-Tetrahydrocannabinol (S-Δ-10-THC)	0.0093	0.0140	ND	ND	<div style="width: 0%;"></div>
9R-Hexahydrocannabinol (9R-HHC)	0.0093	0.0140	ND	ND	<div style="width: 0%;"></div>
9S-Hexahydrocannabinol (9S-HHC)	0.0093	0.0140	ND	ND	<div style="width: 0%;"></div>
Tetrahydrocannabinol Acetate (THCO)	0.0093	0.0140	ND	ND	<div style="width: 0%;"></div>
Cannabidivarin (CBDV)	0.0093	0.0140	0.023	0.229	<div style="width: 5%;"></div>
Cannabidivarinic Acid (CBDVA)	0.0093	0.0140	ND	ND	<div style="width: 0%;"></div>
Cannabidiol (CBD)	0.0093	0.0140	4.771	47.712	<div style="width: 45%;"></div>
Cannabidiolic Acid (CBDA)	0.0093	0.0140	0.186	1.857	<div style="width: 12%;"></div>
Cannabigerol (CBG)	0.0093	0.0140	0.042	0.420	<div style="width: 3%;"></div>
Cannabigerolic Acid (CBGA)	0.0093	0.0140	ND	ND	<div style="width: 0%;"></div>
Cannabinol (CBN)	0.0093	0.0140	<LOQ	<LOQ	<div style="width: 0%;"></div>
Cannabinolic Acid (CBNA)	0.0093	0.0140	ND	ND	<div style="width: 0%;"></div>
Cannabichromene (CBC)	0.0093	0.0140	0.184	1.844	<div style="width: 12%;"></div>
Cannabichromenic Acid (CBCA)	0.0093	0.0140	ND	ND	<div style="width: 0%;"></div>
Total			5.386	53.865	

Total THC = THCa * 0.877 + Δ9-THC; Total CBD = CBDa * 0.877 + CBD; LOQ = Limit of Quantitation; ND = Not Detected.

Total THC Measurement of Uncertainty: ± 0.040%
 Total CBD Measurement of Uncertainty: ± 2.000%
 THCO potency analysis does not designate quantitative specificity of Δ-8-THCO and Δ-9-THCO isomers



New Bloom Labs
 6121 Heritage Park Drive, A500
 Chattanooga, TN 37416
 (844) 837-8223
 TN DEA#: RN0563975

Natalie Siracusa
 Natalie Siracusa
 Laboratory Director

New Bloom Labs
 10606 Shady Trail, 105
 Dallas, TX 75520
 (844) 837-8223
 TX DEA#: RN0594653

Powered by
 reLIMS
 info@relims.com