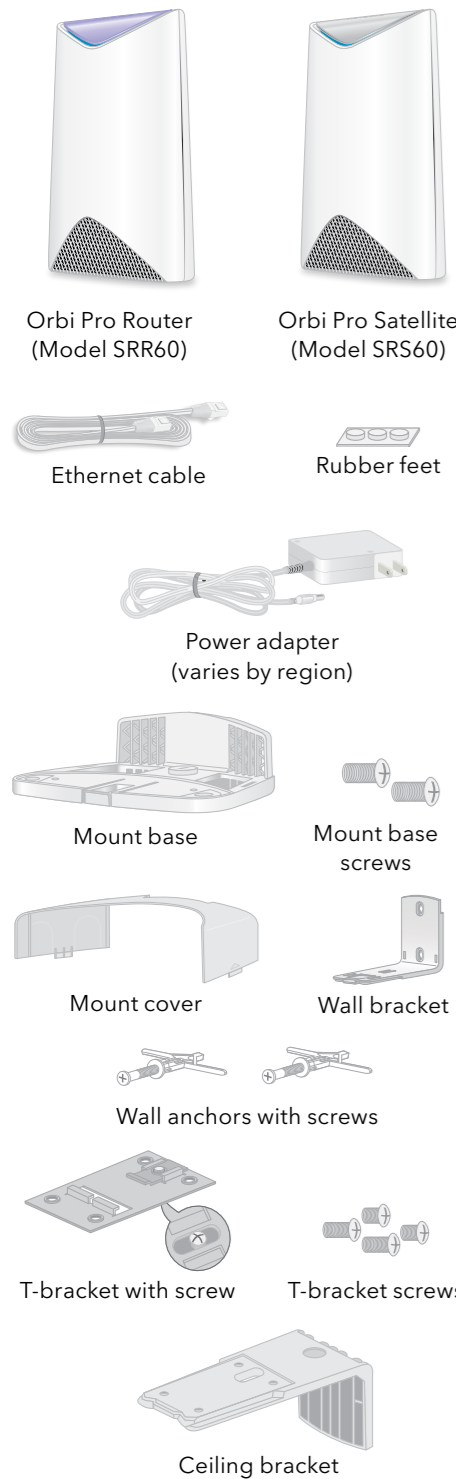




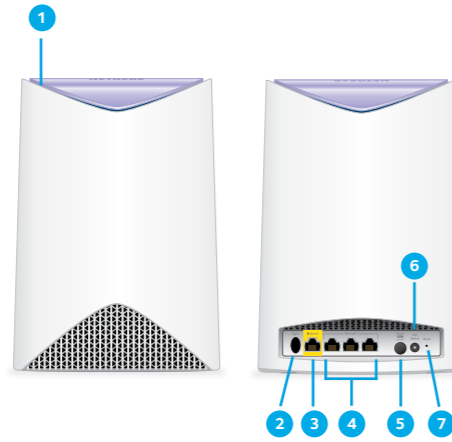
## Package Contents

**Note:** The number of each item that comes in your package depends on which Orbi Pro kit you buy.

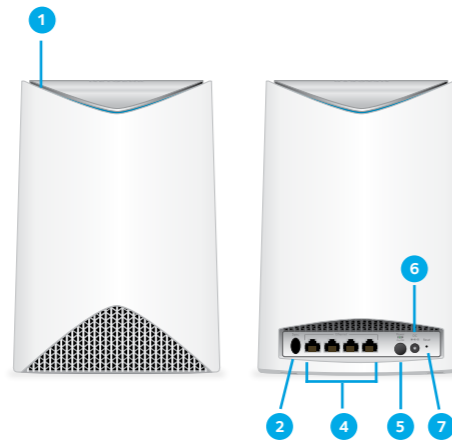


## Hardware Overview

### Orbi Pro Router



### Orbi Pro Satellite



- 1 Ring LED (not shown in image)
- 2 Sync button (also used for WPS connection)
- 3 Internet port (the Orbi Pro Satellite does not include an Internet port)
- 4 Ethernet ports
- 5 Power On/Off button and Power LED
- 6 DC Power connector
- 7 Reset button

## Attach the Mounting Base

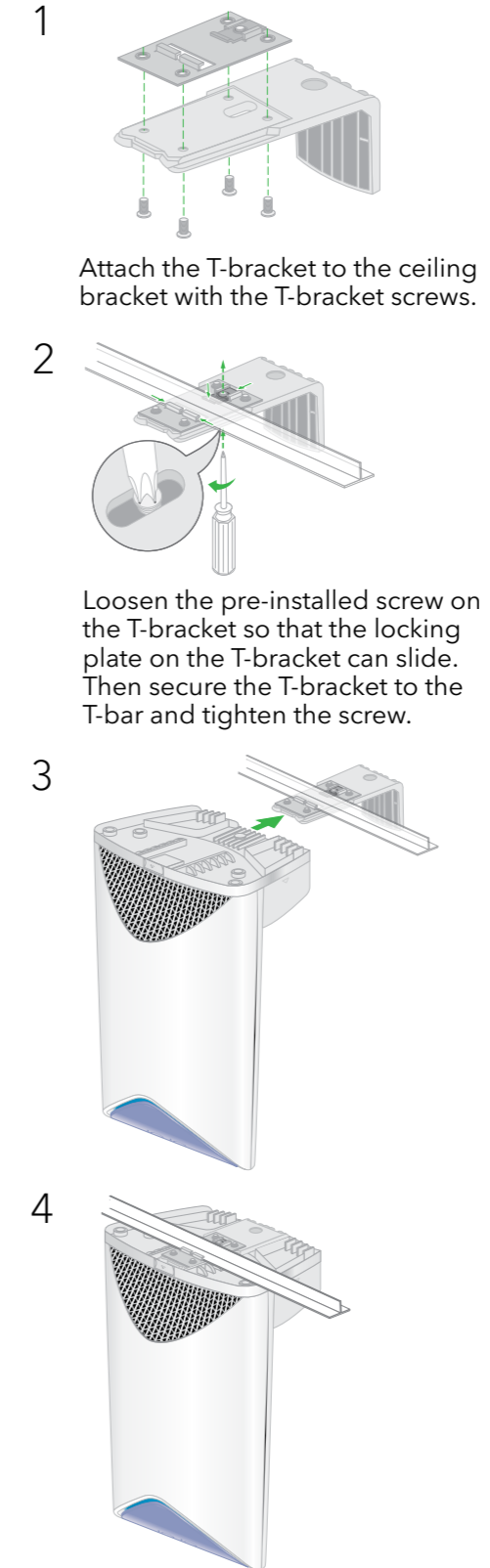
Before you can wall mount or ceiling mount your Orbi Pro router or satellite, you must attach the mount base and cover to your router or satellite.



## Wall-Mount Your Orbi Pro



## Ceiling-Mount Your Orbi Pro



# Set Up Your Orbi Pro Router and Satellites

To set up your router and satellites, you can use the NETGEAR Insight app or the Orbi Pro web interface.

## NETGEAR Insight App Setup

You can use the NETGEAR Insight app to sync your satellites with your Orbi Pro router. For more information about the app, visit <https://www.netgear.com/insight/>.



1. Download the NETGEAR Insight app from the Apple App Store or Google Play Store.



2. Launch the NETGEAR Insight app on your mobile device and follow the prompts.

## Orbi Pro Web Interface Setup

1. Unplug your modem, remove and reinsert the backup battery if it uses one, and plug the modem back in.
2. Use an Ethernet cable to connect your modem to the yellow Internet port on your Orbi Pro router.

**Note:** If you want to connect your Orbi Pro router to an existing gateway, we recommend that you turn off your existing gateway's WiFi.

3. Connect your Orbi Pro router to a power source.



The Power LED on the back of the Orbi Pro router lights green. If the Power LED does not light, press the **Power On/Off** button.

4. Wait for the Orbi Pro router's ring LED to light white.
5. Place your Orbi Pro satellite, plug it in, and wait for the satellite's Power LED to light green.
6. Press the **Sync** button on the back of your satellite, and within two minutes, press the **Sync** button on the back of your router.  
When the satellite connects to the router, the satellite's ring LED lights blue. If the satellite's ring LED lights amber or magenta, move the satellite closer to the router and try again. For more information, see [Orbi Pro Satellite Sync Information](#).  
The Orbi Pro router's ring LED turns off after the setup is complete.
7. Repeat Steps 5 and 6 to connect your other Orbi Pro satellites.
8. Connect your computer or mobile device to the Orbi Pro router or satellite with an Ethernet or WiFi connection:

- **Ethernet.** Use an Ethernet cable to connect your computer to the Orbi Pro router or satellite.
- **WiFi.** Use the preassigned WiFi network name (SSID) and password on the label of the Orbi Pro router or satellite to connect to the Orbi WiFi network.



9. Launch a web browser and visit [orbilogin.com](http://orbilogin.com).
10. If a login window opens, enter the user name and password.  
The user name is **admin** and the default password is **password**.
11. Follow the onscreen instructions.  
The Orbi Pro router's ring LED turns off after the setup is complete.

## Orbi Pro Satellite Sync Information

The Orbi Pro satellite's ring LED lights white while the satellite attempts to sync with the Orbi Pro router. After the Orbi Pro satellite's ring LED lights white, it lights one of the following colors for about three minutes and then turns off:

- **Blue**  
The connection between the Orbi Pro router and Orbi Pro satellite is good.
- **Amber**  
The connection between the Orbi Pro router and Orbi Pro satellite is fair. Consider moving the Orbi Pro satellite closer to the Orbi Pro router.
- **Magenta**  
The Orbi Pro satellite was unable to connect to the Orbi Pro router. Move the Orbi Pro satellite closer to the Orbi Pro router.

**Note:** If the ring LED still lights magenta after about one minute, press the **Sync** button on the back of the Orbi Pro router and on the back of the Orbi Pro satellite. When the Orbi Pro satellite syncs with the Orbi Pro router, the satellite's ring LED lights white then lights blue to indicate a good connection, and then turns off.

## Support

Thank you for purchasing this NETGEAR product. You can visit <https://www.netgear.com/support/> to register your product, get help, access the latest downloads and user manuals, and join our community. We recommend that you use only official NETGEAR support resources.

Si ce produit est vendu au Canada, vous pouvez accéder à ce document en français canadien à <https://www.netgear.com/support/download/>.

(If this product is sold in Canada, you can access this document in Canadian French at <https://www.netgear.com/support/download/>.)

For regulatory compliance information including the EU Declaration of Conformity, visit <https://www.netgear.com/about/regulatory/>.

See the regulatory compliance document before connecting the power supply.

**NETGEAR, Inc.**  
350 East Plumeria Drive  
San Jose, CA 95134, USA

January 2019

**NETGEAR INTL LTD**  
Building 3, University Technology Centre  
Curraheen Road, Cork, Ireland

© NETGEAR, Inc., NETGEAR and the NETGEAR Logo are trademarks of NETGEAR, Inc. Any non-NETGEAR trademarks are used for reference purposes only.