

# Installation

## ReadyNAS OS 6 Desktop Storage



**NETGEAR®**

# Contents

Package Contents .....	3
Basic Setup.....	4
Reformat Disks.....	9
Additional Information .....	12

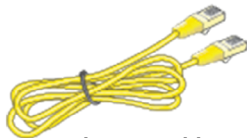
# Package Contents



**ReadyNAS system**



**Bluetooth adapter  
(only some models)  
See the hardware manual for  
your system for installation  
and use**



**Ethernet cable**



**Power adapter and power cord  
(varies by model)**

**Important:** Read all safety warnings in the hardware manual for your system before connecting the system to the power supply.

# Basic Setup

After you follow these instructions, your ReadyNAS is ready to use in a production environment. Setup takes approximately 15 minutes.

## ➤ To set up your storage system:

1. Install all available disks that you want to use in your ReadyNAS system.

**Note:** If you are using previously formatted disks that contain data, you must reformat these disks before continuing. See *Reformat Disks* on page 9.

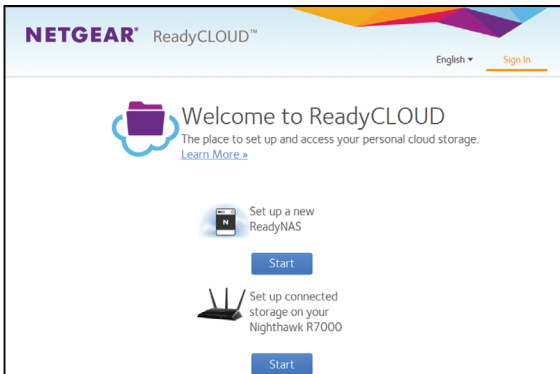
For a list of supported disks, see the Hardware Compatibility List at [netgear.com/readynas-hcl](http://netgear.com/readynas-hcl).

For information about installing disks, see the hardware manual for your system or visit <https://www.youtube.com/watch?v=hLiu0VeXd-Y>.

2. Place your system in a location that provides adequate ventilation. High-capacity disks can produce considerable heat. It is important to ensure that the fan exhausts are unobstructed.

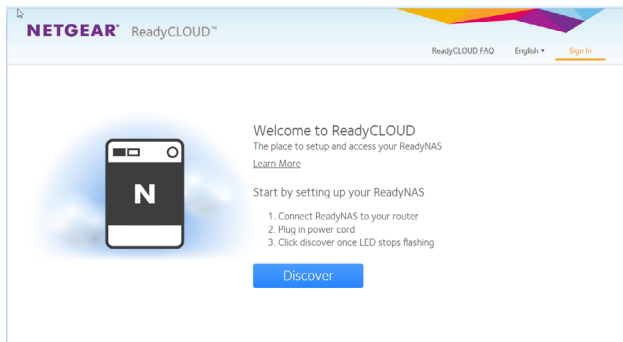
For a complete list of placement considerations, see the hardware manual for your system.

3. Connect the power adapter to the power cord.
4. Connect the power adapter to the back of the system and plug the power cord into a wall outlet or power strip.
5. Use an Ethernet cable to connect an Ethernet port on the storage system to your network.
6. If necessary, press the **Power** button to turn on the system.
7. Wait for the Power LED to turn solid blue or for the status display screen to display the system's IP address.
8. Visit [readycloud.netgear.com](http://readycloud.netgear.com) on a computer that uses the same local area network (LAN) and Internet connection as your ReadyNAS system.



**Note:** If your computer cannot access the Internet, download and run the RAIDar utility instead. Download RAIDar to a computer connected to the Internet and transfer the downloaded file to the computer on the same LAN as your ReadyNAS system. You can find the latest version of RAIDar at [netgear.com/raidar](http://netgear.com/raidar).

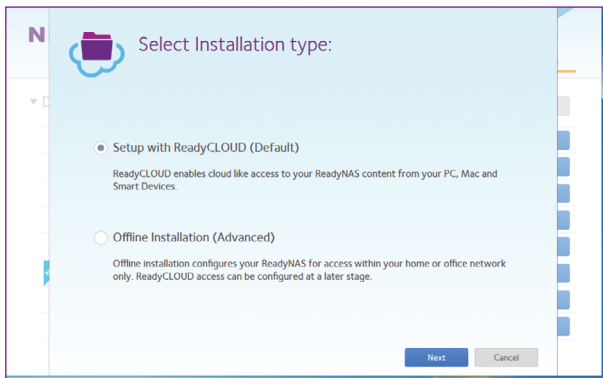
9.



10. Click the **Discover** button.

ReadyCLOUD detects your ReadyNAS system on the network and displays the New ReadyNAS Discovered page.

11. Click the **Setup** button.



12. Select the mode that you want to use to set up your system:

- **Option 1.** Select the **Setup with ReadyCLOUD (Default)** radio button and do the following:
  - a. Complete the **Create a MyNETGEAR Account** fields and click the **Next** button, or click the **Sign in to an Existing Account** button and sign in to your account.
  - b. Follow the prompts to configure your ReadyNAS system.

- **Option 2.** Select the **Offline Installation (Advanced)**:

- a. Enter **admin** for the user name, enter **password** for the password, and click the **OK** button.

**Note:** You can change these credentials when you configure your system. We recommend that you change your password as soon as possible.

The ReadyNAS local admin page displays in your browser and launches a setup wizard.

- b. Follow the prompts of the setup wizard to configure your ReadyNAS system.

The setup process is complete. You can begin using your ReadyNAS storage system.



## Reformat Disks

If you are using previously formatted disks that contain data, you must reformat the disks before you can use them with your ReadyNAS system.

*WARNING: This process erases all data and reformats all disks into a single X-RAID volume. If you want to preserve the data on the disks, you must back up the data to an external drive before using the disks in your ReadyNAS storage system.*

Note that this procedure returns the storage system to factory default condition and is not necessary if you are adding or replacing individual disks, even if the disks were previously formatted. See the ReadyNAS OS manual, available at [netgear.com/support/product/ReadyNAS\\_OS\\_6](http://netgear.com/support/product/ReadyNAS_OS_6), for information about formatted disks and already configured systems.

### ➤ **To reformat previously formatted disks:**

1. If your system is powered on, gracefully power off the system.  
See *Additional Information* on page 12.

2. Install the previously formatted disks.

For a list of supported disks, see the Hardware Compatibility List at [netgear.com/readynas-hcl](http://netgear.com/readynas-hcl).

For information about installing disks, see the hardware manual for your system.

3. Using a straightened paper clip, press and hold the **Reset** button.
4. Press the **Power** button.  
The system powers on.
5. Continue pressing the **Reset** button until the system enters boot mode:
  - If you are using a 2-bay storage system, the Power, Disk 1, Disk 2, and Backup LEDs light when the system is in boot mode.
  - If you are using a 4-bay or 6-bay storage system, the status display screen indicates that the system is in boot mode.
6. Select the factory default option from the boot menu:
  - If you are using a 2-bay storage system, do the following:
    - a. Scroll through the boot menu options by pressing the **Backup** button.
    - b. When only the Disk 1 LED is lit, press and release the **Reset** button.
  - If you are using a 4-bay storage system, do the following:
    - a. Scroll through the boot menu options by pressing the **Backup** button.

- b. When the status display screen shows the factory default option, press and release the **Reset** button.
- If you are using a 6-bay storage system:
  - a. Scroll through the boot menu options using the arrows on the touch pad.
  - b. When the status display screen shows the factory default option, press the **OK** button.

The system initiates a short disk test that takes two to five minutes. At the end of the disk test, the factory default process starts.

The system returns to its factory default settings and reformats all installed disks for use with ReadyNAS OS 6.

When the factory default process is complete, the reformatted disks are ready to use with your system.

## Additional Information

To help keep your storage system healthy and avoid the risk of data loss, follow these rules of usage:

- Never replace more than one disk at a time while the system is powered on.
- If you must power off your system, power it off gracefully, when possible.

➤ **To gracefully power off a 2-bay storage system:**

Press the **Power** button twice.

➤ **To gracefully power off a 4-bay or 6-bay storage system:**

Press the **Power** button three times.

For more information about setting up, configuring, and using your system, see the software and hardware manuals for your system.

Links to these manuals are available at [netgear.com/support/product/ReadyNAS\\_OS\\_6](https://netgear.com/support/product/ReadyNAS_OS_6) or through a link in the product's user interface.







## Support

Thank you for purchasing this NETGEAR product. You can visit [www.netgear.com/support](http://www.netgear.com/support) to register your product, get help, access the latest downloads and user manuals, and join our community. We recommend that you use only official NETGEAR support resources.

## Trademarks

© NETGEAR, Inc., NETGEAR and the NETGEAR Logo are trademarks of NETGEAR, Inc. Any non-NETGEAR trademarks are used for reference purposes only.

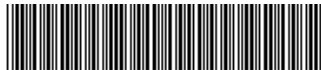
## Compliance

For the current EU Declaration of Conformity, visit [http://support.netgear.com/app/answers/detail/a\\_id/11621/](http://support.netgear.com/app/answers/detail/a_id/11621/).

For regulatory compliance information, visit <http://www.netgear.com/about/regulatory/>.

See the regulatory compliance document before connecting the power supply.

**CE** NETGEAR INTL LTD  
Building 3, University Technology Centre  
Curraheen Road, Cork, Ireland



201-16958-09  
June 2016

**NETGEAR, Inc.**  
350 East Plumeria Drive  
San Jose, CA 95134, USA