

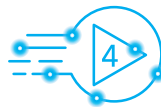
Leading the new era of WiFi 6

- Up to 1.5X better performance than a Wi-Fi 5 (802.11ac) extender
- OFDMA provides more WiFi for more devices
- 1.5GHz quad-core processor enables smooth 4K UHD streaming & gaming
- Works with your existing WiFi



Overview

The NETGEAR AX1800 4-Stream WiFi Mesh Extender give you up to 1.5X better performance than a Wi-Fi 5 (802.11ac) extender. 4-Stream WiFi with up to 1.8Gbps[†] provides fast wireless speeds. It works with your existing WiFi router & is ideal for 4K UHD streaming & gaming. Get powerful WiFi where you want it.



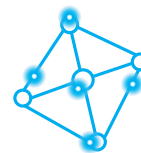
4-Stream WiFi 6

Upgraded WiFi that's up to 1.5X the performance & capacity of 11ac.



Increased Coverage for Your Smart Home

Strong WiFi signals reach every corner of your smart home.



One WiFi Name & Smart Roaming

Seamless mesh WiFi throughout the home for all your devices.

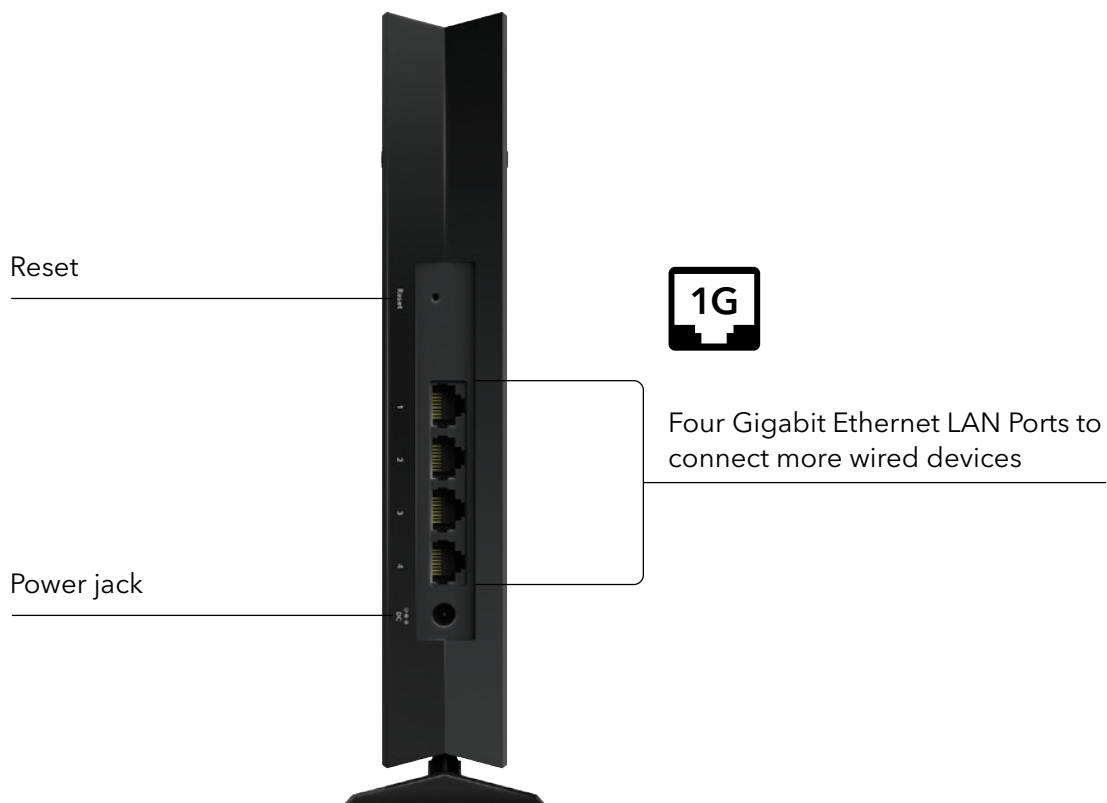
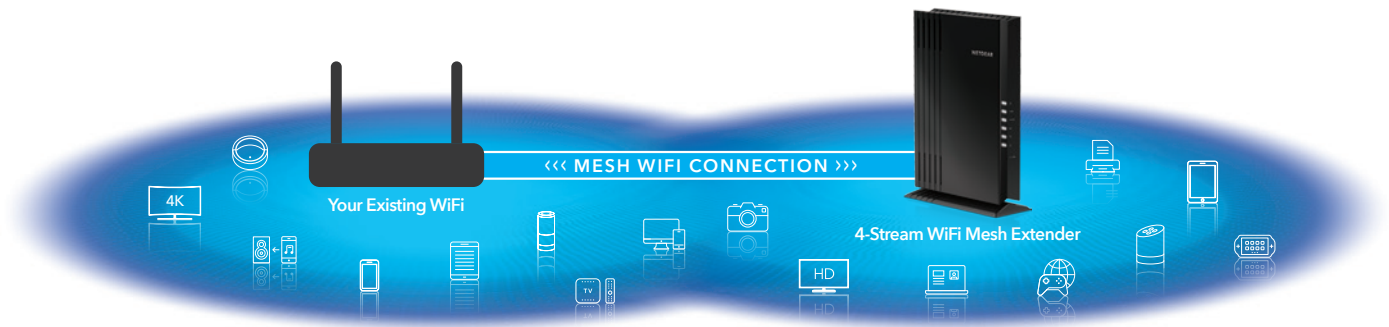


Ultra-fast WiFi Speeds up to 1.8Gbps

Smoother 4K HD streaming & gaming.

AX1800 4-Stream WiFi Mesh Extender

Create a Mesh WiFi System using the WiFi you already have



Nighthawk App

The NETGEAR Nighthawk® App makes it easy to set up your extender and get more out of your WiFi. With the app, you can install your extender in a few steps—just connect your mobile device to the network and the app will walk you through the rest. Once set up, you can use the intuitive dashboard to manage your network.

- Network Management—Easily monitor and manage your home network
- Quick Setup—Get connected in just minutes
- Get it at nighthawk-app.com



Package Contents

- AX1800 4-Stream WiFi Mesh Extender (EAX20)
- Power adapter
- Quick Start Guide

Physical Specifications

- Dimensions: 9.5 x 6.7 x 2.5 in (241.7 x 169.5 x 63.4 mm)
- Weight: 1.1 lb (504.4 g)

Warranty

- www.netgear.com/warranty
- Extend your warranty & technical support within 90 days of product purchase [US only]. Visit: prosupport.netgear.com/home

Support

- 90-day complimentary technical support*

Ease of Use

- Nighthawk® App—Easily set up your extender and get more out of your WiFi
- Wi-Fi 6 supports all current WiFi devices
 - Backward compatible with Wi-Fi 5, Wi-Fi 4 and earlier generation WiFi devices
- Push & Connect using WPS¹

System Requirements

- 2.4 and/or 5GHz 802.11 a/b/g/n/ac /ax WiFi router or gateway
- Microsoft® Internet Explorer® 8.0, Firefox® 20 or Safari® 5.1 or Google Chrome® 25.0 browsers or higher

Security & Standards

- AX1800[†] WiFi
 - Band 1: 0.6Gbps @ 2.4GHz - 1024-QAM
 - Band 2: 1.2Gbps @ 5GHz - 1024-QAM
- IEEE® 802.11b/g/n/ax 2.4GHz
- IEEE® 802.11a/n/ac/ax 5GHz
- IEEE® 802.11k
- Two (2) internal antennas
- Four (4) 10/100/1000 Ethernet ports with auto-sensing technology
- Standards-based WiFi Security (802.11i, 128-bit AES encryption with PSK)

This product comes with a limited warranty that is valid only if purchased from a NETGEAR authorized reseller.

* 90-day complimentary technical support following purchase from a NETGEAR authorized reseller.

¹ Works with devices supporting WPS.

[§] Requires compatible AX clients with DL-OFDMA and UL-OFDMA support.

[†] Comparable with an AC1200 WiFi Range Extender.

^{††} Performance compared to IEEE 802.11ac wireless technology.

[‡] Maximum wireless signal rate derived from IEEE® standard 802.11 specifications. Actual data throughput and data over distance will vary. Network conditions and environmental factors, including volume of network traffic, building material and construction, and network overhead, result in lower actual data throughput rate and wireless coverage.

Data throughput, signal range, and wireless coverage per sq. ft. are not guaranteed and may vary due to differences in operating environments of wireless networks, including without limitation building materials and wireless interference. Specifications are subject to change without notice.

The product may not be compatible with routers or gateways with firmware that has been altered, is based on open source programs, or is non-standard or outdated.

For indoor use only.

NETGEAR, the NETGEAR Logo, and Nighthawk are trademarks of NETGEAR, Inc. Mac, Mac OS, the Mac logo, and iPhone are trademarks of Apple Inc. App Store is a service mark of Apple Inc., registered in the U.S. and other countries. Google Play and the Google Play logo are trademarks of Google LLC. Any other trademarks mentioned herein are for reference purposes only. ©2020 NETGEAR, Inc.

