

# INNER DEMON

MOTORSPO RTS

POWERED BY  
HEATERCRAFT



**Polaris General XP Cab Heater / Defroster  
Installation Instructions 28821316**

# Heatercraft 2020+ Polaris General 1000 Deluxe Heater Kit

## Fits 2020+ 2 & 4 Seat Models

Works with 1000 W/ Factory Stereo & Subwoofer

### Installation Instructions

This heater unit installs on top of the driver's side 6 ½" Speaker

**Warning** - Never work on a hot vehicle, severe burns can occur.

**Warning** – Be aware of sharp edges.

The following instructions are intended for use on a Polaris General with a factory installed Rockford Fosgate stereo system with subwoofer. Modifications may need to be made if additional accessories have been installed.

1. Make sure vehicle is in park, lift the front of the vehicle and secure with jack-stands. Remove the driver's and passenger side tire/wheel. (this is optional, the heater can be installed with the wheels on. Removal does allow for additional room for installation.
2. Remove the front hood and then remove the 7 push pins on the upper dash panel. The upper dash panel can be removed by pulling back and lifting up to release the mounting tabs.
3. Locate the lower dash vent locations. They can be found on the left and right sides of the lower center dash. There is a factory dimple in the plastic that can be used as the vent center. Using a 2" hole saw drill out both left and right sides.  
(Image 1)
4. Snap the left and right vents into place. (Image 2)
5. Locate the supplied defrost vent templates, cut them out and place on upper dash. These can be taped to the upper dash panel and used as a guide to drill out the defrost vents using a 2" hole saw. (Image 3)
6. Insert and snap the left and right defrost vents into place.
7. Remove the Drivers side Fender to access the 3 bolts holding the driver's side 6 1/2" speaker pod.
8. Remove the driver's side speaker pod using a 10mm socket, unplug from the wiring harness and set aside.
9. Locate and cut out the rubber heater hose firewall template, tape to the firewall. This template will be used to drill the holes for the heater supply/return hoses. (Image 4)
10. Using a 1 3/8" hole saw, cut the two holes in the firewall for the heater hoses. (Image 4)
11. Insert the 2 supplied rubber grommets into the firewall. (Tip, soak the grommets in hot water to make more pliable) These will take a little work to get the grommet to sandwich the firewall equally on both sides of the. The heater core hoses will be installed later.
12. Locate the speaker relocation template, cut it out and tape to the fender well making sure to line it up to the 2 original speaker mounting holes. Locate the center of the new mounting holes and drill out using a 5/16" drill bit. These new holes will be used to relocate the speaker to make room for the heater core. (Image 5)
13. Locate and cut out the heater mounting bracket template and tape into place making sure to line up the holes on the template to the factory holes in the fender well. Drill the lower heater mounting bracket hole only with a 5/16" drill bit.  
(Image 6)
14. Mount heater to the bottom bracket only with a M6 x 20 bolt and fender washer, then drill a pilot hole through the top mounting bracket 1/8" or smaller from the inside. This will ensure you have the correct location for the upper mounting bracket. Remove heater, drill top mounting bracket hole with a 5/16" drill bit from outside fender well into the cab. (Image 7)
15. Take the supplied 3/4" rubber heater hose and cut into 2 lengths. Drivers side 19" and the passenger side 32". These lengths are only a suggestion and may need to be longer depending on accessories already installed on the General.
16. Starting with the 19" drivers side heater core hose, slide through the left grommet and attach to the heater core inlet making sure to place a #8 hose clamp on the hose as it is being passed through, next slide the 32" passenger side hose through the

- firewall and attach to the heater core making sure to place a #8 hose clamp on the hose as it is passed through. (image 8 & 9) Install both hose guards onto the hoses by spiraling it on. (Image 9a) (TIP) Spraying the hoses and fittings with windex will allow the hoses to slide through easily.
17. At this point you can tighten the heater core mounting screws and tighten the clamps on the heater core inlet and outlet. You may need to push the supply hoses back through the firewall a little to achieve the proper fit of the heater core.
  18. Time to cut in the T's to the coolant lines. Refer to the pictures (Image 10 & 11) to locate the best spots on the coolant lines to cut for the T's. Clamp off the coolant lines on either side of where the T will be located. This will ensure as little coolant loss as possible when cutting the lines. If clamps are not available, you can remove the coolant lines at the radiator and drain into a clean bucket for reuse later.
  19. Install T's into the cut ends of the radiator hoses and secure with #16 hose clamps.
  20. Attach rubber heater core supply hoses to T's and secure with #8 hose clamps. (Note- when routing hoses make sure to avoid moving parts: shocks, tires, radiator fan)
  21. Locate and cut the supplied 2" vent hoses in the following lengths: (Make sure the hose is stretched before cutting for the proper length)
    - a. Defrost vents Qty 4 @ 14"
    - b. Defrost supply hose Qty 2 @ 35"
  22. Zip tie vent hose to air wye's QTY 2 by attaching 2 of the 14" defrost vents to each of the air wye's. (Image 12)
  23. A) Route one of 35" vent hose across the top firewall frame and then down to the heater face. The defrost hose will fit between the left side of the heater and the steering column. Attach defrost vent hose to heater face (see photo defroster vent hose) (Image 12A) B) Route one of 35" vent hose across the top firewall frame and then down to the heater face. This vent hose will fit between the right side of the heater core and the steering column. Attach vent hose to heater face (see photo defroster vent hose). (Image 12B )
  24. Attach both driver and passenger side 2" vent hoses and route across the top of the firewall and then attach to the heater core. Drivers side attaches to the top right outlet and the passenger side attaches to the left outlet. Secure with zip ties. (Image 13)
  25. Reinstall the drivers side speaker pod using the new mounting holes drilled in step #12. (Image 14) This will be a very tight fit. The front mounting bolt on the speaker pod will not be reused.
  26. Use a sharp box cutter and cut the switch hole location in the dash. Follow the outside edge of the factory location for the switch to fit tightly.
  27. If using another switch location on the dash use the supplied sticker template as a cutting guide.
  28. Wire up the 2 speed rocker switch and push into place in the dash. Wiring should go as follows. (Image 15)
    - a. Position 1 – Yellow
    - b. Position 2 – Red
    - c. Position 3 – Orange
  29. Attach all three wires coming from the switch to the wires coming from the heater core. Black to black, orange to orange and yellow to yellow.
  30. At this point it is time to test the electrical connection and power up the heater. Install the supplied fuse into the fuse holder and then plug the power plug into the pulse bus bar under the hood. You can now check your connections by turning on the blower fan. (Image 16)
  31. Reassemble the vehicle.
  32. It is now time to bleed the system. To help in bleeding the system raise the front of the vehicle with a jack or park on an incline.
  33. Top off the radiator and fill the overflow tank to the cold/ low level mark. With the radiator cap off repeatedly squeeze the radiator tubes to purge some of the air out of the system.
  34. Start the vehicle and let run for 10-15 minutes watching the temp gauge on the dash. Once the vehicle gets up to temperature (185-190 degrees) the thermostat will open and the warm coolant will start flowing through heater core. At this point you can turn the blower on and check the heat. If heat does not come through the vents you still have air in the system. Turn off the vehicle, let cool and check the coolant level. More coolant may be necessary. The bleeding process can be expedited by driving the vehicle through several heat/cool cycles. If the heat still does not flow, loosening the clamp on the passenger side T will help release air out of the system. Once coolant flows freely from the loose clamp, tighten and repeat the bleeding process until you have continual heat.

Note: Check hose clamps after the first couple of rides.

Note: Check coolant levels after the first couple of rides.

Enjoy your new Inner Demon / Heatercraft heater kit.

## Tools Required

Drill

1/8" Drill bit

5/16" Drill Bit

5/16" Nut Driver

2.00" Hole Saw

1 3/8" Hole Saw

Flat Screwdriver

Philips Screwdriver

Tape

3/8 Socket wrench

10mm socket

Windex

Utility Knife

50/50 Antifreeze

Bucket/Catch Basin for Draining Coolant

Jack (optional)

Jack Stands (optional)

Hardware for Kit

Qty 8 6-32 Machine screws and washers

Qty 2 M6 x 16 Flanged Hex Screws

Qty 9 16" Zip Ties

Qty 1 Heater Core vent plug

Qty 4 #8 clamps

Qty 4 #16 clamps

Qty 1 Switch sticker

Qty 2 1 3/8" Rubber grommets

Qty 1 Pulse bar plug

Qty 1 Switch

Qty 1 Wye

1.

The factory heater vent locations can be found on the left and right side of the center console. The dimple indicates the center of the vent.

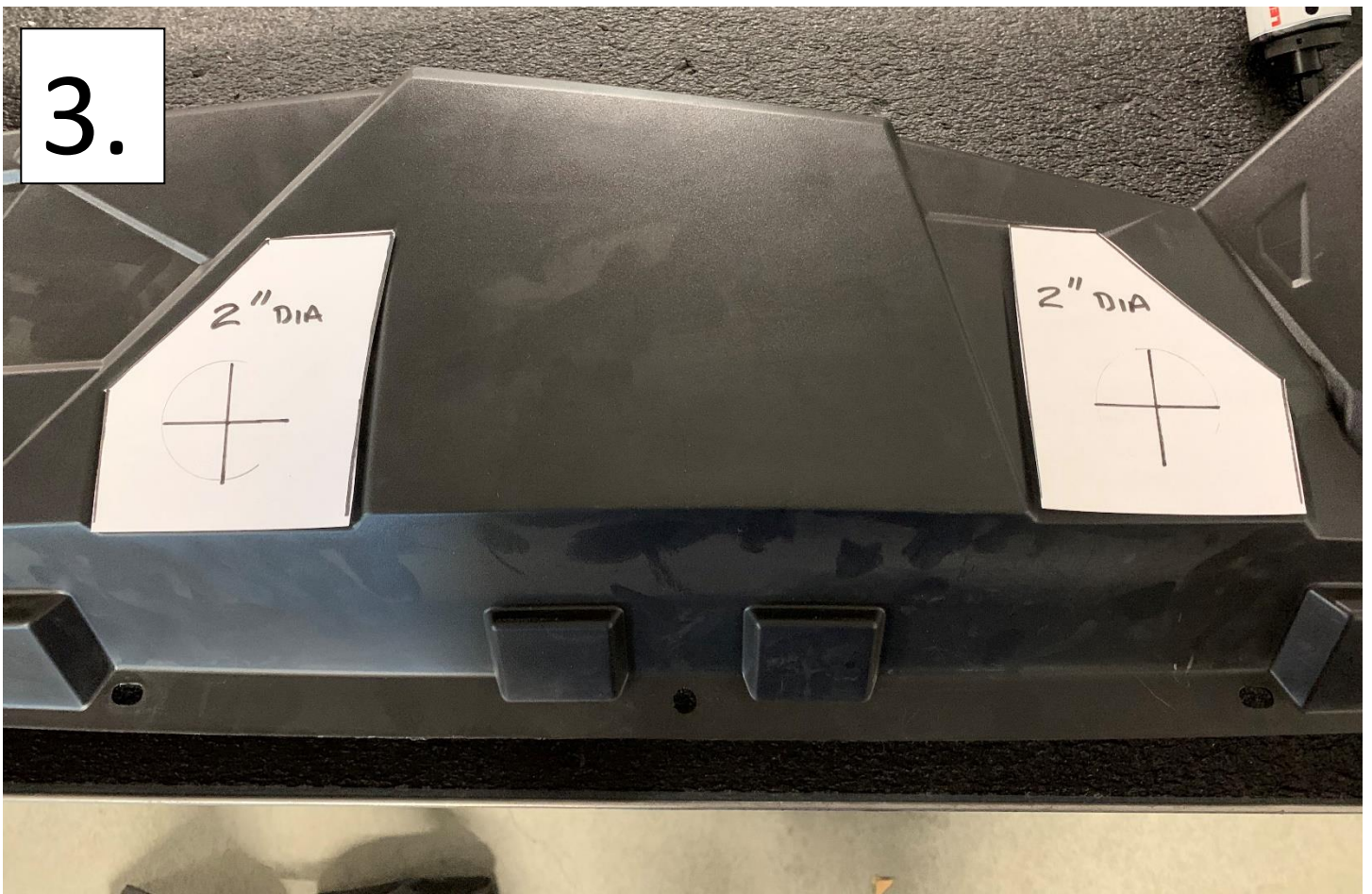


FACTORY CENTER  
DIMPLE FOR VENT

2.



3.





4.

Heater core supply and return holes through front firewall.



5.

OLD

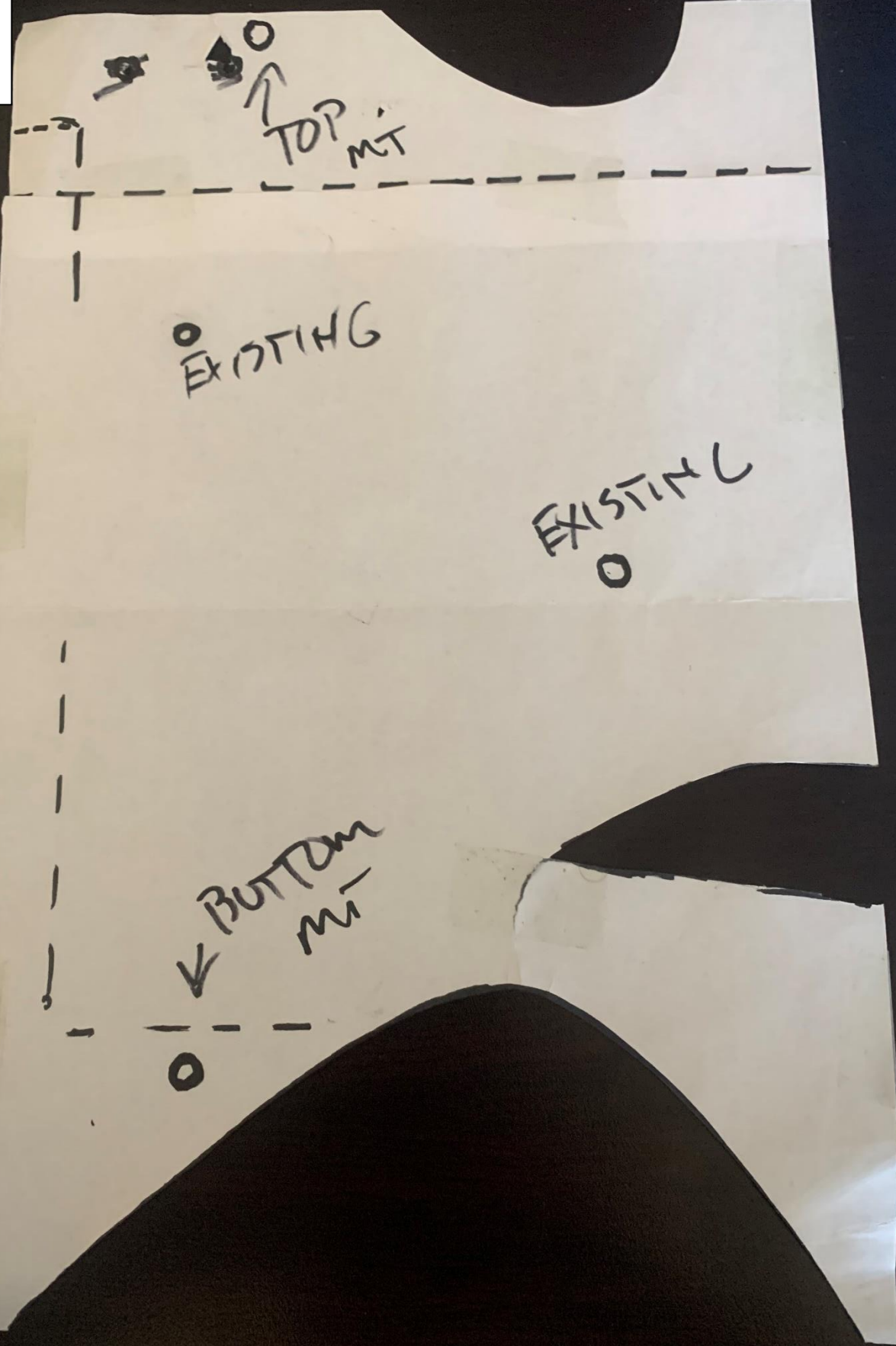
NEW

OLD

NEW

SPEAKER  
RELOCATION  
TEMPLATE

6.



7.



8.

Heater core supply and return.



Coolant supply and return from radiator.

9.

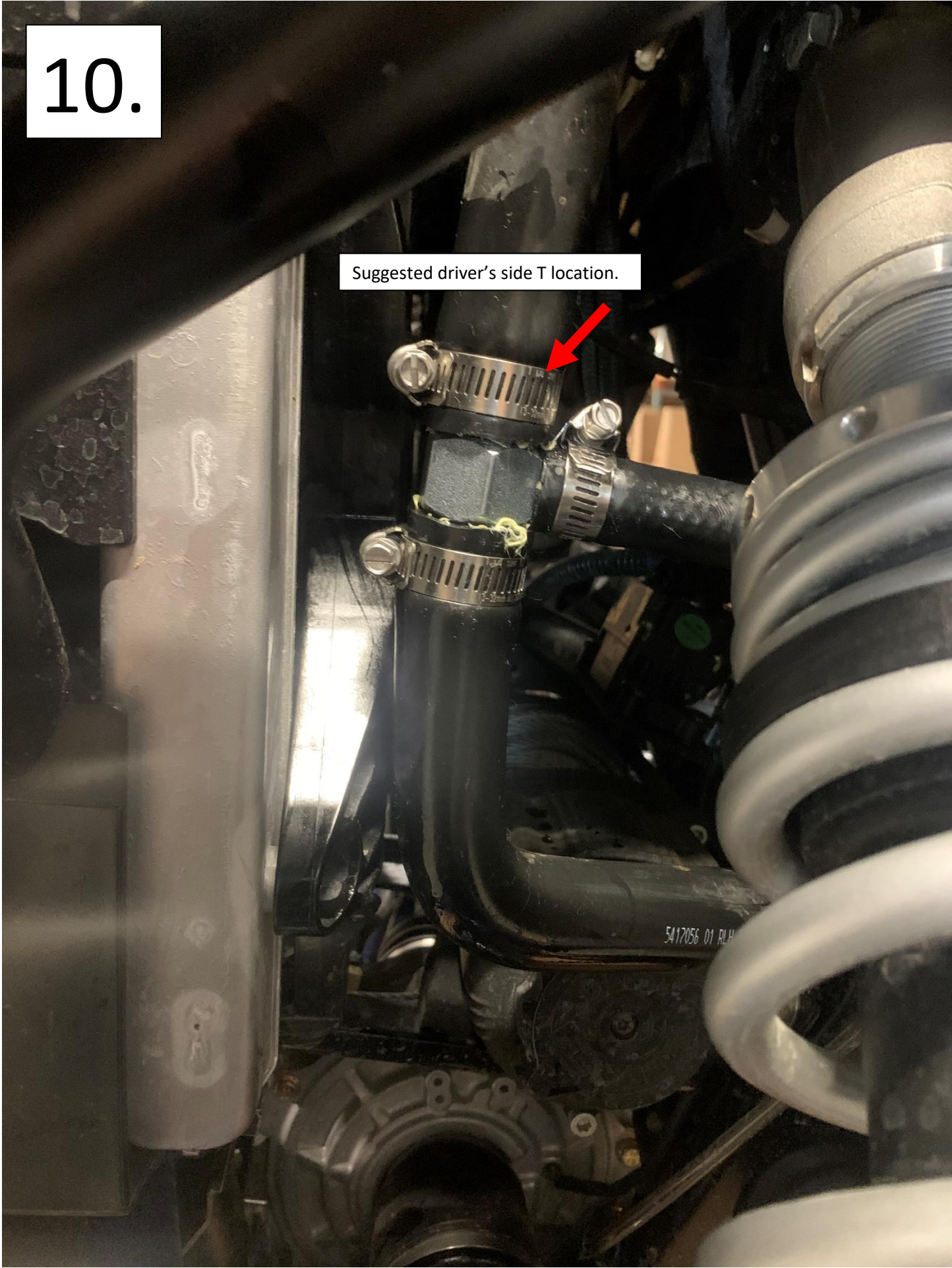


9A.



10.

Suggested driver's side T location.





11.

Suggested passenger side T location.

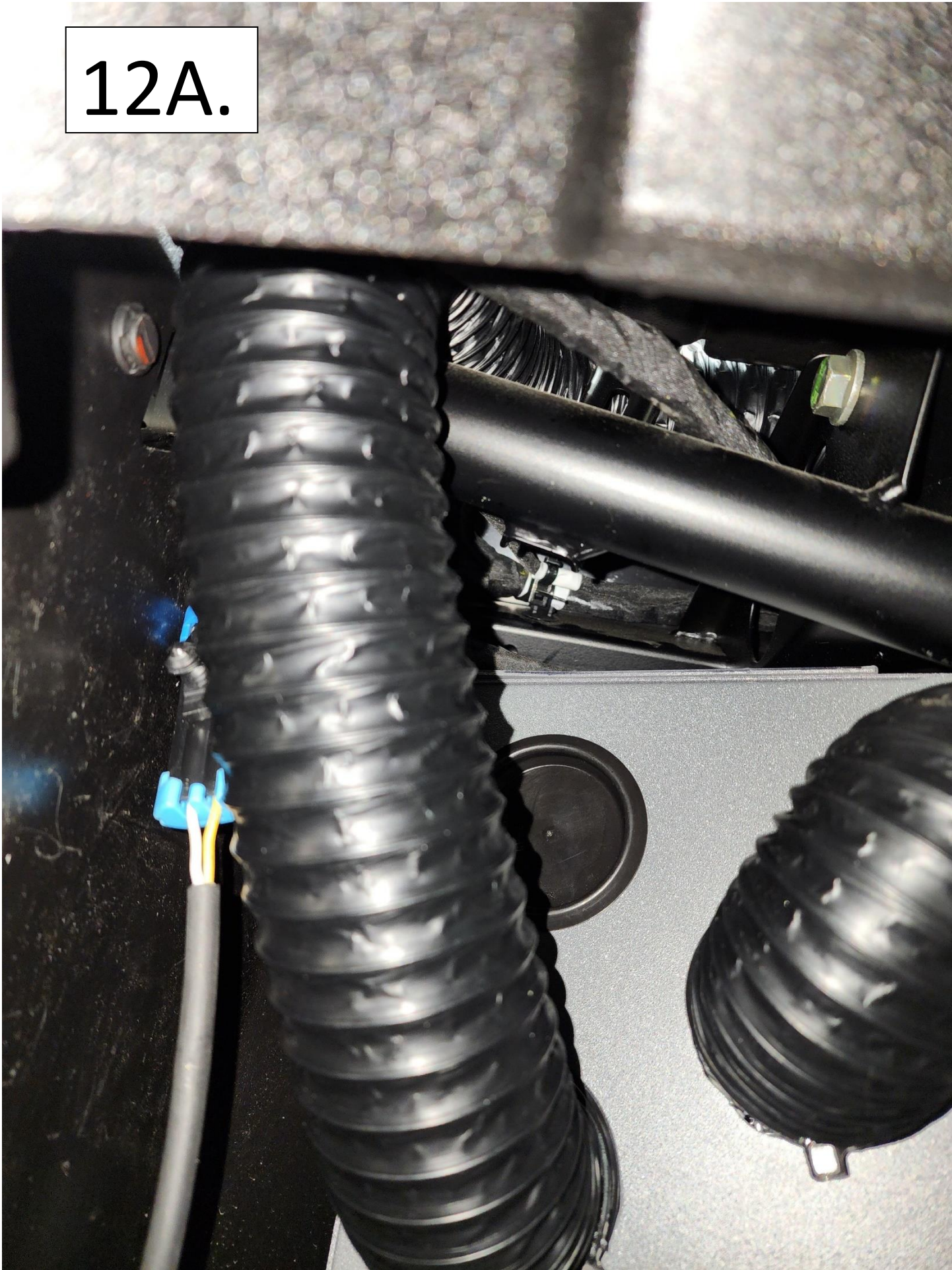


12.

Dash mounted defrost vents. Shown with dash plastic folded forward.



12A.



12B.



13.



Defrost Vent

Route to drivers side vent.

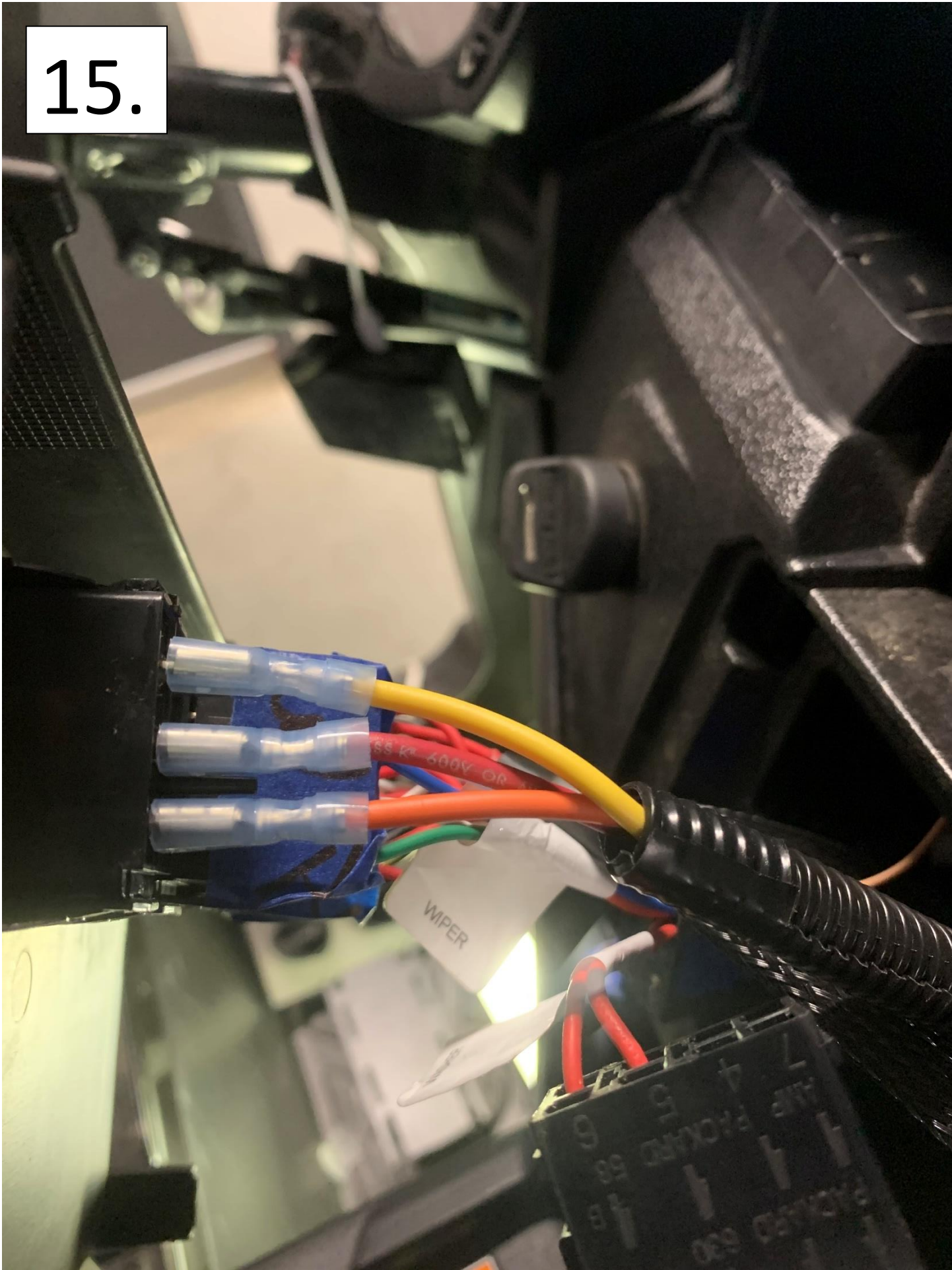
Route to passenger side vent.

14.

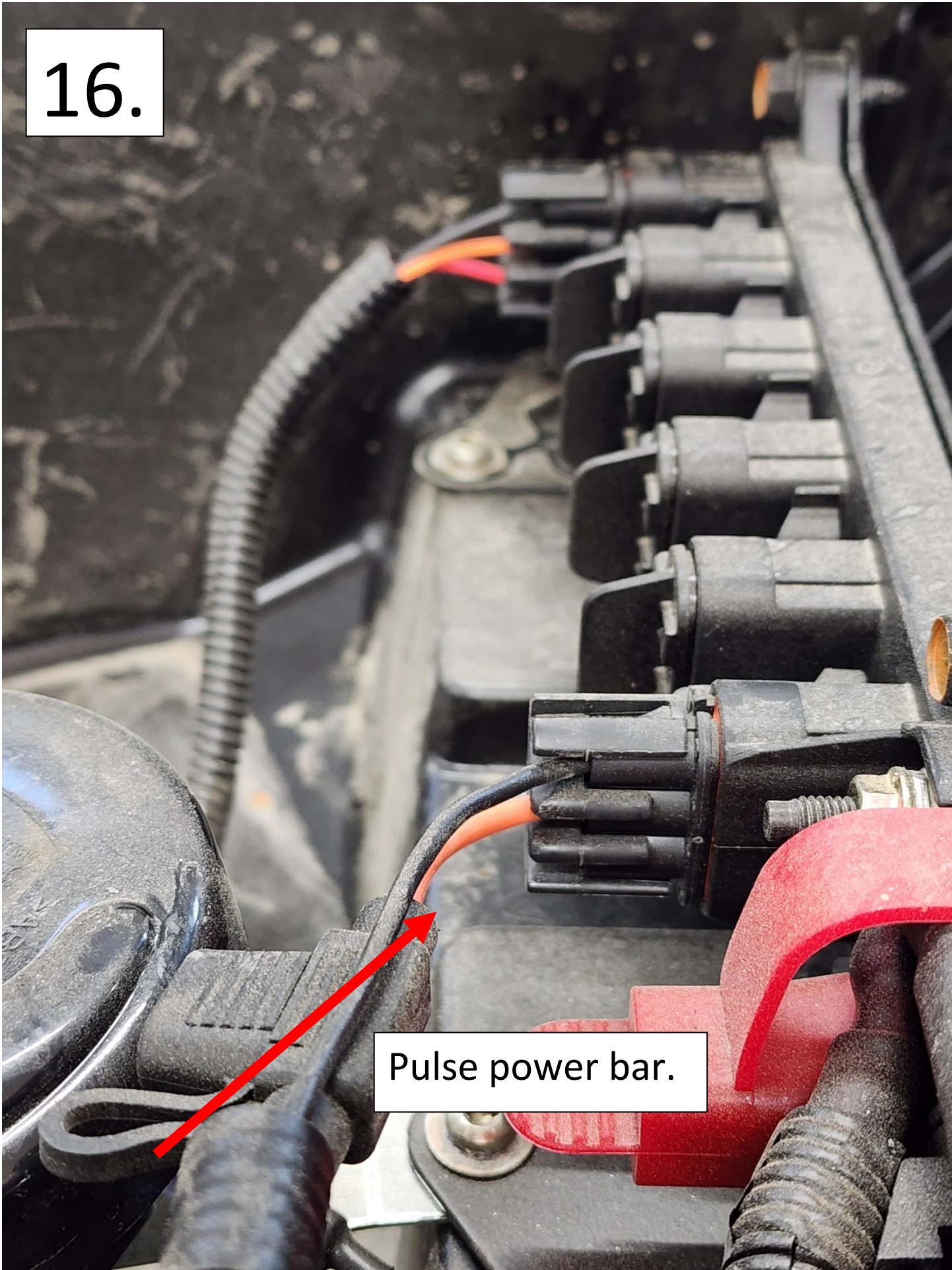


New speaker mounting holes.

15.



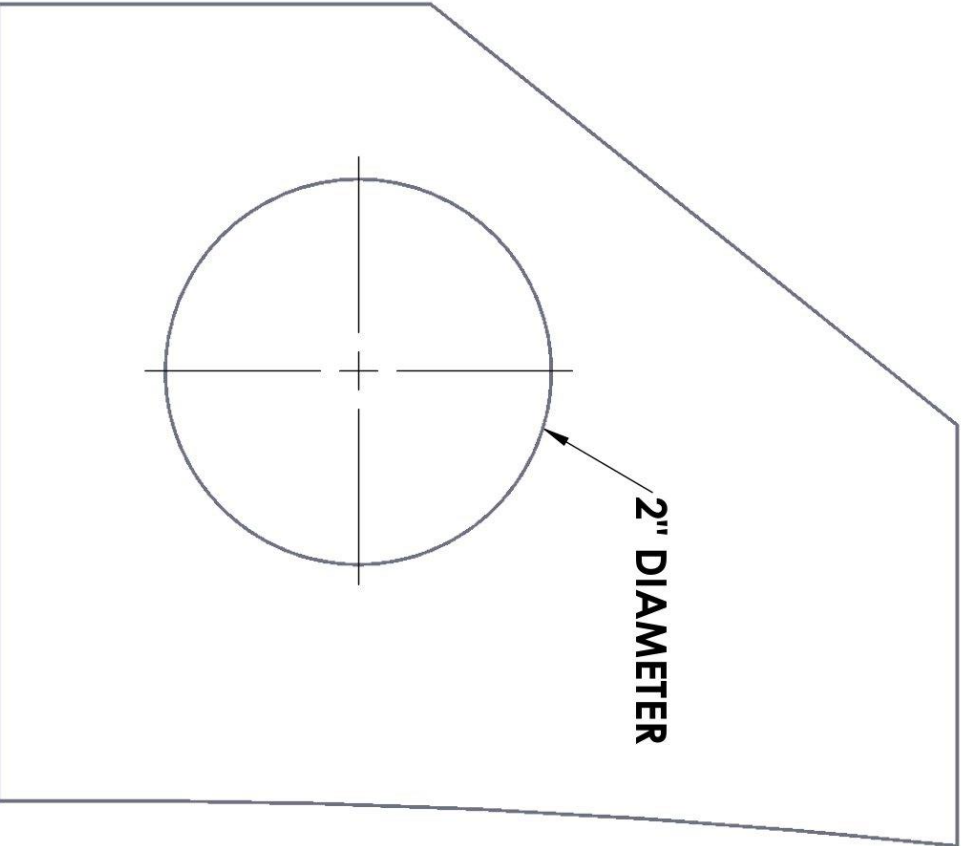
16.



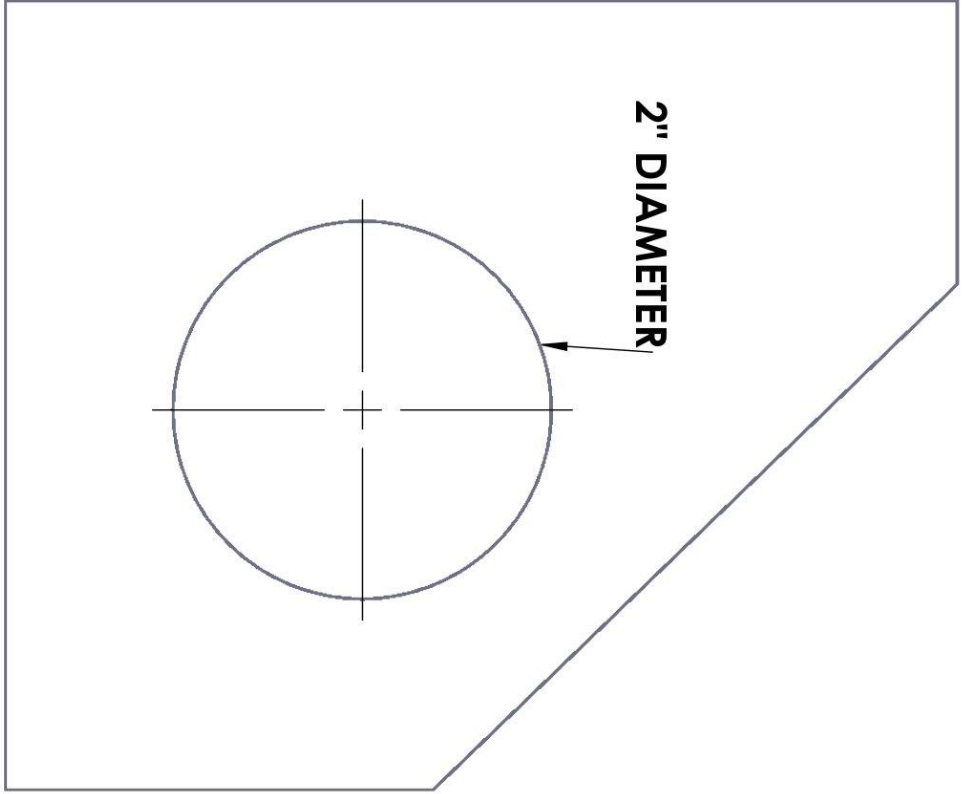
Pulse power bar.



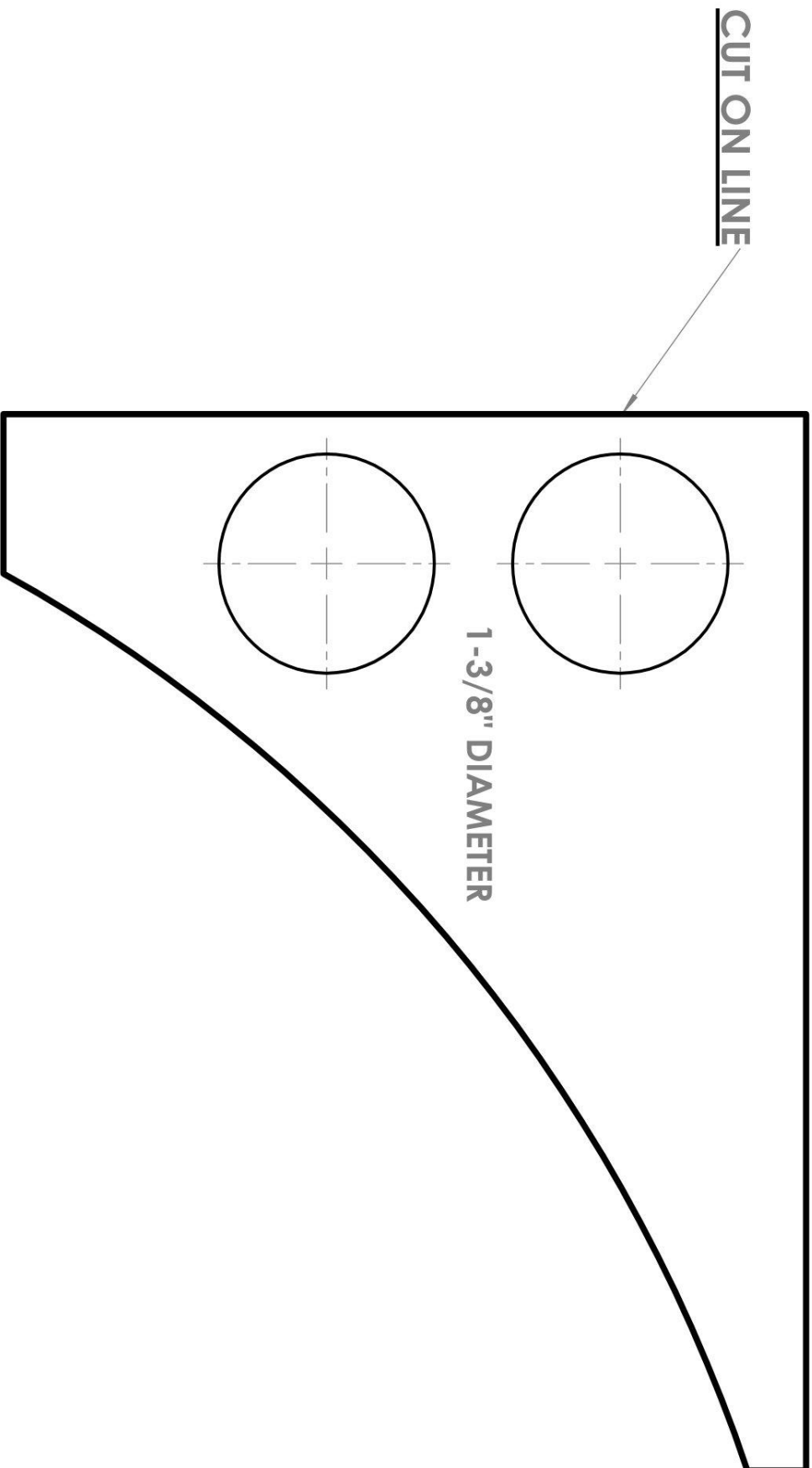
**PASSENGER**



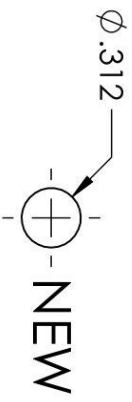
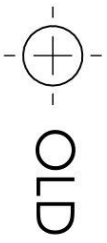
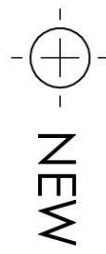
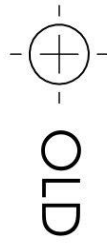
**DRIVER**



2021 POLARIS GENERAL  
SUPPLY/RETURN TEMPLATE



CUT ON LINE



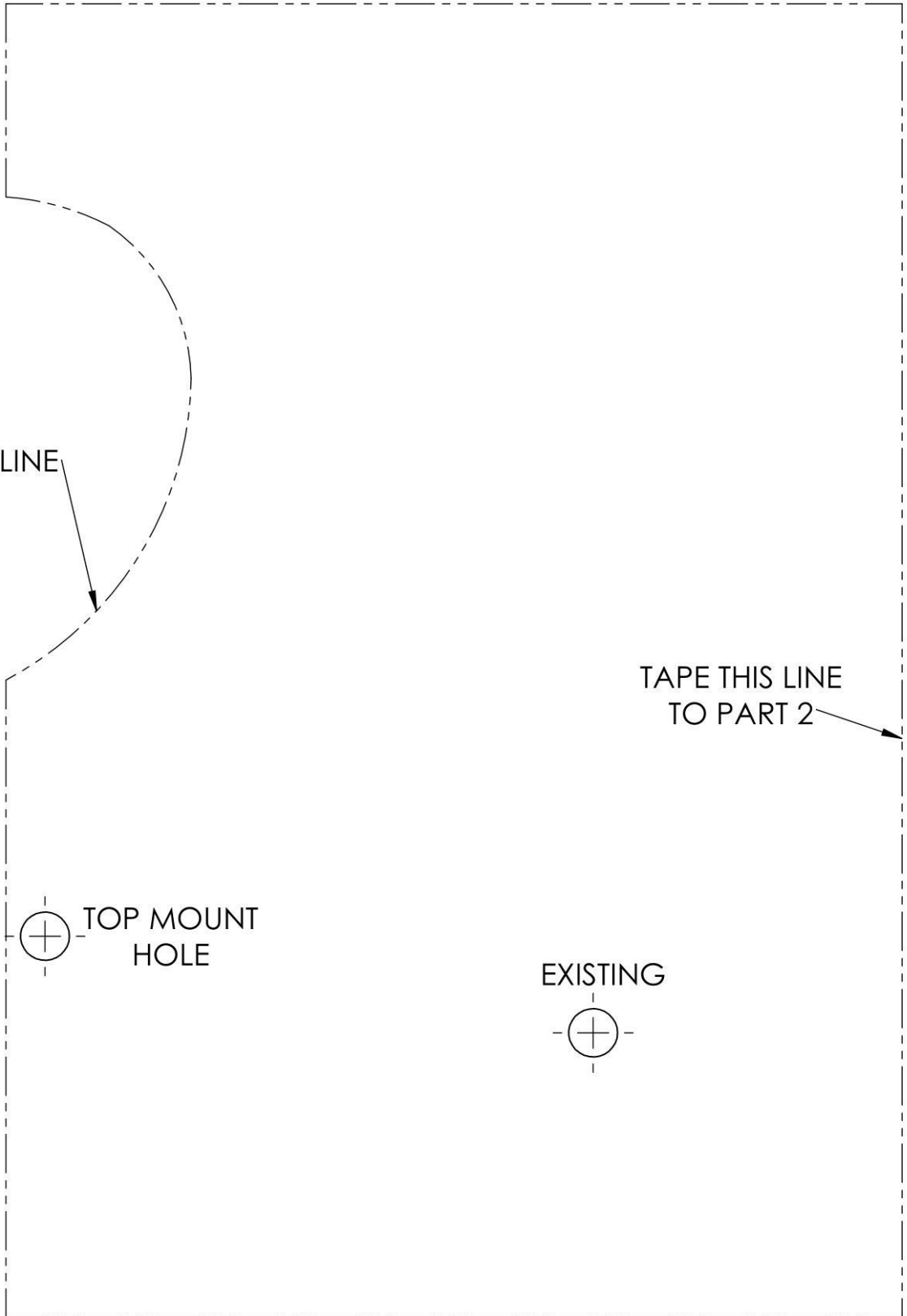
SPEAKER RELOCATION  
TEMPLATE

CUT ON LINE

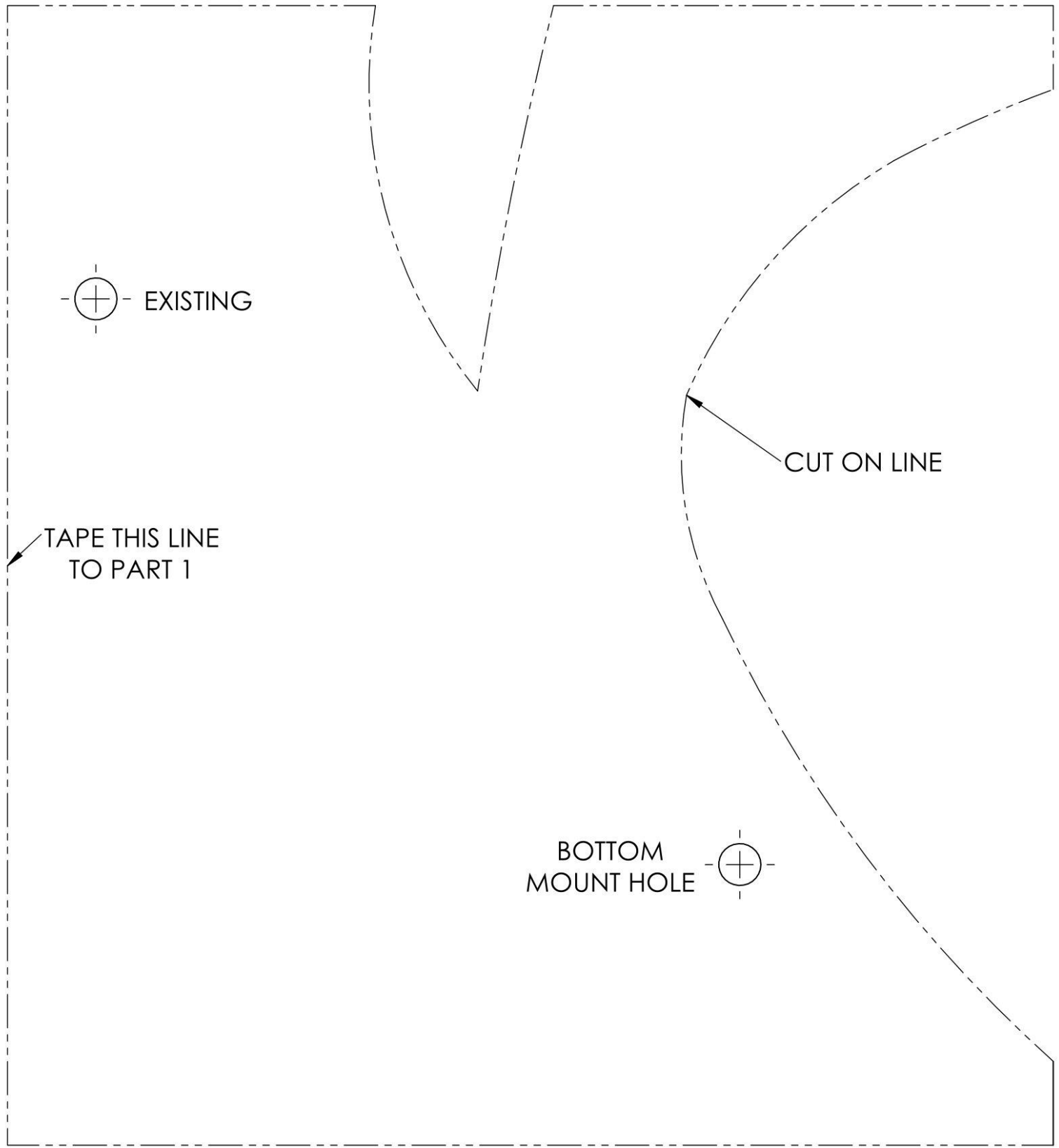
TAPE THIS LINE  
TO PART 2

TOP MOUNT  
HOLE

EXISTING



2021 POLARIS GENERAL  
HEATER MOUNT TEMPLATE PART 2



EXISTING

CUT ON LINE

BOTTOM MOUNT HOLE

TAPE THIS LINE TO PART 1