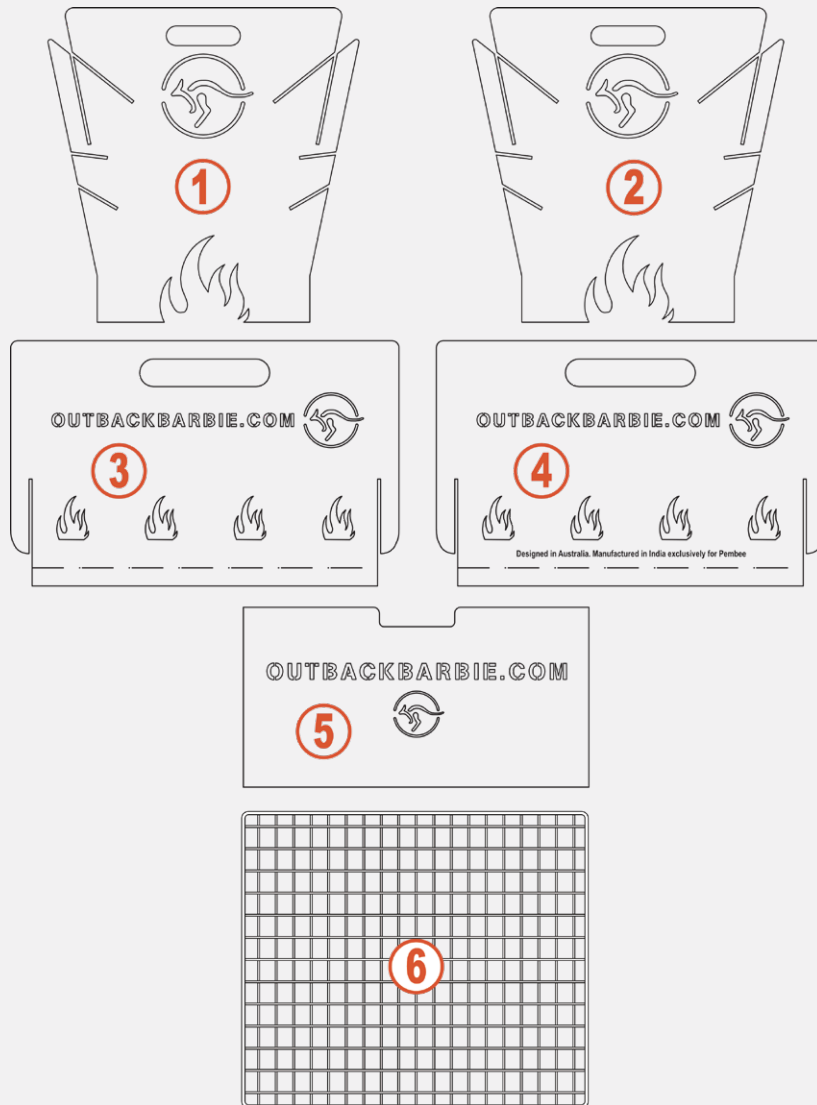
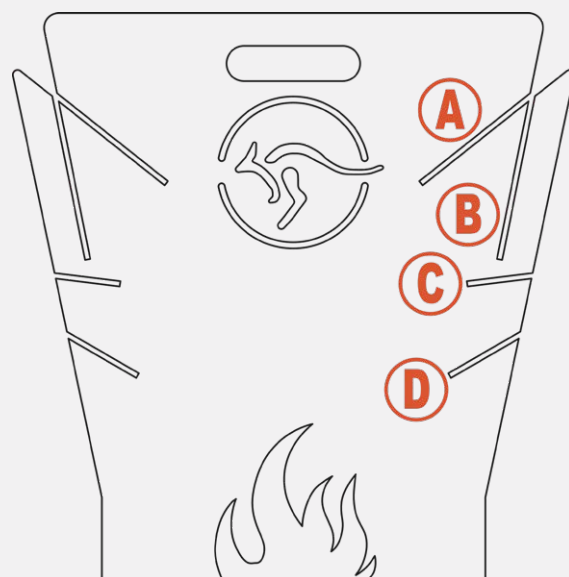


INCLUDED PANELS



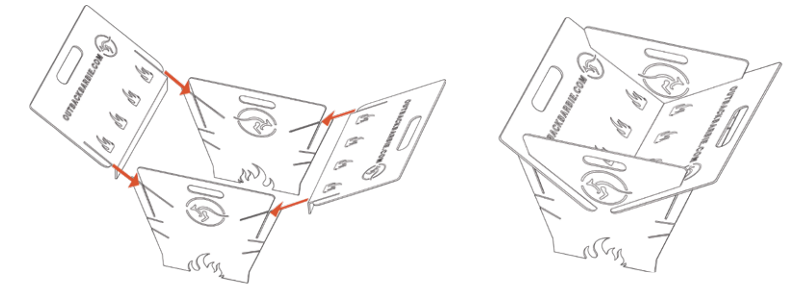
SIDE PANEL SLOTS



1A



- Insert side panel #3 into end panel #1 slot A, then into end panel #2 slot A
- Insert side panel #4 into end panel #1 and end panel #2 together, sliding into slot A
- Place BBQ grill #6 on top if required

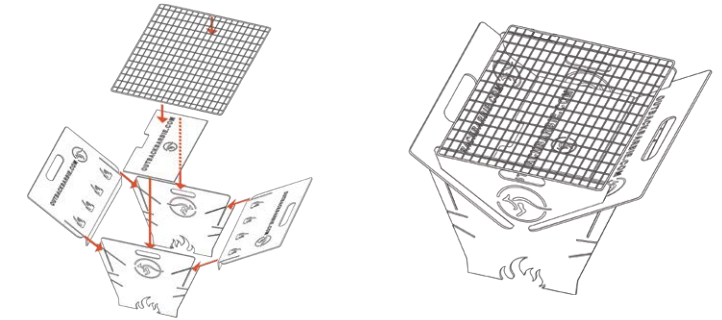


1B



CHARCOAL BBQ "V" SHAPE WITH BASE PLATE

- Insert side panel #3 into end panel #1 slot A, then into end panel #2 slot A
- Insert side panel #4 into end panel #1 and end panel #2 together, sliding into slot A
- Place base plate #5 into V
- Place BBQ grill #6 on top if required

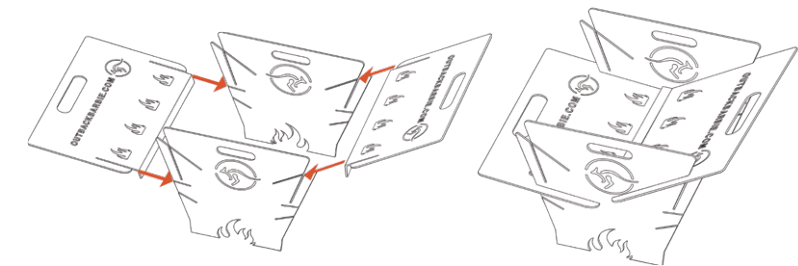


2



WOOD-BURNING BBQ OPEN ONE SIDE (TO RE-FUEL)

- Insert side panel #3 into end panel #1 slot C, then into end panel #2 slot C
- Insert side panel #4 into end panel #1 and end panel #2 together, sliding into slot A
- Place BBQ grill #6 on top if required

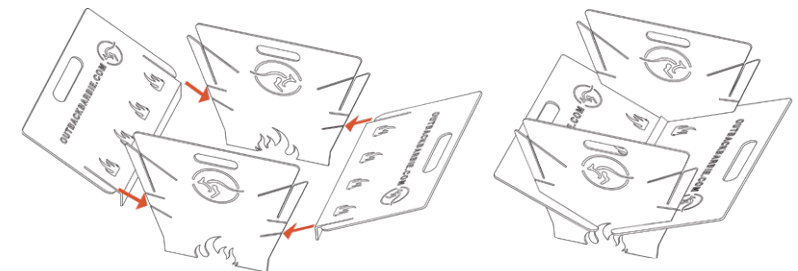


3



OPEN LOG FIRE PIT

- Insert side panel #3 into end panel #1 slot D, then into end panel #2 slot D
- Insert side panel #4 into end panel #1 and end panel #2 together, sliding into slot D



4



BRAZIER STYLE

- Insert side panel #3 into end panel #1 slot B, then into end panel #2 slot B with lip inside
- Insert side panel #4 into end panel #1 and end panel #2 together, sliding into slot B with lip inside
- Place base plate #5 in and sit on lip inside of side panel #3 & 4

