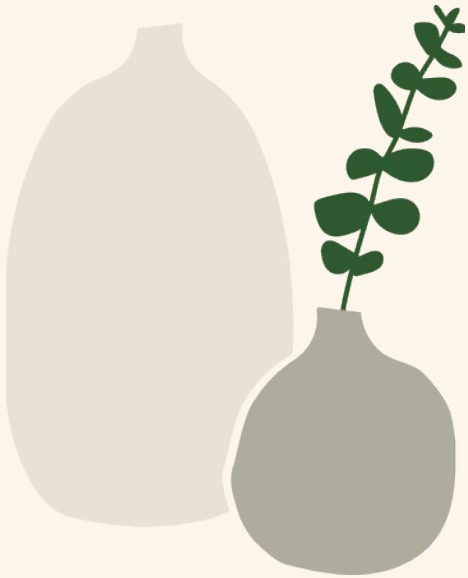


**CLAY
SYDNEY**

let's make!

private events





let's get down and dirty at your next party

CLAY SYDNEY

(without all the awkward
post-party apology texts)

Here at **Clay Sydney** we pride ourselves on helping you host events that bring people together, learn new skills, and **above all have fun!**

Be it for work, a birthday, a hens celebration, or just an excuse to get together, we've something for everyone.

Each of our inner-west studios have capacity for **intimate workshops of 6** or more, through to **energetic sessions of up to 60** people. We can also include satellite **virtual attendees**, if required.

For off site events, we've previously taught **150+ attendees**, and are very happy to go bigger - just tell us where and when!

This booklet's going to take you through your options, but if you've questions, or you're after something a little different, just give us a shout.

When you're ready to book, just let us know your preferred times and dates, and we can get you all booked in.

hello@claysydney.com | 0449 819 336



what are my options?

in-studio wheel

PAX: min 6 - max 12 (or 20 for a double bank)

location: Victoria Road Studio, Marrickville

duration: 90 mins

This is the class everyone thinks about when they hear 'pottery class', but we promise there won't be an awkward Swayze moment in sight.

It's a muddy road to making your first wobbly wheel thrown piece, but you'll have a blast along the way. Our expert wheel tutors take you through the process step-by-step, and make sure that everyone comes away making at least one piece. What will this piece look like? You decide, but usually it's a small cup, vase, bowl or planter.

You're more than welcome to bring along a drinkie or two, although for this class we don't recommend nibbles. You're too engrossed in the muddy task at hand to eat (and probably don't want a soggy clay-cracker either).

cost

private weekdays \$95pp for 6-10, or \$89pp for 11-20

You're welcome to have less than 6 people, however there is a minimum charge \$570

seated together weekends \$89pp via the website

hello@claysydney.com | 0449 819 336





what are my options?

in-studio handbuilding our iconic wine and clay

PAX: min 12 - max at each location 40; unlimited out of studio.

locations: All studios

duration: 2 hours

By far our most popular class is our Wine and Clay sessions, and you can probably guess why... cheers!

In this two hour session, you'll socialise, enjoy BYO nibbles and drinkies, and perfect your very own ceramic creation under the guiding hand of our expert handbuilding tutors. It's fun, social, and everyone makes something!

We focus on form and texture make your vessel; be it a vase, a planter, a mug, or something all you, baby!

Of course, if you'd prefer not to bring wine, that's fine too! We can be as family-friendly (or not) as you need.

cost

private \$95pp for 8-11, \$89pp for 12-16,

or \$84pp for 17+

You're welcome to have less than 8 people, however there is a minimum charge of \$760

private table on weekends \$89pp via the website

hello@claysydney.com | 0449 819 336



what are my options?

mindfulness and clay in-studio or out-of-studio

PAX: min 12 - max at each location 40; unlimited out of studio.

locations: All studios

duration: 2 hours

47% of the time, our minds are on something other than what we're doing in the moment, and this mind-wandering often triggers unhappiness.

If your team is anything like, well, everyone in this modern life, having a moment of mindfulness is invaluable - and is a skill which can greatly increase workplace wellbeing.

As a team, we'll work through a series of exercises designed to place ourselves in the moment - to focus on the task at hand, to be proud of the journey, and filter out the noise of life - with everyone creating their very own vessel.

cost

private \$95pp for 8-11, \$89pp for 12-16,

or \$84pp for 17+

You're welcome to have less than 8 people, however there is a minimum charge of \$760

what are my options?

out-of-studio handbuilding

PAX: the sky's the limit

locations: you tell us where, and we'll be there

duration: 2 hours, plus bump in/out

The beauty of our handbuilding sessions is they can be infinitely scaled up. As long as you've got a surface to work on, we'll bring everything else you'll need.

From the Sydney Opera House, to music festivals, to boardrooms: we're game if you are!

After the class we take away your work to our studio to be glazed, fired and returned to one location.

indicative cost

Within Inner Sydney. Additional travel expenses may apply for further afield, or for complicated bump-ins.

30-59 people \$110

60-99 people \$90pp

100 - 149 people \$80pp

150pax - 199 people \$75pp

200+ people \$POA

Please note, for crowds larger than 60, we will require a small riser and PA.

hello@claysydney.com | 0449 819 336





what are my options?

hybrid events or host-your-own with Clay at Home kits

hybrid

Our Clay at Home kits lend themselves excellently to hybrid events, when some participants aren't able to make it into the studio.

Each kit includes all the tools, clay and instructions they'll need. Simply let us know when booking how many kits you'd like us to send out, and we'll even arrange the courier, ready for them to virtually join us on the day.

host-your-own

Alternatively, if you'd like to organise your own clay-day without tutors, you're able to use our Clay at Home portal to access On-Demand videos and instructions to create your masterpieces.

cost

\$70 per person, including courier.

Firing of your finished works is included at our Marrickville studio, or we have a list of 'Pottery Pals' across Australia who'll be able to sort you out for a small fee.

what are my options?

something extra wow?

Clay Olympics

PAX: this is a great spectator sport, so we recommend it for larger groups to watch a select few individuals

duration: additional 30 mins

In this hilarious session, up to 8 participants will take part in the Clay Olympics; a series of pottery related challenges to become the master of mud!

Challenges include wheel throwing, one handed coils, slabs and the many handled mugs. We suggest senior management take part in this one.

It's a spectacle. It's a mess. It's loud. There's panic. Everyone cries with laughter.

cost

\$300 per session

additional time

In studio classes have set times to allow change over between classes, and for the mountains of production work we need to get through.

If you'd like extra time, this can be arranged in advance for a fee of \$150 each additional 30 mins.

hello@claysydney.com | 0449 819 336



nitty gritty booking, faq's, t&c's

HOW DO I BOOK?

Simply email hello@claysydney.com with your preferred class type, date and time, and number of guests. Our lovely staff will work with you to find a workable time slot.

DEPOSIT

We will then require a \$200, non-refundable deposit to secure your booking. Whilst this is non-refundable, we know things come up and you may reschedule within 14 days of your booking. You need to let us know via email ONLY - not texts, insta comments, garbled phone messages, or courier pigeons.

FINAL INVOICE DATE

You will be issued your final invoice 14 days out from your event.

We require payment to be finalised 7 days from your event.

FINAL NUMBERS DATE

We require final numbers 7 days from your event. Should your numbers go up from this date, we may be able to add to the booking, however we will not be able to remove from the booking. Please note that minimum numbers apply, and per person rates are on a sliding scale. Should you reduce numbers into a lower scale, your individual ticket price may go up.

LAST MINUTE RESCHEDULES

Within the 7 day window, up to 12 hours before your class, we recognise that there may be exceptional circumstances, such as severe illness where **a guest** may be unable to attend. In these instances we can provide a 50% refund per guest. We may ask for a medical certificate. We are unable to reschedule or refund guests within 12 hours of the class. Thank you for respecting, and honouring this strict 12-hour reschedule policy. No exceptions. No refunds. No class credits. Thank you.

Within the 7 day window, up to 4 hours before your class, we recognise that there may be exceptional circumstances, such as severe illness where **the guest of honour** may be unable to attend. In these instances we can reschedule your class date. We may ask for a medical certificate. We will be unable to refund guests should they not be able to make the new date. We are unable to reschedule a class within 4 hours of the class. The class can still continue for other guests. Thank you for respecting, and honouring this strict 4-hour reschedule policy. No exceptions. No refunds. No class credits. Thank you.

WHAT DO I NEED TO BRING TO CLASS?

Bring an apron or an old tee, if you'd like. You won't get super dirty, and the clay doesn't stain, but you might be a little dusty. Post COVID we are no longer able to provide aprons to wear, so please bring your own!

Bring your wine and nibbles, if you'd like, and glasses too! Don't forget your wine and nibbles. Again, post COVID, we're no longer able to provide glasses, so please bring your own.

HOW LONG DOES IT TAKE TO FIRE MY PIECE?

It usually takes around 3-4 weeks to fire, but make sure you keep your eyes on our pick-up page so know when it's ready. As we have HUNDREDS of students, we can only keep your work for 6 weeks after it's fired. After this time it will be donated to raise funds for our community kiln.

HOW MANY PIECES CAN I MAKE IN MY CLASS?

The ticket price includes glazing and firing of ONE finished piece (to be picked up from our studio), any extra pieces can be glazed and fired at \$25/piece). We also offer delivery of your ceramics, if you can't make it back to our studio! Delivery is \$15/piece, or we can package them all up for a set price - please email us.

WHAT IF I OR MY GUESTS ARE LATE OR FORGET ABOUT THE CLASS?

Unfortunately, we are not able to offer make-up sessions or refunds if you are late or forget.

Should you arrive late, we will not be able to extend your time period, so it's best to ask guests to arrive 5-10 mins early... although not too early as we won't be ready for you! Doors open 10 mins before class begins, and

you will not be able to enter before this. This includes set up time.

In studio classes have set times to allow change over between classes, and for the mountains of production work we need to get through. Our lovely tutors make it clear how much time is left in a class, and our classes have lots of time to complete your work, however, should your guests not leave within 15 mins of the end of the class, you will be invoiced \$150 for each additional 30 min block of time our tutors need to stay behind.

WHAT IF MY GUESTS GO TO THE WRONG STUDIO?

Unfortunately, we are not able to offer make up sessions or refunds if you go to the wrong studio. We have two studios - one in Marrickville, and one in Enmore. Please ensure your guests have the correct address. Fortunately, each studio is a 5-10 min drive from each other, so you shouldn't miss too much of the class.

WHAT IF MY CLAY-AT-HOME KITS DON'T ARRIVE IN TIME.

We require a minimum of 5 working days to courier out kits, but the sooner you can give us addresses the better. We don't guarantee that a kit will arrive on time, but it won't go to waste. Students have access to the online portal, so they can play along at a later date.

WHAT IF I MAKE A TOTAL TURD OF A POT?

Well, we can't all be good at everything, all the time, amirite? Whilst our tutors are top guns at getting the best out of folks, sometimes the clay just doesn't want to play the game, and your Pinterest dreams may not be met. Clay is a cruel mistress. You just gotta take it on the chin and try again.

WHAT HAPPENS IF MY PIECE CRACKS IN THE KILN?

Clay Sydney is not responsible for a piece cracking, breaking, exploding or any other type of unsatisfactory result after firing. Cracks happen.

HOW WILL I KNOW WHEN MY PIECE IS READY TO PICK UP?

Jump online to claysydney.com/pickup. You can pick up on behalf of everyone in your classes, but you need to have photos. Alternatively, we can mail all items to one location. There is an additional cost for this option.

WHAT HAPPENS IF MY PIECE GOES MISSING?

We don't throw work out within the 6 week pick-up window of its firing, so in the first instance we'll look for you - with around 1000 items on the shelves at any one time it can be a little tricky if it's been put in the wrong date box - especially so if you forgot to take a picture. If you don't have a picture we may not be able to help you.

In the very unlikely event it still can't be located, even with a photo, you will be offered a make-up session. If you purchased additional pieces in the wheel class, you will be refunded only the cost of additional pieces.

WHAT HAPPENS IF I FORGET TO PICK UP MY PIECE FOR MONTHS?

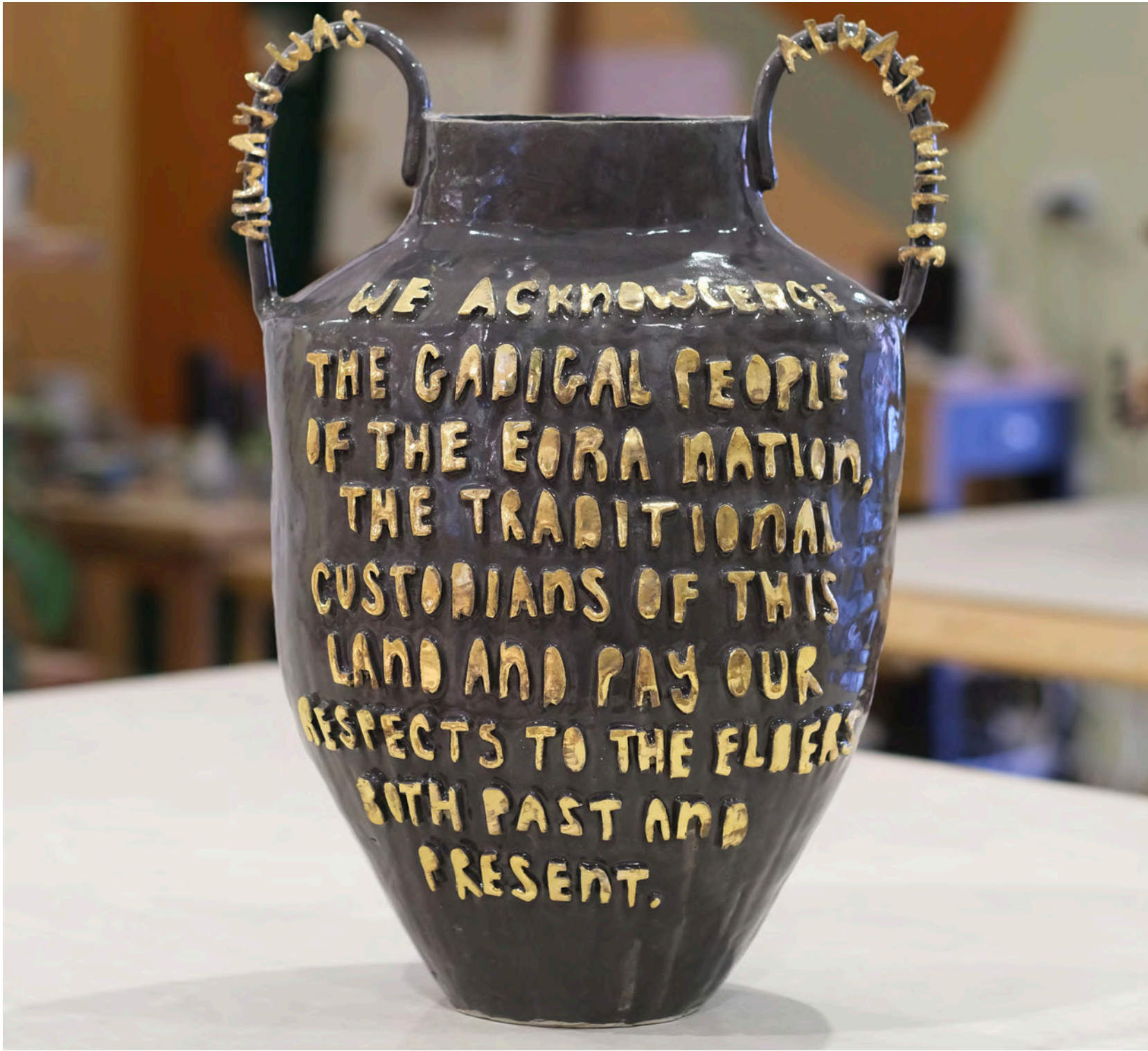
We can't keep work longer than the 6 week pick-up window. Your work will take 3-4 weeks to be fired, and then will be kept for a further 6 weeks (so about 2.5 - 3 months in total from the date of your class). After this, pieces are put into our abandoned shelves, where people can donate to charity and take it home.

WE'RE THINKING OF ARRIVING DRUNK OFF OUR ARSES/ GETTING ABSOLUTELY HAMMERED WHILE WE'RE THERE. COOL?

Noooo. Let's keep it classy, shall we. If our tutors think you, or one of your group is too drunk, then we'll ask you all to leave, and you won't be refunded, so let's look after each other.

I'M THINKING OF BEING ABUSIVE TO YOUR STAFF, MEMBERS, OR OTHER STUDENTS. COOL?

That's a hard no there, champ. Our staff are very lovely. If you're finding ceramics/life/the universe frustrating, that's fine, but you don't get to be a jerk. Not ever. We'll cancel your ticket on the spot, and you won't get a refund. We've only done this twice in four years and thousands of students. Don't be the third.



**CLAY
SYDNEY**

let's chat!

hello@claysydney.com | 0449 819 336