



### 5th Gen 4Runner Washer Fluid Reservoir Install Instructions

1. Remove factory filler neck. Pinch tabs circled in **GREEN** and then remove the filler neck.



2. Uncover factory reservoir by removing liner until it is fully exposed as shown below.



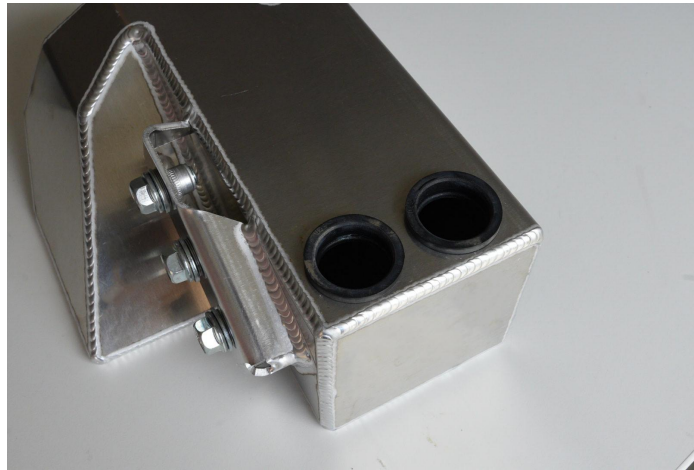
3. Remove the three 10mm bolts holding the factory reservoir in. Each bolt location is shown circled in **RED** in the next three images.



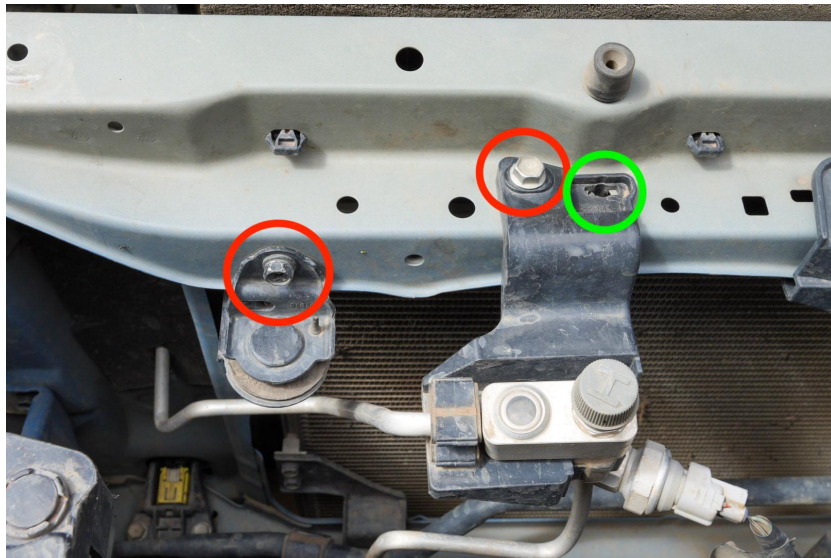
4. Lower factory washer fluid reservoir. If you have a remote reservoir mount from King shocks or other brands as shown in the above images, the remote reservoir mount will get in the way of removing the washer fluid reservoir. You will need to either temporarily remove the shock remote reservoir mount OR just cut out the part of the washer fluid reservoir that is bumping into the remote shock reservoir.
5. Remove washer fluid pumps. Tip! Spraying soapy water on the pumps will make it much easier to remove. Gently turn the pumps back and forth or use a flat head screwdriver to gently pry the pumps out. Do not damage the gasket. The pumps and gasket will be reused.



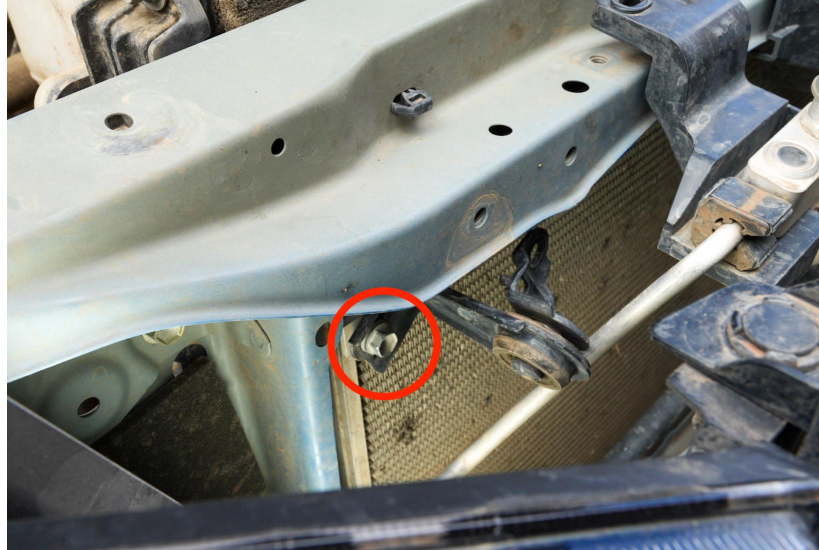
6. After removing the pump gaskets, clean off and reinstall the two gaskets on your new washer fluid reservoir.



7. Make room to mount the new reservoir. Remove two 10 mm bolts circled in **RED** in the image below. After removing bolts, pinch tab circled in **GREEN** and gently lift the AC line mount up. Having the AC line loose will give us a little bit of wiggle room to install the new reservoir.



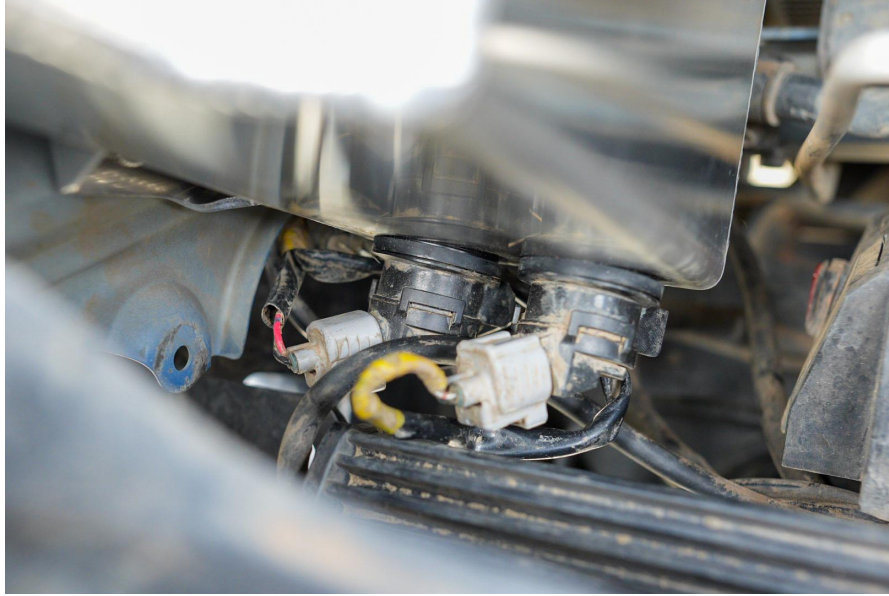
8. Loosen the bottom 10mm bolt for the radiator mount shown circled in red in the image below. You do not need to fully remove it. You only need it loose enough to rotate the radiator mount to the side.



9. Remove plastic clips holding the pumps and wires. This will give just enough slack in the lines to reach the new location. Route the pumps and wires towards their new location.
10. Place the new reservoir into position. Mount the reservoir using the three supplied bolts with a 12mm ratcheting wrench. A normal wrench will work as well, but a ratcheting wrench makes it much easier in these tight spaces.



11. Mount pumps onto the new reservoir. Pull out enough slack so that the pumps will reach the new location. Make sure the pumps are fully seated. The image below is an example of pumps that have not been pushed in all the way. Again, use soapy water to lubricate the gaskets! It makes this step much easier.



**12. If you are planning on retaining the plastic radiator bay cover, use a hole saw to drill a hole in the top cover for easy access to your reservoir.**

**13. Fill the reservoir with new washer fluid. Congrats. You're done! Enjoy your new 100% Made in the USA reservoir relocation.**

**Tag us on Instagram for a chance for your photos to be featured on our website or IG page!  
@snowboundcustoms**