

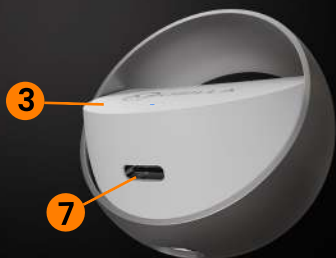
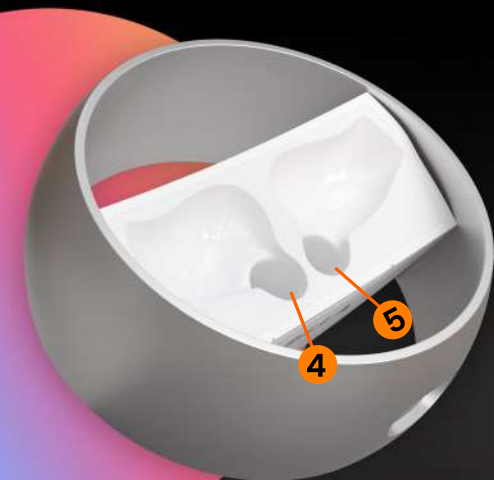


MBUDS 107 TWS Earbuds

User Manual



Appearance:



- ① Left Ear Piece
- ② Right Ear Piece
- ③ Charging Case
- ④ Left Earpiece Charging Socket
- ⑤ Right Earpiece Charging Socket
- ⑥ Multi-Function Touch Area
- ⑦ Type-C Charging Interface

Charging:

Charge/Storage Case::

Connect the case to a charger using a USB Type-C cable to charge the Charge/Storage Case.



Earbuds:

Place the earbuds in the charged Charge/Storage Case to charge the earbuds.

Note: Please take off the sticker peels attached to the earbuds before you charge them.

To Connect:

Charge the Charge/Storage Case and the Earbuds at least 70% before the first usage.

Pairing:

1. Take out the Earbuds from the Charge/Storage Case and place them in your ears.
2. Go to the Bluetooth settings of your device and switch it on.
3. Scan available devices.
4. Connect 'Mobilla MBuds 107' to your device.



Smart Touch:

Play/Pause:

Single tap on the Multi-Function Touch Area.

Repeat Track:

Double tap on the Multi-Function Touch Area of the left earbud.

Next Track:

Double tap on the Multi-Function Touch Area of the right earbud.

To Answer Calls:

Single tap on the Multi-Function Touch Area.

To Hang Up Calls:

Single tap on the Multi-Function Touch Area.

To Decline Calls:

Tap and hold on to the Multi-Function Touch Area.

Power Off Both Earbuds:

Long press for 4 to 5 seconds on the Multi-Function Touch Area.

Power On Right Earbud:

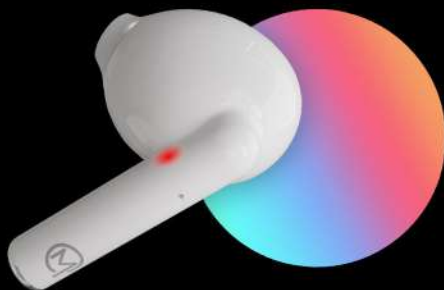
Long press for 4 to 5 seconds on the Multi-Function Touch Area of the right earbud.

Power On Left Earbud:

Long press for 4 to 5 seconds on the Multi-Function Touch Area of the left earbud.

Call Voice Assistant:

Long press for 2 to 3 seconds on the Multi-Function Touch Area.



Specifications:

- **Bluetooth Version:** 5.3
- **Music Playtime:** Up To 35 Hours
- **Sweat Resistant:** IPX4 Rating
- **Fast Charge**



Thank You For Choosing Mobilla
MBUDS 107

