



Slow Juicer

USER MANUAL

Model: ZM1902
120V 60Hz 200W

1 Introduction

Simplify your daily wellness routine with this compact, easy-to-use appliance. With its powerful yet gentle extraction, it delivers nutrient-rich juices in moments, making it easy to incorporate fresh, vibrant flavors into your busy routine. Compact and easy to clean, it's the perfect companion for a healthier you.

2 Safety Precaution



1. Do not immerse this appliance in water or any other liquid, and do not rinse the base under the faucet; otherwise, it may be in danger of electric shock.



6. Do not clean any part of the appliance in a dishwasher.



2. Do not allow the main cable to dangle, touch the plug with wet hands, rest on a hot surface, or come into contact with oily liquids.



7. Always use a soft brush to clean the housing. Do not use water or soap for cleaning.



3. Do not let children play with the appliance.



8. Do not open the lid until the appliance has come to a complete stop.



4. Make sure the appliance is never empty when turned on.



9. When the power cord is broken or damaged or the plug-in part becomes loose, do not operate it. Send it for inspection and repair.

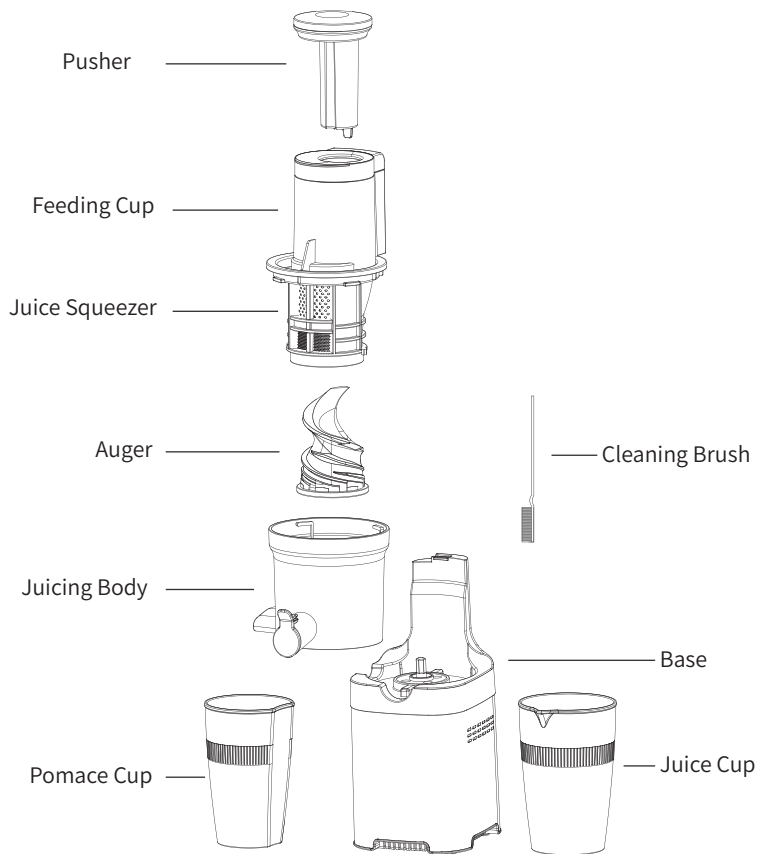


5. Do not switch between ON and R continually. Wait for 3-5 seconds for a complete stop.



10. The appliance is for household use only.

3 Product Introduction



Never use the pusher individually without the lid.



Use the cleaning brush for routine cleaning of the lids and other parts. But avoid using it on the housing.

4 Operation

4-1 Clean the Parts



Rinse and thoroughly dry the auger and other accessories.



Ensure the base groove is completely dry and free of any liquid or debris.

4-3 Set Up the Auger

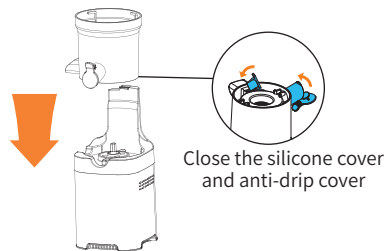


Attach the auger and ensure it is properly set up.



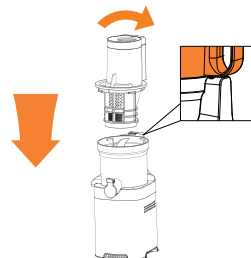
Make sure the all parts are attached securely. Otherwise, the appliance can not operate.

4-2 Assemble the Body



Securely attach the juicing body and the base.

4-4 Assemble the Feeding Cup



Attach the feeding cup and rotate it clockwise.

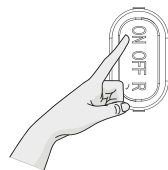
4-5 Place the Cups



Place the juice cup and pomace cup as shown.

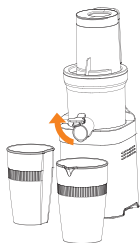
! Please avoid putting frozen ingredients, hard food (such as nuts, coffee beans, sugar cane), meat, and cooked ingredients (such as boiled potatoes and carrots.)

4-7 Start Juicing



Plug-in the power cord, and then press the "ON" button. It starts to work and can extract delicious vegetable and fruit juice.

4-6 Turn Up the Cover



Turn up the anti-drip cover.

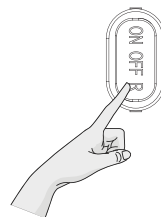
4-8 Include More Nutrients



When squeezing, you can turn up the feeding cover, and put some small and medium-sized vegetable and fruits.

! The appliance can not operate if the lid is not properly closed.

4-9 Reverse Function



For blockage, switch to the R position for 3-5 seconds to loosen the screw.

! Do not switch between ON and R continually. Wait for 3-5 seconds for a complete stop.

! Removed cores, hard seeds or thick skin or shells before processing.

💡 Soft fruits (e.g. grapes and watermelon) are easy to stuck in the juicer, please reduce the feeding speed. Or mix it properly with hard fruits before feeding.

💡 After squeezing, press the "OFF" button to turn it off. Remember to unplug from the power socket and clean it in time.

4-10 Push In



Use a pusher to get rid of the sticking grains.

5 Control Panel

	"ON"	Power on
	"OFF"	Power off
	"R"	Reverse mastication (For solving ingredient clogging problems)

6 Safety Usage

- ❶ Please read all the instructions.
- ❷ Do not operate the appliance if it is damaged.
- ❸ Do not touch any charged part and rotating parts of the appliance, which may cause injury.
- ❹ It is only allowed to use the professionally installed power socket to operate the appliance with a correct voltage.
- ❺ Do not use an extended power cord.
- ❻ It is necessary to unplug the appliance after using it every time or before using or replacing its accessories or cleaning it.
- ❼ Do not use any damaged cable or plug for operating the appliance. If its power cord is damaged, it is a must to entrust the manufacturer or its service agency or a similar professional for replacement in order to prevent any danger.
- ❽ This appliance may be used by children over the age of 8 years old and by persons with reduced physical, sensory or mental capabilities or by persons with a lack of experience or knowledge if they are supervised or instructed by a person responsible for their safety how to use the appliance safely and have understood the associated hazards.
- ❾ The appliance can be used only with the supplied base.
- ❿ Be sure not to operate the appliance on any uneven surface.
- ⓫ The appliance is most appropriate for household use and it is not recommended for commercial and industrial purposes. Do not operate it outdoors.
- ⓬ If you intend to render the appliance obsolete, it is forbidden to discard it at will; please first disconnect its power supply and then send it to the officially designated garbage dump.
- ⓭ Be sure to unplug the plug from the wall socket when not using the appliance or before cleaning it; please cool the parts before installing or removing them.
- ⓮ Do not operate the appliance when its power cord or plug is damaged; do not operate after it goes wrong or is damaged, and it is necessary to send it to the nearest authorized service facility for inspection and repair.
- ⓯ The use of any accessory not recommended by the electrical appliance manufacturer may cause fire, electric shock or personal injury.

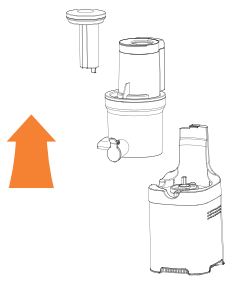
- ❶❶ Do not hang the power cord on the edge of table or counter, or make it contact any hot place.
- ❶❷ Do not place it nearby a position with hot air or an electric stove or in a heating oven.
- ❶❸ In case of any damage caused by improper use or failure to comply with these instructions, we will not undertake any responsibility.
- ❶❹ NEVER insert your hands into the juicer, as you may contact one of the blades and experience laceration.
- ❶❺ Dyeing of the juice strainer, the juicing body cap, the spiral pusher and other accessories after juicing of some vegetables or fruits is normal and will neither affect food eating nor do harm to health.
- ❶❻ Do not sterilize any accessories of the appliance with hot water with a temperature higher than 50°C(122°F) or a microwave oven, otherwise they may heated, deformed and damaged. The materials of all parts in contact with food ingredients should comply with food hygiene certification and be clean, hygeian and reliable.
- ❶❼ If the machine works continuously for a long time, it will automatically shut down to protect the motor from overheating. Please note that this does not mean that the machine is broken, but it means that it needs to take a rest. At this time, please turn off the machine and wait for the machine to cool down for 1 hour before use it again.

7 Technical Specification

ZM1902	
Voltage	120V~ 60Hz
Power	200W
Continuous Operation	≤10 minutes
Interval Time	≥10 minutes
Product Size	21.7*17*42 CM 8.5*6.7*16.5 INCH

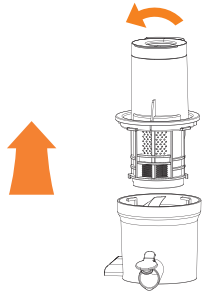
8 Disassembly Guide

8-1 Pull Off the Body



Pull the pusher and juicing body off from the base.

8-2 Unlock the Feeding Cup



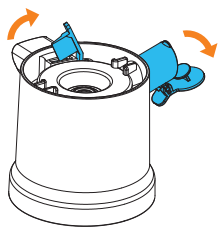
Rotate the feeding cup anti-clockwise and extract upwards. Remove it from the juicing body.

8-3 Remove the Auger



Pull the auger off from the juicing body.

8-4 Open the Cover



Open the silicone cover and anti-drip cover for cleaning.

9 Cleaning & Maintenance

Before you clean the appliance, make sure the blade has come to a complete stop. Do not use coarse and aggressive cleaning agents (e.g. sharp, objective, scrapers, diluting agents or other solvents)

	Before cleaning, please make sure that the juicer is turned off and the power is cut off.
	Turn up the silicone cover and anti-drip cover before cleaning of the pomace. Remember to reattach both covers after cleaning to avoid any juice spillage.
	Pomace on the metal filter of the juicer can be cleaned with a cleaning brush.
	Please rinse all accessories and cups under running water and wash them with soapy water.
	Do not use a metal brush to clean, you can use the attached cleaning brush to clean.

10 Hints & Tips

1. How to clean the ingredients?

Rinse fruit or vegetables thoroughly with water or produce wash for fruits and vegetables.

2. Preparing ingredients for best results.

- Remove large stones from fruits, such as peaches, plums, mangoes and apricots to avoid damage to the juicer.
- Peel hard and thick skin from fruit first, such as citrus fruits, watermelon.
- Remove the seeds first to avoid affecting the taste of the juice, such as oranges.
- Cut the long fiber vegetable into small pieces (about 3 cm) before putting it in. Such as celery and wheat grass.
- Cut large pieces of food into small pieces before putting them in, such as carrots and apples.

3. How to increase the juice yield?

- If you need to extract a large amount of juice, please repeat the steps of "cleaning-juicing-cleaning" to avoid pomace accumulating in the filter and blocking the mesh.
- Please cut the ingredients into small enough pieces.
- Do not press the food hard with the food pusher.



Juicing soft fruits and vegetables like grapes, kiwi, and tomatoes can lead to the juice getting trapped in the juicer due to their high juice content, which is normal.

At this point, it's recommended to decrease the feeding speed so the juice can flow out smoothly. If needed, disassemble and clean it in time.

11 Troubleshooting

Trouble	Possible Cause(s)	Solution(s)
Product does not work	<ul style="list-style-type: none">- The power cord may not be plugged in, or it has poor contact- The parts is not securely attached	<ul style="list-style-type: none">- Plug in the power and make good contact- Securely attach the parts
Bad smell	It is normal that it appeared in the first few times of use, and there will be no safety hazard.	It disappears after a few uses.
	It has not occurred before, but it suddenly occurs during a certain use, which may be caused by continuous use for a long time.	After 10 minutes of continuous use, rest for 30 minutes before the next start.
Machine stops working	Overheat protection due to continuous use for a long time.	Shut down and wait for 1 hour before restarting the machine.
	Food clogs in the juicer.	Restart the machine after disassembling and cleaning the accessories.

If after reviewing the Troubleshooting section, the problem is not resolved, do not attempt to repair or disassemble the unit yourself. Please contact the after-sales service for assistance.

VIP SERVICE

Plus up to 12 months

Extension for excellent after-sales service

Thank you for choosing **amzchef** product. We sincerely hope that you are satisfied with it.
This product is warranted against any electronic or mechanical defects for a period of **12 months** from the date of original purchase by the consumer.
Replacement unit/parts will be warranted for the remaining portion of the original warranty period.

Questions? Problems? Concerns?

If you need any help, please feel free to contact us.

Problem + order number + a photo or a video attached in the email would help us solve the problem better and faster. We will get back to you within 24 hours once we received the email.

website: www.iamzchef.com / email: info01@iamzchef.com



Problem+Order Number
+Photo/Video

Contact us

Within 24 hours

We must find a
solution for you



MADE IN CHINA

Manufacturer: Zhongshan Jimi Electrical Appliance Co., Ltd.

Address: No.2, Yucheng 2nd Road, Xiaolan Town, Zhongshan City, Guangdong, China

Contact: Emily Tel: +1 (838) 910 8317 E-Mail: info01@iamzchef.com