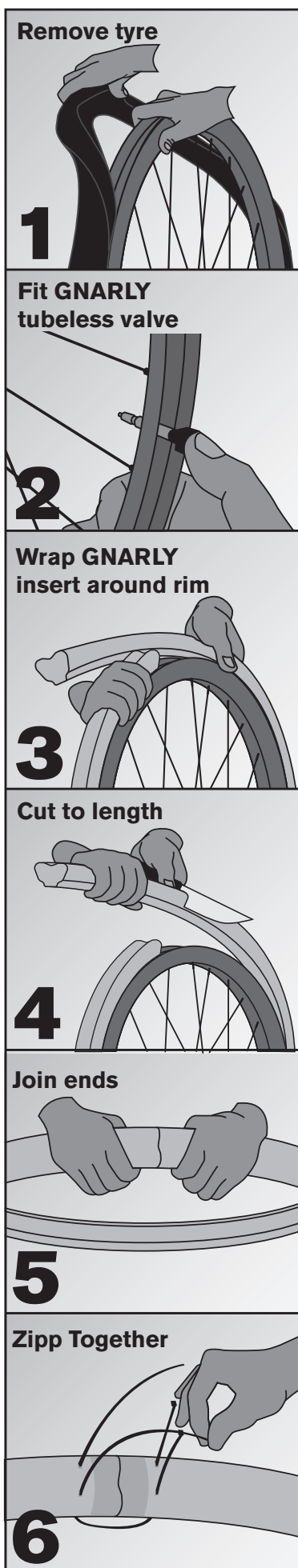


# GNARLY DIY INSTALLATION



## Step 1: Remove Tyre

If you are installing the Gnarly Inserts on your existing wheels, remove your tyre and check the tubeless rim tape is ok. If it is lifting up or wrinkly, make sure you replace it before you install the GNARLY Tubeless Valve. If your hoops are new, you'll need to install tubeless tape first.

## Step 2: Fit Gnarly Tubeless Valve

Install the GNARLY High Flow Valve. GNARLY High Flow valves have more clearance and larger air intake holes positioned on the sides, this makes inflating and deflating your tyres easier. With your thumb, push the valve firmly against the rim bed and screw the locking nut down tight with your fingers. It's important to have a tight seal so you don't lose air.

## Step 3: Wrap Gnarly Insert Around Rim

Make sure you have a marker pen close by for this step. GNARLY inserts are designed to fit onto any diameter wheel and need to be cut to length before installing. To do this, wrap the GNARLY insert around the top edge of the rim. Do not stretch the insert or pull it tightly when doing this step. Overlap the ends (one on top of the other) and mark the insert with a pen where they cross over. Remove the insert and then repeat the process to make sure you have correctly measured the insert. It's better to check twice and be sure it's spot-on. Make sure the mark you make is easy to see.

## Step 4: Cut to Length

You'll need a sharp retractable knife or blade for this step. Carefully cut the insert at the mark from the previous step. Take your time! Make sure the cut is clean and straight, the two ends need to fit neatly together. It's easier to do this if it is lying flat on something hard. If you think you need a practice run, cut off a small piece at the "waste" end of the insert, or, ask someone to give you a hand.

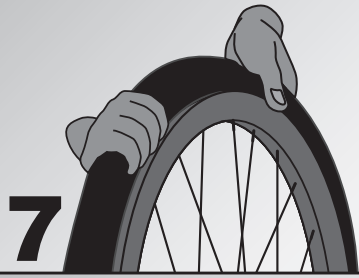
## Step 5: Join Ends

OK, now you want to join the two ends together. We need to do this part so the insert doesn't move around too much, or separate, once it has been installed. You'll need the joining tape, a small screw driver and the two cable ties for the next two steps. Hold the ends firmly together and wrap the tape around them nice and firm, don't worry if there is excess, be sure to use all of it. This will hold your rim protector together while you do the next step.

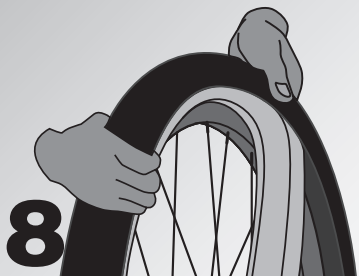
## Step 6: Cable Tie Together

We now want to secure the ends together properly using the cable ties. Using a small screw driver make four small holes in the insert, two on either side of the joining tape. Look at the diagram to see the best place to put the holes. Be careful not to stab yourself (or your mate) when you are doing this. The easiest way is to put the insert across the edge of the bench and slowly push the screw driver through the insert until it hits the bench. Now feed the cable ties through opposite holes and pull firmly together. Don't squash it, just make it firm. Make sure the joiner is on the top side of the GNARLY insert. You can cut the excess off or leave it, it won't affect the function, so it's up to you.

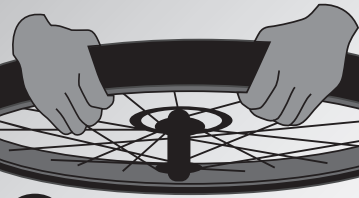
Fit one side of tyre



Fit GNARLY insert



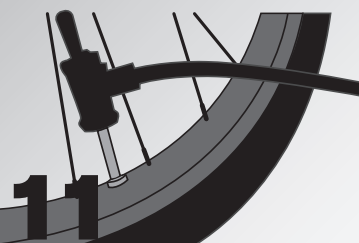
Finish fitting tyre



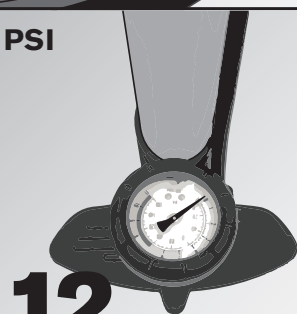
Add tubeless sealant



Inflate



PSI



### Step 7: Fit One Side of the Tyre

Fit one side of the tyre onto the rim.

### Step 8: Fit the Gnarly Insert

Place your GNARLY rim protector inside the tyre in the same way you would if you were fitting a tube.

### Sealant Option 1

OK, now finish fitting your tyre. Some riders (me included) put their sealant in during the tyre install, if you like to do it this way, add your sealant now.

**NOTE:** When you are running GNARLY rim protectors, make sure you add extra sealant to allow for additional coverage of the insert. They don't absorb sealant but you do need to coat them a little. How much to add has everything to do with the size insert you are installing, the size of your tyre and the type of sealant. A good rule of thumb is to add 50% more than you would normally use. So, if you normally use 100ml of sealant, with the insert you should be adding 150ml. Easy right. And just remember, if you skimp out, you can always add more later on.

### Step 9: Finish Fitting the Tyre

Finish fitting your tyre. This part should be as easy as fitting your tyre without the inserts. If it seems more difficult, don't stress, it just means your insert is a tad shorter than the ideal length but it will function perfectly all the same. Take your time and don't hold your breath, it's a whole lot easier than you think.

### Step 10 (Sealant Option 2)

If you haven't already done so, it's time to add sealant. If you are adding sealant through the valve, make sure you remove the valve core first using the special cap supplied and re-install it when you are done. The valve core needs to be wound in firmly, don't over do it.

### Step 11: Inflate

Inflate your tyre. No tricks of the trade here, just use the method you always do. When your tyre is fully inflated and seated correctly, double check the valve is screwed up nice and firm, you don't want to leak air!

### Step 12: Tire Pressure

Tyre Pressures. To start, we recommend setting the pressure at your normal level, run down a couple of your favorite trails and get used to the feel before tuning the ride. It's a bit like dating right, you need to get to know each other first...

**Woo Hoo... YOU ARE DONE**

Time to hit the trails and get GNARLY!

[www.gnarlyoz.com](http://www.gnarlyoz.com)