

# DM01

750w & 1000w



## PRODUCT

# DM01 Mid Drive Motor Torque Sensor / Cadence Sensor

DM01 is one of the ultimate e-bike mid-drive motor, with up to 1000W power output, > 80% motor efficiency performance, and 160N.m of torque. Cost-effective easy installation competitive price.

Compatible battery range: 48-60 volts



# DESCRIPTION

## DM01 MID DRIVE MOTOR

DM01 is one of the ultimate e-bike mid-drive motor , it is used by #electric bicycle manufacturers to produce a good durable electric #bicycle .

It is made of #Aluminum alloys so it has a high resistance to rust , corrosion , dust , humidity and other environment materials ,also it has a high durability and low maintenance

Integrated high-speed motor core (motor core speed > 6000rpm), achieve good mute effect, with high gear ratio (40.27) , high motor output, make the motor start fast and with strong climbing ability  
Easy to install,

Bilateral pure torque sensor , achieved perfect human – machine coordination.

Fits 95% of standard bike frames.

68mm ~ 73mm & 100mm ~ 110mm two types of bottom bracket width, wide range of applications.

The clutch is integrated on the big gear.

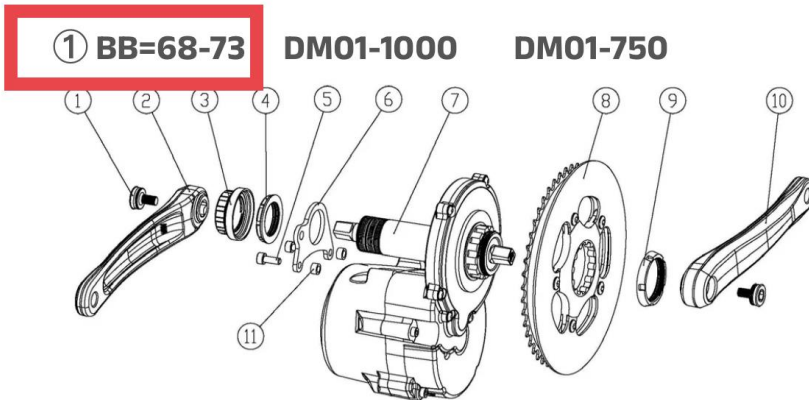
The bottom bracket is completely disengaged from the gear when cycling, even when there is no electric power.

The #motor #gear and the center axle will not cause heavy riding due to the extra gear structure, just as easy as riding a normal bicycle.

FOC vector controller , high efficiency , low noise fast – response.

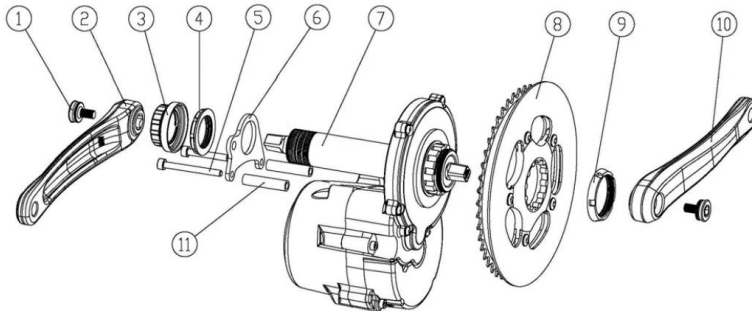
## ADDITIONAL INFORMATIONS

<b>Mounting Position</b>	<i>Central</i>
<b>Shell Color</b>	<i>Black/Silver</i>
<b>Rated Power</b>	<i>750W/1000W</i>
<b>Rated Voltage</b>	<i>48V/52V</i>
<b>Reduction Gear Ratio</b>	<i>40.27:1</i>
<b>Max.Speed</b>	<i>160rpm</i>
<b>Max Torque</b>	<i>160N.m</i>
<b>Sensor Style</b>	<i>Cadence/Torque sensor</i>
<b>Teeth Species</b>	<i>46T(or 38T/54T)</i>
<b>BB Axle</b>	<i>68mm~73mm~100mm~110mm</i>
<b>Noise Level</b>	<i>&lt; 50dB</i>
<b>Work Temperature</b>	<i>-20°C ~ 50°C</i>
<b>Motor Weight</b>	<i>5.8kg/6Kg</i>
<b>Waterproof Level</b>	<i>IP65</i>



Component Part	Specification	Qty	BB =68	BB= 73
Axle Screw	M8X1X15	2	✓	✓
Left Crank	170mm	1	✓	✓
Decoration Cap		1	✓	✓
Non-standard Nut	M33.5X1.5	1	✓	✓
Screw	See Column 4 or 5	2	M6 X14	M6 X20
Reinforced Plates		1	✓	✓
Drive Unit	DM01-1000 or DM01-750	1	✓	✓
Crankset	46T	1	✓	✓
Locknut	M42X1.5	1	✓	✓
Right Crank	170mm	1	✓	✓

**② BB=100-110 DM01L-1000 DM01L-750**

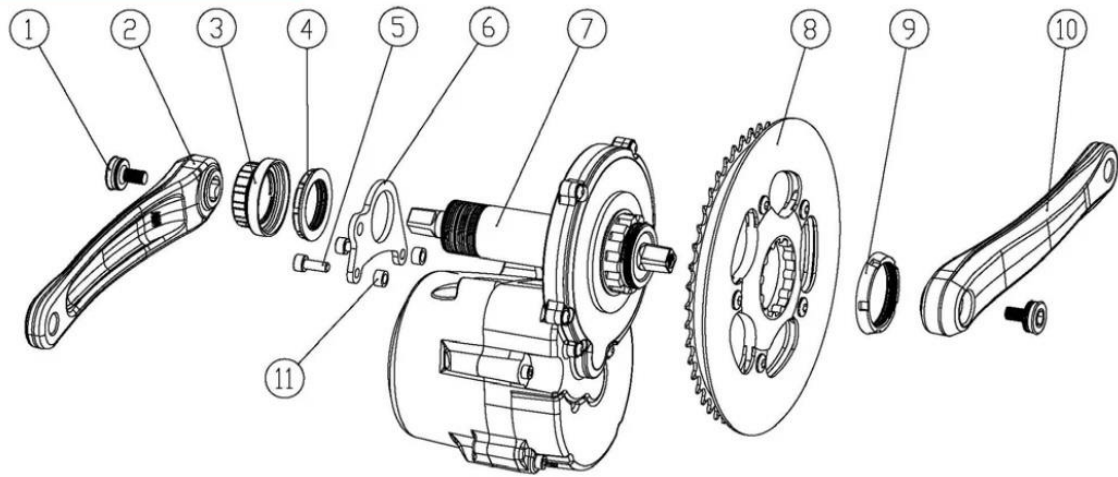


<b>Component Part</b>	<b>Specification</b>	<b>Qty</b>	<b>BB=100</b>	<b>BB=110</b>
<b>Axle Screw</b>	<b>M8X1X15</b>	<b>2</b>	√	√
<b>Left Crank</b>	<b>170mm</b>	<b>1</b>	√	√
<b>Decoration Cap</b>		<b>1</b>	√	×
<b>Non-standard Nut</b>	<b>M33.5X1.5</b>	<b>1</b>	√	√
<b>Screw</b>	<b>See Column 4 or 5</b>	<b>2</b>	<b>M6 X45</b>	<b>M6 X55</b>
<b>Reinforced Plates</b>		<b>1</b>	√	√
<b>Drive Unit</b>	<b>DM01L-1000 or DM01L-750</b>	<b>1</b>	√	√
<b>Crankset</b>	<b>46T</b>	<b>1</b>	√	√
<b>Locknut</b>	<b>M42X1.5</b>	<b>1</b>	√	√

**① BB=68-73**

**DM01-1000**

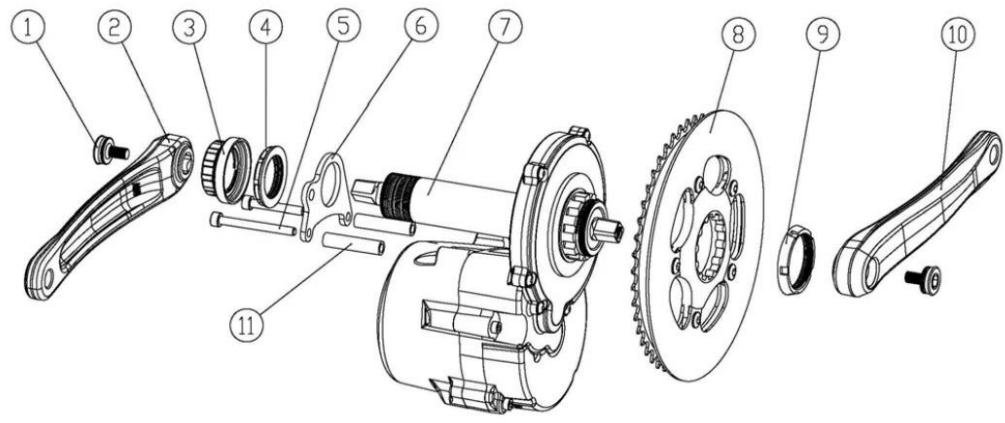
**DM01-750**



**② BB=100-110**

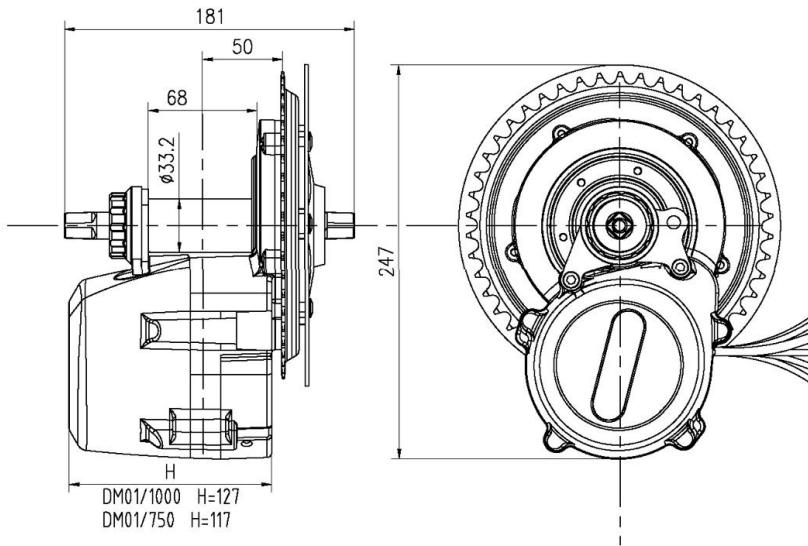
**DM01L-1000**

**DM01L-750**



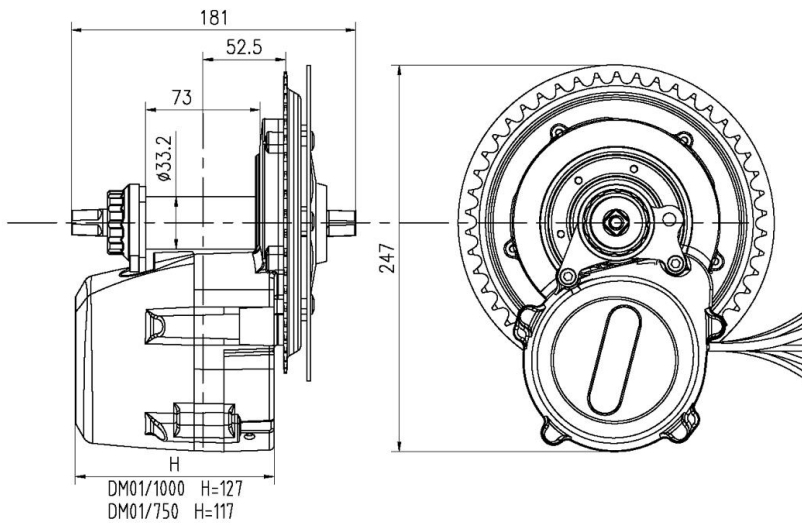
① **BB=68 CL=50 (or 59)**

**Model: DM01-1000 DM01-750**



② **BB=73 CL=52.5 (or 61.5)**

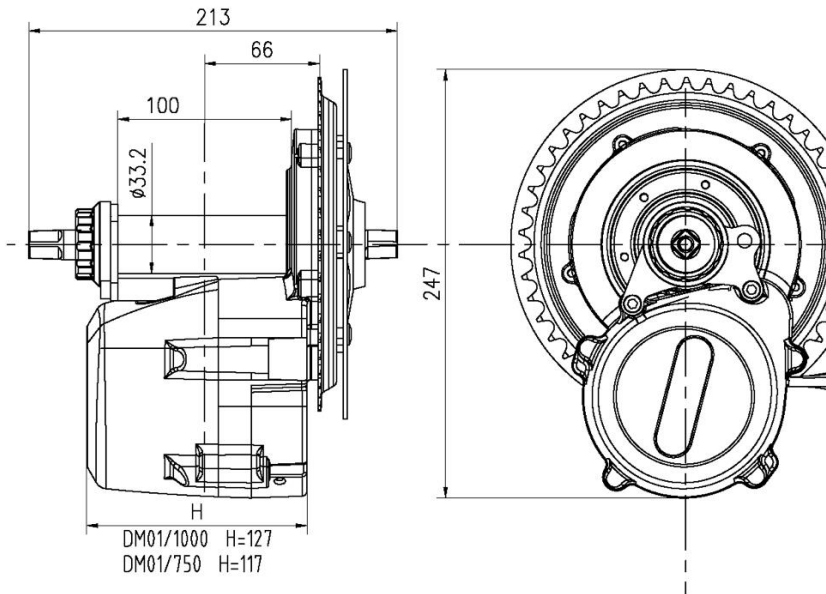
**Model: DM01-1000 DM01-750**





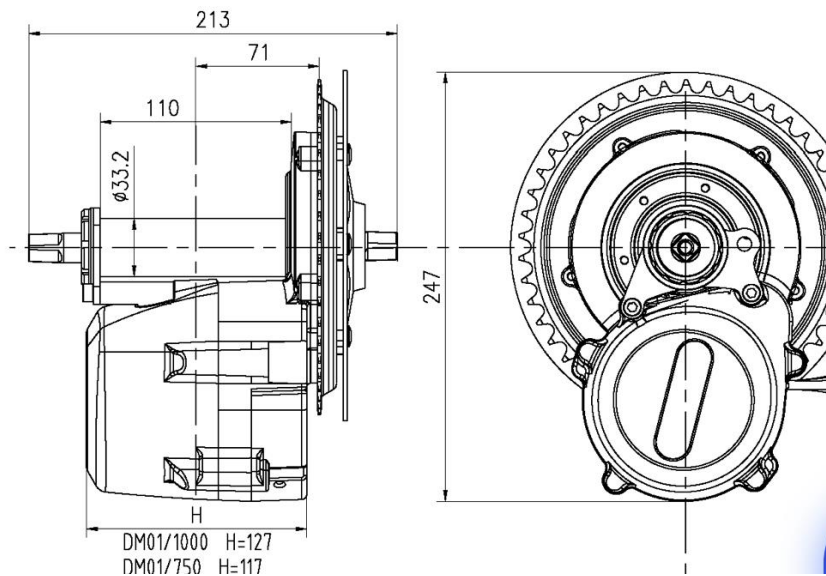
③ **BB=100 CL=66 (or 75)**

**Model: DM01L-1000 DM01L-750**



④ **BB=110 CL=71 (or 80)**

**Model: DM01L-1000 DM01L-750**





DM-01