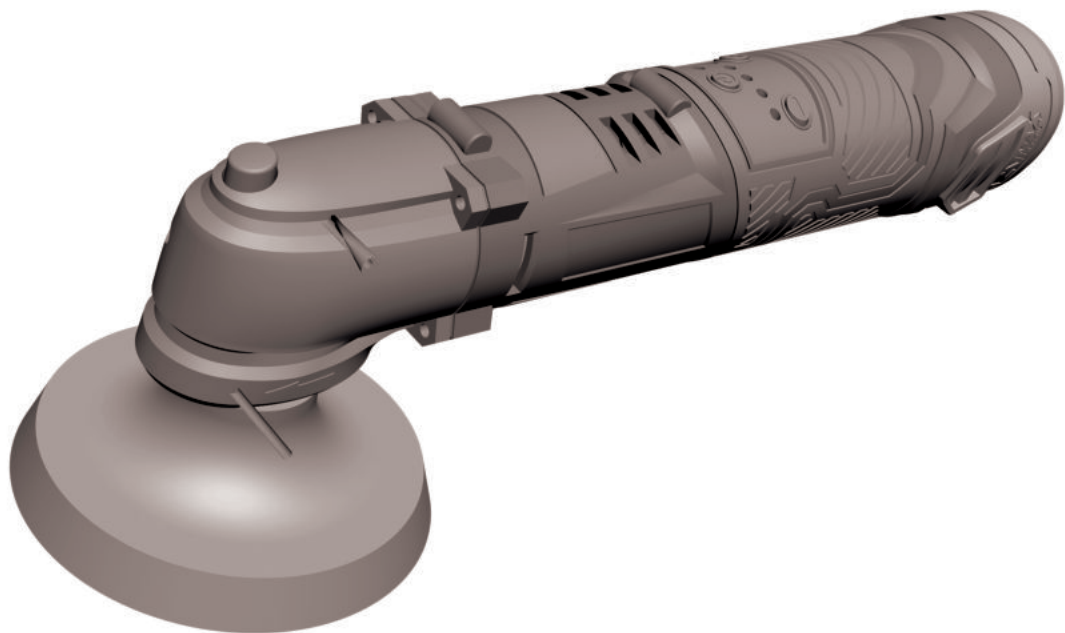


KIMO



MODEL 5001

INSTRUCTION MANUAL

12V Power POLISHER

www.kimotool.com

If you have questions or comments, contact us at

service@kimotools.com

IF YOU HAVE ANY QUESTIONS OR COMMENTS ABOUT THIS OR ANY KIMO TOOL, EMAIL US AT:

SERVICE@KIMOTOOLS.COM

SAVE THESE INSTRUCTIONS!



WARNING! Read and understand all instructions. Failure to follow all instructions listed below may result in electric shock, fire and/or serious personal injury.

GENERAL SAFETY RULES

WORK AREA

- **Keep your work area clean and well lit.** Cluttered benches and dark areas invite accidents.
- **Do not operate power tools in explosive atmospheres, such as in the presence of flammable liquids, gases, or dust.** Power tools create sparks which may ignite the dust or fumes.
- **Keep bystanders, children, and visitors away while operating a power tool.** Distractions can cause you to lose control.

ELECTRICAL SAFETY

- **Don't expose power tools to rain or wet conditions.** Water entering a power tool will increase the risk of electric shock.

PERSONAL SAFETY

- **Stay alert, watch what you are doing and use common sense when operating a power tool.** Do not use tool while tired or under the influence of drugs, alcohol, or medication. A moment of inattention while operating power tools may result in serious personal injury.

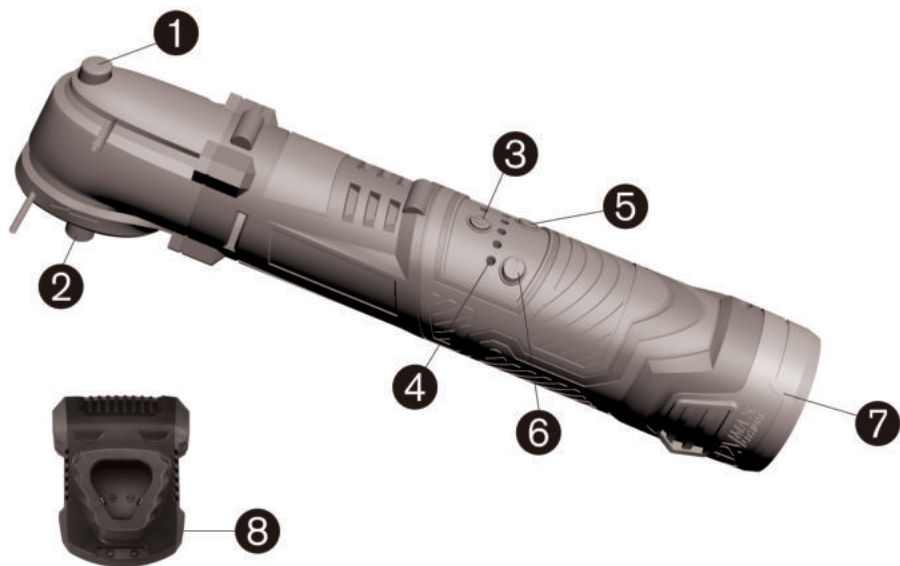
- **Dress properly. Do not wear loose clothing or jewelry. Contain long hair. Keep your hair, clothing, and gloves away from moving parts.** Loose clothing, jewelry, or long hair can be caught in moving parts. Air vents often cover moving parts and should also be avoided.
- **Avoid accidental starting. Be sure switch is off before plugging in.** Carrying tools with your finger on the switch or plugging in tools that have the switch on invites accidents.
- **Remove adjusting keys or wrenches before turning the tool on.** A wrench or a key that is left attached to a rotating part of the tool may result in personal injury.
- **Do not overreach. Keep proper footing and balance at all times.** Proper footing and balance enables better control of the tool in unexpected situations.
- **Use safety equipment . Always wear eye protection.** Dust mask, non-skid safety shoes, hard hat, or hearing protection must be used for appropriate conditions.

TOOL USE AND CARE

- **Use clamps or other practical way to secure and support the work piece to a stable platform.** Holding the work by hand or against your body is unstable and may lead to loss of control.
- **Do not force tool. Use the correct tool for your application.** The correct tool will do the job better at the rate for which it is designed.
- **Do not use tool if switch does not turn it on or off.** Any tool that cannot be controlled with the switch is dangerous and must be repaired.
- **Store idle tools out of reach of children and other untrained persons.** Tools are dangerous in the hands of untrained users.

- **Maintain tools with care.** Keep cutting tools sharp and clean. Properly maintained tools, with sharp cutting edges are less likely to bind and are easier to control.
- **Check for misalignment or binding of moving parts, break- age of parts, and any other condition that may affect the tool's operation.** If damaged, have the tool serviced before using. Many accidents are caused by poorly maintained tools.
- **Use only accessories that are recommended by the manufacturer for your model.** Accessories that may be suitable for one tool, may become hazardous when used on another tool.

COMPONENTS AND SPECIFICATIONS



1. Spindle Lock Button
2. Spindle
3. Power Button
4. Speed Level Indicator

5. Speed Up Control
6. Slow Down Control
7. Battery
8. Charger

Model	5001
Voltage	12V
Battery Specification	2.0 Ah
Charging Time	1 Hour
Polishing Pad Size	4-1/2 Inch
Speed Level 1	600 Revolution/Minute (RPM)
Speed Level 2	1200 Revolution/Minute (RPM)
Speed Level 3	1800 Revolution/Minute (RPM)
Speed Level 4	2400 Revolution/Minute (RPM)
Speed Level 5	3000 Revolution/Minute (RPM)
Weight (Bare Tool)	1.32 lbs.
Weight (Tool + Battery)	1.73 lbs.

SPECIFIC INSTRUCTIONS

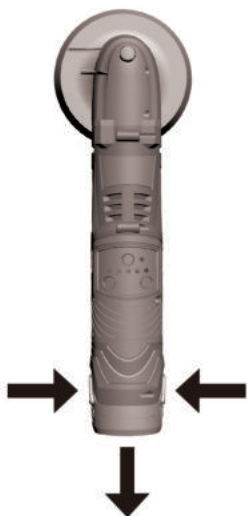


WARNING! Hold power tool by insulated gripping surfaces, when performing an operation where the fastener may contact hidden wiring. Fasteners contacting a “live” wire may make exposed metal parts of the power tool “live” and could give the operator an electric shock.

Inserting/Removing the Battery



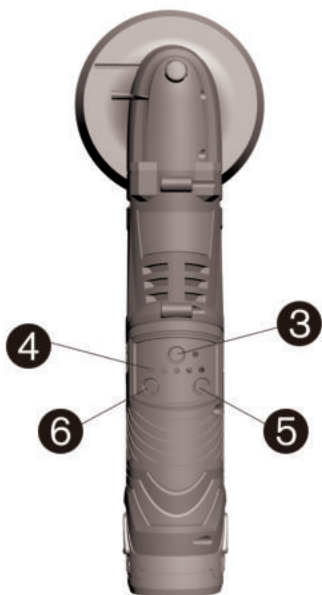
To insert the battery, slide the pack into the body of the tool. Make sure it latches securely into place.



To remove the battery, depress the release buttons and pull the battery pack out of the tool.

STARTING, STOPPING AND CONTROLLING SPEED

To turn ON the tool, Long Press the Power Button(3) until the first Speed Level Indicator(4) turns red.



To turn OFF the tool, Long Press the Power Button(3) until all the Speed Level Indicators(4) and the power indicator are turned off.

To INCREASE the polishing speed, press the Speed Up Control(5) to your desired speed level.

To DECREASE the polishing speed, press the Slow Down Control(6) to your desired speed level.

ATTACHING AND REMOVING ACCESSORIES

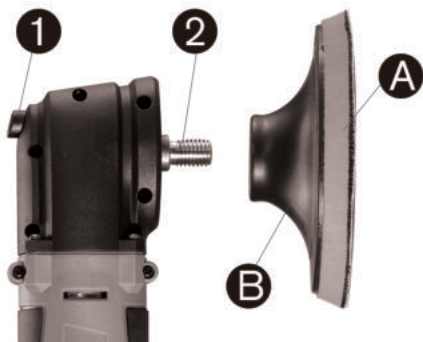


WARNING! Always remove the battery pack before performing maintenance, changing accessories, storing the tool and any time the tool is not in use.

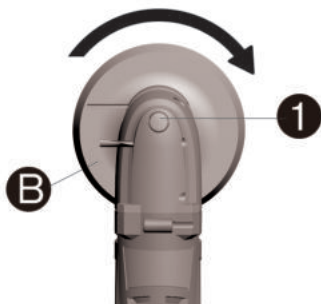
Polishing pads with a diameter of 4-1/2" (11.4 cm) may be used with the KIMO Power Polisher, all other polishing pads of other sizes are strictly forbidden.

TO ATTACH POLISHING PAD

1. Attach foam or wool pad (A) to backing pad (B), being careful to center the backing pad with the foam or wool pad.



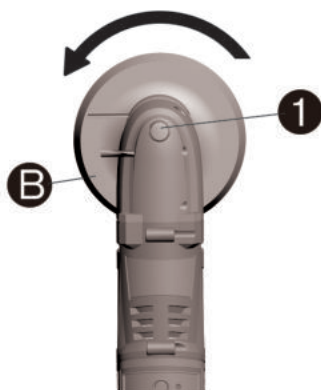
2. Screw backing pad (B) onto spindle (2) clockwise, while depressing spindle lock button (1).



WARNING! To reduce the risk of serious personal injury, do not allow any loose portion of the polishing bonnet or its attachment strings to spin freely. Tuck away or trim any loose attachment strings. Loose and spinning attachment strings can entangle your fingers or snag on the workpiece.

TO REMOVE PADS

1. Depress spindle lock button(1) and screw backing pad(B) clockwise to allow lock button to engage spindle(2).
2. Hold down the spindle lock button(1) and screw the backing pad(B) out of the spindle(2) counter-clockwise.



POLISHING

- These instructions and suggestions are intended to familiarize new operators in overall general operation of power polishing. You will develop your own techniques which will make the job easier and faster as you learn power polishing.
- Use lower speeds for applying liquid waxes and polishes and higher speeds for removing dried liquid. Use the highest speed (repeatedly press speed up control until it reaches the highest speed level) for buffing the car to a final lustre.
- You should use utmost care when power polishing around or over sharp objects and contours of the car body. It is very important to use the correct pressure while polishing various sections of an automobile body. For example, light pressure should be applied when polishing over sharp edges of body panels, or over edges of the rain gutter along the top.
- Since everyone does not use the same type of power polish, we recommend you clean and polish a test section on a flat area of the car first. From this test section, you can judge the strength or cleaning action of your power polish.

- Remember, all power polish is not the same. Different brands will react differently on various painted surfaces. Also, you are now using a power polisher with power polish. This is entirely different from any hand application which you may have done before. Wash the car before power polishing it. Washing will remove loose dirt, scum, road salt, etc. which could act as an abrasive and damage paint. Loose dirt, etc. will also clog the polishing pad and you will have to clean it more often.

CLEANING

Blow dirt and dust out of all air vents with dry air at least once a week. Wear proper ANSI Z87.1 (CAN/CSA Z94.3) eye protection and proper NIOSH/OSHA/MSHA respiratory protection when performing this.

Never use solvents or other harsh chemicals for cleaning the non-metallic parts of the tool. These chemicals may weaken the plastic materials used in these parts. Use a cloth dampened only with water and mild soap. Never let any liquid get inside the tool; never immerse any part of the tool into a liquid.

Charging Procedure

KIMO chargers are designed to charge **KIMO** battery packs in 30 to 60 minutes depending on the pack being charged.

C



To charge the battery:

1. Insert the battery pack into the charger as shown in figure C.
2. Plug the charger into an appropriate outlet after inserting the battery pack. **Recharge discharged batteries as soon as possible after use or battery life may be greatly diminished. for longest battery life, do not discharge batteries fully.** It is recommended that the batteries be recharged after each use.

Charger Indicator

Red Indicator	Green Indicator	Battery Pack	Status
ON	OFF	Charging	Charging
OFF	ON	Charged	Charged
OFF	OFF	Short Circuited	Short Circuited



IMPORTANT SAFETY INSTRUCTIONS FOR BATTERY CARTRIDGE

1. Before using battery cartridge, read all instructions and cautionary markings on (1) battery charger, (2) battery, and (3) product using battery.
2. Do not disassemble battery cartridge.
3. If operating time has become excessively shorter, stop operating immediately. It may result in a risk of overheating, possible burns and even an explosion.
4. If electrolyte gets into your eyes, rinse them out with clear water and seek medical attention right away. It may result in loss of your eyesight.
5. Do not short the battery cartridge:
 - (1) Do not touch the terminals with any conductive material.
 - (2) Avoid storing battery cartridge in a container with other metal objects such as nails, coins, etc.
 - (3) Do not expose battery cartridge to water or rain.A battery short can cause a large current flow, overheating, possible burns and even a breakdown.
6. Do not store the tool and battery cartridge in locations where the temperature may reach or exceed 122°F.
7. Do not incinerate the battery cartridge even if it is severely damaged or is completely worn out. The battery cartridge can explode in a fire.
8. Be careful not to drop or strike battery.
9. Do not use a damaged battery.
10. Follow your local regulations relating to disposal of battery.

WARRANTY

Every KIMO power tool is warranted to the original purchaser only to be free from defects in material and workmanship. Subject to certain exceptions, KIMO will replace any part on an electric power tool that is defective in material or workmanship for a period of 2 years after the date of purchase unless otherwise noted. This warranty does not apply to damage from repairs made or attempted by anyone other than KIMO, misuse, alterations, abuse, normal wear and tear, lack of maintenance, or accidents.

Normal Wear: Many power tools need periodic parts replacement and service to achieve best performance. This warranty does not cover repair when normal use has exhausted the life of a part including, but not limited to, chucks, brushes, cords, saw shoes, blade clamps, o-rings, seals and driver blades.

Warranty Registration is not necessary to obtain the applicable warranty on a KIMO power tool product.

This warranty applies to product sold in the U.S.A. only.

EXTENDED WARRANTY REGISTRATION

Dear Customer,

Thank you very much for choosing **KIMO**. At **KIMO**, customer satisfaction is our highest priority. In order to provide the best services, we would like to offer you an extra 12-month limited warranty. Below is the free registration process.

To register our extended warranty for your KIMO product, please send your name, your email AND your Amazon order number to **Service@kimotools.com** Our customer services representative will help you register within 24 hours.

Disclaimer: This policy is at the manufacturer's discretion.

Best Regards,
KIMO Customer Support