

## 7 OUTLET ADVANCED POWERSTRIP + LIGHT LEVEL SENSOR

Premium quality, fireproof surge protection and reduces vampire / standby power consumption of PC and TV peripherals

### OVERVIEW

Advanced PowerStrip (APS) provides premium quality surge protection and reduces the amount of standby + active power wasted by electronics.

The Advanced PowerStrip includes a low voltage RJ11 connector that allows a Light Level Sensor to be connected.

The Advanced PowerStrip includes current sensing on the 1st switched outlet. This allows the APS to support standard master/switched functionality when used with the Light Level Sensor. Simple, easy to install and provides automation to reduce wasteful standby and active power. Suitable for TV/home theatre applications.

### KEY FEATURES

- 7 Outlets
  - 2 Always On Outlets (1 outlet transformer spaced)
  - 5 Switched Outlets (1 outlet transformer spaced, 1 outlet with current sensing)
- 15A resettable circuit breaker
- 72,000 Amps / 1080 Joules
- Ceramic Surge Protection
- 1 Low voltage optically isolated RJ11 input
- LED Status Indication (Ground, Surge Status, Switched)
- <40dB noise filtering
- Angled space saver plug

### FIREPROOF SURGE PROTECTION

Traditional surge suppression products use standard MOV (Metal Oxide Varistor) components. TrickleStar APS incorporates advanced surge protection technology. The MOVs are encased in a ceramic casing and are capable of suppressing more energy and dissipating heat faster than traditional MOVs. More importantly the ceramic casing is fireproof and is capable of preventing fire during abnormal surge conditions.

### LIGHT LEVEL SENSOR

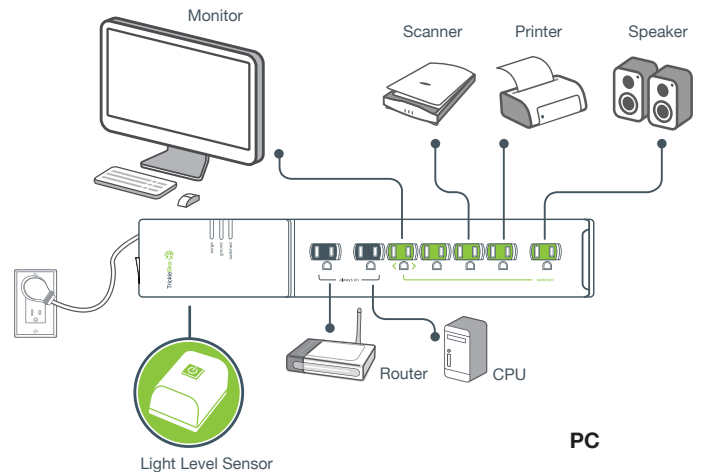
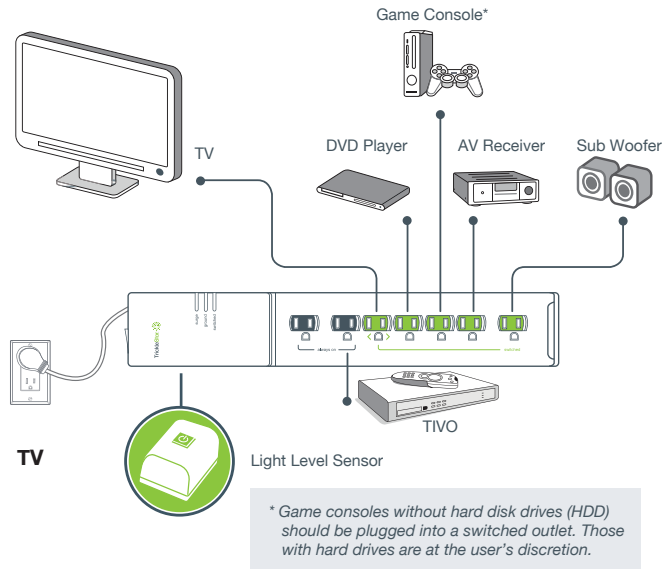
- Works with Advanced PowerStrips
- Detects if lights are on/off and switches switched outlets on/off with lighting
- Sensing delay period of 3 minutes
- Ideal for offices where there are existing ceiling mounted occupancy sensors. A simple way to add plug-load control to a lighting management or building management system

### PRODUCT WARRANTY

Lifetime product warranty

\$20,000 connected equipment warranty

## APPLICATION DIAGRAMS



## ELECTRICAL SPECIFICATIONS

### APS

#### FOR INDOOR USE

<b>Voltage</b>	120 VAC +/- 10% 60Hz
<b>Power Rating</b>	15A
<b>Surge protection</b>	72,000 Amps / 1080 Joules
<b>Noise Filtering</b>	<40dB
<b>Power Consumption</b>	<1 Watt
<b>RJ11</b>	3.3V + Optically isolated

### LIGHT LEVEL SENSOR

#### FOR INDOOR USE

<b>Voltage</b>	3.3V
<b>Cord Length</b>	8 ft.
<b>Connector</b>	RJ11
<b>Switch Type</b>	Momentary
<b>Debounce / hysteresis</b>	3 Minutes

## PHYSICAL SPECIFICATIONS

<b>Operating Temperature</b>	32° to 113° F
<b>Storage Temperature</b>	14° to 140° F
<b>Humidity</b>	5 to 90% N/C
<b>IP Rating</b>	IP20

## APPROVALS

Conformity to product standards for safety and EMC.

- UL (US & Canada)
- 2002/95/EG (RoHs)
- 2002/96/EC (WEEE)
- 1999/5/EC (RTTE)

## ORDERING INFORMATION

TAA3901	7 Outlet APS, 1080 Joules, 4 ft. cord, White, Current Sensing, Light Level Sensor, Polybag
TAA3902	7 Outlet APS, 1080 Joules, 8 ft. cord, White, Current Sensing, Light Level Sensor, Polybag
TAA3903	7 Outlet APS, 1080 Joules, 12 ft. cord, White, Current Sensing, Light Level Sensor, Polybag

For more information, please contact :  
customer.service@tricklestar.com  
Toll Free : 1-888-700-1098

Made in Taiwan



Copyright © TrickleStar. All rights reserved.

TrickleStar® is a registered trademarks of TrickleStar Ltd. All other trademarks are the property of their respective owners. The information in this document is subject to change without notice. TrickleStar assumes no responsibility for any errors that may appear in this document.

Rev 6 / 21 Jul 2016