

7 OUTLET ADVANCED POWERSTRIP + MOTION-SENSOR

Premium quality, fireproof surge protection and reduces vampire / standby power consumption of PC and TV peripherals

OVERVIEW

Advanced PowerStrip (APS) provides premium quality surge protection and reduces the amount of standby + active power wasted by electronics.

The Advanced PowerStrip includes a low voltage RJ11 connector that allows a Motion-Sensor to be connected.

The Advanced PowerStrip includes current sensing on the 1st switched outlet. This allows the APS to support standard master/switched functionality when used with the Motion-Sensor. Simple, easy to install and provides automation to reduce wasteful standby and active power. Suitable for TV/home theatre applications.

KEY FEATURES

- 7 Outlets
 - 2 Always On Outlets (1 outlet transformer spaced)
 - 5 Switched Outlets (1 outlet transformer spaced, 1 outlet with current sensing)
- 15A resettable circuit breaker
- 72,000 Amps / 1080 Joules
- Ceramic Surge Protection
- 1 Low voltage optically isolated RJ11 input
- LED Status Indication (Ground, Surge Status, Switched)
- <40dB noise filtering
- Angled space saver plug

FIREPROOF SURGE PROTECTION

Traditional surge suppression products use standard MOV (Metal Oxide Varistor) components. TrickleStar APS incorporates advanced surge protection technology. The MOVs are encased in a ceramic casing and are capable of suppressing more energy and dissipating heat faster than traditional MOVs. More importantly the ceramic casing is fireproof and is capable of preventing fire during abnormal surge conditions.

MOTION-SENSOR

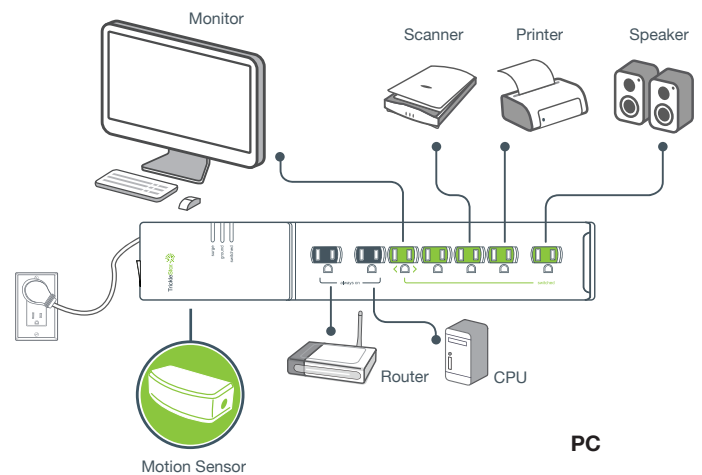
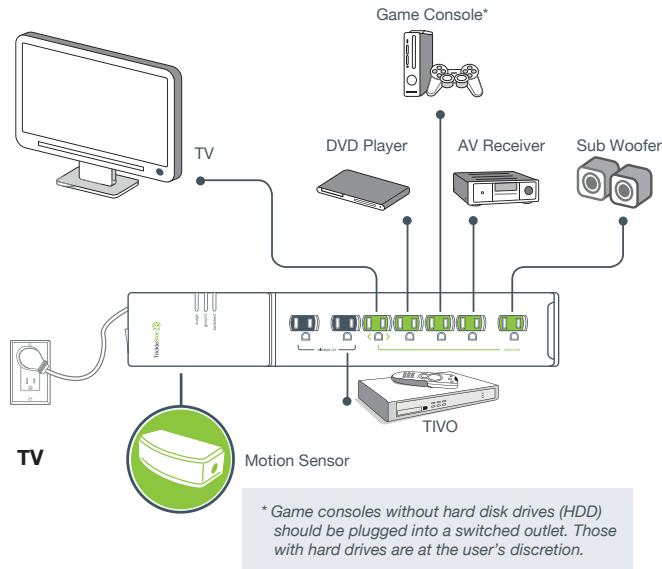
- Highly sensitive PIR motion sensor
- Detects activity and controls switched outlets
- Countdown timer will switch off 'switched outlets' if no movement is detected for 30 minutes.
- Suitable for PC, Office cubicle application

PRODUCT WARRANTY

Lifetime product warranty

\$20,000 connected equipment warranty

APPLICATION DIAGRAMS



ELECTRICAL SPECIFICATIONS

APS

FOR INDOOR USE

Voltage	120 VAC +/- 10% 60Hz
Power Rating	15A
Surge protection	72,000 Amps / 1080 Joules
Noise Filtering	<40dB
Power Consumption	<1 Watt
RJ11	3.3V + Optically isolated

MOTION-SENSOR

FOR INDOOR USE

Voltage	3.3V
Cord Length	8 ft.
Connector	RJ11
Switch Type	Momentary
Movement Detection Range	Up to 16.4 ft.
Movement Detection Angle	90°
Countdown Timer	10/30/60 Minutes

PHYSICAL SPECIFICATIONS

Operating Temperature	32° to 113° F
Storage Temperature	14° to 140° F
Humidity	5 to 90% N/C
IP Rating	IP20

APPROVALS

Conformity to product standards for safety and EMC.

UL (US & Canada)
2002/95/EG (RoHs)
2002/96/EC (WEEE)
1999/5/EC (RTTE)

ORDERING INFORMATION

TAA3701	7 Outlet APS, 1080 Joules, 4 ft. cord, White, Current Sensing, Motion Sensor + Bracket, Polybag
TAA3702	7 Outlet APS, 1080 Joules, 8 ft. cord, White, Current Sensing, Motion Sensor + Bracket, Polybag
TAA3703	7 Outlet APS, 1080 Joules, 12 ft. cord, White, Current Sensing, Motion Sensor + Bracket, Polybag

For more information, please contact :
customer.service@tricklestar.com
Toll Free : 1-888-700-1098



Made in Taiwan

Copyright © TrickleStar. All rights reserved.

TrickleStar® is a registered trademarks of TrickleStar Ltd. All other trademarks are the property of their respective owners. The information in this document is subject to change without notice. TrickleStar assumes no responsibility for any errors that may appear in this document.

Rev 6 / 21 Jul 2016