



Quick Start Guide &  
Instruction Manual



**Copyright** © TrickleStar, Inc. 2018. All rights reserved.

TrickleStar® is a registered trademark of TrickleStar Ltd. All other trademarks are the property of their respective owners. The information in this document is subject to change without notice. TrickleStar assumes no responsibility for any errors that may appear in this document.

**Patents Pending & Patents**  
9,665,073 B2

188LV-XX-IMIT-XC8BA

REV 1– 28Nov2018

## PRODUCT INFORMATION

**TS1914**

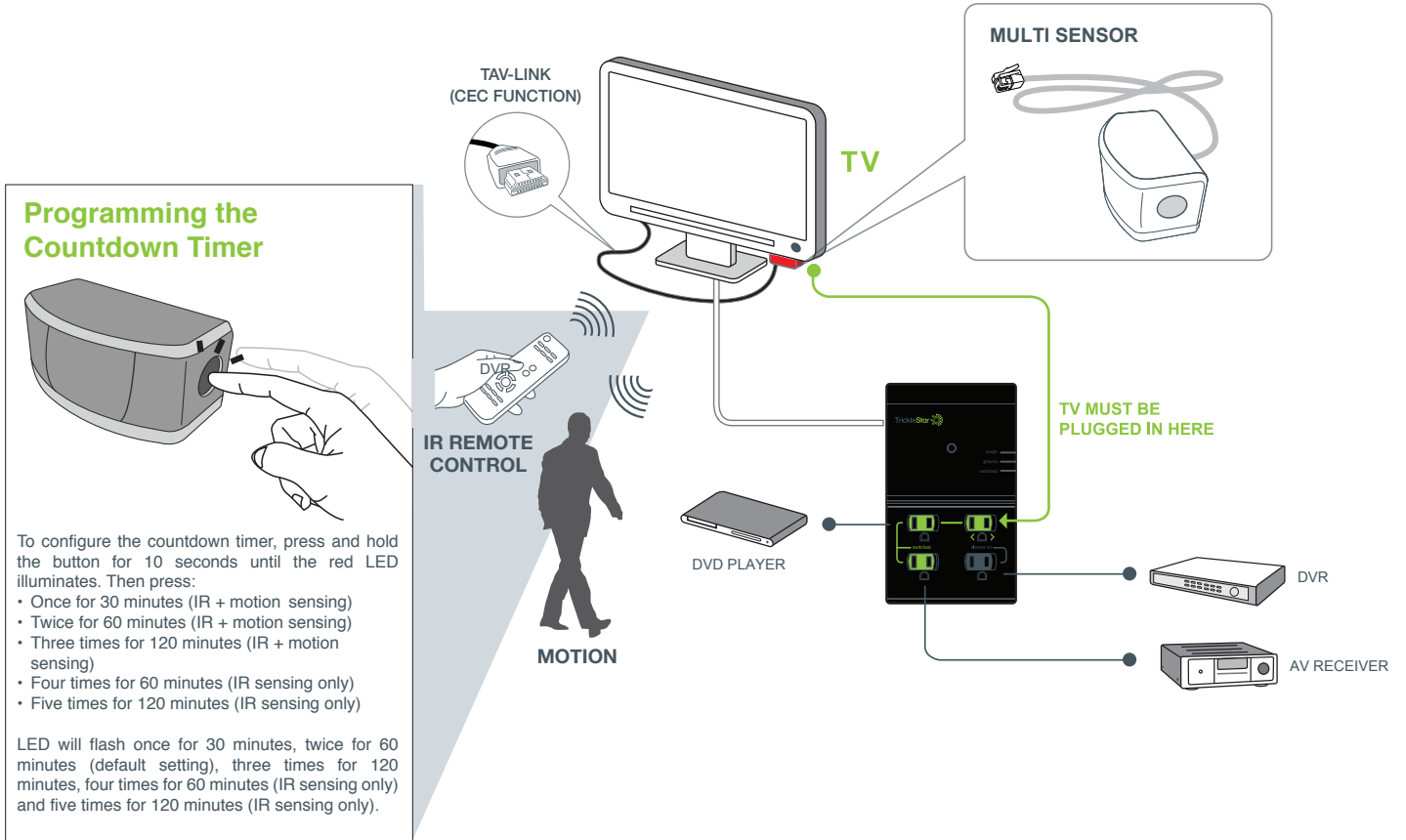
TAV Link™ Multi-Sensor



For technical support  
go to [www.tricklestar.com](http://www.tricklestar.com)  
or call 1-888-700-1098

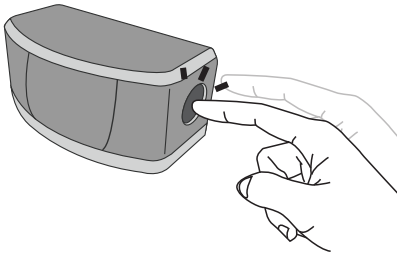
[www.tricklestar.com](http://www.tricklestar.com)

# Installation Diagram (4 Outlet Advanced PowerTap)



# Installation Diagram (7 Outlet Advanced PowerStrip)

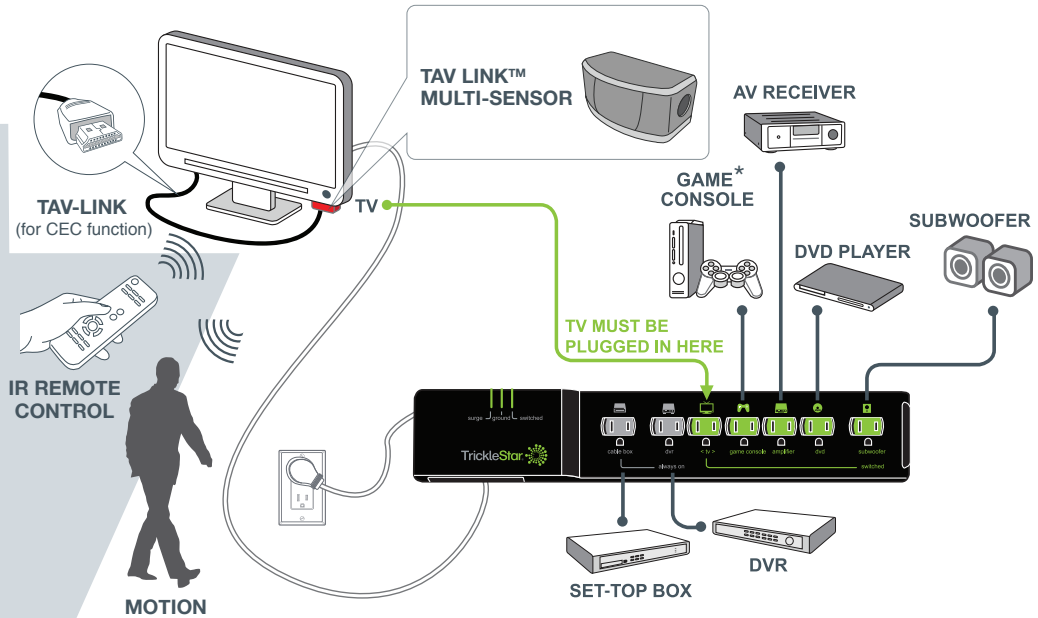
## Programming the Countdown Timer



To configure the countdown timer, press and hold the button for 10 seconds until the red LED illuminates. Then press:

- Once for 30 minutes (IR + motion sensing)
- Twice for 60 minutes (IR + motion sensing)
- Three times for 120 minutes (IR + motion sensing)
- Four times for 60 minutes (IR sensing only)
- Five times for 120 minutes (IR sensing only)

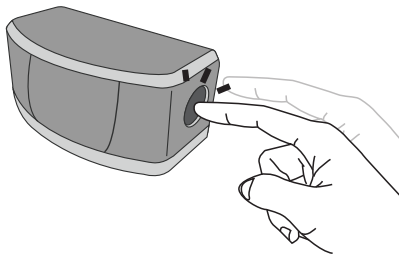
LED will flash once for 30 minutes, twice for 60 minutes (default setting), three times for 120 minutes, four times for 60 minutes (IR sensing only) and five times for 120 minutes (IR sensing only).



\* Game consoles without hard disk drives (HDD) should be plugged into a switched outlet. CEC compatible game consoles with hard disk drives can be plugged into an always-on outlet and controlled via TAV-Link.

# Installation Diagram (12 Outlet Advanced PowerStrip)

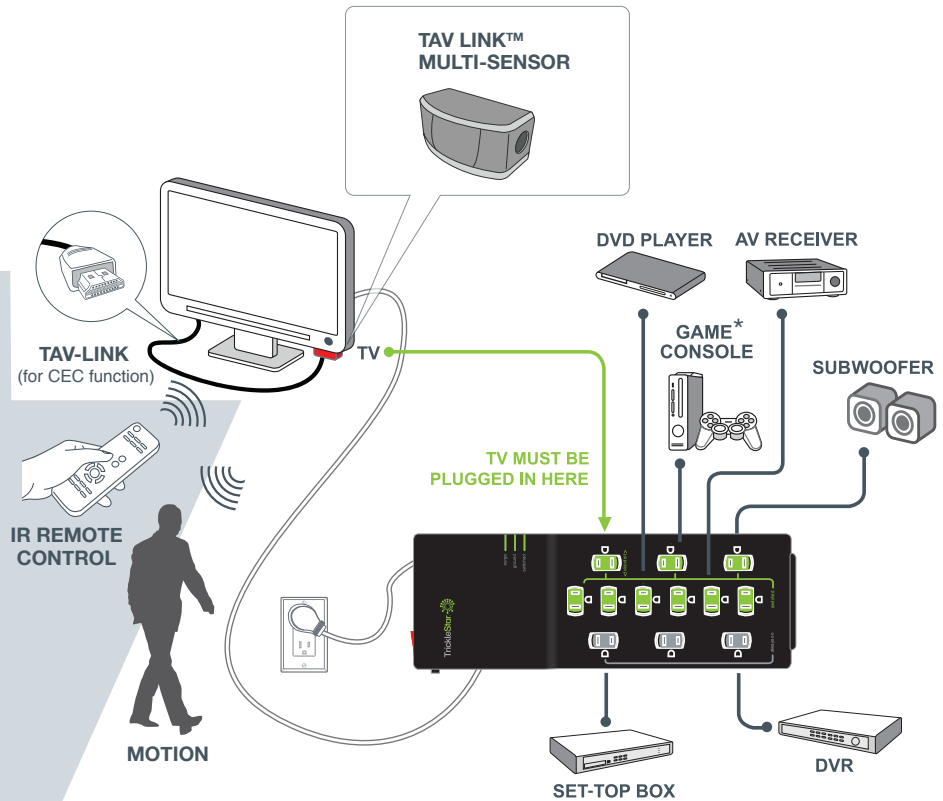
## Programming the Countdown Timer



To configure the countdown timer, press and hold the button for 10 seconds until the red LED illuminates. Then press:

- Once for 30 minutes (IR + motion sensing)
- Twice for 60 minutes (IR + motion sensing)
- Three times for 120 minutes (IR + motion sensing)
- Four times for 60 minutes (IR sensing only)
- Five times for 120 minutes (IR sensing only)

LED will flash once for 30 minutes, twice for 60 minutes (default setting), three times for 120 minutes, four times for 60 minutes (IR sensing only) and five times for 120 minutes (IR sensing only).



\* Game consoles without hard disk drives (HDD) should be plugged into a switched outlet. CEC compatible game consoles with hard disk drives can be plugged into an always-on outlet and controlled via TAV-Link.

# Product Overview

**TAV Link™**  
**Multi-Sensor**



**1 TAV Link™ Multi-Sensor**

The multi-sensor is connected to the powerstrip via the RJ11 port marked "sensor." Mount the multi-sensor on the underside of the TV near the IR receiver on the TV (typically located next to the TV's power on/off button). The multi-sensor must be located within line of sight of where you normally use your remote controls.

**2 Sensor/RJ11 Port**

Plug the TAV Link™ multi-sensor into this port. There will be a soft audible 'click' when the connector is inserted correctly.

**3 Switched Outlets**

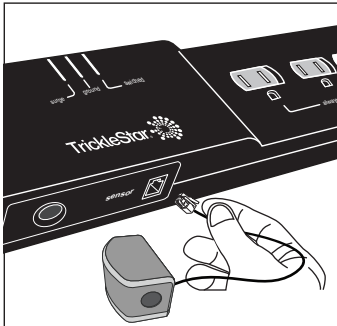
If there is no IR or motion detected, these outlets will switch off.

**4 TAV-Link Cable (optional, not supplied)**

If there is no IR or motion detected, TAV-Link will send high-level CEC commands to certain HDMI connected devices, allowing them to safely store their data and settings prior to powering down

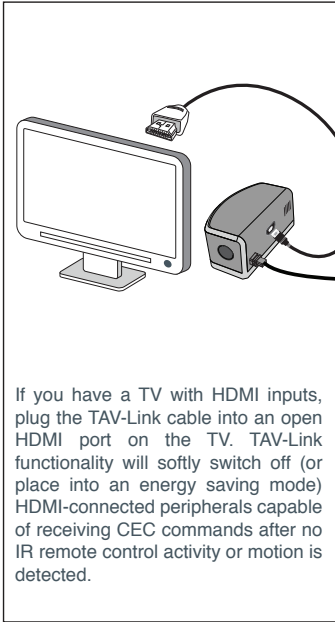
## Installation Instructions

### Step 1



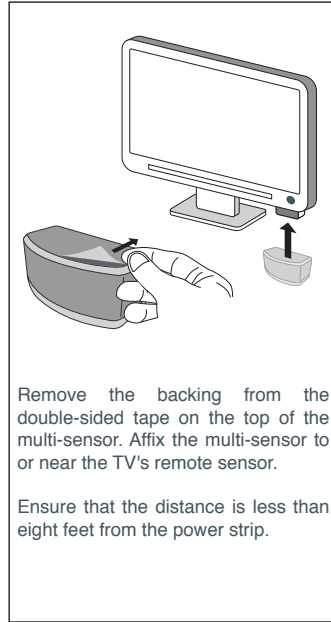
Plug the multi-sensor into the port on the side of the power strip that looks like a phone jack and marked "sensor".

### Step 2



If you have a TV with HDMI inputs, plug the TAV-Link cable into an open HDMI port on the TV. TAV-Link functionality will softly switch off (or place into an energy saving mode) HDMI-connected peripherals capable of receiving CEC commands after no IR remote control activity or motion is detected.

### Step 3

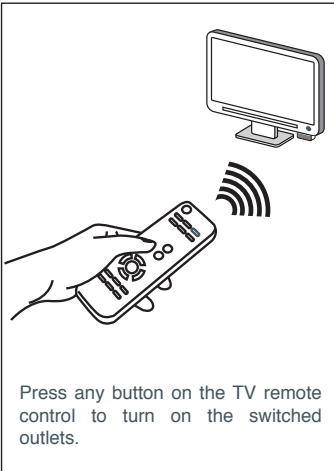


Remove the backing from the double-sided tape on the top of the multi-sensor. Affix the multi-sensor to or near the TV's remote sensor.

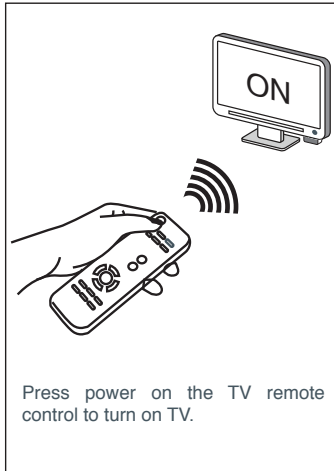
Ensure that the distance is less than eight feet from the power strip.

## Operation - TV Mode

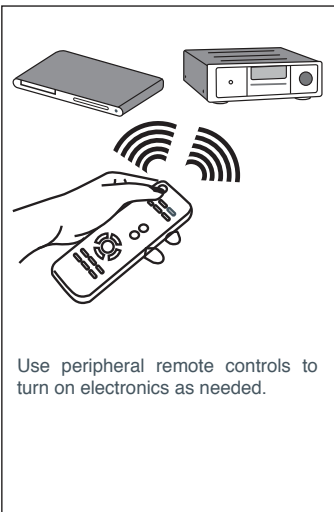
### Step 1



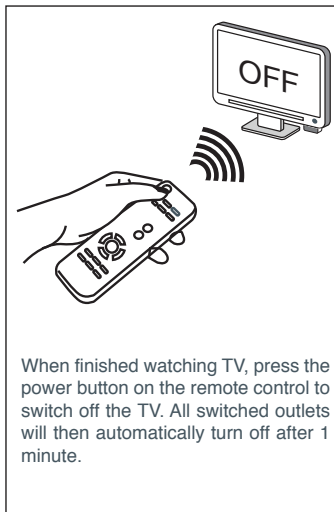
### Step 2



### Step 3

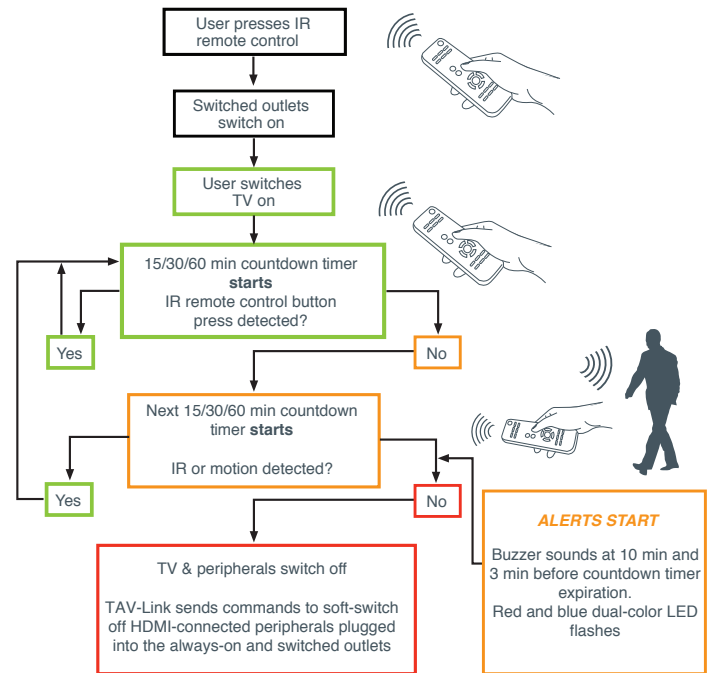


### Step 4



## Energy Saving

### IR + Motion Sensing



### Terms

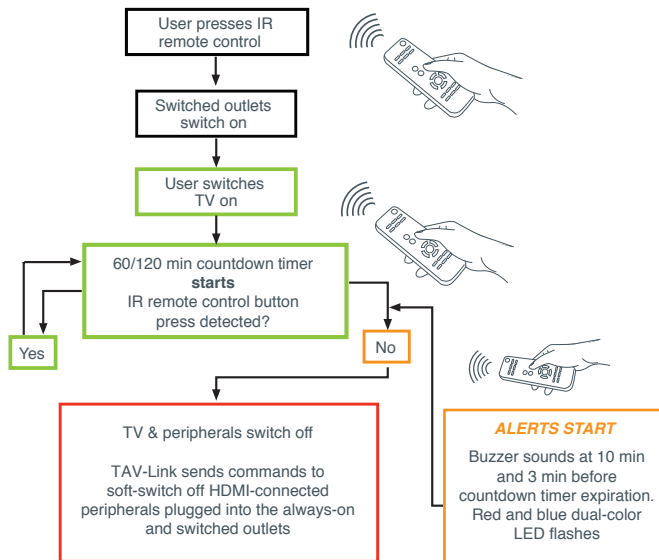
- IR** - Infrared remote control signal
- PIR Sensor** - Multi-sensor uses passive infrared sensing to detect motion
- Motion** - Motion detected by PIR
- Countdown Timer** - Time before the switched outlets are automatically switched off
- Countdown Period** - 30/60/120 minutes (default - 60 min.)
- LED** - Red and blue dual-color LED located in multi-sensor
- When IR or motion is sensed, the red LED will flash
- Buzzer** - Buzzer located in the multi-sensor

### Countdown Timer Operation

- For the first 15/30/60 minutes - the multi-sensor senses for IR only.
- For the next 15/30/60 minutes - the multi-sensor senses for IR signal and motion.
- If no IR or motion has been sensed during the 30/60/120 minute countdown period, the switched outlets will switch off automatically.

## Energy Saving

### IR-only Sensing



### Terms

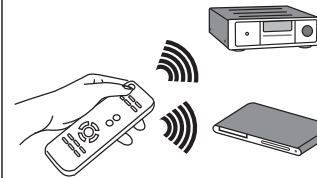
- IR** - Infrared signal, transmitted by a remote control
- IR Signal Sensor** - Multi-sensor senses for an IR command
- Countdown Timer** - Time before the switched outlets are automatically switched off
- Countdown Period** - 60/120 minutes
- LED** - Red and Blue dual colour LED located in multi-sensor
- When IR is sensed, the Red LED will flash
- Buzzer** - Buzzer located in the multi-sensor

### Countdown Timer Operation

- For the 60/120 minutes - the multi-sensor senses for IR signal.
- If no IR has been sensed during the 60/120 minute countdown period, the switched outlets will switch off automatically.

## Operation

### Music Mode



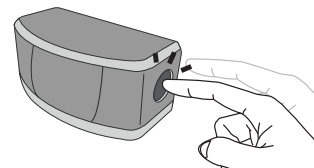
Press any button on AV receiver or set-up box/DVD/CD player remote control to turn on the switched outlets.

Press power on all music related devices to switch them on.

#### Note:

- If the TV is not switched on at any time in between, all switched outlets will turn off after eight hours.
- If the TV is switched on during music mode, the Advanced PowerStrip+ will switch to TV mode.

### Countdown Timer Setting



To configure the countdown timer, press and hold the button for 10 seconds until the red LED illuminates. Then press:

- Once for 30 minutes (IR + motion sensing)
- Twice for 60 minutes (IR + motion sensing)
- Three times for 120 minutes (IR + motion sensing)
- Four times for 60 minutes (IR sensing only)
- Five times for 120 minutes (IR sensing only)

After countdown timer is set, the LED will flash the number of times that timer has been set to.

#### Note:

The sensor has a default buzzer notification that will sound at both 10 minutes and 3 minutes prior to countdown timer expiration. To disable the audible notification, press and hold the button for 10 seconds until the red LED illuminates, then press the button six times. The red LED will flash six times to confirm that the countdown timer buzzer has been disabled.